



Board of Directors Meeting

May 19, 2025





Pledge of Allegiance

I pledge allegiance to the flag of the United States of America, and to the republic for which it stands, one nation under God, indivisible, with liberty and justice for all.

Pledge of Allegiance to the Texas Flag

Honor the Texas flag; I pledge allegiance to thee, Texas, one state under God, one and indivisible.

An underwater photograph showing the surface of the water at the top, with light rays and bubbles filtering down into the deep blue water. The scene is serene and captures the play of light and movement in an aquatic environment.

Agenda Item 2:
Public Comment

An underwater photograph showing the surface of the water at the top, with light rays and bubbles filtering through the clear blue water. The scene is serene and captures the play of light and movement beneath the surface.

Agenda Item 3:

**Consider Approval of the Minutes from the Meeting Held
on April 21, 2026**

An underwater photograph showing the surface of the water at the top, with light rays and bubbles filtering through the clear blue water. The scene is serene and captures the play of light and movement in an aquatic environment.

Agenda Item 4:

Consider Approval of Consent Agenda

- Consider Approval of Change in Calculation of Retainage to BAR Constructors, Inc for Lake Palestine Pump Station Intake and Wetwell Construction Package 1

Agenda Item :

Consider Approval of Contract with Deloitte for Audit Services

Sandy Newby, Chief Financial Officer

Agenda Item 5:

**Consider Approval of Contract Amendment with ETTL
Engineers & Consultants, Inc. for Construction Materials
Inspection and Testing Services for Section 19-1 Part D
of the Integrated Pipeline Project**

Ed Weaver, IPL Program Manager

Consider Approval of Contract Amendment with ETTL Engineers and Consultants Inc. for Construction Materials Inspection and Testing Services for Section 19-1 Part D (PL191D) of the Integrated Pipeline Project



Agenda Item 6:

Consider Approval of Change Order with McKee Utility Contractors Inc. for Cedar Creek Section 2 Pipeline Replacement Phase 1B

Jason Gehrig, Infrastructure Engineering Director

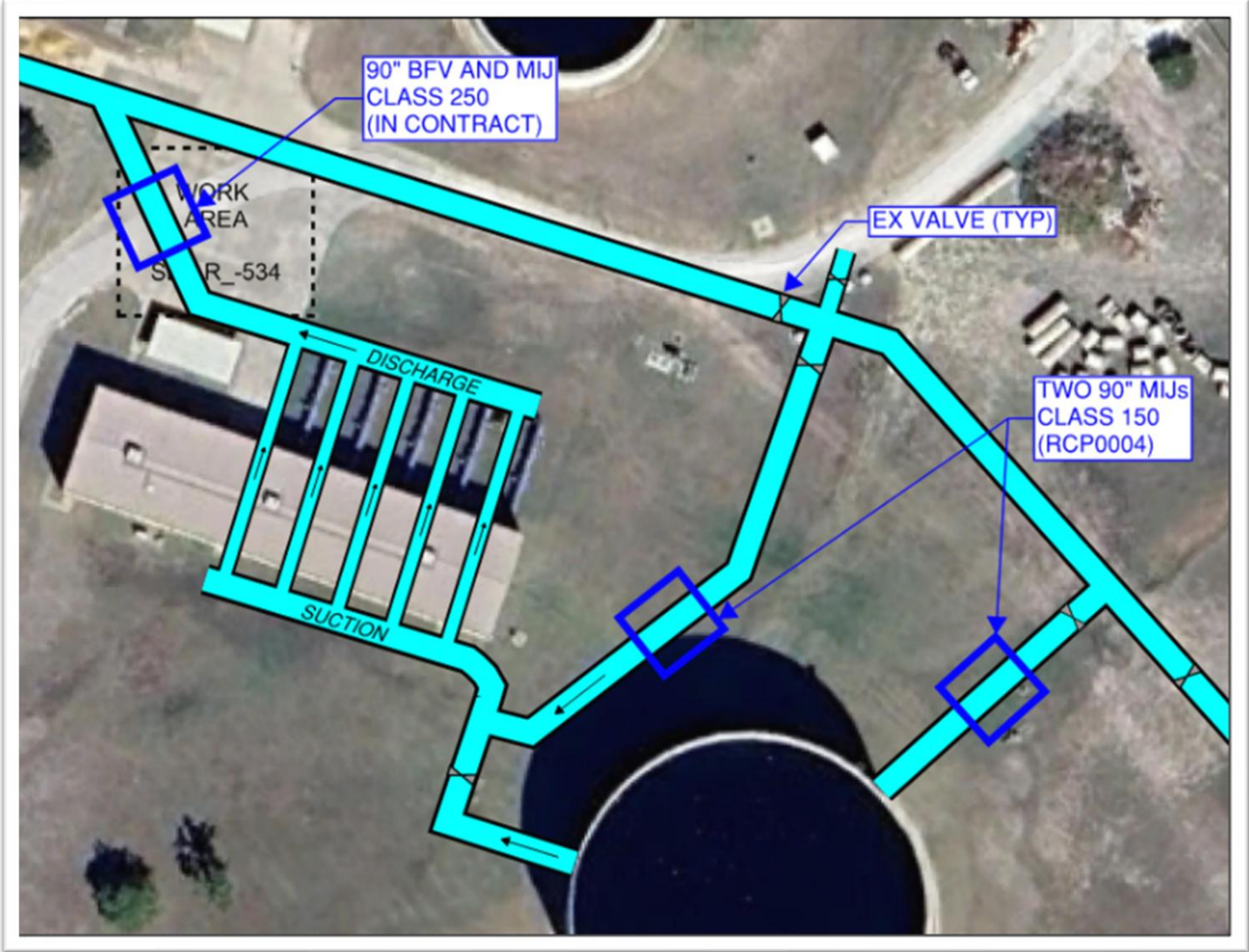
Cedar Creek Section II Pipeline Replacement Construction

Monolithic Isolation Joints at Richland Chambers Pump Station in Ennis



Cedar Creek Section II Pipeline Replacement Construction

Monolithic Isolation Joints at Richland Chambers Pump Station in Ennis



Agenda Item 7:

**Consider Approval of Purchase from Freeit of
Replacement SCADA Servers**

Jason Gehrig, Infrastructure Engineering Director

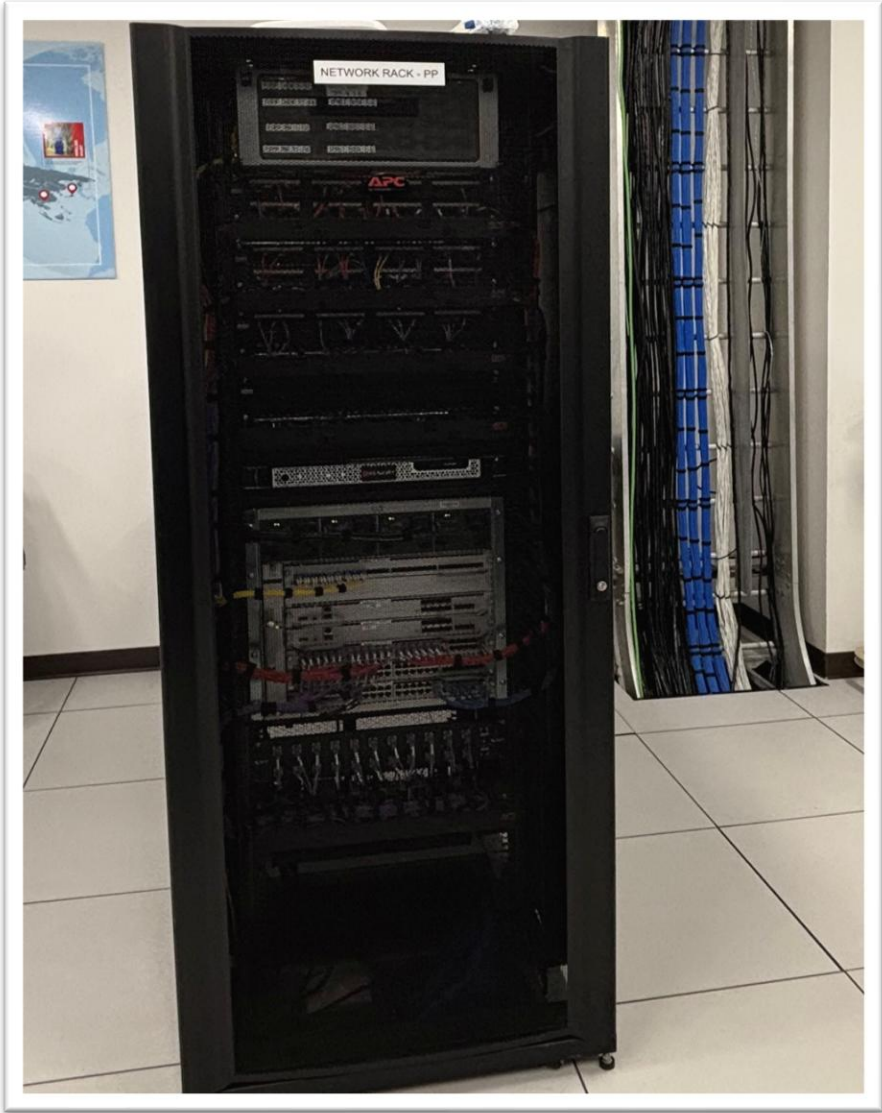
SCADA Operator Station



Current State - SCADA Servers alongside Operator Workstations



Recommended State – New SCADA Servers in Lockable Cabinets





Agenda Item 8:

**Consider Approval of Agreement with Republic for
Production Services for the Regional Water
Conservation Public Awareness Campaign**

Jennifer Owens, Director of Environmental Services

Agenda Item 9:

Consider Approval of Agreement with RO Two Media, LLC for Media Purchase Services for the Regional Water Conservation Public Awareness Campaign

Jennifer Owens, Director of Environmental Services



Agenda Item 10:

Consider Approval of Contract with Solid Bridge Construction for Riverside Drive Slope Protection

Darrell Beason, Chief Operations Officer

Riverside Drive Slope Protection



Agenda Item 11:

Consider Approval of Authorizing the District to Submit an Application to the Texas Division of Emergency Management to Obtain Funding for KBR Third Cell Construction and to Enter into an Agreement with the Federal Emergency Management Agency

Sandy Newby, Chief Financial Officer

Agenda Item 12:

**Consider Approval of Texas Water Development Board
Financial Assistance Application for Water Supply and
Infrastructure Grant for the Construction of Phase 4 of
the Cedar Creek Pipeline Replacement Project**

Sandy Newby, Chief Financial Officer

The background of the slide is a close-up photograph of water. It features a series of concentric, overlapping ripples that create a textured, shimmering effect. The water is a clear, light blue color, and the lighting highlights the individual droplets and bubbles, giving it a sense of depth and movement.

PRESENTATION

100 Miles Strong: Celebrating the Integrated Pipeline

Dan Buhman, General Manager



100 Miles Strong: Celebrating the Integrated Pipeline

Today's recognition reflects those present at today's meeting and is not a complete list. This project was supported by many valued partners, and we appreciate all their contributions.

- AECOM Technical Services, Inc.
- Caledonia Construction Management
- Carollo Engineers
- CH2M Hill Engineers, Inc.
- City of Dallas Water Utilities
- Freese & Nichols, Inc.
- HDR Engineering, Inc.
- Lekha Tax
- Mott McDonald
- Pronghorn Flats
- Williams and Hope
- Shaffer Creative
- Steel Inspectors of Texas, Inc.
- Plus Six Engineering, LLC

The background of the slide is a close-up photograph of water. It features a large, circular ripple pattern on the left side, transitioning into a dense field of smaller, overlapping ripples and bubbles on the right. The water is clear and bright, with a light blue tint. The lighting creates highlights and shadows on the water's surface, giving it a textured, three-dimensional appearance.

PRESENTATION

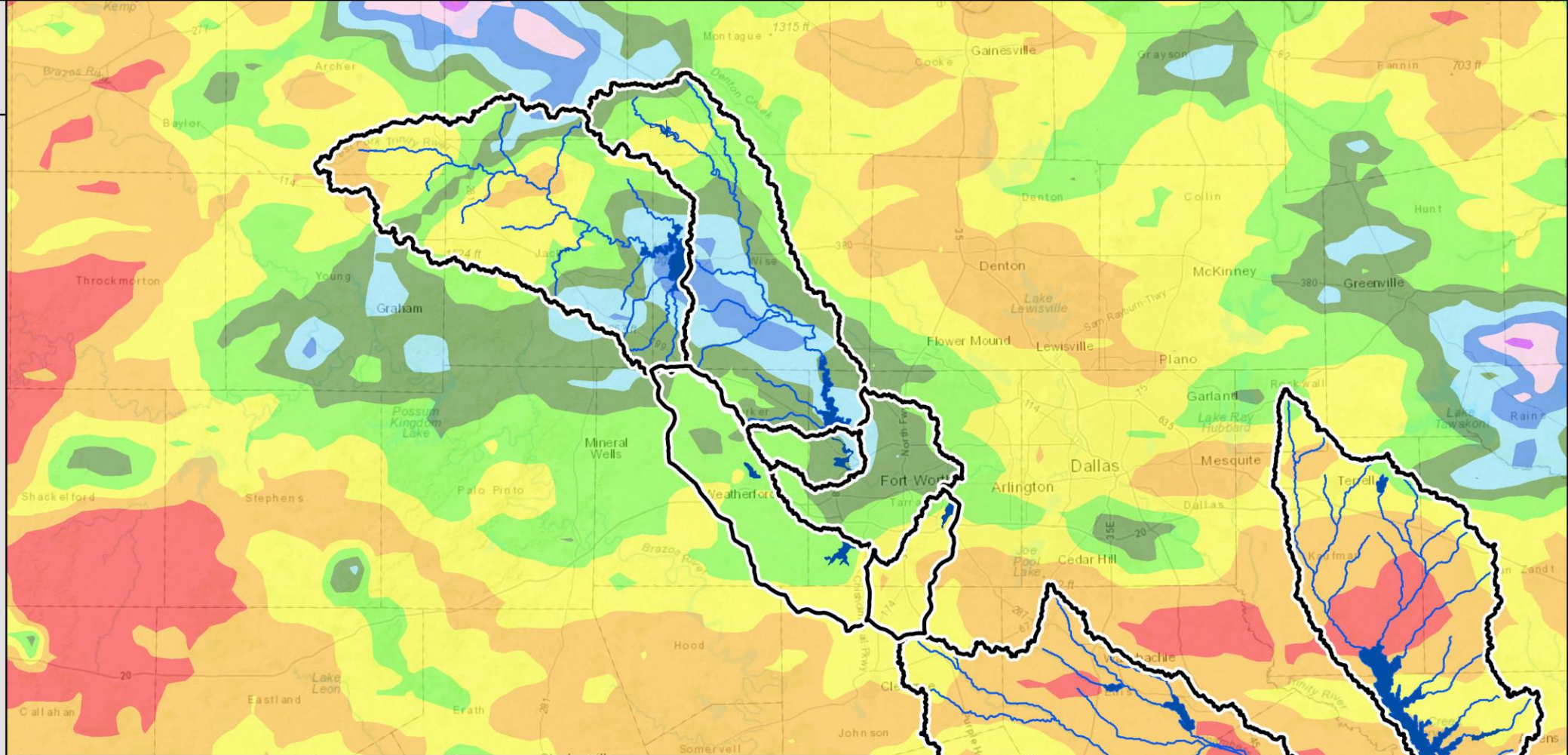
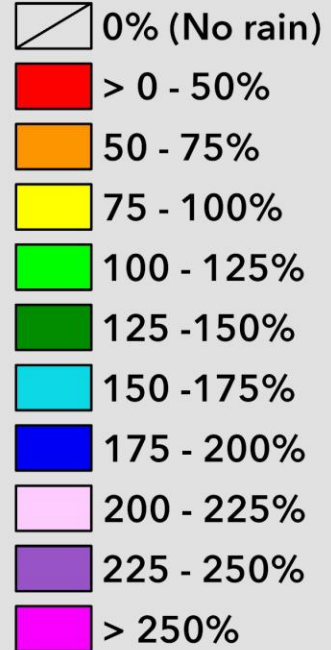
Water Resources

Rachel Ickert, Chief Engineering Officer

Past 30 Days

(4/13/2026 - 5/13/2026)

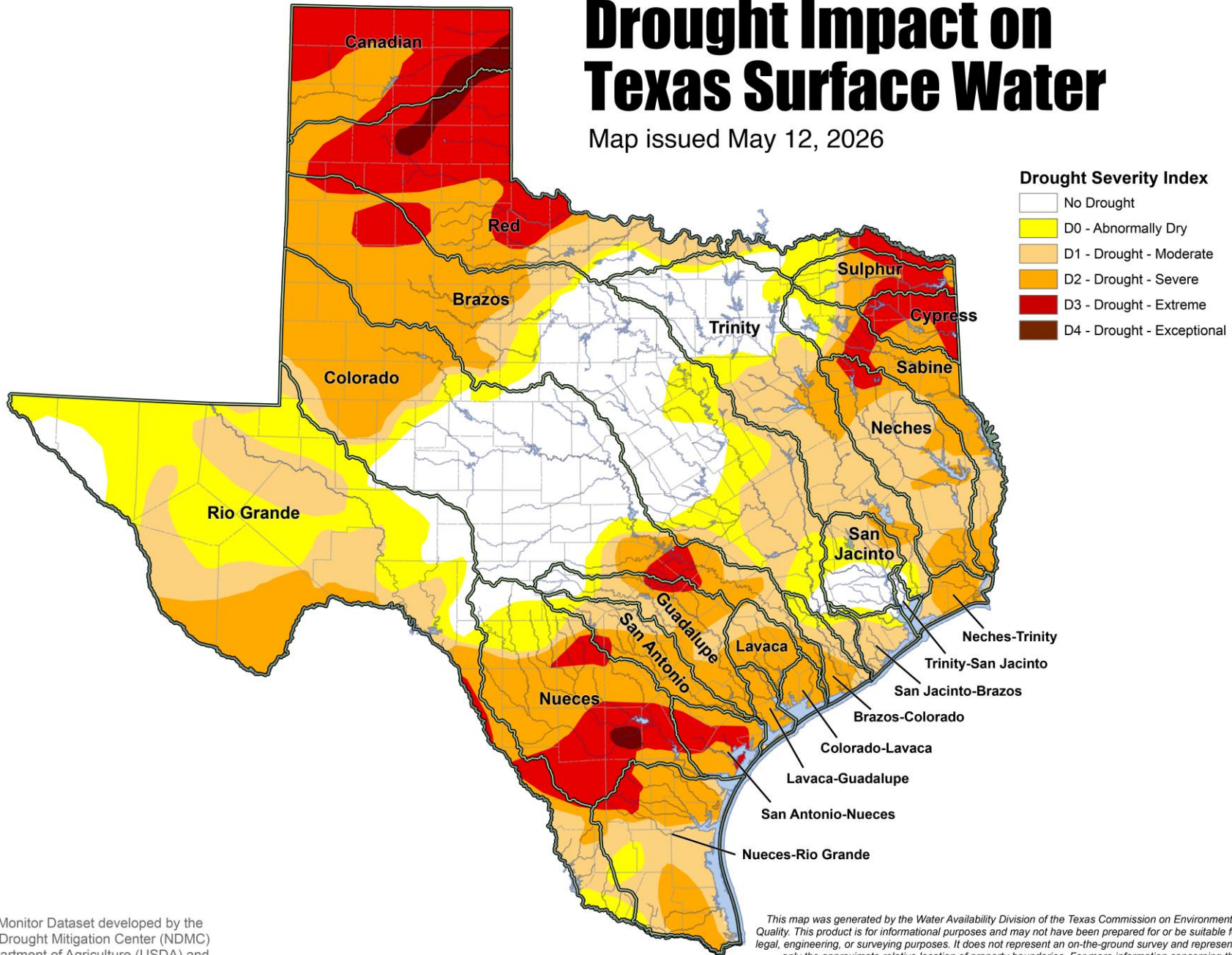
Percent of Normal Rainfall



Watershed	Observed (inches)	Normal (inches)	Departure (inches)	% of Normal
Lake Bridgeport	4.4	3.5	0.9	126%
Eagle Mountain Lake	4.8	3.7	1.1	130%
Lake Worth	4.7	3.6	1.1	131%
Fort Worth Floodway	4.6	3.6	1.0	128%
Benbrook Lake	3.8	3.6	0.2	106%
Lake Arlington	3.1	3.7	-0.6	84%
Cedar Creek Reservoir	3.1	4.1	-1.0	76%
Richland Chambers Reservoir	2.7	4.0	-1.3	68%

Drought Impact on Texas Surface Water

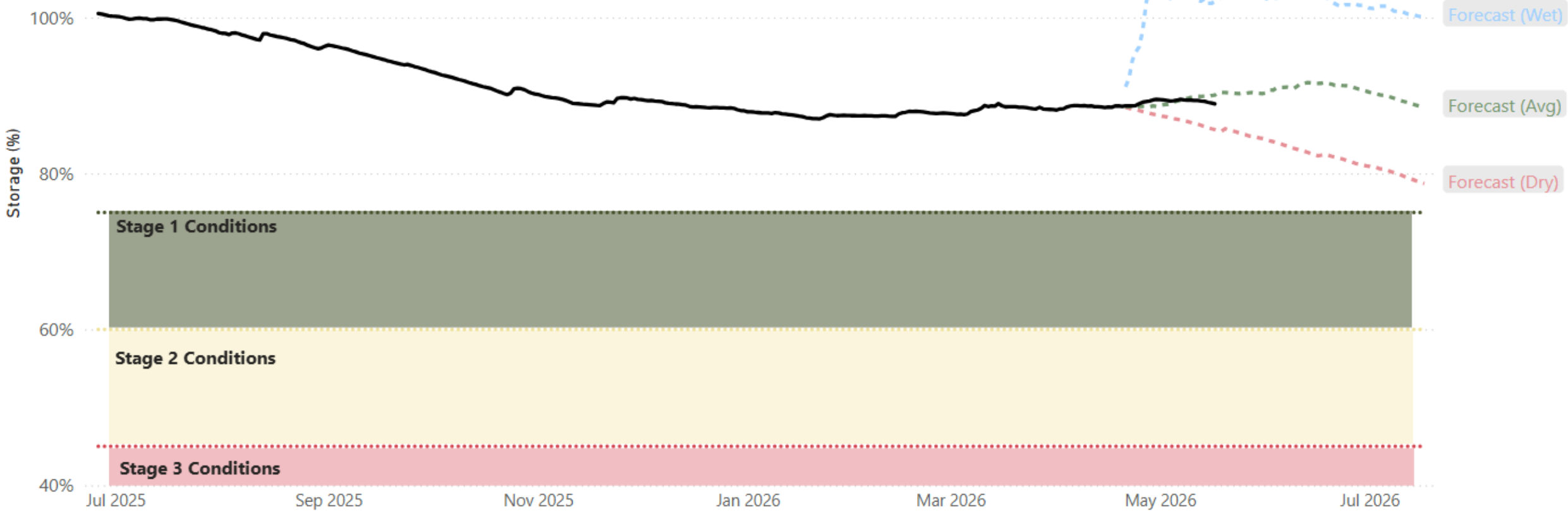
Map issued May 12, 2026

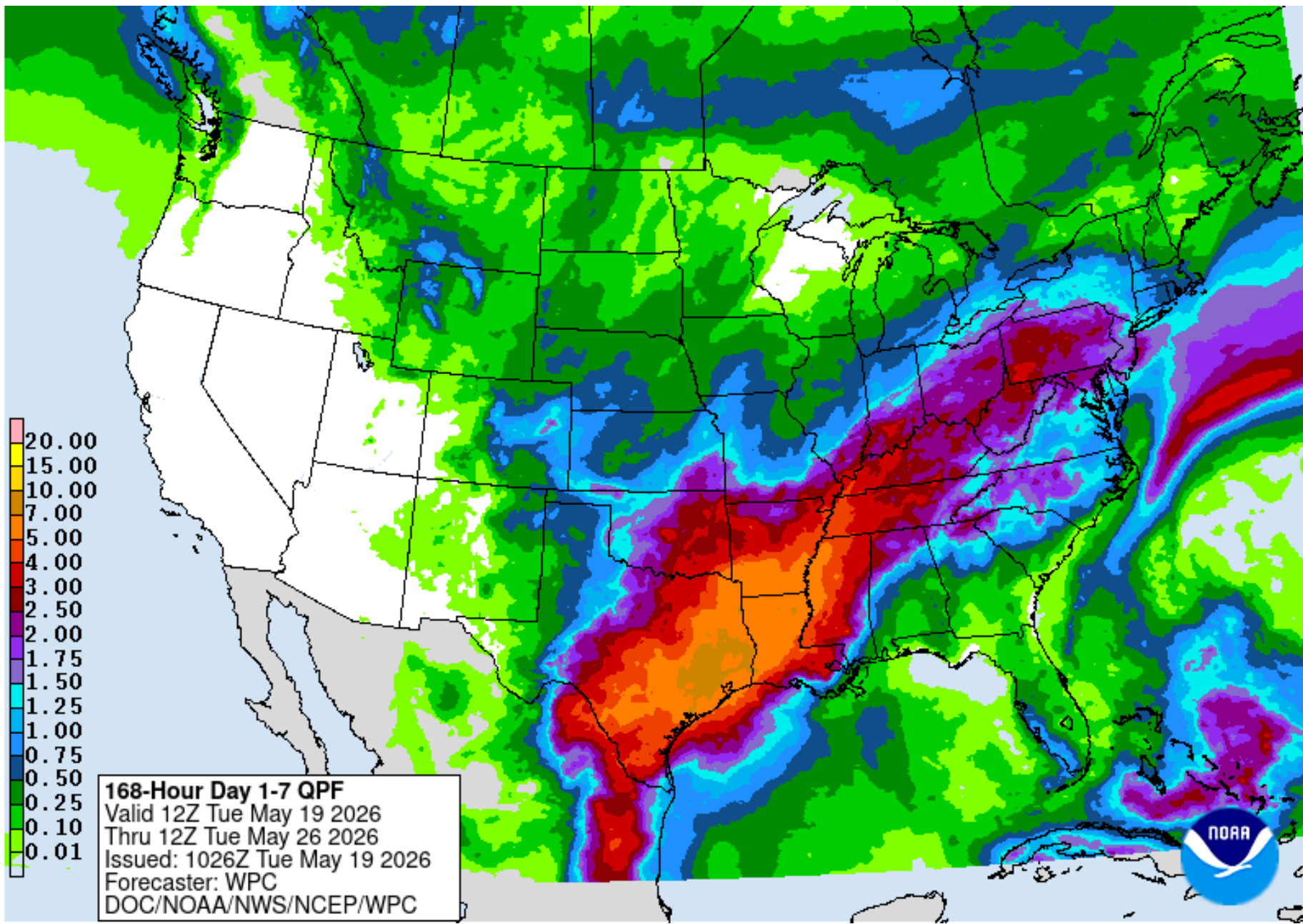


Drought Monitor Dataset developed by the National Drought Mitigation Center (NDMC), U.S. Department of Agriculture (USDA) and National Oceanic & Atmospheric Administration (NOAA)

This map was generated by the Water Availability Division of the Texas Commission on Environmental Quality. This product is for informational purposes and may not have been prepared for or be suitable for legal, engineering, or surveying purposes. It does not represent an on-the-ground survey and represents only the approximate relative location of property boundaries. For more information concerning this map, contact the Water Availability Division at (512)239-4600.

Historical and Projected Total Water Supply Storage

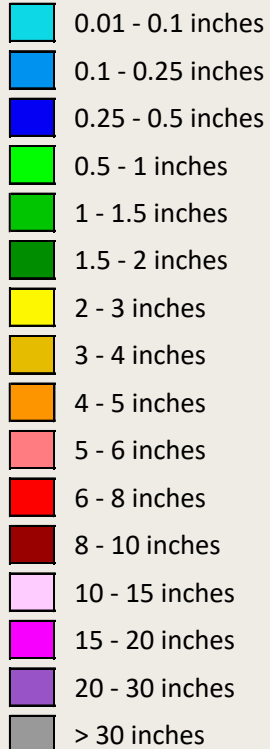




Rainfall Forecast



LEGEND



Note on QPF - QPFs depict the amount of liquid precipitation expected to fall during a specified time period in the future. Because precipitation can vary significantly over short distances, QPFs are reported as the expected "areal average" on a 20-kilometer (12.4 mile) grid. Several factors contribute to QPF estimates, including the current state of the atmosphere, modeled pressure systems, satellite trends, and manual adjustments made by forecasters.

20MAY2026 (WED) - 24MAY2026 (SUN) Duration: 5 Days



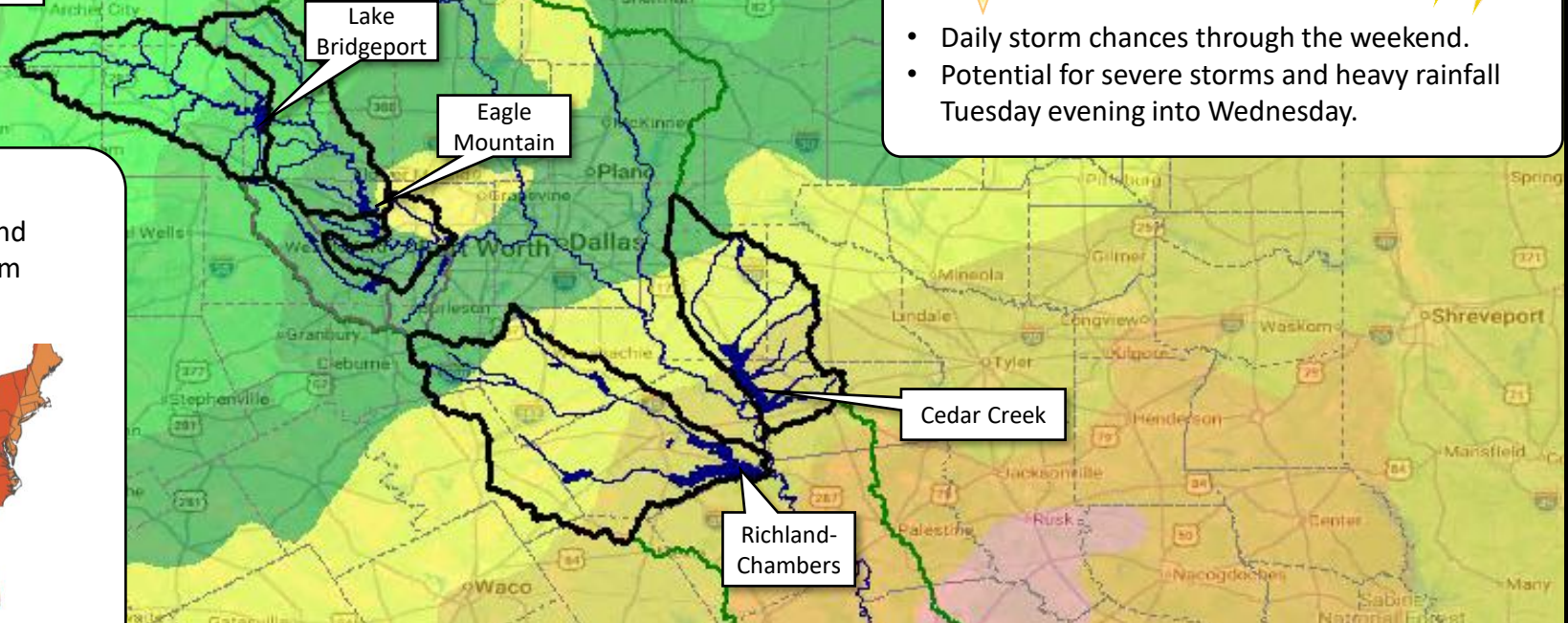
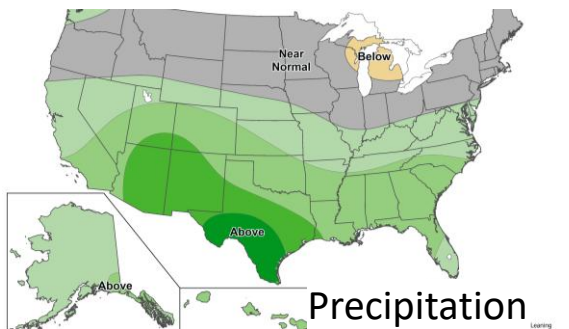
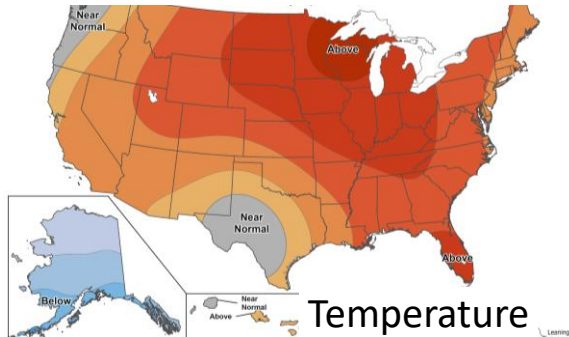
Key Points



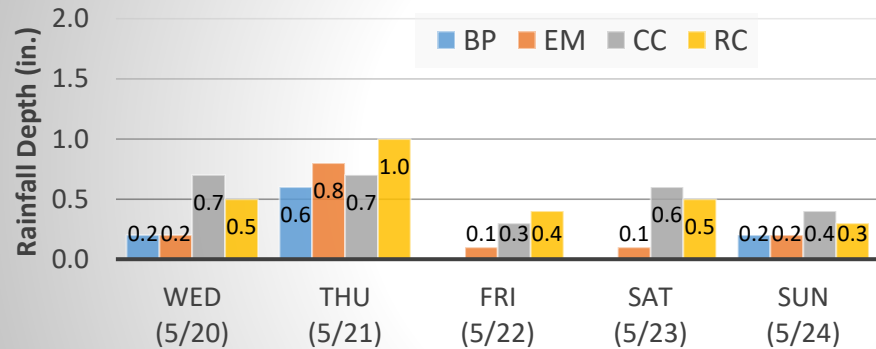
- Daily storm chances through the weekend.
- Potential for severe storms and heavy rainfall Tuesday evening into Wednesday.

8 to 14 Day Outlook

Above normal temperatures and precipitation are expected from May 25 to 31



Daily Forecasted Rainfall Totals



Reservoir	Forecast Total (in.)
BP	1.0
EM	1.4
CC	2.7
RC	2.7

Precipitation forecast is obtained from NOAA's NWS and provided by the Weather Prediction Center (WPC). The data is processed and displayed using USACE Met-Vue software

NWS Forecast Time: 2026-05-18 1200 GMT



To follow reservoir monitoring updates:

www.trwd.com/lake-level-blog

trwd.onerain.com

The background of the slide is a close-up photograph of water. It features a series of concentric, overlapping ripples that create a textured, shimmering effect. The water is a clear, light blue color, and the light reflects off the surface, creating bright highlights and darker shadows within the ripples. The overall appearance is that of clean, fresh water.

PRESENTATION

Panther Island Design

Susan Alanis, Panther Island Program Director

Code History

KEY EFFORTS HAVE SHAPED PANTHER ISLAND'S URBAN DESIGN VISION TO WHAT IT IS TODAY



TRINITY UPTOWN PLAN (2004)

- INITIAL VISION & IDENTITY ASPIRATIONS
- DENSITY
- PROGRAM DISTRIBUTION
- OPEN SPACE NETWORK
- CHARACTER



Panther Island Form Based Zoning District
Zoning Standards and Guidelines

FORM-BASED CODE (2006, 2010, 2016)

- FRAMEWORK PLAN
- ILLUSTRATIVE SITE PLAN
- STREETS
- WATERWAYS / CANALS
- OPEN SPACE NETWORK
- DENSITY
- LAND USES & DENSITY
- BLOCK TYPOLOGIES
- FURNISHINGS
- SIGNAGE
- PROGRAM DISTRIBUTION



PANTHER ISLAND CANAL DESIGN GUIDELINES
FORT WORTH, TEXAS
12-06-2016

CANAL DESIGN STANDARDS (2016)

- CANAL FRAMEWORK
- PRECEDENTS
- DESIGN FEATURES
- EDGE TREATMENTS
- GROUND MATERIAL
- SEATING
- PLANT SPECIES



INFRASTRUCTURE PLANNING (ONGOING)

- WATER
- WASTEWATER
- STORMWATER / CANALS
- ONCOR ELECTRICITY



Panther Island Form Based Zoning District
Zoning Standards and Guidelines

PANTHER ISLAND

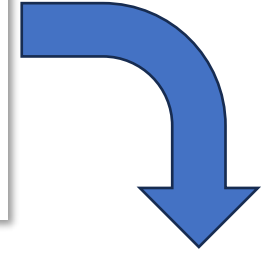
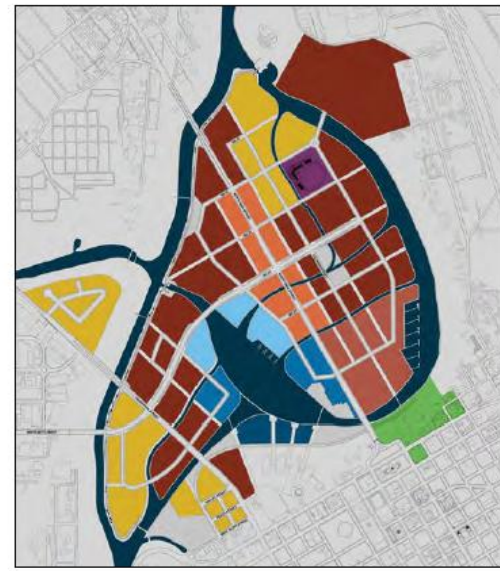
Code Update

Main objective: Implement Vision 2.0

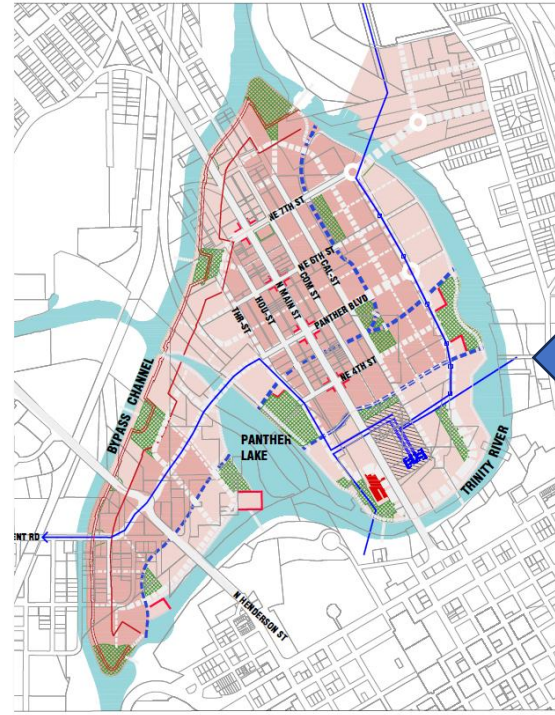
Additional inputs:

- Ongoing development
- Stakeholder workshops
- Panther Blvd alignment
- Canal System Manual

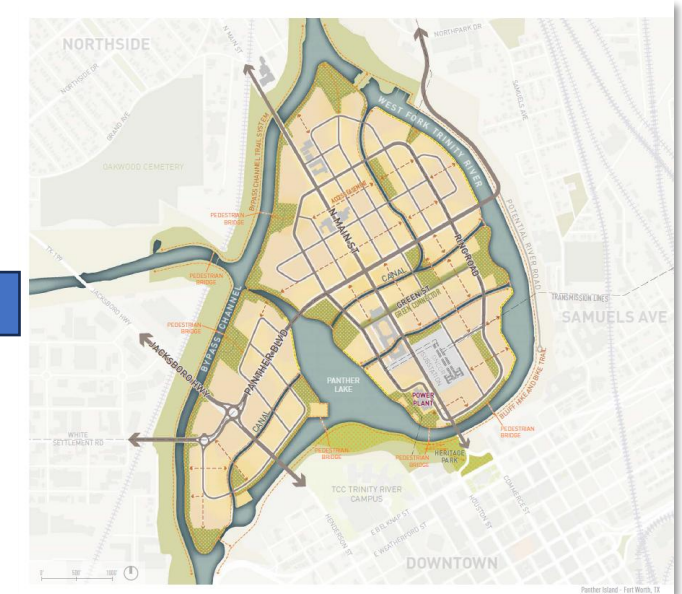
ORIGINAL CODE



REVISED CODE



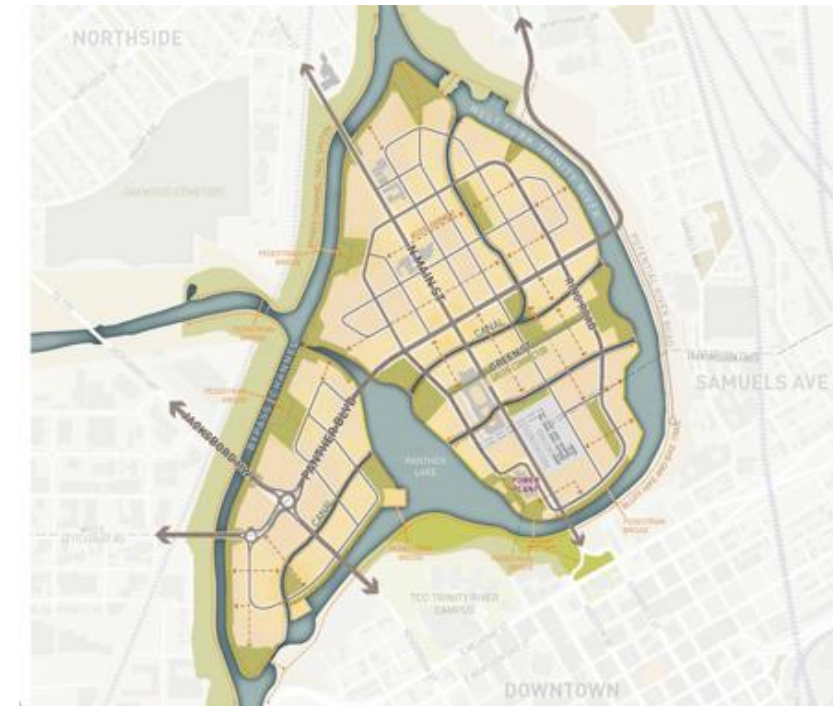
36



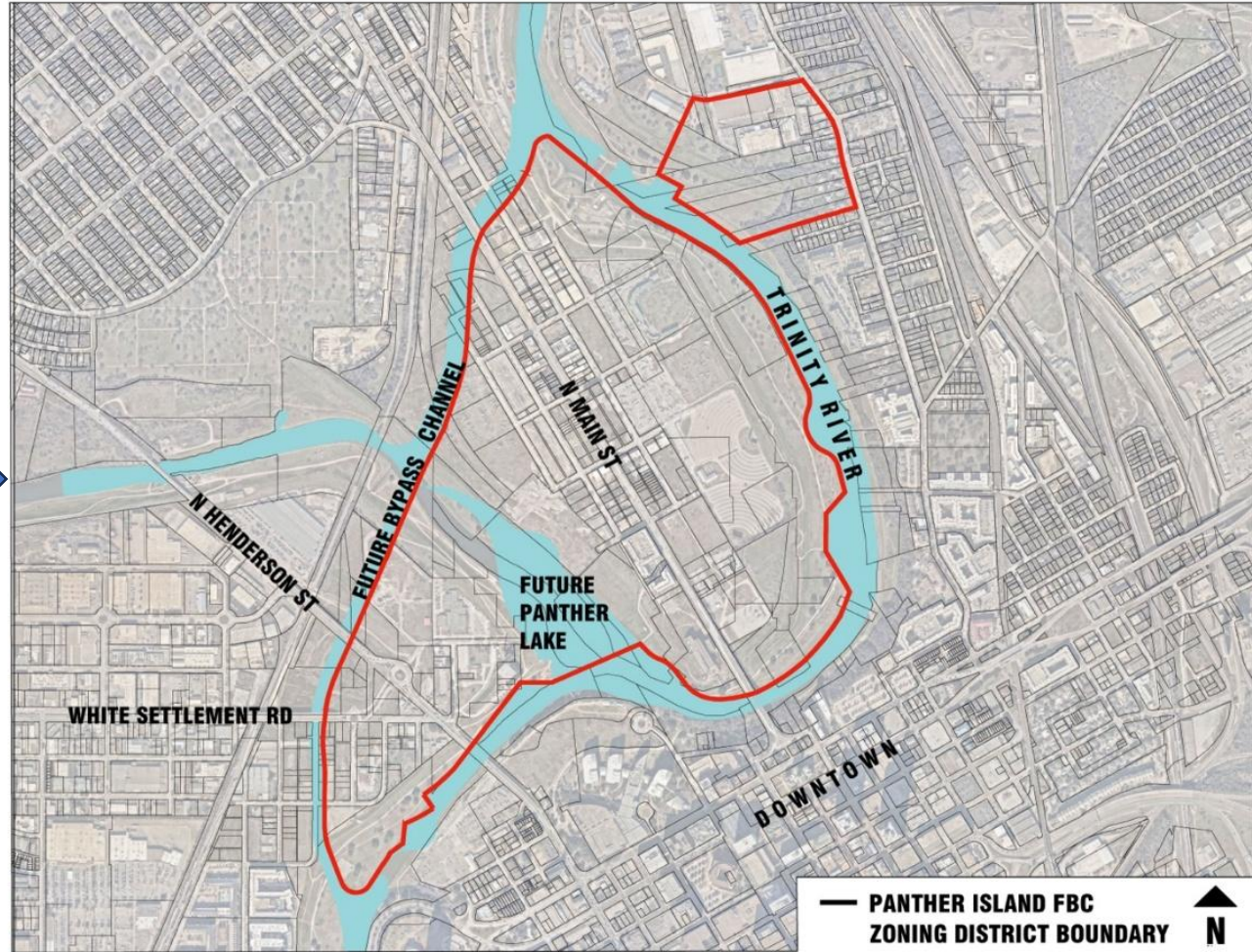
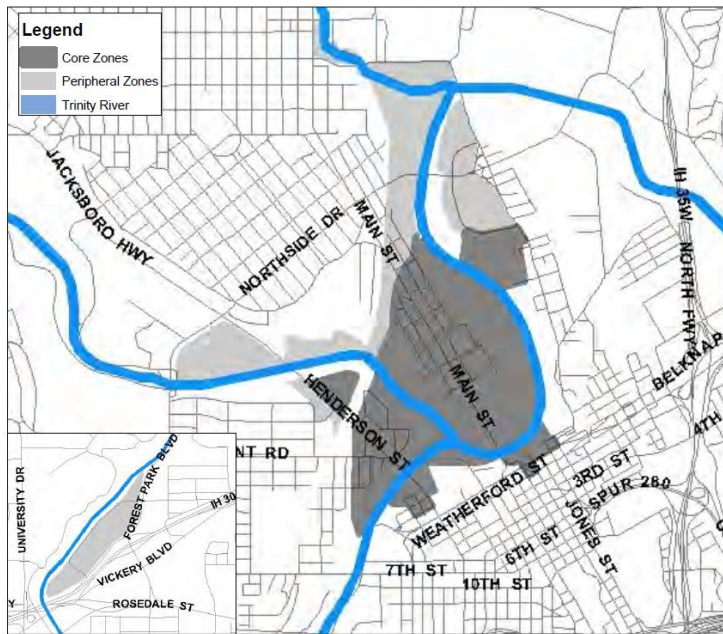
VISION 2.0

Key Recommendations - Vision 2.0

- **Robust open space network**
- **Access to waterfront** and canal system to connect open space network
- More **compact block structure** and fine grain street network
- **View corridor preservation and development intensity** in the middle of the island



New Boundary



Map 1-1: FBC

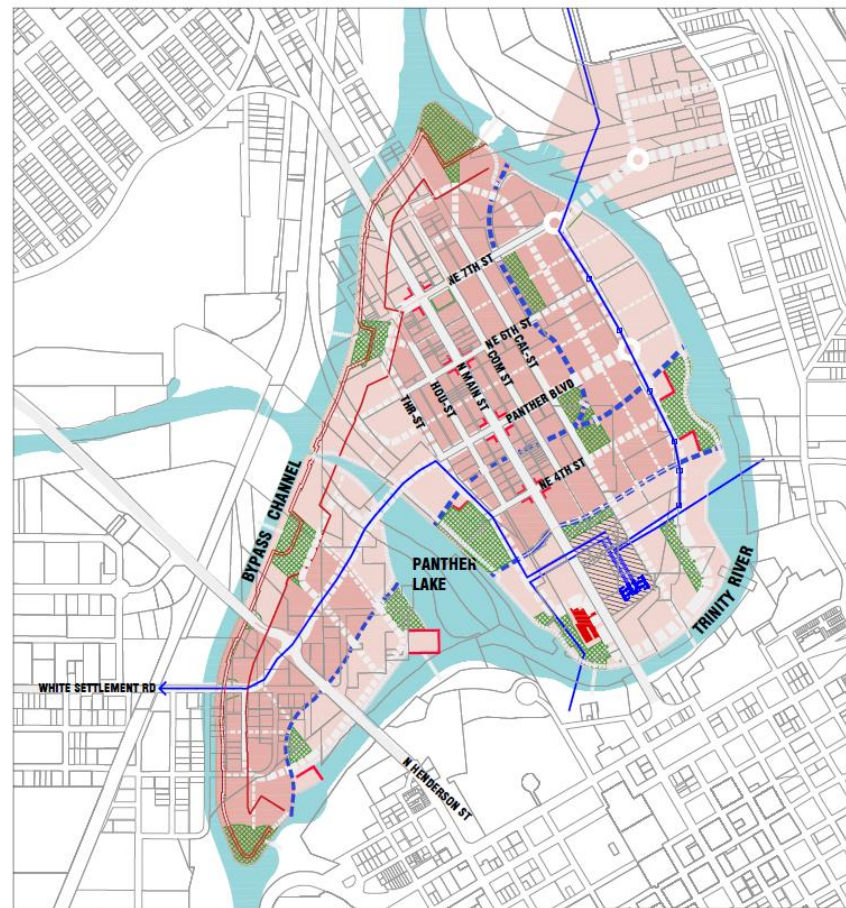
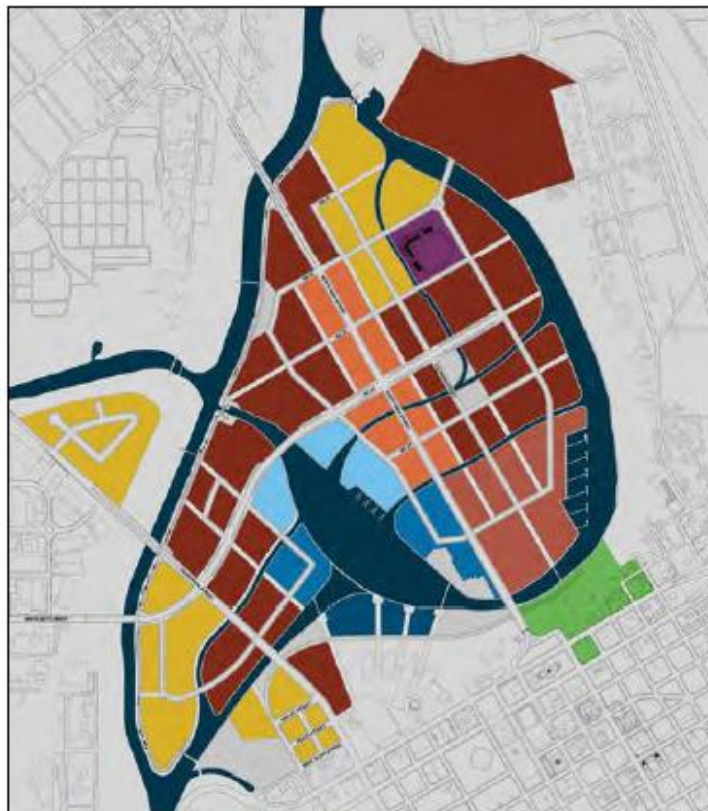
Principles

- Added **Vision 2.0** Guiding Principles
- Updated **General Development Principles** to emphasize waterfront/open space and deemphasize residential development
- Added references to the **Stockyards** in addition to Northside, Downtown and the Cultural District
- **View Corridors:** Sightlines to Courthouse, Downtown, and waterfront open spaces

Administration

- References **TRWD Canal System Manual**
- **Defines authority** of FBC Administrator, Urban Design Commission, PI Program Office and PI Design Review Committee
- Adds more **administrative authority**

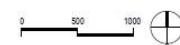
Regulating Plan: Development Zones



REGULATING PLAN: GENERAL

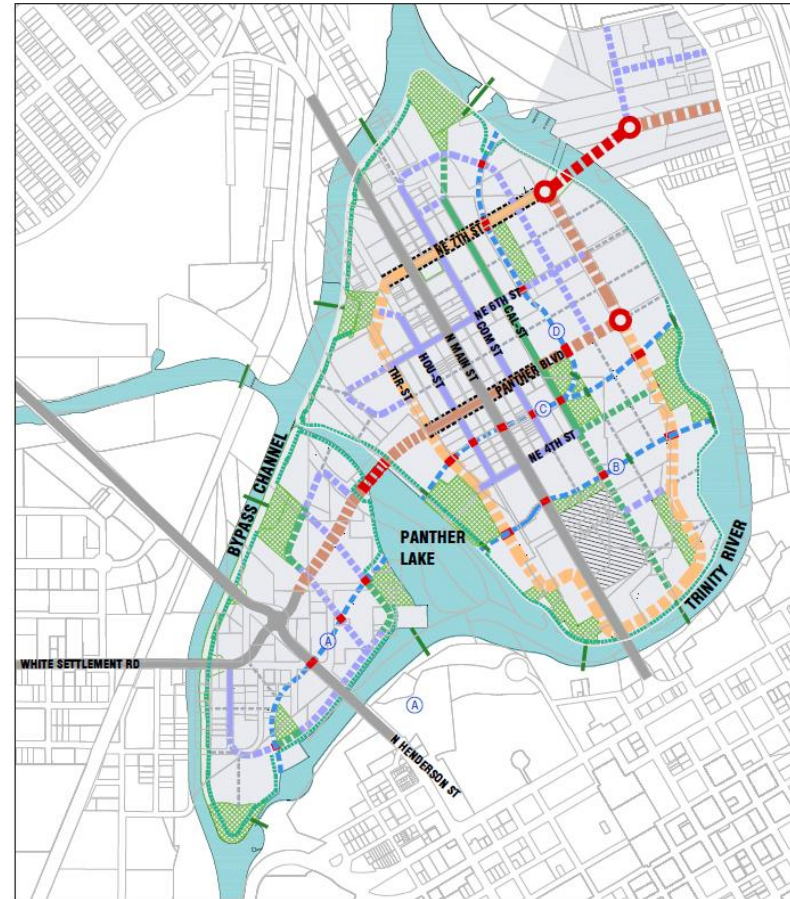
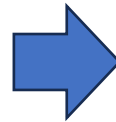
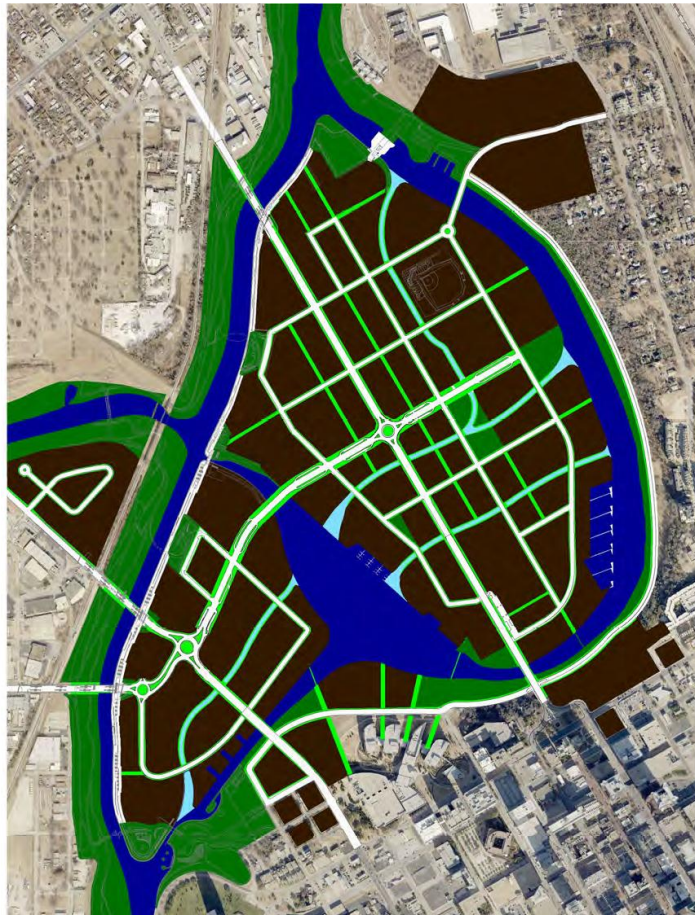
- PI-CORE
- PI-EDGE
- RECOMMENDED OPEN SPACE
- EXIST. ONCOR SUBSTATION
- EXIST. HISTORIC POWER STATION
- T.R.W.D. CANAL R.O.W.
- T.R.W.D. OWNERSHIP BOUNDARY
- OVERHEAD TRANSMISSION LINES
- REQ. GROUND FLOOR COMMERCIAL

STREET ABBREVIATIONS:
 CAL-ST CALHOUN ST
 COM-ST COMMERCE ST
 HOU-ST N HOUSTON ST
 THR-ST N THROCKMORTON ST



DRAFT 2-12-26

Regulating Plan: Streets and Mobility



REGULATING PLAN: STREETS & MOBILITY

- CANAL (LETTER IDENTIFIES CANAL SEGMENT)
- OVERHEAD TRANSMISSION LINES
- RECOMMENDED OPEN SPACE
- EXIST. ONCOR SUBSTATION

STREET TYPES & MOBILITY ELEMENTS: (REFER TO CORRESPONDING SECTIONS)

NOTE: SOLID LINES REPRESENT EXISTING STREET ROW WITH FIXED ALIGNMENT, DASHED LINES REPRESENT PROPOSED R.O.W. ALIGNMENT

- EXISTING STREET/BRIDGE
- PANTHER BOULEVARD (ARTERIAL)
- PANTHER BOULEVARD - EXPANDED EXIST. R.O.W.
- PANTHER LOOP (COLLECTOR)
- PANTHER LOOP - EXPANDED EXIST. R.O.W.
- NEIGHBORHOOD STREET (LOCAL STREET)
- SHARED STREET (LOCAL STREET)
- WATERFRONT ACCESS
- PEDESTRIAN CONNECTOR
- PEDESTRIAN BRIDGE
- VEHICULAR / PEDESTRIAN BRIDGE
- PROPOSED ROUND-ABOUT (PENDING FURTHER TPW/TRWD EVALUATION)

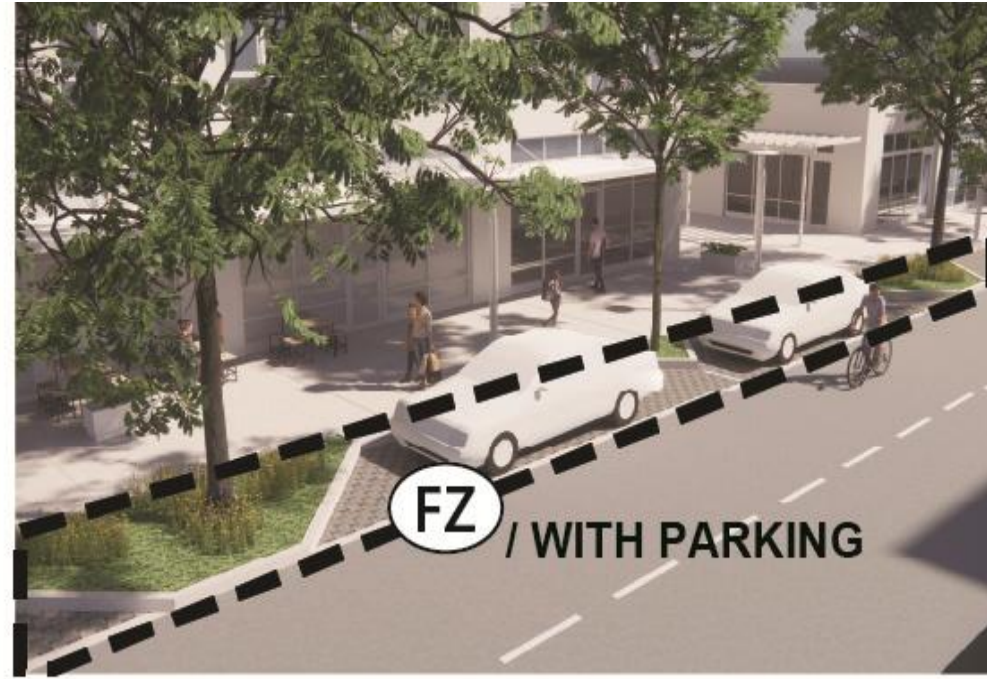
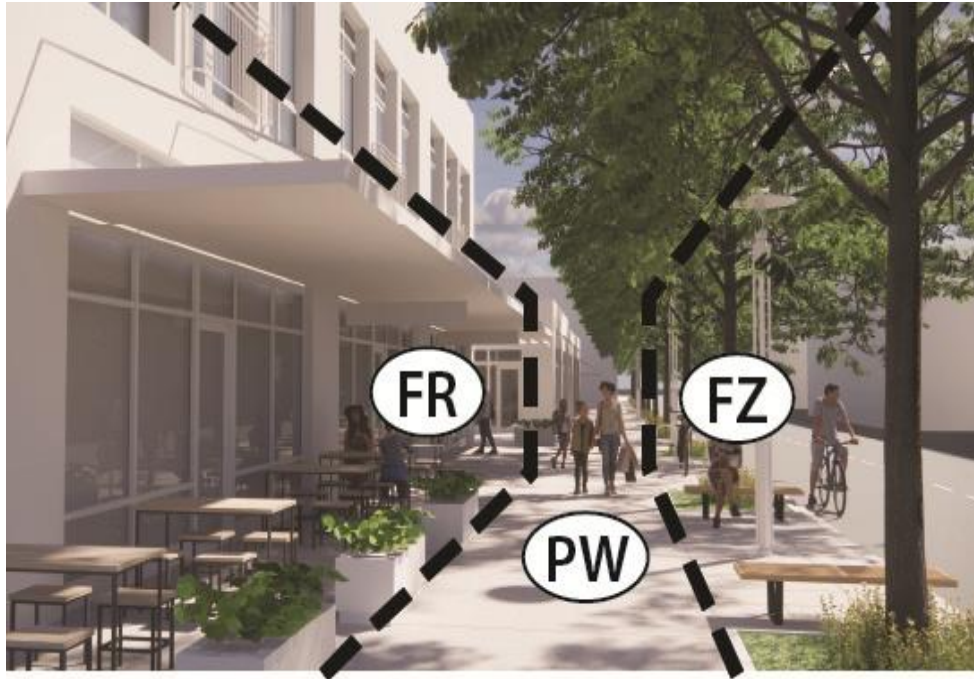
STREET ABBREVIATIONS:

- CAL-ST CALHOUN ST
- COM-ST COMMERCE ST
- HOU-ST N HOUSTON ST
- THR-ST N THROCKMORTON ST



DRAFT: 3-23-26

Sidewalks and Streetscape Standards



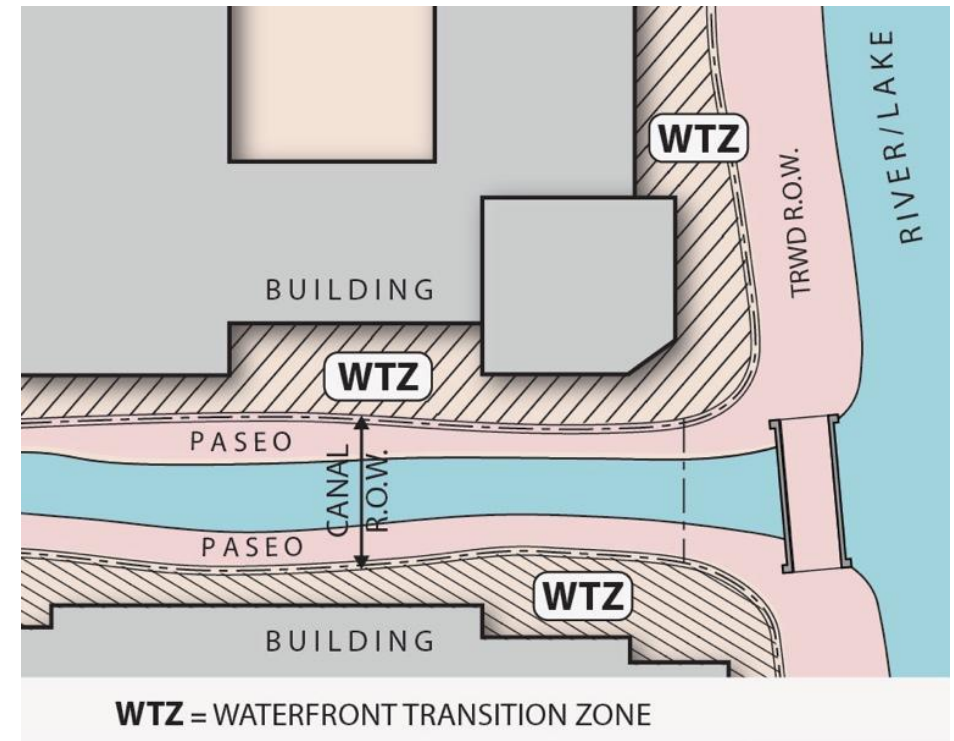
FR = FRONTAGE ZONE

PW= PEDESTRIAN WAY

FZ= FURNISHING ZONE

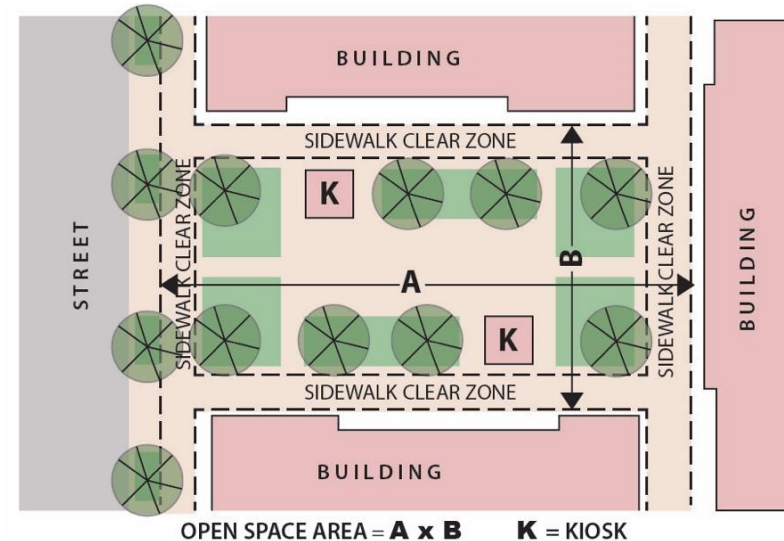
Waterfront Standards

- References **TRWD Canal System Manual**
- Defers **Bypass Channel** to future regulations on adjacent property
- Establishes **waterfront transition zones** on private property

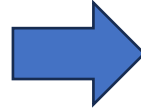
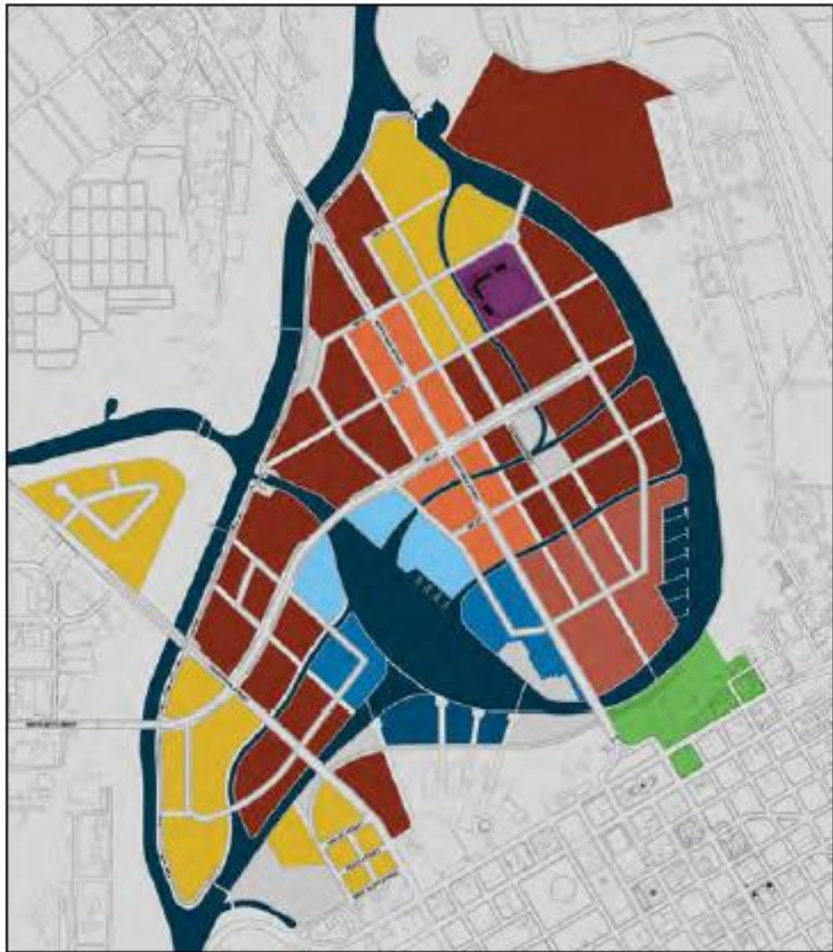
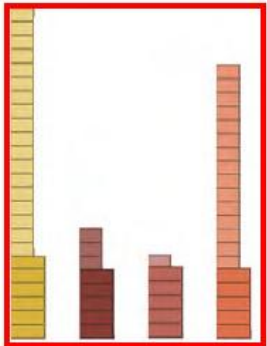


Public Open Space

- Incorporates Vision 2.0 goal of **15% open space**.
- Adds standards for **landscape, 50% tree canopy, furnishing, kiosks and building frontages**
- Adds **guidelines for fountains, public art, and surrounding sidewalks**



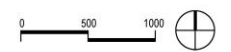
Urban Form Standards



REGULATING PLAN: GENERAL

- PI-CORE
- PI-EDGE
- RECOMMENDED OPEN SPACE
- EXIST. ONCOR SUBSTATION
- EXIST. HISTORIC POWER STATION
- T.R.W.D. CANAL R.O.W.
- T.R.W.D. OWNERSHIP BOUNDARY
- OVERHEAD TRANSMISSION LINES
- REQ. GROUND FLOOR COMMERCIAL

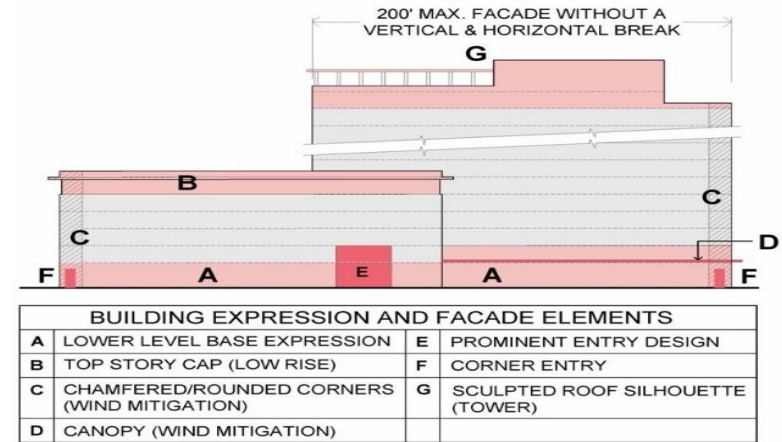
STREET ABBREVIATIONS:
 CAL-ST CALHOUN ST
 COM-ST COMMERCE ST
 HOU-ST N HOUSTON ST
 THR-ST N THROCKMORTON ST



PI-CORE: 4 – 24 stories
 PI-EDGE: 3 – 15 stories

Building Design

- Removes **specified exterior materials** precluded by State law
- **Enhances** glazing, façade variation, parking garage standards, etc.
- Adds **tower massing** guidelines
- Encourages **galleries, canopies, and waterfront balconies**



Additional Regulations

- **Landscaping on Private Property:** Planting and 40 – 50% Canopy Coverage
- **Parking:** Vehicular Plazas, Garages, Transitional Parking
- **Fencing and Screening**
- **Signage:** Consistent with downtown



Next Steps

- Stakeholder meetings on draft FBC: June 2026
- Adoption process: Summer 2026










Questions?



The background of the slide is an underwater scene with a deep blue color palette. Light rays penetrate from the surface, creating a shimmering effect. Numerous small, white bubbles are scattered throughout the water, particularly concentrated near the surface. The overall texture is fluid and dynamic.

Agenda Item 14:
Executive Session

Agenda Item 15:

Consider Approval of Authorization to Acquire Real Property Interests by Purchase for the Cedar Creek Pipeline Rehab Project

Steve Christian, Real Property Director



Agenda Item 16:

**Consider Approval of Settlement of Claims in the
Panther Island Canals Project - Miller International, Inc.
Lawsuit**

Steve Christian, Real Property Director

An underwater scene with clear blue water and light rays filtering through the surface. The water is a vibrant cyan color, and there are many small, bright particles or bubbles scattered throughout. The light rays create a shimmering effect, especially near the surface where the water is more turbulent.

Agenda Item 17:
Future Agenda Items

An underwater photograph showing the surface of the water at the top, with light rays and bubbles filtering through the clear blue water. The scene is serene and captures the play of light and movement in an aquatic environment.

Agenda Item 18:

Schedule Next Board Meeting

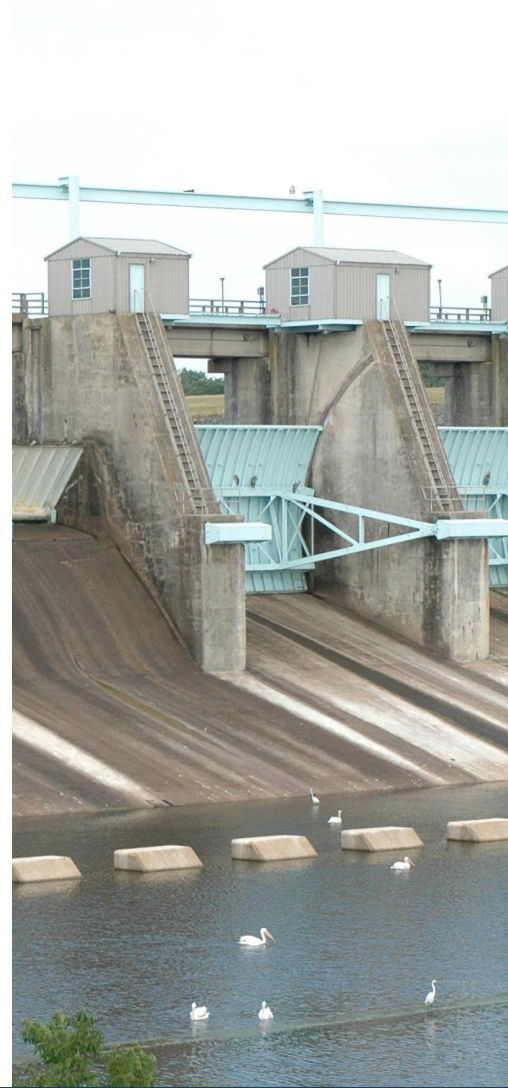
Tuesday June 16, 2026, at 9:00 AM

An underwater photograph showing the surface of the water at the top, with light rays and bubbles filtering through the clear blue water. The scene is serene and captures the play of light and movement beneath the surface.

Agenda Item 19:
Adjourn



**WATER
SUPPLY**



**FLOOD
PROTECTION**



RECREATION



CONSERVATION



FINANCIAL

