

The background of the slide is a close-up photograph of water. It features a series of concentric, overlapping ripples that create a textured, wavy pattern. Interspersed among these ripples are numerous small, clear bubbles of varying sizes, some of which are in sharp focus, giving the image a sense of depth and movement. The overall color palette is a range of blues, from light, airy tones to deeper, more saturated hues, contributing to a clean and professional aesthetic.

# **PRESENTATION**

## Water Resources

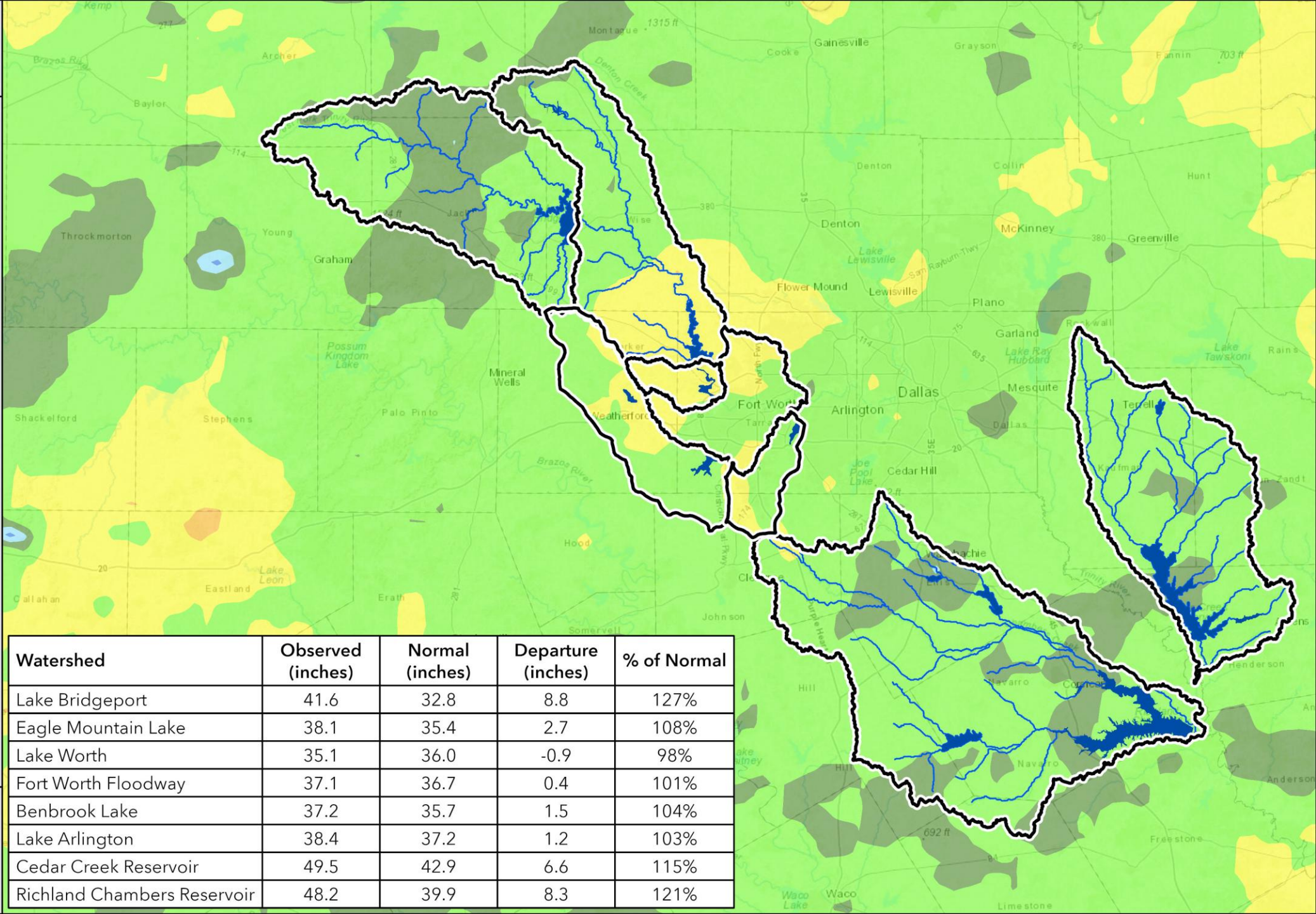
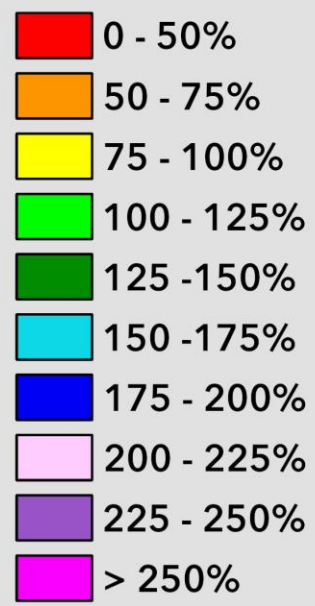
---

Rachel Ickert, Chief Engineering Officer



**Year to Date**  
(1/1/2025 - 12/31/2025)  
365 days

**Percent of  
Normal Rainfall**

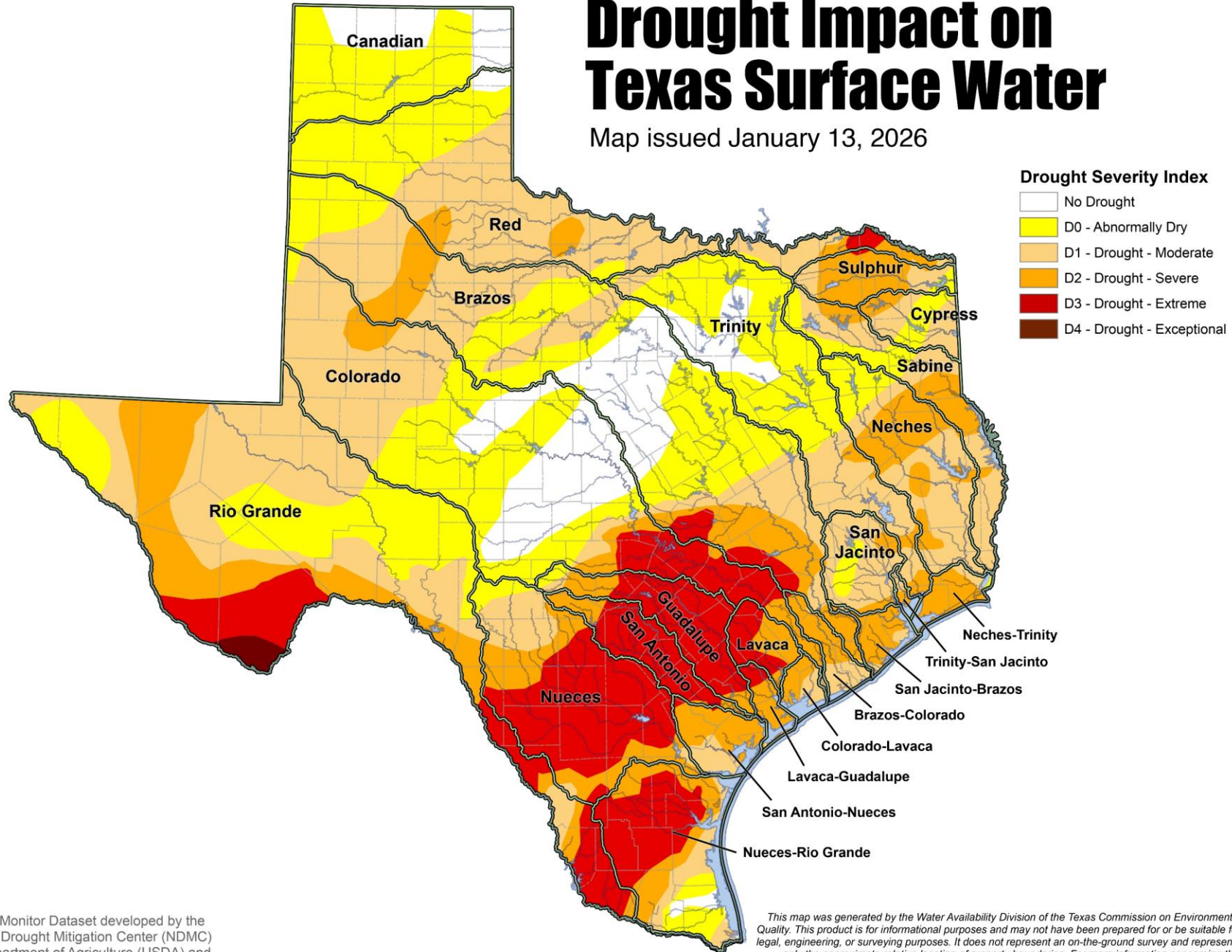


Watershed	Observed (inches)	Normal (inches)	Departure (inches)	% of Normal
Lake Bridgeport	41.6	32.8	8.8	127%
Eagle Mountain Lake	38.1	35.4	2.7	108%
Lake Worth	35.1	36.0	-0.9	98%
Fort Worth Floodway	37.1	36.7	0.4	101%
Benbrook Lake	37.2	35.7	1.5	104%
Lake Arlington	38.4	37.2	1.2	103%
Cedar Creek Reservoir	49.5	42.9	6.6	115%
Richland Chambers Reservoir	48.2	39.9	8.3	121%



# Drought Impact on Texas Surface Water

Map issued January 13, 2026



Drought Monitor Dataset developed by the National Drought Mitigation Center (NDMC) U.S. Department of Agriculture (USDA) and National Oceanic & Atmospheric Administration (NOAA)

This map was generated by the Water Availability Division of the Texas Commission on Environmental Quality. This product is for informational purposes and may not have been prepared for or be suitable for legal, engineering, or surveying purposes. It does not represent an on-the-ground survey and represents only the approximate relative location of property boundaries. For more information concerning this map, contact the Water Availability Division at (512)239-4600.

## System Storage 1/15/2026

87.5%

**Total**

**+ 0%**

86.7%

**West Fork**

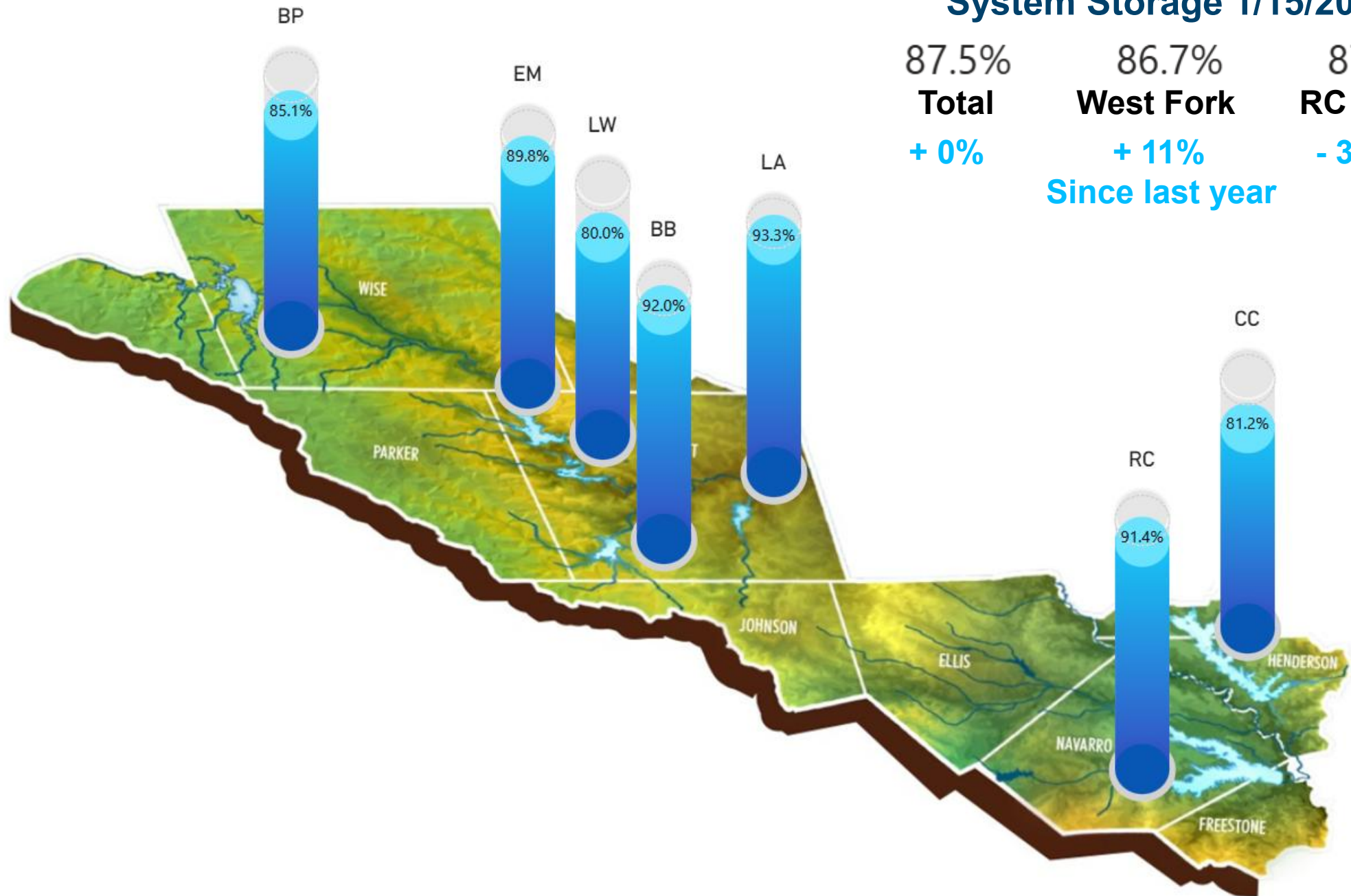
**+ 11%**

**Since last year**

87.7%

**RC & CC**

**- 3.5%**



# Historic and Projected Total Water Supply Storage

