

The background of the slide is a close-up photograph of water. It features a series of concentric ripples on the left side, transitioning into a more turbulent area on the right with many small, clear bubbles and complex light patterns reflecting off the water's surface. The overall color palette is various shades of light blue and white.

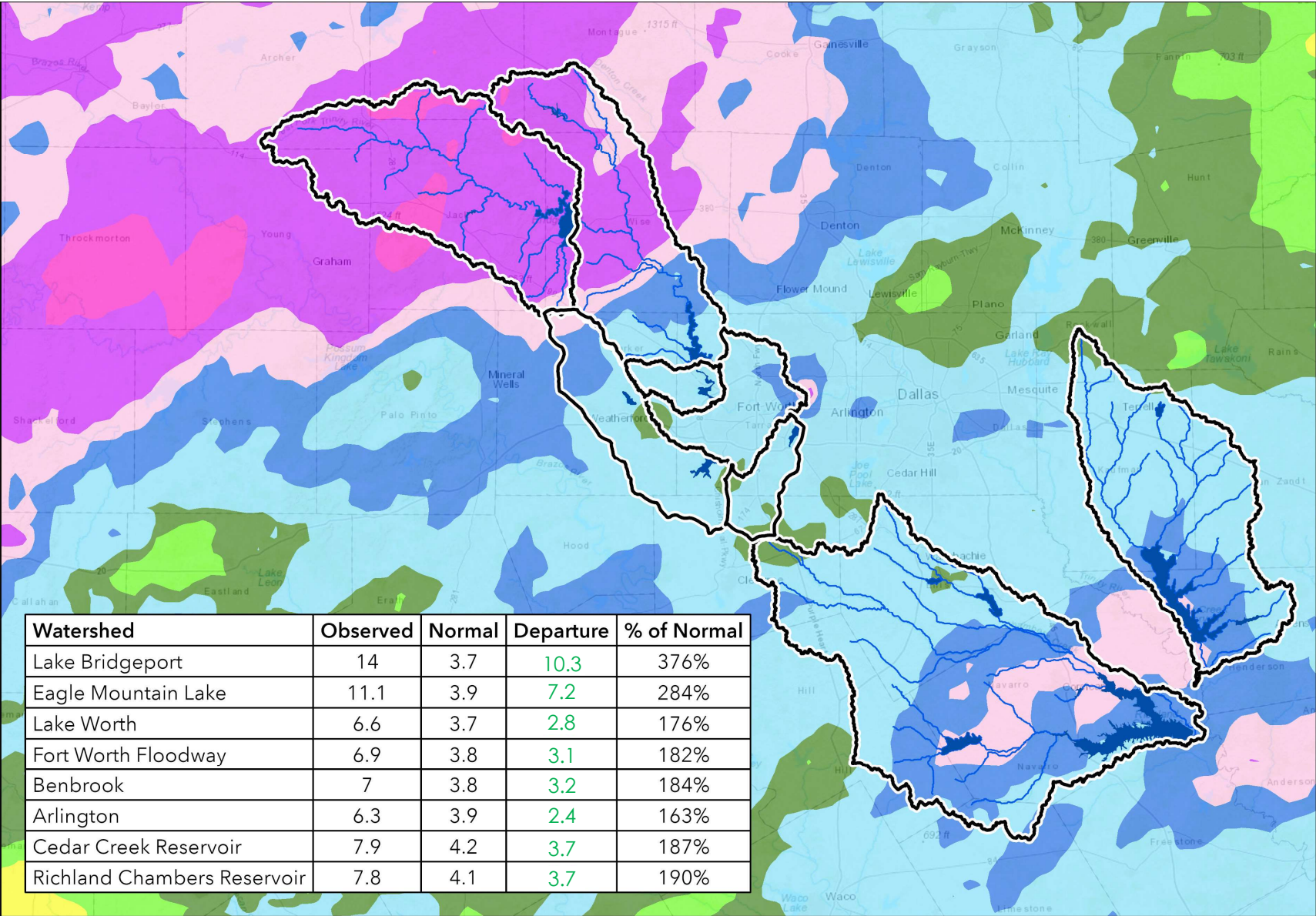
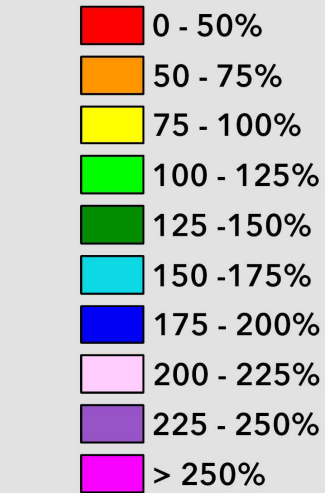
PRESENTATION

Water Resources

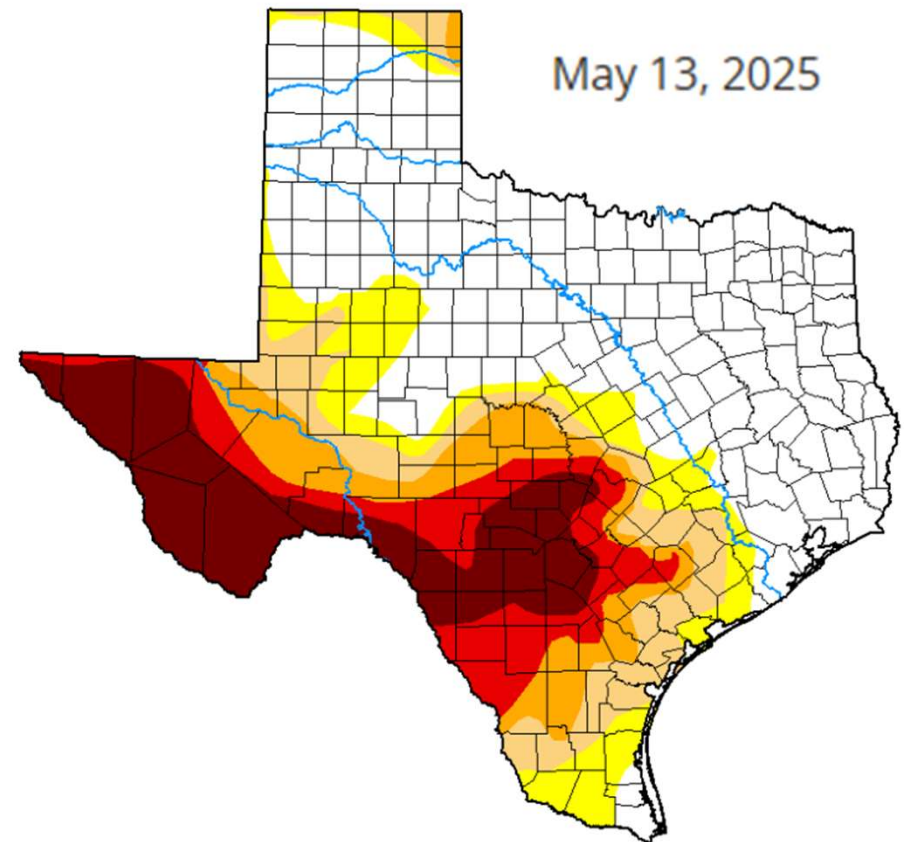
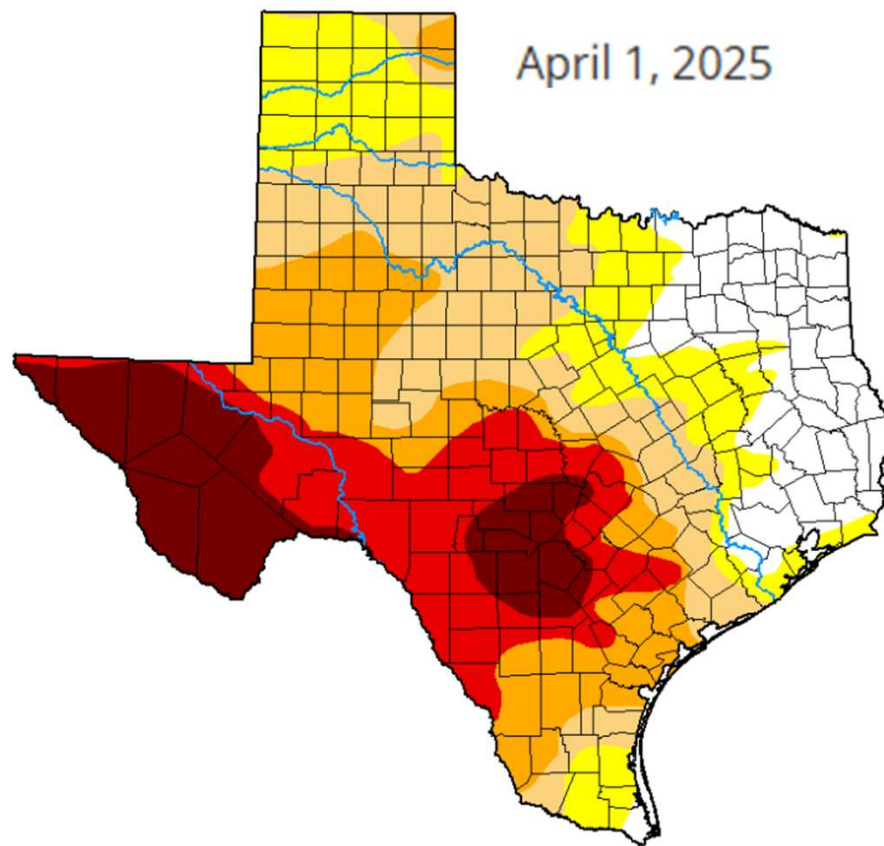
Rachel Ickert, Chief Engineering Officer

Past 30 Days (4/19/2025 - 5/19/2025)

Percent of Normal Rainfall



U.S. Drought Monitor

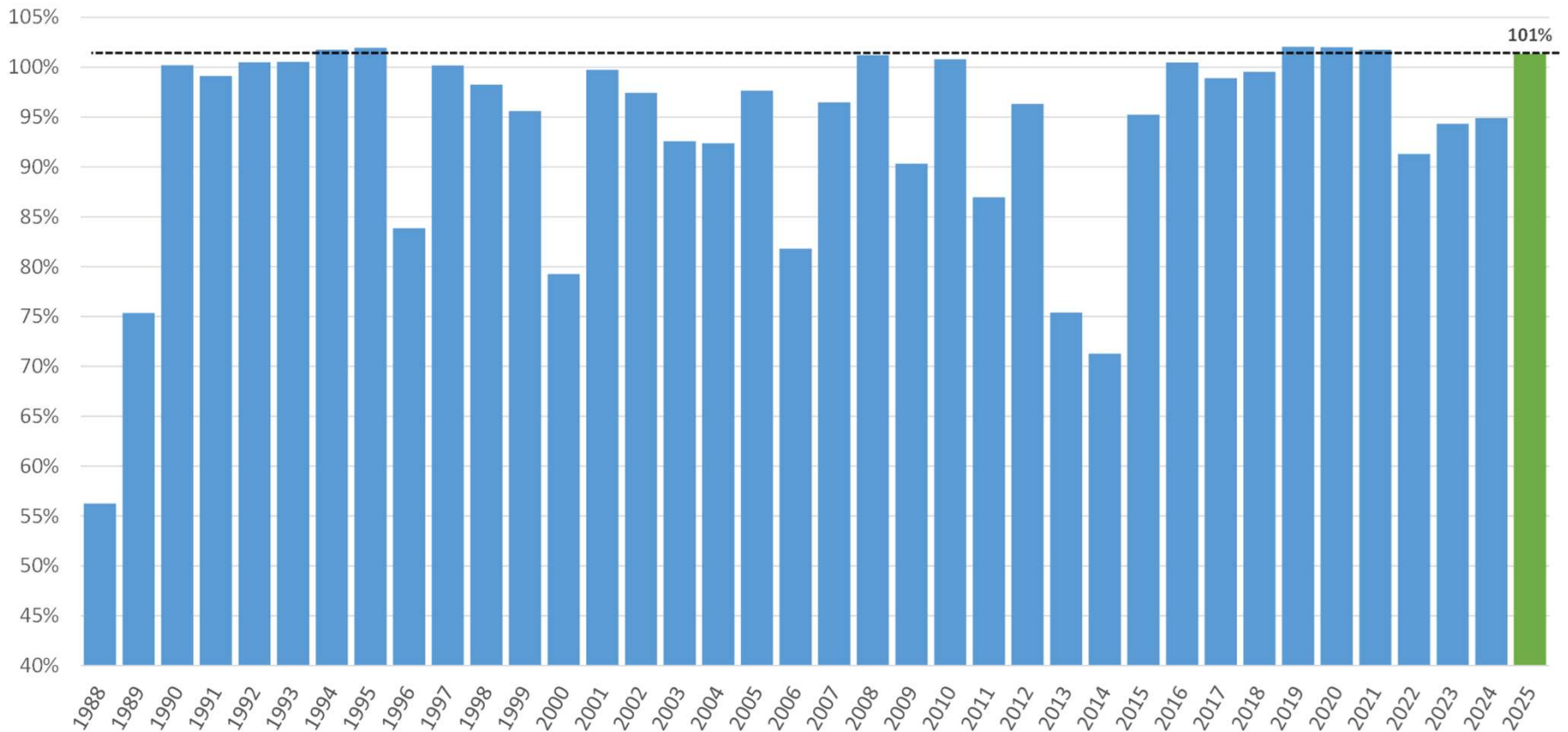


None
D0 (Abnormally Dry)
D1 (Moderate Drought)

D2 (Severe Drought)
D3 (Extreme Drought)

D4 (Exceptional Drought)
No Data

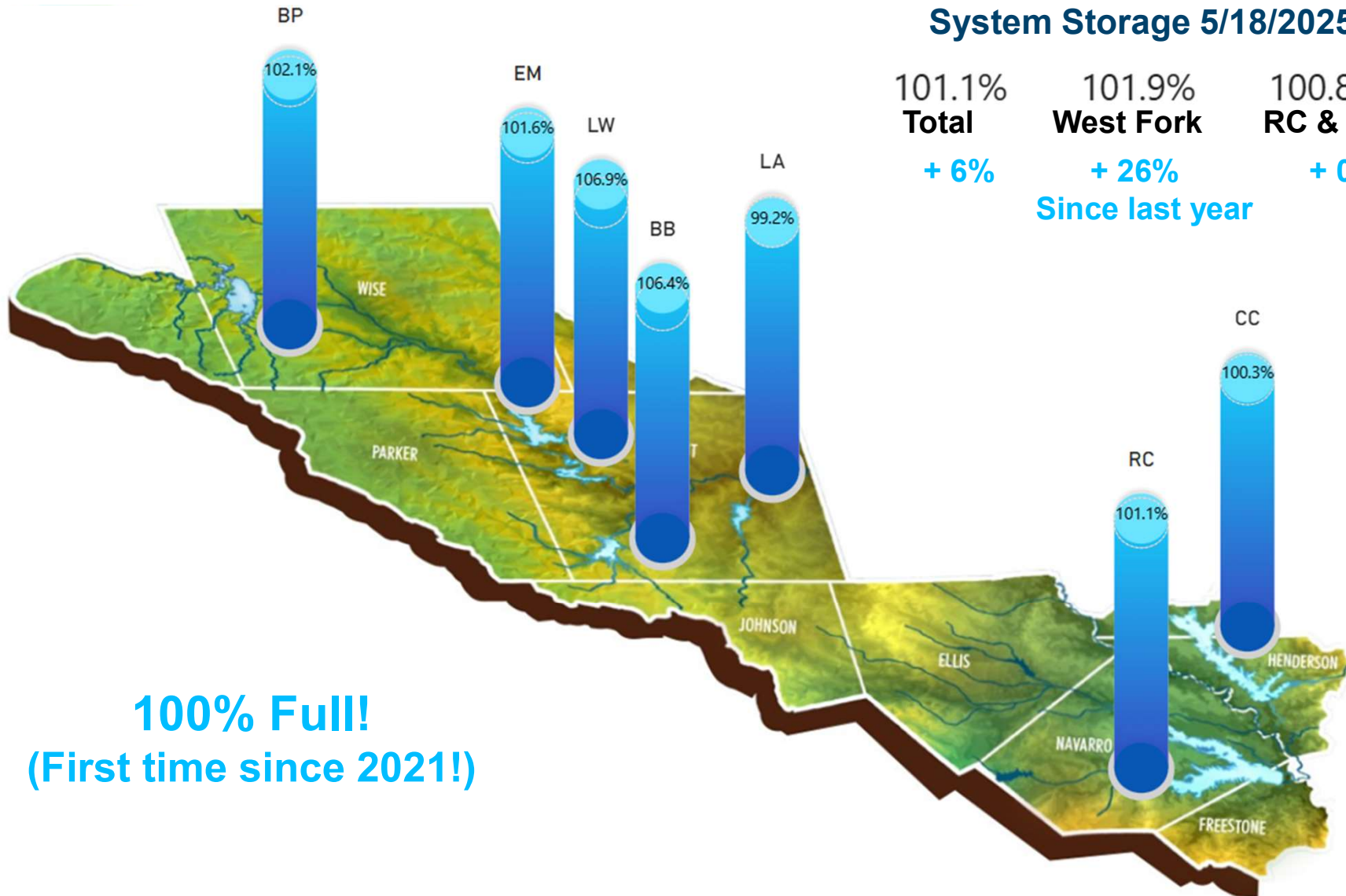
Percent of Total Storage on May 18



*1988 – All four TRWD reservoirs operational

System Storage 5/18/2025

101.1%	101.9%	100.8%
Total	West Fork	RC & CC
+ 6%	+ 26%	+ 0%
Since last year		



100% Full!
(First time since 2021!)

Flood Event Public Coordination

Lake Level Blog



# of Views	+6.7K
Most Active Day and # of Views	4/30 +700

Flood Line



# of Calls to Flood Line from 4/19 to 5/13	99
Time Spent Resolving Flood Line Calls	15 hrs

Flood Event Public Coordination

