



# WATERSHED PLANNING FOR WATER SUPPLY PROTECTION

## WATERSHEDS

Contact Information:

**Aaron Hoff**

Watershed Programs  
Manager

817-720-4447

Aaron.Hoff@trwd.com

**Katie Myers**

Rural Programs  
Coordinator

817-720-4419

Katie.Myers@trwd.com

**Michelle Wood-Ramirez**

Urban Programs  
Coordinator

817-720-4552

Michelle.Wood-Ramirez@trwd.com

The quality of a water body is controlled largely by what happens in its watershed, or drainage area. Even activities that happen far upstream can affect the amount and quality of water in a creek or lake, as well as the plants, animals, and people who depend on it. Maintaining high quality creeks, rivers, and lakes means maintaining clean and healthy watersheds.

Creeks and lakes in the north central Texas area are challenged by the effects of historic farming and ranching activities and land use changes. Growing urban and suburban populations lead

to an increase stormwater runoff and wastewater flows into streams and lakes. Regional populations are expected to grow significantly over the next 50 years, further increasing stresses on watersheds and drinking water supplies.

Tarrant Regional Water District (TRWD) is leading the effort to protect water supplies and water quality in the watersheds above its major water supply reservoirs. The District is using a collaborative approach to watershed issues by facilitating the development and implementation of Watershed Protection Plans.



## PLANNING FOR WATERSHED PROTECTION

Watershed planning is a voluntary process that aims to restore and protect water resources by identifying and mitigating controllable sources of pollutants and stresses in the watershed. During this process, a diverse set of stakeholders, such as landowners, residents, elected officials, and agency representatives, work together to develop a comprehensive plan to reduce pollutants in local water bodies. Participation in the

process and resulting watershed plan are voluntary.

These efforts are being carried out through planning meetings and implementation projects. Input from stakeholders is critical to development of sustainable plans, continued implementation, and re-evaluation in future years. Please consider joining the effort to protect these valuable water resources.



Scan for more information.



# WATERSHEDS AND WATER QUALITY

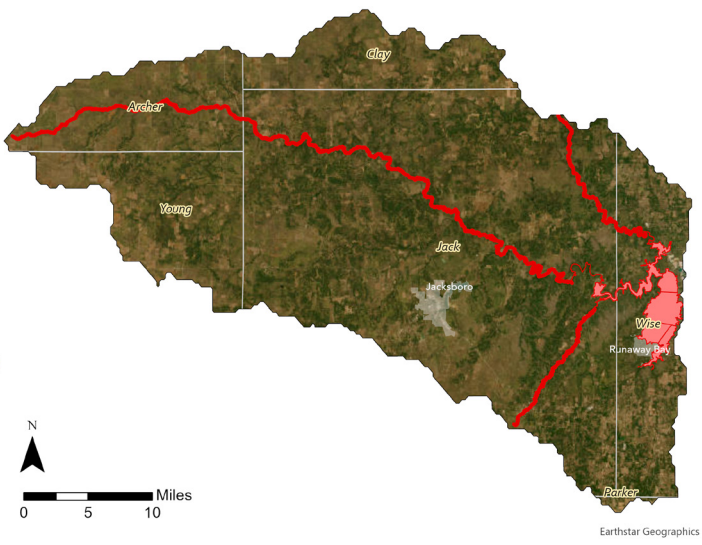
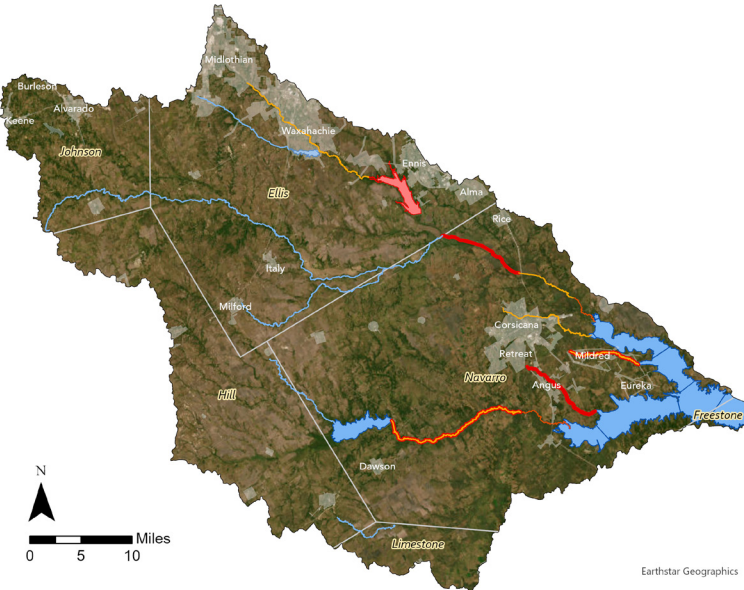
The Texas Commission on Environmental Quality (TCEQ) has identified several water quality issues in local creeks and lakes, including bacteria and elevated nutrients such as nitrogen and phosphorus, algae that consume these nutrients, and low dissolved oxygen - a result of too much algae growth. These factors are an indication of potential stresses on the watershed and threats to local creeks, lakes,

and regional drinking water supplies.

Visit [www.trwd.com/watersheds](http://www.trwd.com/watersheds) or scan the QR code on the front to learn more about our work in the watersheds that feed each of TRWD's major water supply reservoirs (shown below). Sign up for our newsletter at [eepurl.com/dG7s2j](http://eepurl.com/dG7s2j) to receive meeting invitations and other important watershed news.

## Richland-Chambers

## Bridgeport



**TCEQ Water Quality Status**

**Streams**

- Fully Supporting (Blue line)
- Concern (Yellow line)
- Impaired (Red line)

**Reservoir**

- Fully Supporting (Blue fill)
- Concern (Yellow fill)
- Impaired (Red fill)

Source: TCEQ 2022 Integrated Report

## Eagle Mountain

## Cedar Creek

