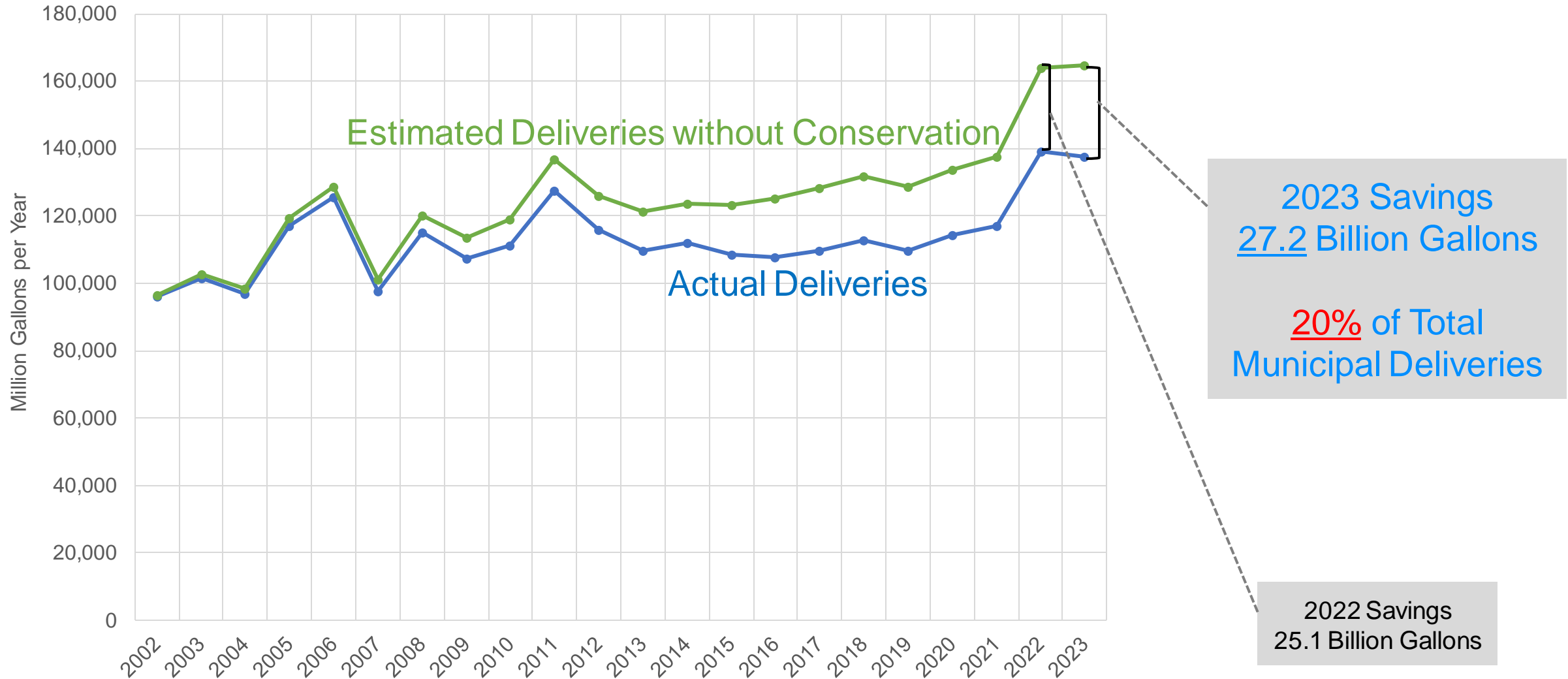


Staff Update

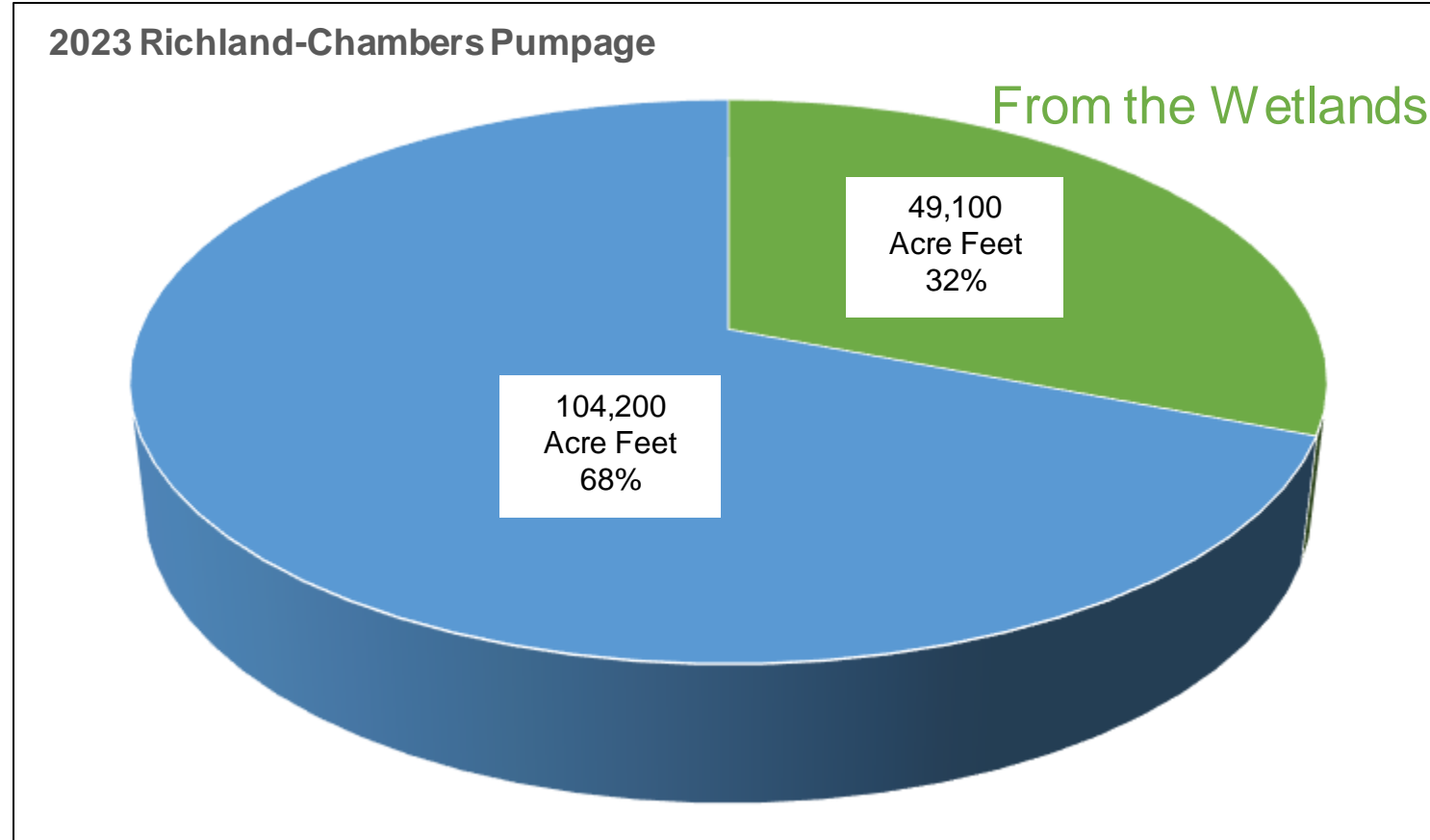
Water Resources Update

Rachel Ickert, *Chief Water Resources Officer*

Municipal Conservation Savings



2023 Reclaimed Water Volume



- 2023 reclaimed water was more than 10% of 2023 total demands

Interesting Facts

- 2023 Conservation plus Reclaimed Water was about **30% of total water deliveries** to TRWD customers.
- Fort Worth, Arlington, and Mansfield are in the top five NCTCOG cities for population growth in 2023.
- 2022 and 2023 were in the top 4 driest years in Texas since 2000.
- 2022 and then 2023 set new records for total TRWD customer water use. The previous record was set in 2011.
- In the last 2 years, we have pumped almost **the same volume of water** from Richland-Chambers and Cedar Creek to Eagle Mountain **that is in the lake now**.
- We estimate that **Bridgeport and Eagle Mountain would both be 11 feet lower** if we had not been pumping from Richland-Chambers and Cedar Creek to Eagle Mountain the last two years.

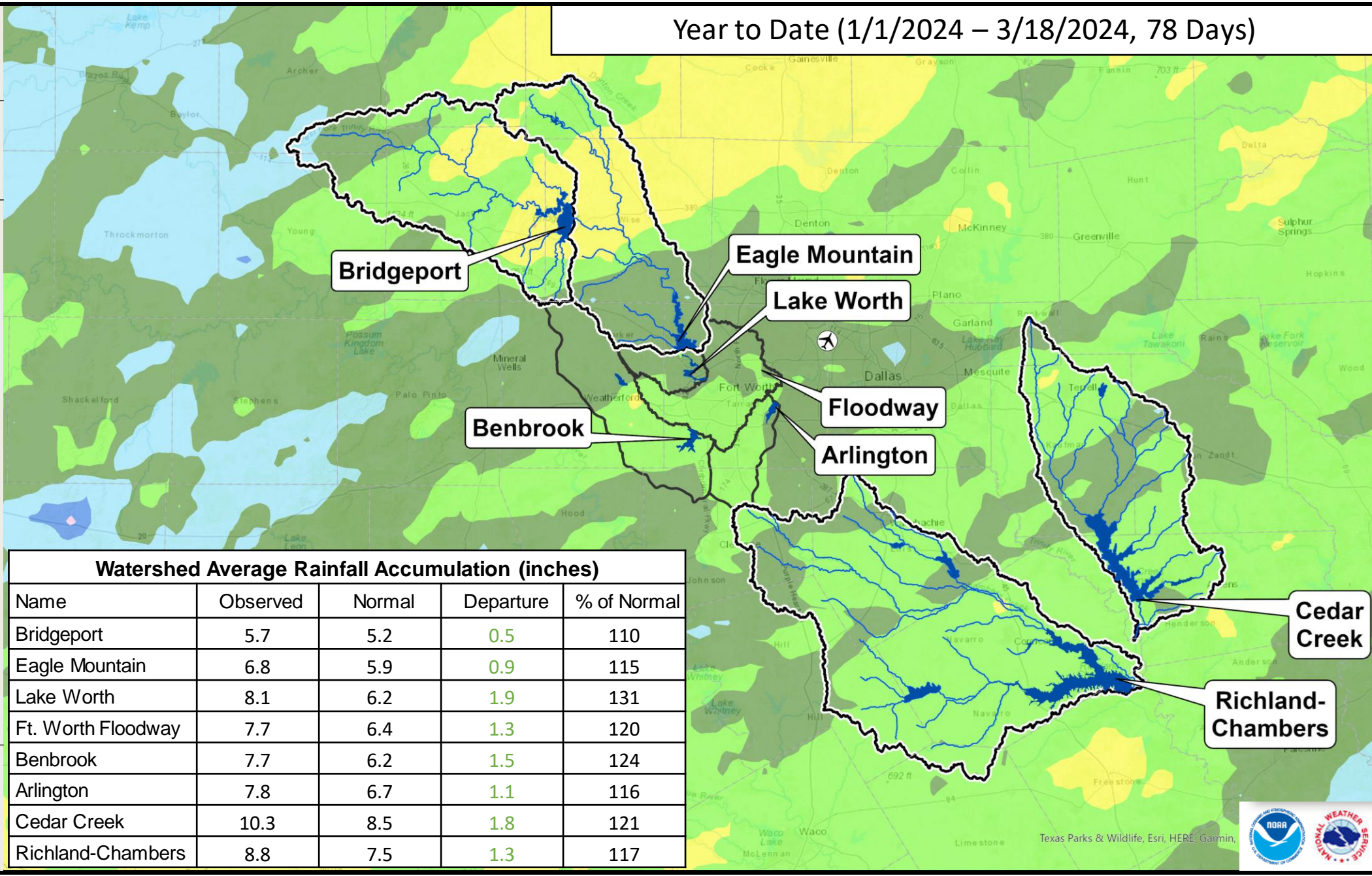
Percent of Normal Rainfall



LEGEND

- 0 - 50 %
- 50 - 75 %
- 75 - 100 %
- 100 - 125 %
- 125 - 150 %
- 150 - 175 %
- 175 - 200 %
- 200 - 225 %
- 225 - 250 %
- > 250%

Year to Date (1/1/2024 – 3/18/2024, 78 Days)



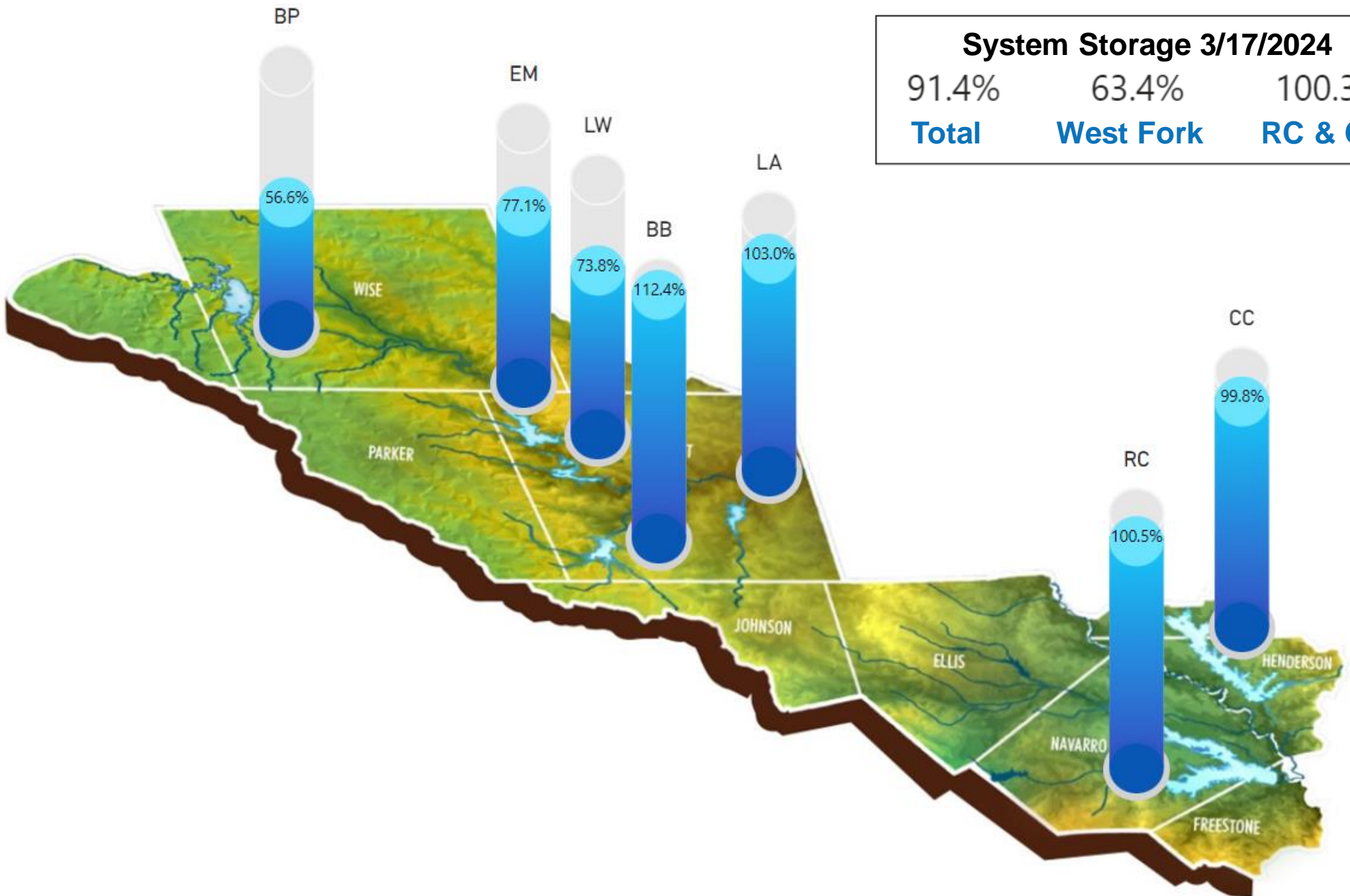
Watershed Average Rainfall Accumulation (inches)				
Name	Observed	Normal	Departure	% of Normal
Bridgeport	5.7	5.2	0.5	110
Eagle Mountain	6.8	5.9	0.9	115
Lake Worth	8.1	6.2	1.9	131
Ft. Worth Floodway	7.7	6.4	1.3	120
Benbrook	7.7	6.2	1.5	124
Arlington	7.8	6.7	1.1	116
Cedar Creek	10.3	8.5	1.8	121
Richland-Chambers	8.8	7.5	1.3	117

Precipitation totals are obtained from NOAA's NWS. The totals displayed are estimated by the WGRFC. The data is processed and displayed using ESRI ArcGIS.

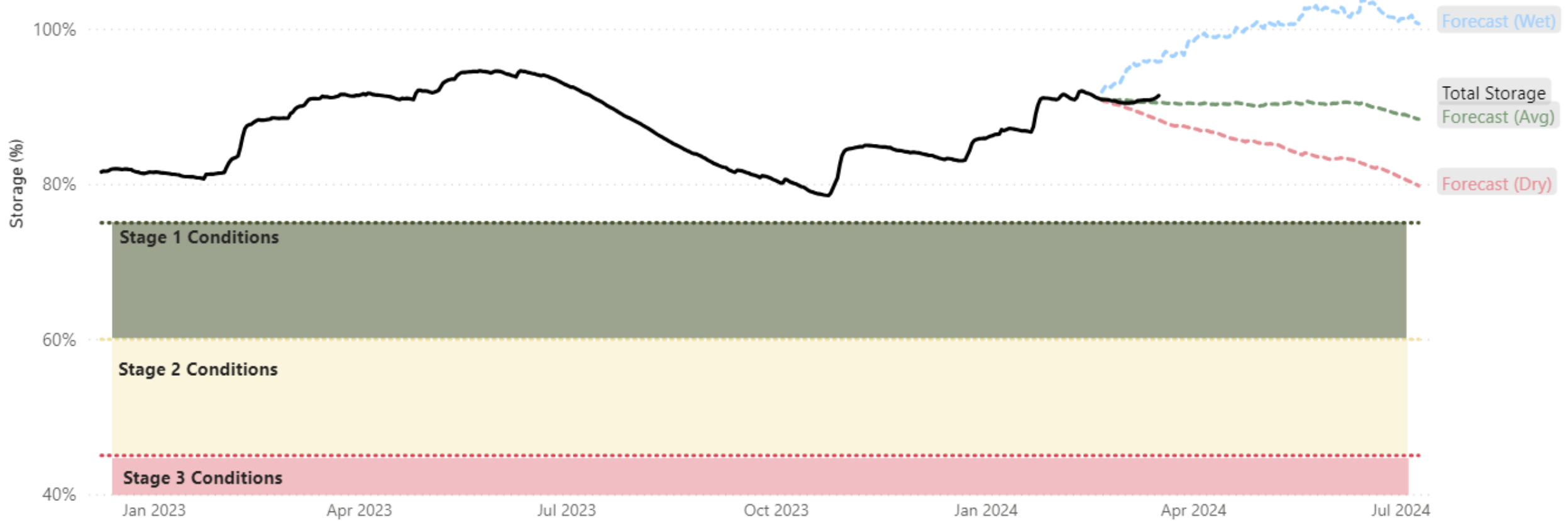


Texas Parks & Wildlife, Esri, HERE, Garmin

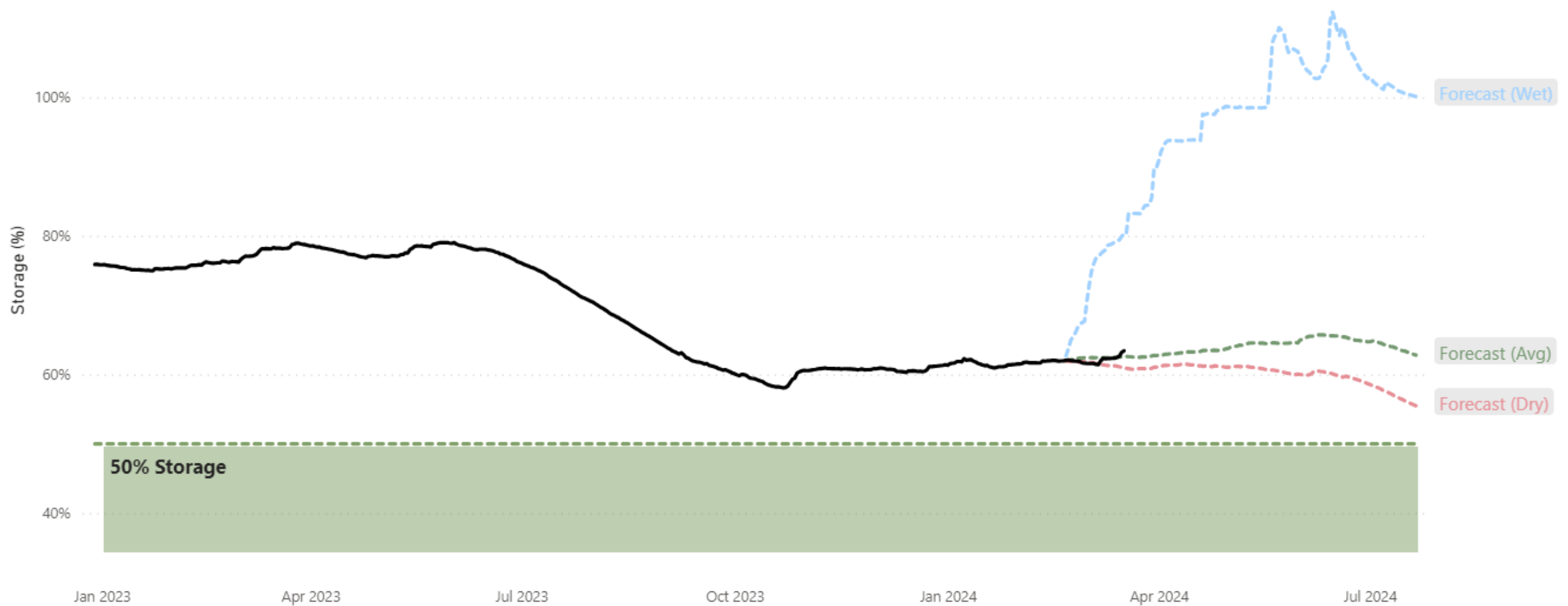
System Storage 3/17/2024		
91.4%	63.4%	100.3%
Total	West Fork	RC & CC



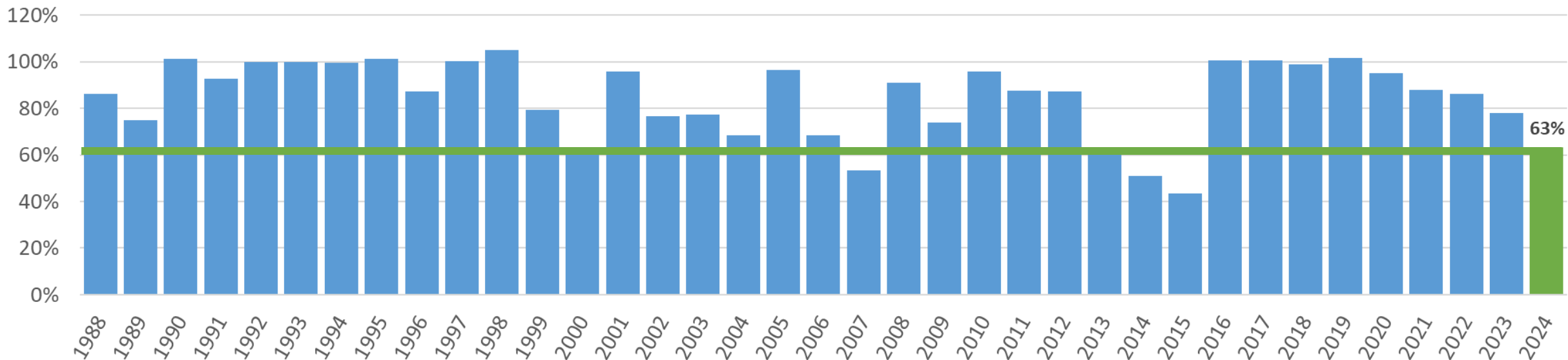
Historic and Projected Total Water Supply Storage



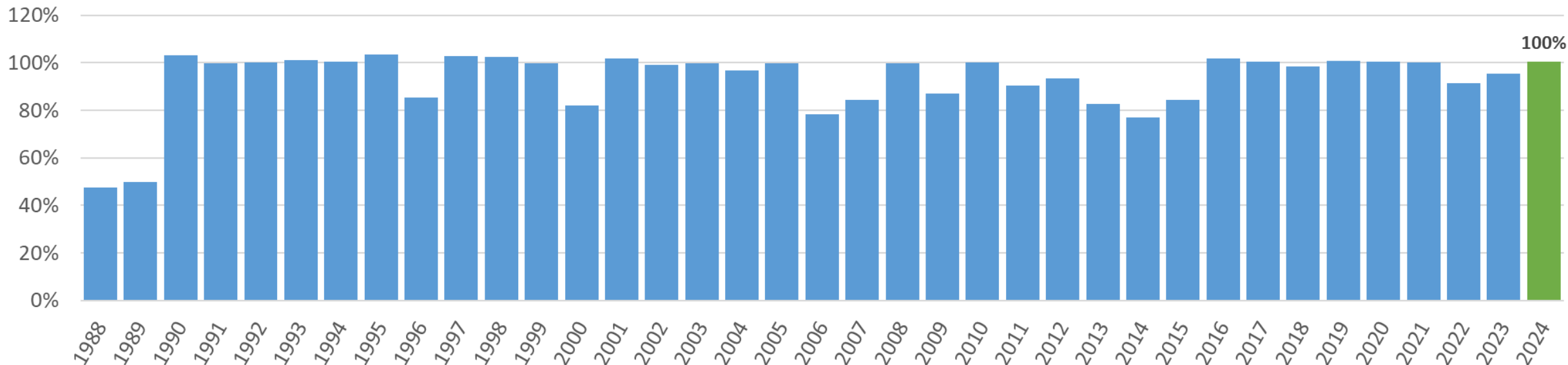
Historic and Projected Bridgeport + Eagle Mountain Water Supply Storage



Percent of BP+EM Storage on March 17



Percent of CC+RC Storage on March 17



Lake Level Projections – March 2024

March 1, 2024

The latest lake level projections are shown below. You will also find:

- Links to historical lake level plots
- Last month's projections compared to what actually happened

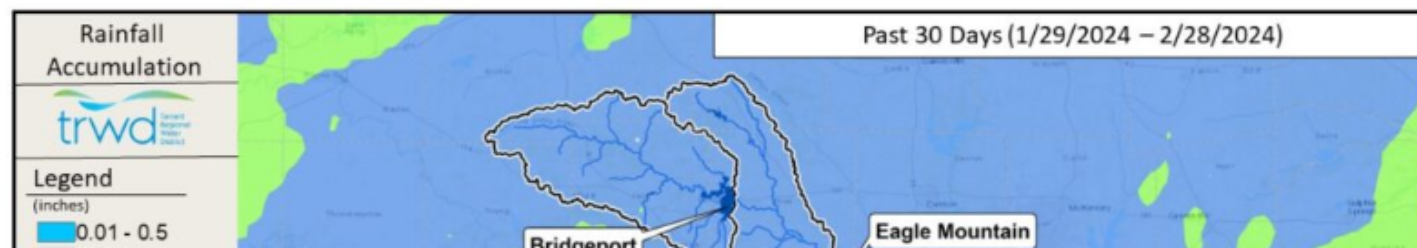
Even though February was dry, the rainfall received in the TRWD watersheds in the past few months have helped maintain the system storage at a high level. Going forward, March is expected to be at or above normal precipitation. TRWD's Meteorologist, Courtney Jalbert, provides discussion on what we can expect in terms of rainfall adding water to the lakes in the "From our Meteorologist" section.

Thank you for following the Lake Level Blog and check back next month about this time for more projections.

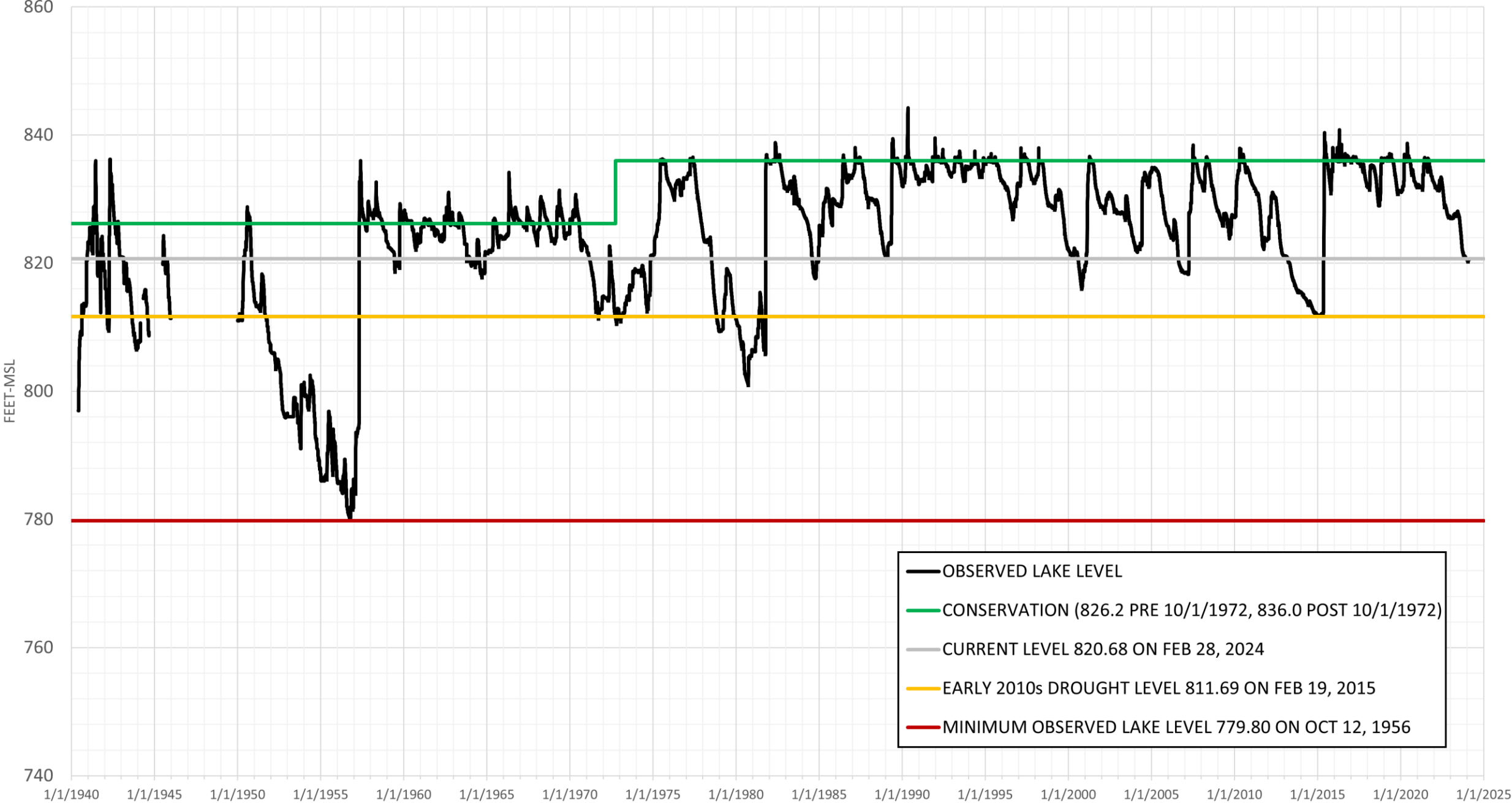
From our Meteorologist

February Summary...

February 2024 has been much warmer and drier than previous years. Temperatures have been 6 to 8 degrees above normal and precipitation has been sparse with totals only reaching around 1.88" at DFW airport, which is 0.64" below normal as of February 27th. Notably, February 26th saw parts of North Texas hit high temperatures in the mid-90s. Most of the region has seen between 50 to 75% of the normal precipitation over the last 30 days ([30-Day Percent Precipitation Map](#)). See the past 30 days totals below.



LAKE BRIDGEPORT HISTORICAL LAKE LEVELS



www.trwd.com/lake-level-blog



WHO WE ARE

WHAT WE DO

BE ACTIVE

WORK WITH US

Category

Lake Level Blog

Get our Lake Level updates straight to your email by subscribing below.

Name*

Email*

Subscribe

Lake Level Blog Categories

[Change in Reservoir Discharge](#)

[Reservoir Monitoring Update](#)

[Lake Level Projections](#)