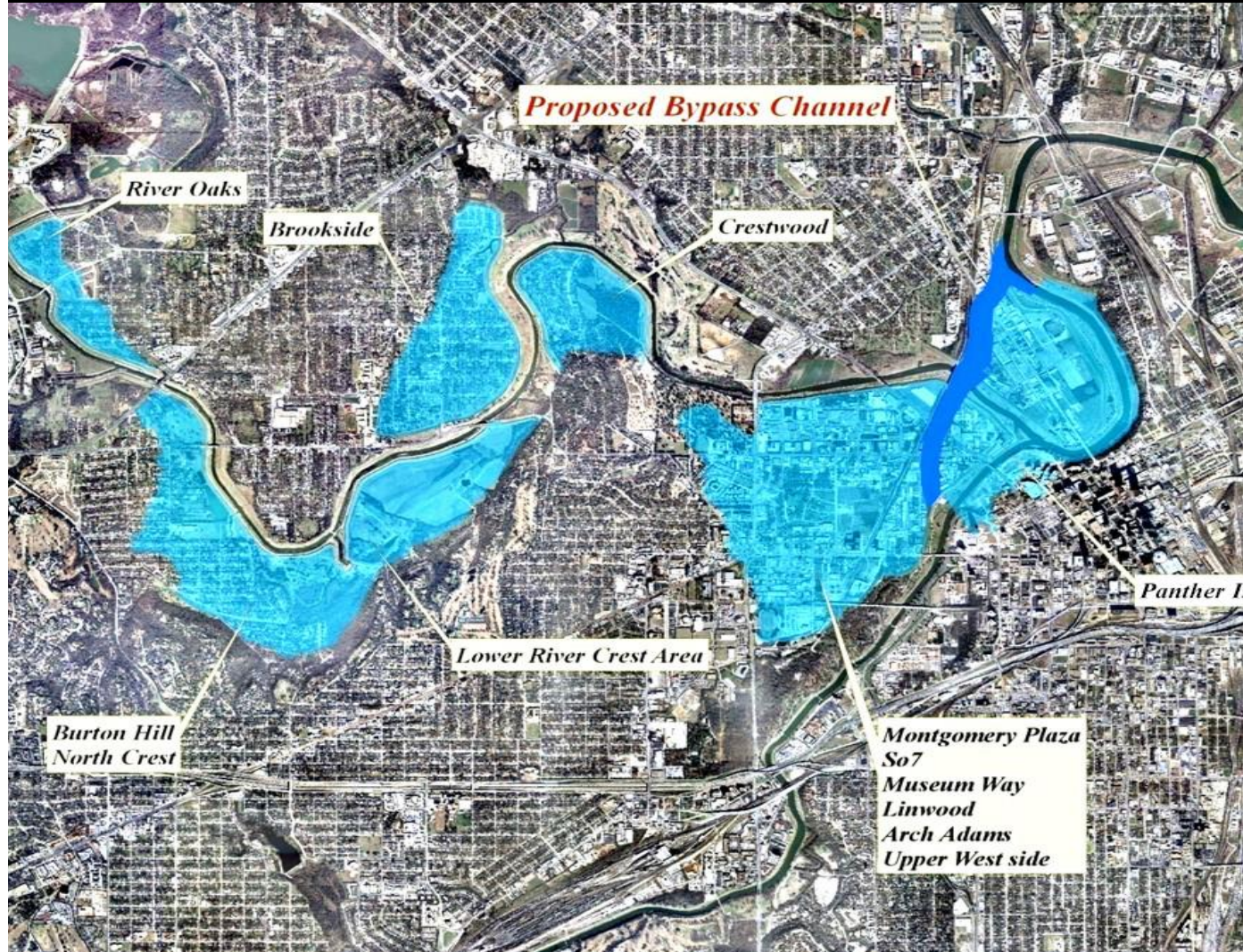


Panther Island / Central City Flood Control Project

A MODEL PUBLIC-PRIVATE PARTNERSHIP

**Panther Island
-
Central City
Project
Overview**



Panther Island / Central City Flood Control Project

FULLY INTEGRATED FEDERAL, STATE, AND LOCAL VISION

Two separate PUBLIC/PRIVATE efforts create the “Vision” Central City – VERSUS – Panther Island

FEDERAL MATCH
“CENTRAL CITY PROJECT”

- 1) USACE Modified Central City Flood Control Project –
 - PUBLIC - U.S. Army Corps of Engineers
 - PUBLIC - Tarrant Regional Water District (Local Sponsor for USACE)
 - PRIVATE – Developers finance majority of local share

- 2) TxDOT Bridges Project –
 - PUBLIC - TxDOT
 - PUBLIC - City of Fort Worth (Local Sponsor for TxDOT)
 - PRIVATE - Developers finance majority of local share

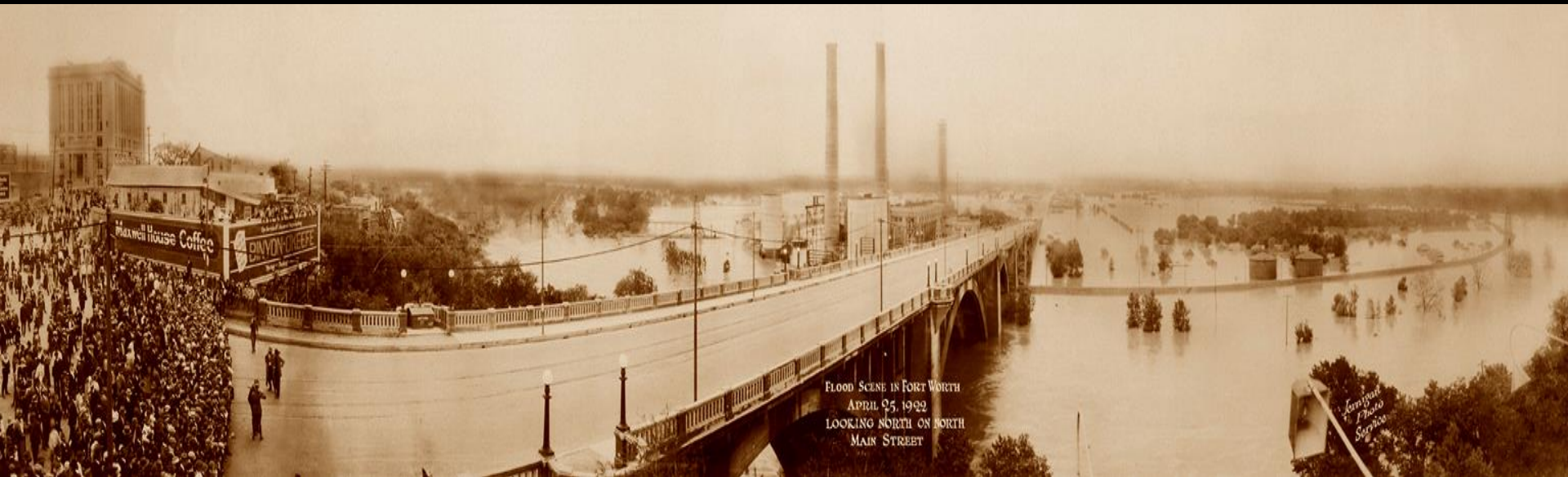
ONLY LOCAL
“PANTHER ISLAND”

- 1) Local Projects (CFW infrastructure, canals and park amenities) –
 - PUBLIC - City of Fort Worth
 - PUBLIC - Tarrant Regional Water District
 - PRIVATE – Developer financed

- 2) Panther Island Initiatives (Event programming for branding) –
 - PRIVATE - All financed through sponsorships, ticket & concession sales

Panther Island / Central City Flood Control Project

CONCERN: CENTRAL CITY FLOODING

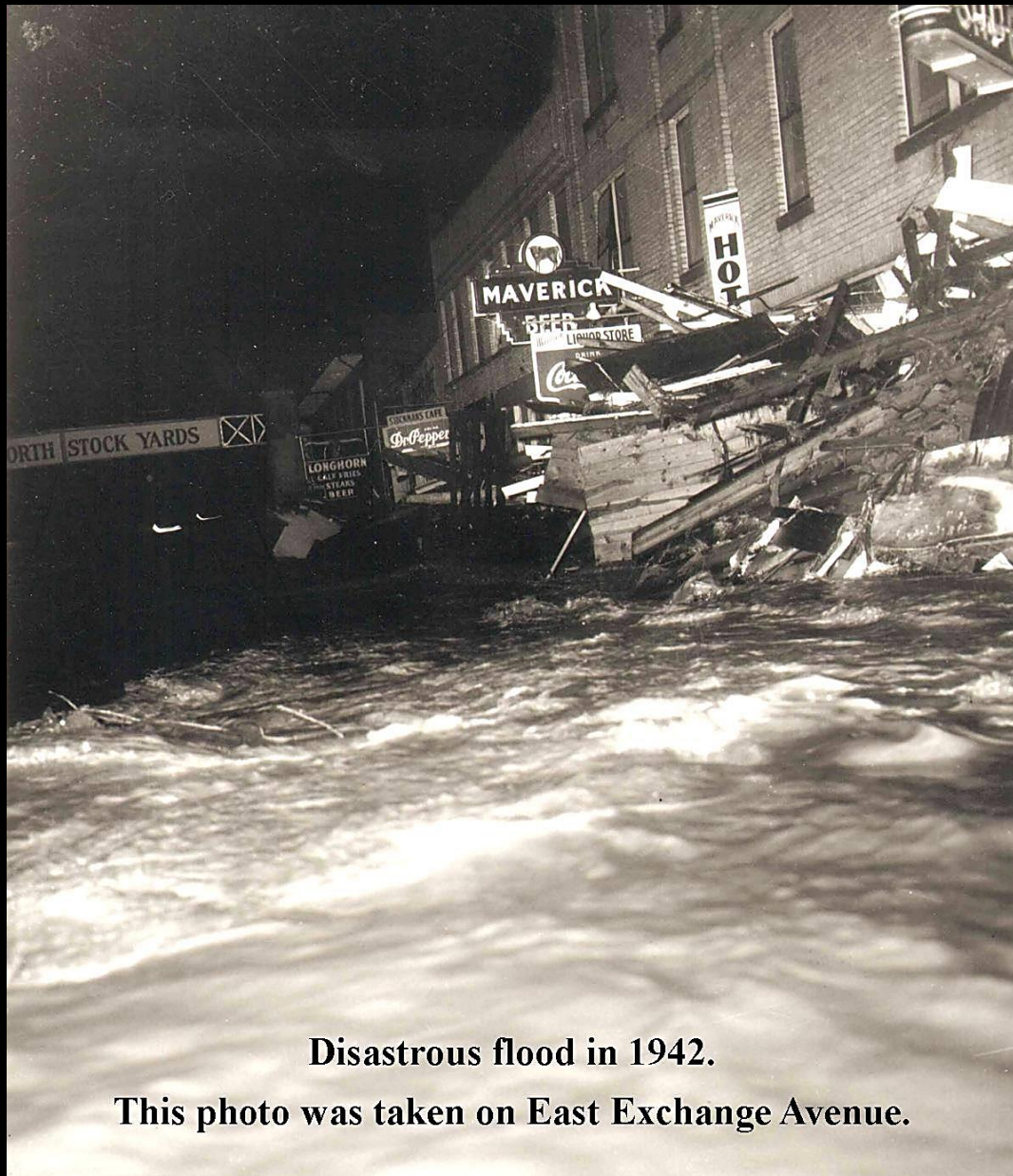


FLOOD SCENE IN FORT WORTH
APRIL 25, 1922
LOOKING NORTH ON NORTH
MAIN STREET

1922

Panther Island / Central City Flood Control Project

CONCERN: CENTRAL CITY FLOODING



Disastrous flood in 1942.
This photo was taken on East Exchange Avenue.

1942

Panther Island / Central City Flood Control Project

CONCERN: CENTRAL CITY FLOODING



1949

Panther Island / Central City Flood Control Project

CONCERN: CENTRAL CITY FLOODING



June 14, 1989

Panther Island / Central City Flood Control Project

CONCERN: CENTRAL CITY FLOODING



*1949 Flood brings U.S. Army Corps
of Engineers to Fort Worth, Texas*

Panther Island / Central City Flood Control Project

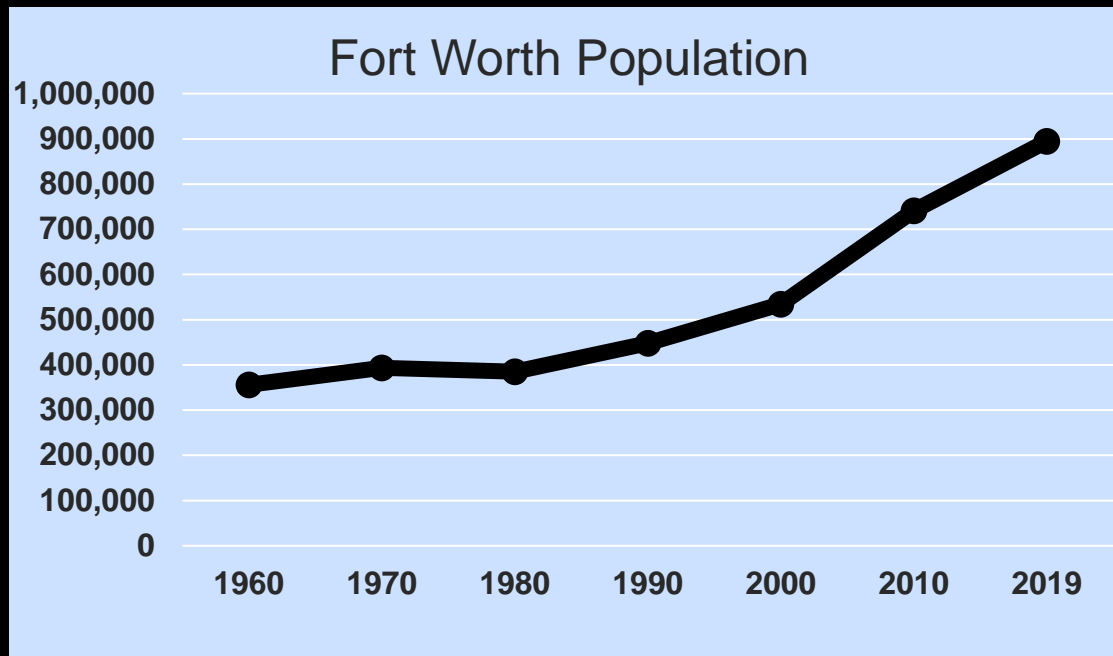
RESULT: 1960's SOLUTION

Fort Worth's Current
Levee System



Panther Island / Central City Flood Control Project

CONCERN: EXPLOSIVE SUBURBAN GROWTH

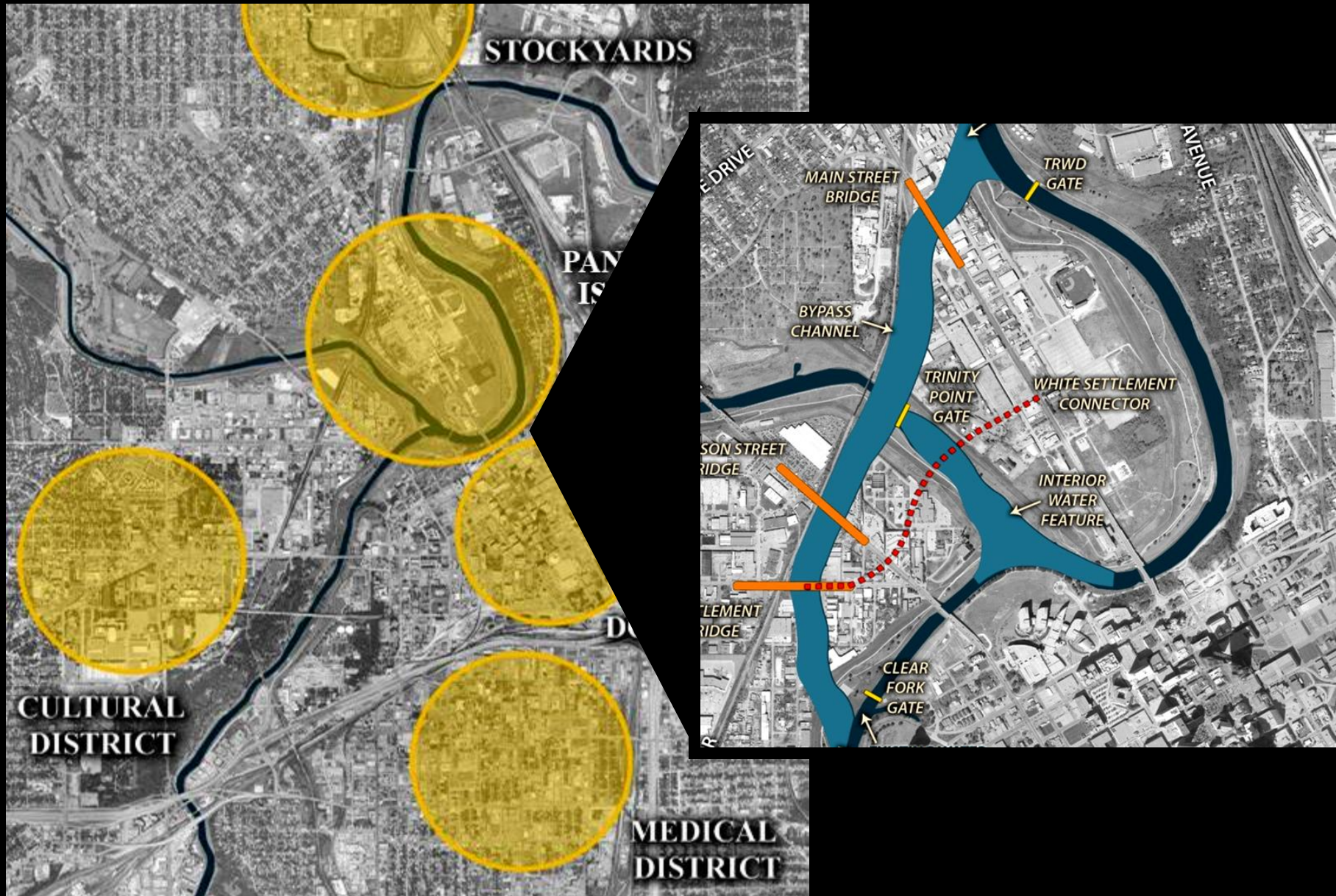


**US Army Corps
of Engineers.**

- Levee project of 1957 designed for 1960 population of 350,000
- Growth in Tarrant, Parker and Wise counties contributing to drainage problems
- Impervious developments contributing to drainage problems
- 2003: 86% of Fort Worth's levees no longer adequate
(USACE Central City Interim Feasibility Study)
- **Fort Worth is now over 920,000 people! 12th Largest in U.S.**

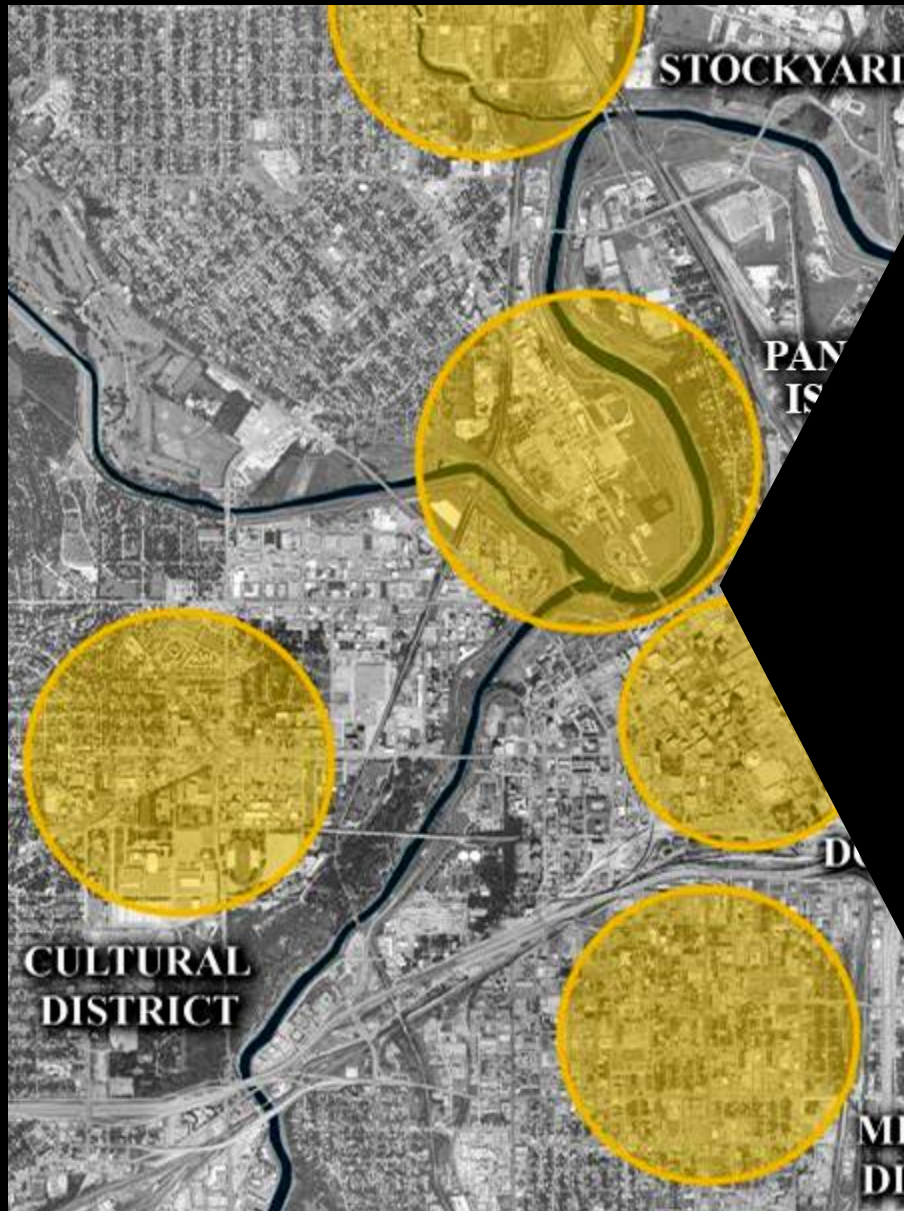
Panther Island / Central City Flood Control Project

SOLUTION: MODIFIED CENTRAL CITY PROJECT

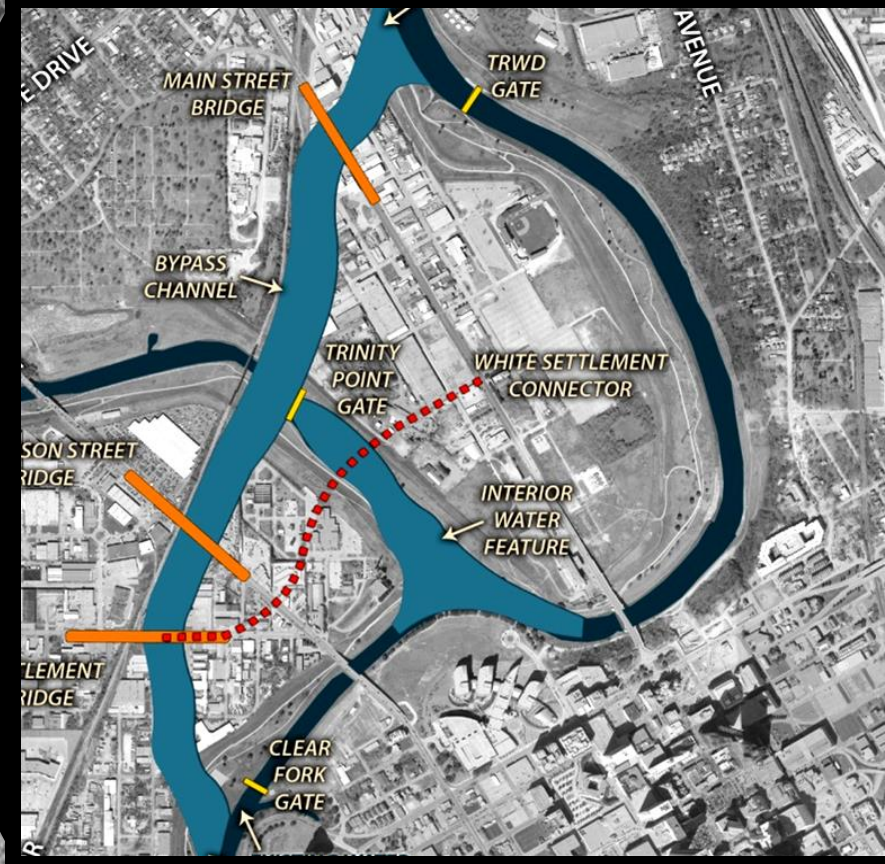


Panther Island / Central City Flood Control Project

SOLUTION: MODIFIED CENTRAL CITY PROJECT



USACE - CENTRAL CITY TXDOT BRIDGES



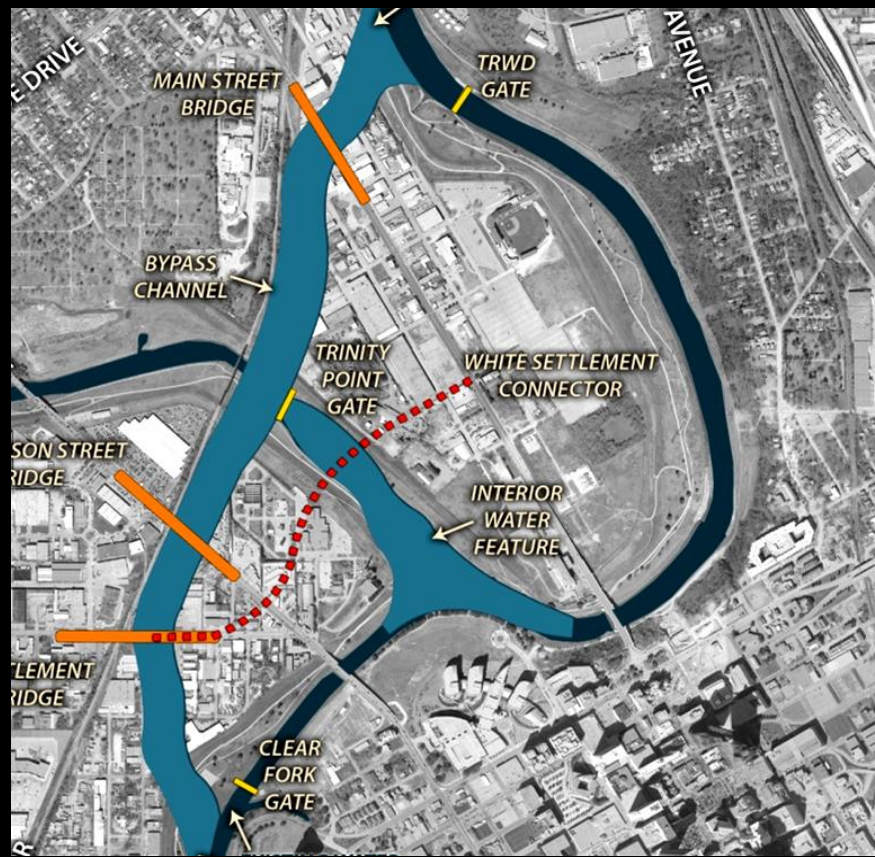
Fully Authorized Modified Central City Project

Panther Island / Central City Flood Control Project

THE FULLY INTEGRATED FEDERAL, STATE AND LOCAL PLAN

PANTHER ISLAND

USACE - CENTRAL CITY TXDOT BRIDGES



Fully Integrated Federal, State
and Local Plan

Fully Authorized Modified
Central City Project

Panther Island / Central City Flood Control Project

MODIFIED CENTRAL CITY PROJECT FOOTPRINT



Looking south over Main Street toward downtown

Panther Island / Central City Flood Control Project

HOW THE FULLY INTEGRATED PLAN WILL BE BUILT

Integrated Project Sequencing

Storm Water Management

Bridges

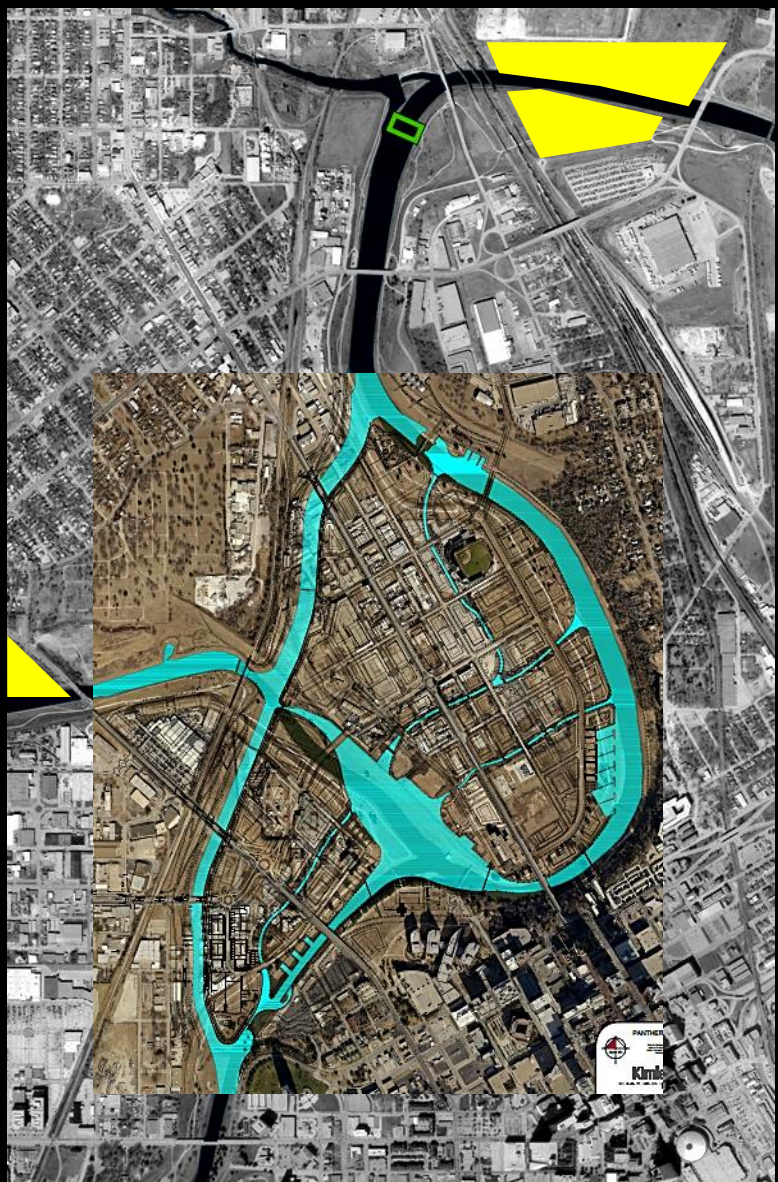
Bypass Channel

Isolation Gates

Dam & Channel Lock

Interior Water Feature

Panther Island



Panther Island / Central City Flood Control Project

FULLY INTEGRATED FEDERAL, STATE, AND LOCAL VISION

Two separate PUBLIC/PRIVATE efforts create the “Vision” Central City – VERSUS – Panther Island

FEDERAL MATCH
“CENTRAL CITY PROJECT”

- 1) USACE Modified Central City Flood Control Project –
 - PUBLIC - U.S. Army Corps of Engineers
 - PUBLIC - Tarrant Regional Water District (Local Sponsor for USACE)
 - PRIVATE – Developers finance majority of local share
- 2) TxDOT Bridges Project –
 - PUBLIC - TxDOT
 - PUBLIC - City of Fort Worth (Local Sponsor for TxDOT)
 - PRIVATE - Developers finance majority of local share

Status Update on the “Federal Project”
where State and Federal matching
money is needed. It will happen with
our without Panther Island.

Panther Island / Central City Flood Control Project

HOW THE FULLY INTEGRATED PLAN WILL BE BUILT

Integrated Project Sequencing

Storm Water Management

Bridges

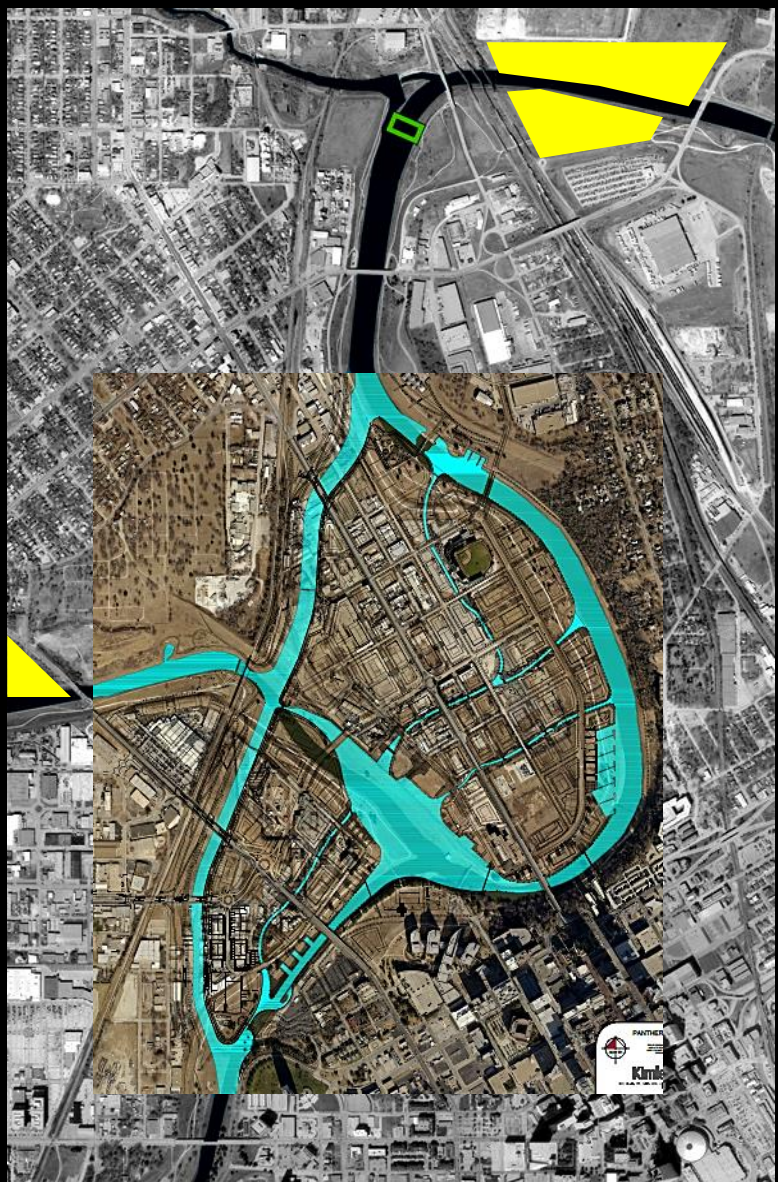
Bypass Channel

Isolation Gates

Dam & Channel Lock

Interior Water Feature

Panther Island



Panther Island / Central City Flood Control Project

STORM WATER MANAGEMENT (VALLEY STORAGE)



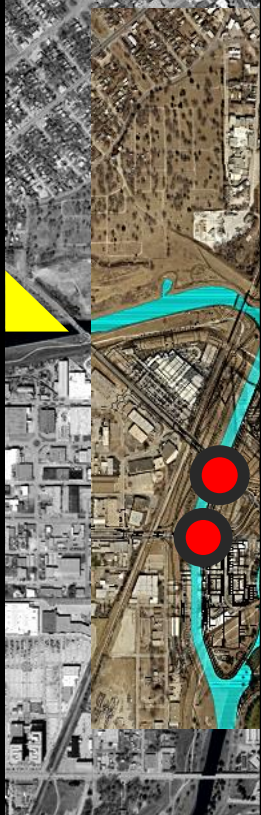
Panther Island / Central City Flood Control Project

ENVIRONMENTAL CLEANUP FOR PATH OF USACE BYPASS CHANNEL



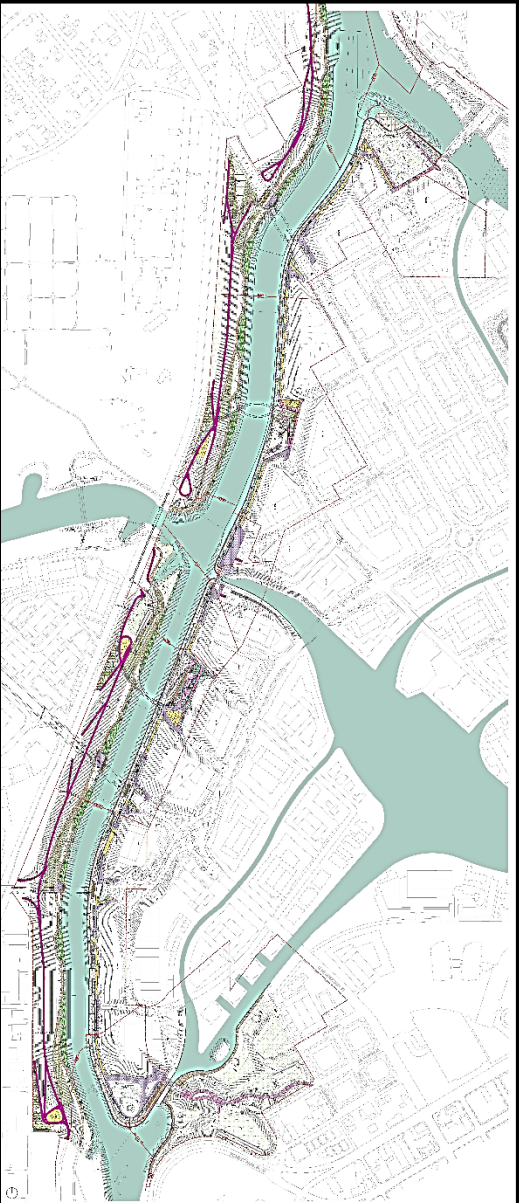
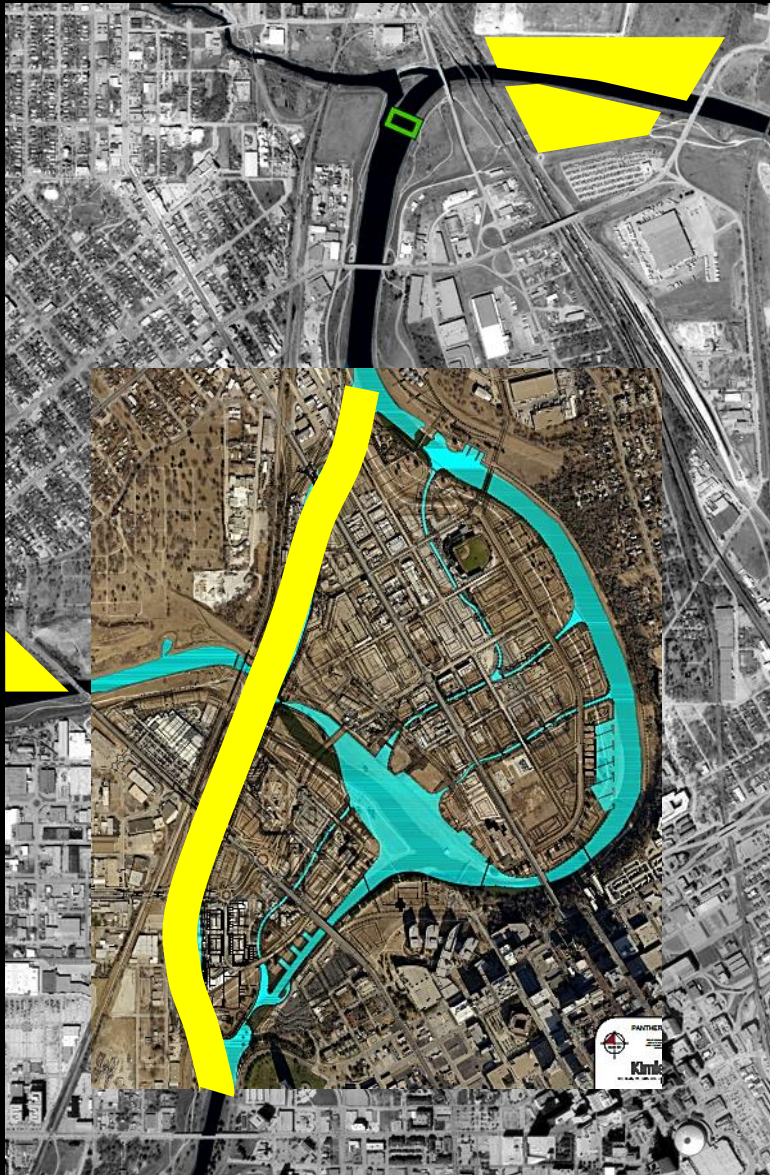
Panther Island / Central City Flood Control Project

TxDOT BRIDGES (3) CROSSING USACE BYPASS CHANNEL



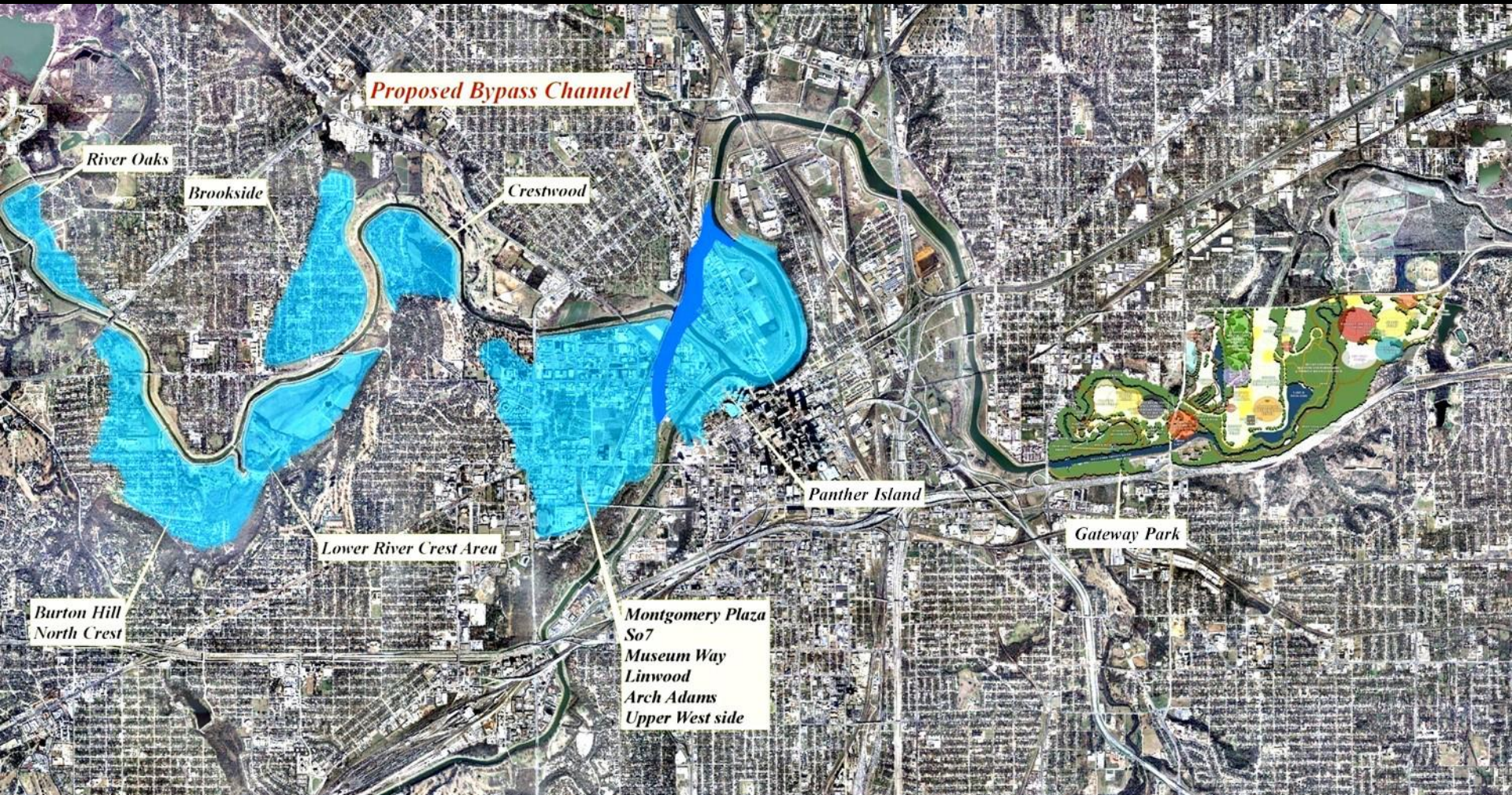
Panther Island / Central City Flood Control Project

USACE BYPASS CHANNEL



Panther Island / Central City Flood Control Project

CENTRAL CITY PROJECT MERGED WITH RIVERSIDE OXBOW



2009 Project - \$909M
(\$764M plus escalation through completion)

Panther Island / Central City Flood Control Project

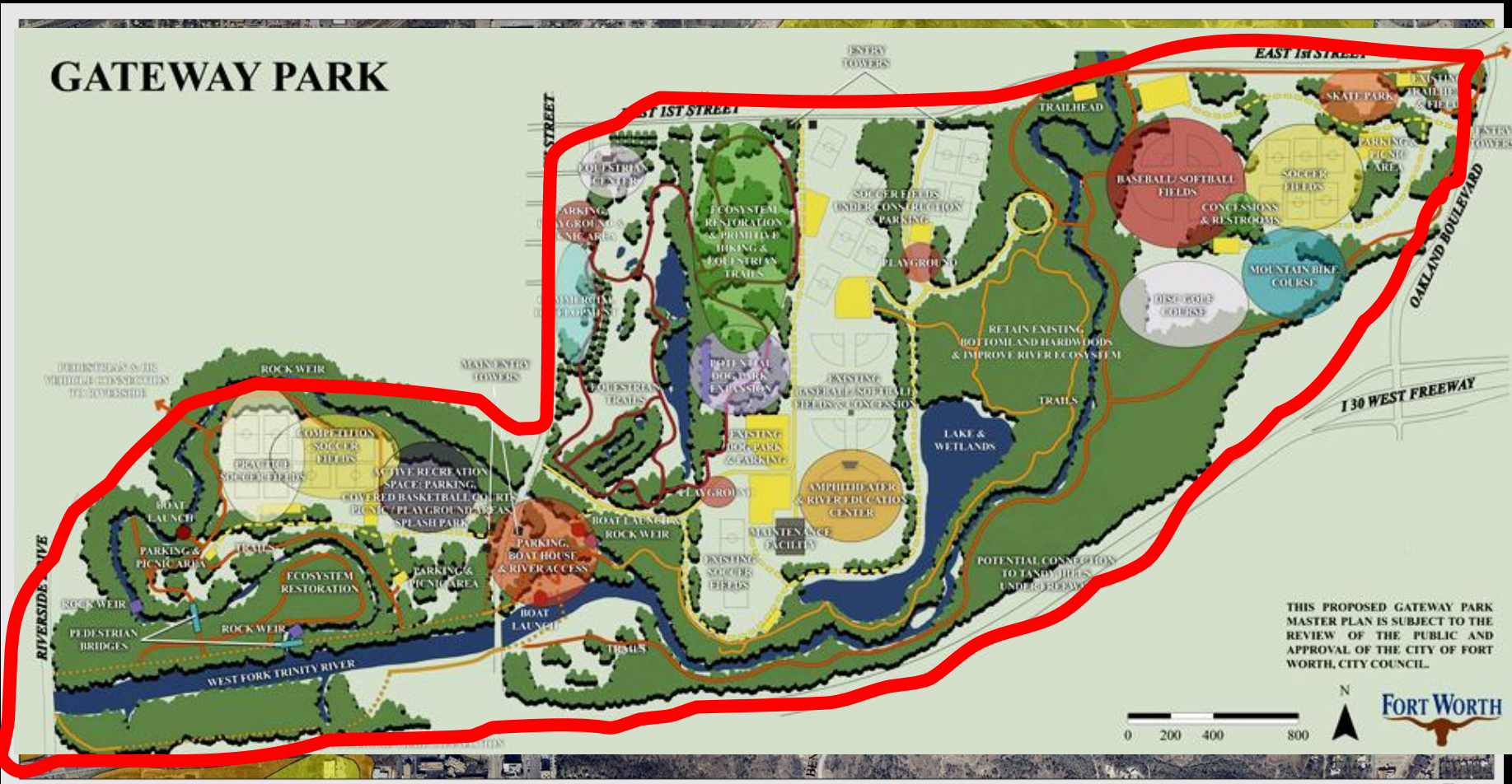
WHY USACE WAS ASKED TO STUDY INCORPORATING THE OXBOW



**Gateway Park
June 14, 1989**

Panther Island / Central City Flood Control Project

HOW THE FULLY INTEGRATED PLAN WILL BE BUILT

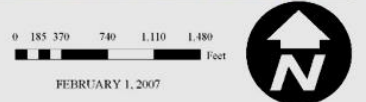


GATEWAY PARK

THIS PROPOSED GATEWAY PARK MASTER PLAN IS SUBJECT TO THE REVIEW OF THE PUBLIC AND APPROVAL OF THE CITY OF FORT WORTH, CITY COUNCIL.



GATEWAY PARK FLOODPLAIN MAP



FEBRUARY 1, 2007



Panther Island / Central City Flood Control Project

USACE COMPLETES THE MAJORITY OF THE DETENTION NEEDS



**US Army Corps
of Engineers.**

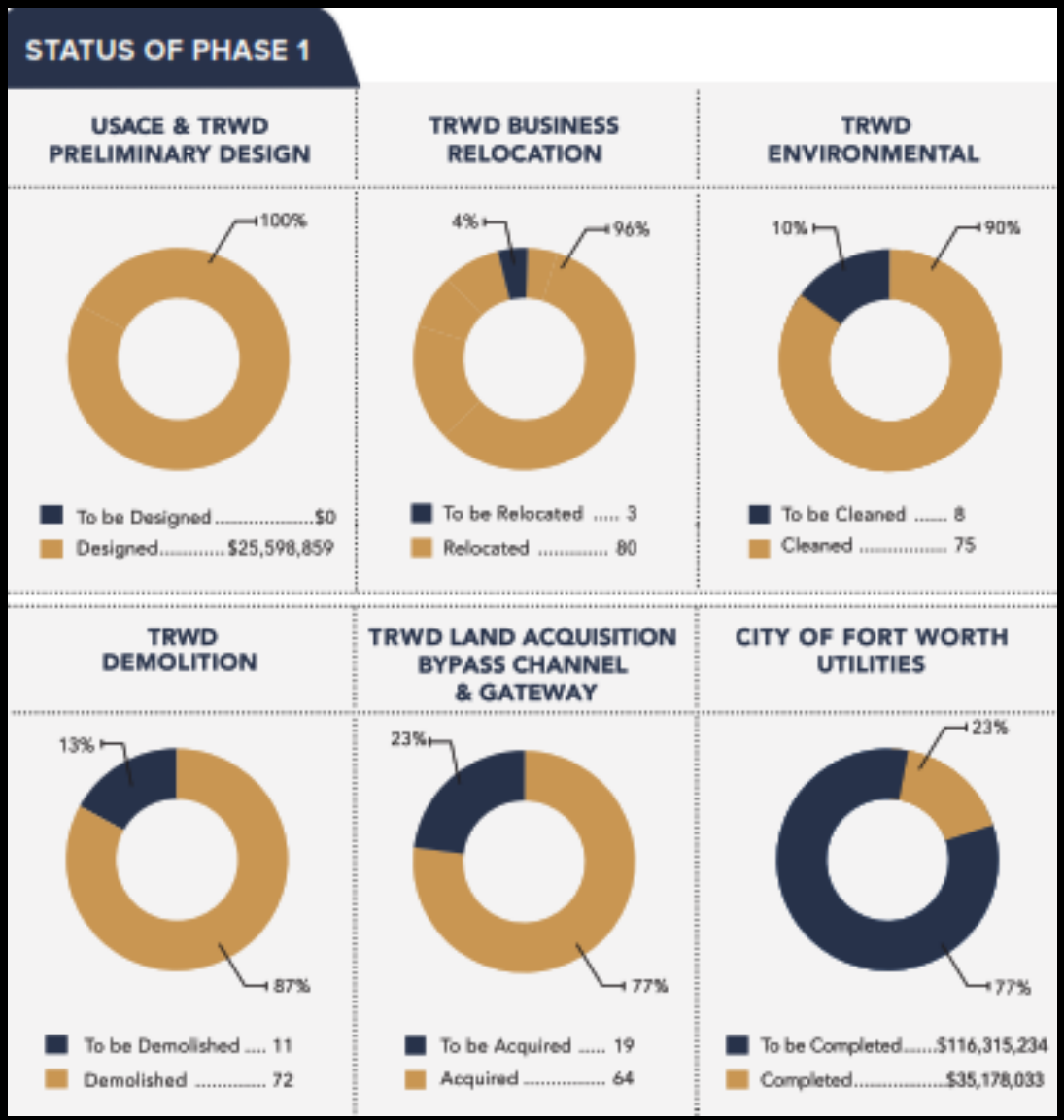
Panther Island / Central City Flood Control Project

USACE COMPLETES MAJORITY OF DETENTION NEEDS – ONLY 3 LEFT



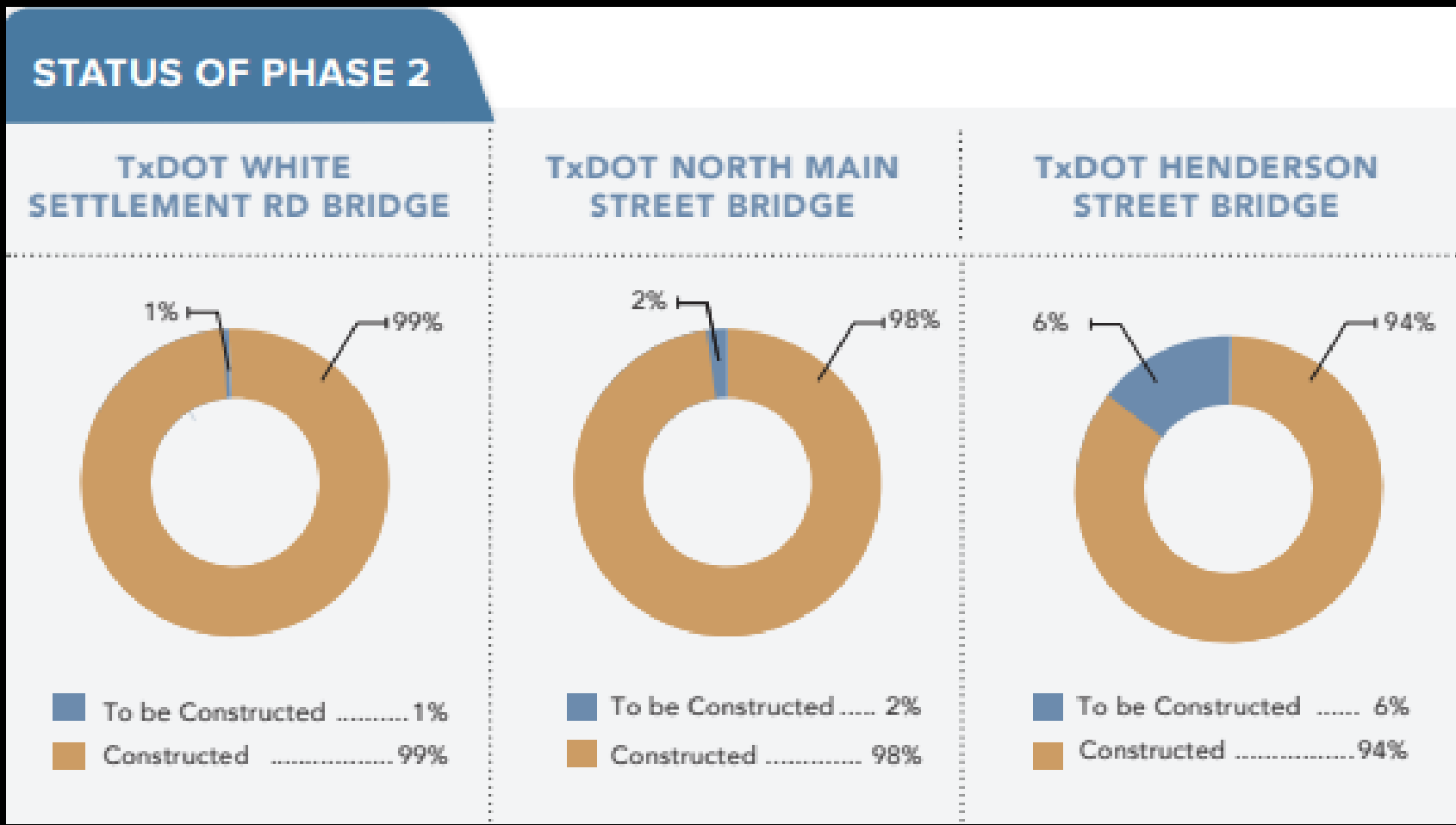
Panther Island / Central City Flood Control Project

FLOOD PROJECT PROGRESS: About to enter Phase 3 – USACE Channel



Panther Island / Central City Flood Control Project

FLOOD PROJECT PROGRESS: About to enter Phase 3 – USACE Channel



Panther Island / Central City Flood Control Project

FULLY INTEGRATED FEDERAL, STATE, AND LOCAL VISION

Two separate PUBLIC/PRIVATE efforts create the “Vision” Central City – VERSUS – Panther Island

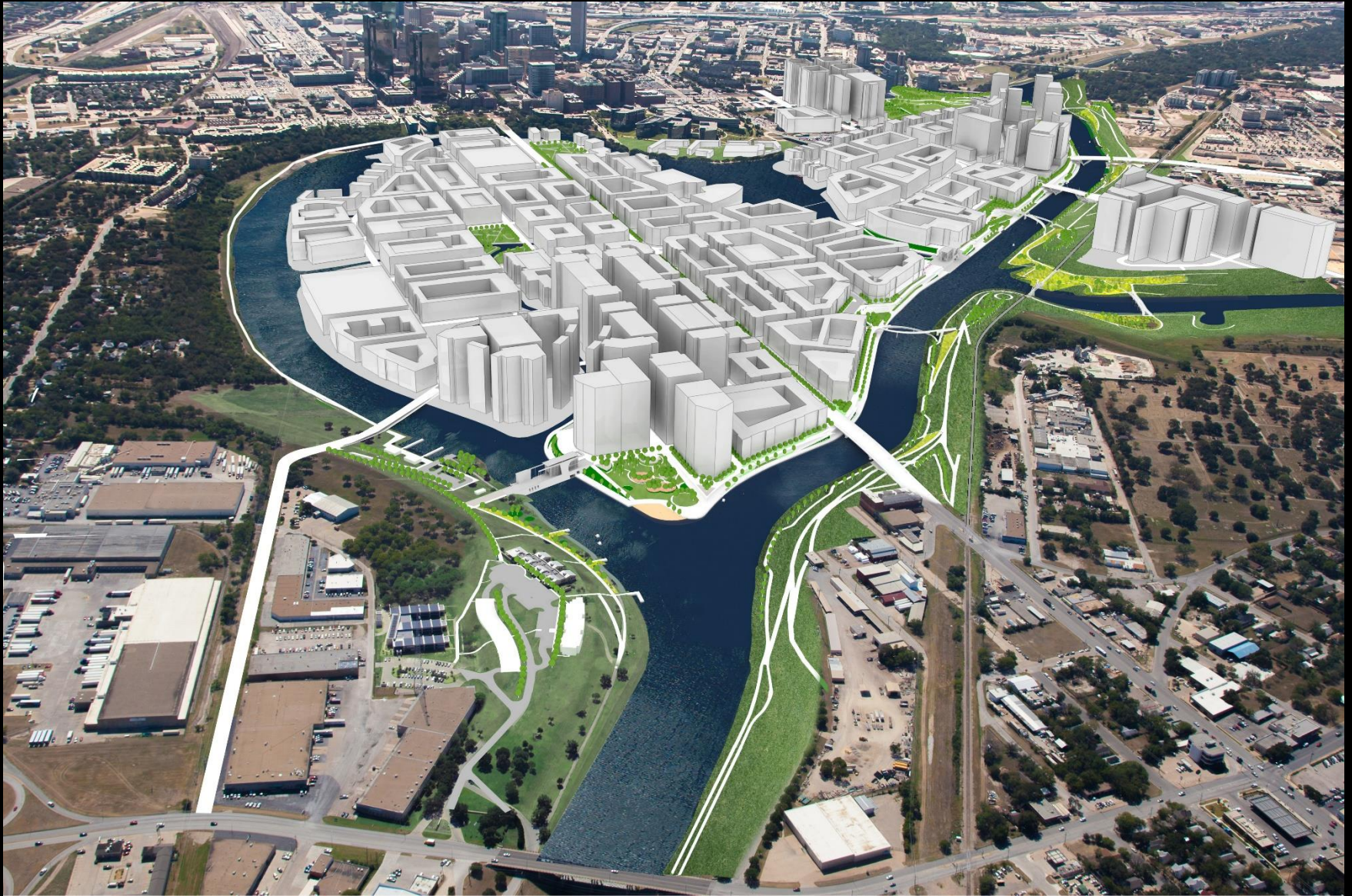
Status Update on the local concurrent effort called Panther Island. It is a local objective that only uses local funds. The local effort will happen with or without the USACE Bypass Channel

ONLY LOCAL
“PANTHER ISLAND”

- 1) Local Projects (CFW infrastructure, canals and park amenities) –
 - PUBLIC - City of Fort Worth
 - PUBLIC - Tarrant Regional Water District
 - PRIVATE – Developer financed
- 2) Panther Island Initiatives (Event programming for branding) –
 - PRIVATE - All financed through sponsorships, ticket & concession sales

Panther Island / Central City Flood Control Project

PANTHER ISLAND: CFW Re-Zoned for High Density Mixed-Use Purpose



Panther Island / Central City Flood Control Project

PANTHER ISLAND: Private Development Underway



Panther Island / Central City Flood Control Project

PANTHER ISLAND: Combining Stormwater Innovation with Public Spaces



Another Public-Private Partnership delivering critical infrastructure

Panther Island / Central City Flood Control Project

PANTHER ISLAND: Fort Worth's Public-Private Riverwalk Underway



Another Public-Private Partnership delivering critical infrastructure

Panther Island / Central City Flood Control Project

EDUCATION CENTER: Stop by to Learn More



Panther Island / Central City Flood Control Project

307 West Seventh Street, Ste. 100
Fort Worth, Texas 76102
817.698.0700

Learn more:

www.PantherIslandCC.com

Follow on Social:



@PantherIslandCC



@PantherIslandCC



@PantherIsland