



INTEGRATED PIPELINE PROJECT QUARTERLY EXECUTIVE SUMMARY

December 2021



*PL17TUN aerial photo of cleanup at
main tunnel shaft location*

IPL PROGRAM MANAGEMENT

Tarrant Regional Water District

804 East Northside Drive

Fort Worth, TX 76102

817.720.4469 p

817.720.4397 f

iplproject.com

[@IPL_Project](https://twitter.com/IPL_Project)

TARRANT REGIONAL WATER DISTRICT (TRWD) and the CITY OF DALLAS WATER UTILITIES (DWU)

have partnered to finance, plan, design, construct and operate the Integrated Pipeline (IPL) Project. The IPL Project is an integrated water delivery transmission system connecting Lake Palestine to Lake Benbrook with connections to Cedar Creek and Richland-Chambers Reservoirs integrating TRWD's existing pipelines and creating flexibility in delivery as well as quick response to fluctuating customer water demands. The IPL Project consists of 150 miles of pipeline, three new lake pump stations, and three new booster pump stations delivering a required capacity of 350 million gallons per day (MGD) of raw water to North Central Texas. TRWD and DWU currently serve over 4.1 million residents and the IPL will allow these agencies to continue supporting regional community and economic growth.

PROGRAM SUPPORT SERVICES

through 12.31.2021

CONTRACT DESIGN AND CONSTRUCTION	DESCRIPTION	BUDGET	CONTRACTS ISSUED	TOTAL INVOICED
PROGRAM WIDE PROFESSIONAL SERVICES		\$133,062,000	\$52,438,996	\$85,567,107
Program Management	Overall program management services for implementation of the IPL Project. (Extension of TRWD staff)	\$45,000,000		\$35,124,711
Conceptual Design / Environmental / Permitting	Operations plan & Prepare 404 permit application, Envision Application Completion	\$13,551,000	\$13,248,701	\$13,248,699
Value Engineering	Expert review of design	\$640,000	\$472,248	\$472,248
Surveying and Mapping	Control, property survey, legal descriptions, and Provide SUE Level A Survey, GIS	\$14,600,000	\$11,854,389	\$10,955,362
Geotechnical	Initial Characterization of entire IPL Project	\$12,037,000	\$12,026,275	\$12,026,276
Corrosion Engineering Services	Engineering Corrosion Control	\$3,891,000	\$5,326,362	\$4,721,217
Land, Easement Acquisition, & Support	Right of Entry and Land Acquisition Support Services	\$33,993,000	\$3,464,526	\$3,433,832
Studies		\$3,500,000	\$3,683,743	\$3,587,585
SCADA System	Engineering of SCADA system	\$640,000	\$0	
Microwave System	Engineering of Communications System	\$5,210,000	\$2,362,752	\$1,997,177
DESIGN & CONSTRUCTION ADMINISTRATION		\$201,714,000	\$179,305,975	\$156,669,196
Completed		\$122,733,000	\$103,809,850	\$102,965,265
Active		\$23,326,000	\$52,722,524	\$42,394,351
CH2M Hill	Project Operational Information and Operations Manual		\$6,479,844	\$5,676,758
CH2M Hill	Final Conformance of Design of JCC1	\$728,000	\$9,288,681	\$7,899,545
MWH	Final Conformance of Design of Section 9/10/11	\$506,000	\$1,307,780	\$1,030,295
Black & Veatch	Engineering during Construction of Section 10/11		\$810,000	\$470,995
Black & Veatch	Final Design of Section 12/13/14	\$11,292,000	\$12,338,807	\$12,278,729
Parsons	Final Design of Sections 17/18/Tunnel		\$0	\$0
Brown & Gay	Final Design of Section 19-1	\$5,770,000	\$8,130,200	\$4,017,315
HDR	Final Design of Section 19-2	\$5,030,000	\$8,358,000	\$6,780,948
Burns & McDonnell Trans. Mgmt.	Development of Transportation Management Plan		\$905,203	\$866,643
Burns & McDonnell	High Voltage Design		\$2,578,809	\$2,494,934
Burns & McDonnell	Section 19 Transportation Management Planning		\$690,000	\$100,964
Burns & McDonnell	Final Design of LP1		\$1,063,600	\$6,188
Furgo Consultants, Inc.	Section 19 Tunnel Geotechnical Testing		\$771,600	\$771,037
IPL Partners	Section 19 Tunnel Crossing		\$21,033,560	\$9,721,712
CH2M Hill	Lake Palestine Interim Stage		\$1,169,231	\$1,169,190
Furgo Consultants, Inc.	Section 19 Groundwater Pumping Testing Services		\$570,810	\$418,678
Remaining		\$55,655,000		
CONSTRUCTION / OWNER FURNISHED EQUIPMENT		\$1,729,540,000	\$719,099,657	\$709,611,471
Completed		\$346,119,000	\$212,008,947	\$211,833,088
Active		\$875,818,000	\$507,090,710	\$497,778,383
JB3		\$83,013,000	\$75,779,477	\$73,949,545
MWH Constructors	Construction of JB3 Pump Station	\$51,473,000	\$57,995,805	\$59,398,603
Oncor Electric	Installation of JB3 Substation Transmission Lines	\$1,066,000	\$957,119	\$923,119
Isolux Corsan	Construction of JB3 Substation	\$7,400,000	\$4,864,888	\$4,864,888
R E Monks	Construction of JB3R Restoration	\$0	\$675,782	\$675,782
Pentair Flow Technologies	Construction of JB3 Pumps, Motors, Drives	\$23,074,000	\$11,285,883	\$8,087,153
Pipeline Section 12/13/MBR/JB4 Bypass		\$167,992,000	\$153,555,744	\$153,532,318
Thalle Midlothian	Construction of Sections 12/13/MBR/JB4 Bypass	\$146,310,000	\$143,253,968	\$143,230,542
BAR Constructors	Construction of Richland-Chambers/Cedar Creek Interconnection Facility	\$21,682,000	\$10,177,546	\$10,177,546
Hilco Electric	Relocation of Electrical Service Lines		\$0	\$0

PROGRAM SUPPORT SERVICES

through 12.31.2021

CONTRACT DESIGN AND CONSTRUCTION	DESCRIPTION	BUDGET	CONTRACTS ISSUED	TOTAL INVOICED
Hilco Electric	MBR Radio Tower Power		\$33,312	\$33,312
Oncor Electric	Provide Power to IPL 2X12		\$90,918	\$90,918
Pipeline Section 17		\$109,944,000	\$94,295,830	\$95,700,092
IPL Partners	Construction of Section 17 Tunnel	\$12,252,000	\$48,500,000	\$48,288,969
Thalle Midlothian	Construction of Sections 17/18/JB2 Bypass	\$97,692,000	\$45,795,830	\$47,411,123
CAS Consulting	Design 17, 19 Tunnels		\$3,341,651	\$594,866
Freese and Nichols	Construction Management 17,19, JCC1		\$3,771,901	\$803,325
JCC1		\$106,582,000	\$105,875,879	\$103,214,907
BAR Constructors	Construction of JCC1 Intake	\$21,564,000	\$18,960,214	\$18,960,214
BAR Constructors	Intake Facility & OFE Installation Package 2	\$63,900,000	\$63,690,600	\$62,147,261
Ebara	Construction of JCC1 Pumps, Motors, Drives	\$17,775,000	\$12,694,890	\$11,680,768
Lambda Construction	High Voltage		\$5,773,925	\$5,670,414
Oncor Electric	Construction of JCC1 HV Transmission Lines	\$3,343,000	\$4,756,250	\$4,756,250
Shermco Industries, Inc.	JCC1 and JCC1HV Electrical Testing Services		\$618,000	\$480,593
Pipeline Section 10/11		\$73,679,000	\$55,545,934	\$55,545,325
IPL Partners	Construction of Section 10/11	\$72,362,000	\$42,022,945	\$42,022,337
Oncor Electric	Construction of KBR S1X10 HV Transmission Lines		\$17,452	\$17,452
BAR Constructors	Construction of KBR S1X10	\$1,317,000	\$13,505,537	\$13,505,536
Valve Packages		\$15,166,000	\$14,306,294	\$13,957,412
Garney Construction	Valve Package 1 - Section 15-1 Butterfly Valves	\$518,000	\$0	\$0
Rodney Hunt	Valve Package 2 - Section 15-1 Interconnection Facility Valves	\$474,000	\$733,206	\$733,206
Blackhall Engineering	Valve Package 3 - JB3, Section 15-2, MBR Yard Gate Valves	\$5,500,000	\$6,278,388	\$6,228,595
Crispin Valves	Valve Package 4 - Section 12 RC/CC Interconnection, JB4 Bypass, MBR Yard Butterfly Valves	\$3,999,000	\$2,269,140	\$2,191,128
Crispin Valves	Valve Package 5 - JB3 Butterfly Valves	\$1,249,000	\$1,249,222	\$1,175,870
Ross Valves	Valve Package 6 - Section 12 RC/CC Interconnection Multi-Orifice Valves	\$715,000	\$526,340	\$478,838
Crispin Valves	Valve Package 8 - Section 10 & 11 Bypass Butterfly Valves	\$1,391,000	\$1,461,040	\$1,393,968
Blackhall Engineering	Valve Package 11 - JCC1 Gate Valve	\$1,320,000	\$1,788,958	\$1,755,807
Remaining		\$507,603,000		
CONSTRUCTION MANAGEMENT		\$65,170,000	\$59,634,680	\$54,500,243
Completed		\$15,777,000	\$15,747,552	\$15,747,553
Active		\$17,665,000	\$43,887,128	\$38,752,690
Remaining		\$31,728,000		
CONSTRUCTION MATERIALS TESTING		\$17,296,000	\$13,161,251	\$10,674,145
Completed		\$203,000	\$225,133	\$225,132
Active		\$7,791,000	\$12,936,118	\$10,449,013
Remaining		\$9,302,000		
ROCIPI		\$2,575,000	\$42,013,560	\$23,117,815
LAND COST		\$107,384,000	\$78,532,928	\$78,532,928
PROGRAM LEVEL CONTINGENCY		\$83,178,000		
MISCELLANEOUS		\$2,000,000	\$3,903,305	\$3,903,305
GRAND TOTAL		\$2,341,919,000	\$1,148,090,353	\$1,122,576,211
REMAINING BOND FUNDS				\$319,344,669

Note: Total Bonds issued to date \$1,500,000,000

ACCOMPLISHMENTS

through 12.31.2021

IPL PROGRAM GENERAL OPERATIONAL STATUS

The IPL System is currently able to deliver water from Richland Chambers Reservoir to the cross-connections with the existing Richland Chambers and Cedar Creek pipelines at the S2X12 Interconnect Facility near Joe Pool Lake and the future DWU connection point. The IPL System is also able to deliver water to the Arlington Outlet via the S1X10 Pressure Reduction Station, the KBR Bypass pipeline and the Line J Pipeline. Water can be delivered via the IPL system and the existing pipelines to the Rolling Hills Water Treatment Plant and to Lake Benbrook.

The IPL pipelines and facilities that have been completed to accomplish this delivery are:

- S5X15 Interconnect
- Pipeline Sections 15-1 and 15-2

- JB3R Suction Reservoir
- JB3 Booster Pump Station
- Pipeline Section 14

- Midlothian Balancing Reservoir
- Pipeline Sections 12 and 13
- S2X12 Interconnect Facility

- Pipeline Sections 10 and 11
- S1X10 Pressure Reduction Station

CURRENT PROJECT UPDATES

- PL12, 13, MBR** (Pipeline Sections 12 and 13 combined with the Midlothian Balancing Reservoir)

 - Project is complete and operational pending contract closeout.
- PL17TUN** (Trinity River Tunnel on Pipeline Section 17)

 - Completed cleanup of equipment and material around main shaft.
 - Restored topsoil around main shaft.
 - Placing road base material on Private Road to the ROW.
 - Installing road base material at turn out on ROW.
- JCC1** (Cedar Creek Lake Pump Station)

 - Coupled and aligned motors and pumps.
 - Set limits on pump control and bypass ball valves.
 - Performed VFD Sequence testing.
 - Continue installation of conduit and wiring for heat trace and fire alarms.
 - Coated piping at JB2 Valve Vault site.
 - Installed electrical ductbanks at JB2 Valve Vault site.
- PL10, 11** (Pipeline Sections 10 and 11 from the JB4 Pump Station to the KBR Pressure Reduction Facility)

 - Project is complete; final payment and contract closeout were in December 2021.

- PL17-18** (Pipeline Sections 17 and 18 from east end of PL15-1 to JCC1 Pump Station)

 - Project is complete; final payment and contract closeout were in December 2021.
- PL19TX** (Tunnels at TxDOT Roadway Crossings for Pipeline Sections 19-1 & 19-2)

 - Completed welding joints Crossroads Dr.
 - Completed jacking 117" casing pipe and extension of launch shaft at SH 19.
 - Completed excavation of tunnel, installation of tunnel support, and installation and welding of carrier pipe at FM 1615.
 - Installing access manway vaults.
- PL19TUN** (Cedar Creek; SH 31; Hollywood Lake; SH 151/Frankston ISD Tunnels for Pipeline Sections 19-1 & 19-2)

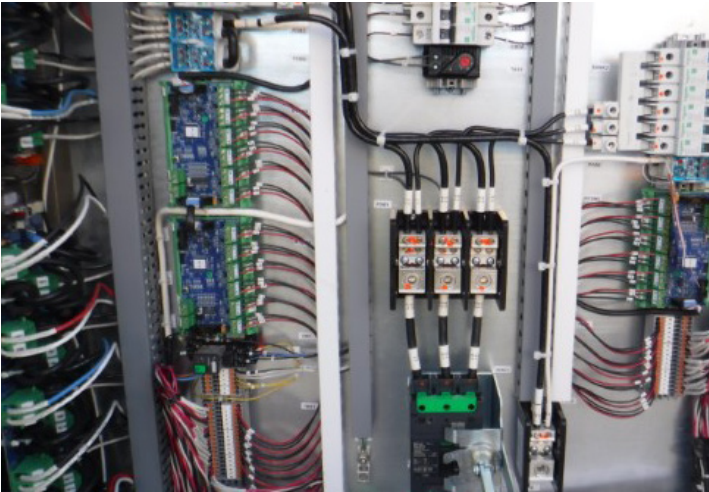
 - Received proposals from four Offerors.
 - Evaluated proposals, shortlisted three teams and concluded selection and negotiation.
 - Recommendation for award of contract scheduled for January 2022 Board.

PROJECT SCHEDULE

PROJECT COMPONENTS	2020				2021				2022			
	Q1	Q2	Q3	Q4	Q1	Q2	Q3	Q4	Q1	Q2	Q3	Q4
SECTION 17 TUNNEL CONSTRUCTION												SUBSTANTIALLY COMPLETE
JCC1 PUMP STATION INTAKE WET WELL CONSTRUCTION												SUBSTANTIALLY COMPLETE
SECTION 10, 11 CONSTRUCTION												COMPLETE
SECTION 17, 18 CONSTRUCTION												COMPLETE
JCC1 HIGH VOLTAGE SUBSTATION CONSTRUCTION												SUBSTANTIALLY COMPLETE
JCC1 CONSTRUCTION												SUBSTANTIALLY COMPLETE
PL19TX CONSTRUCTION												

ACTIVITY STATUS

through 12.31.2021



JCC1 RTD power and control wiring in heat trace panel

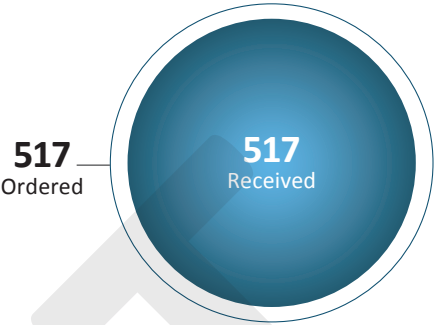


PL19TX Completion of launch shaft extension at SH 19

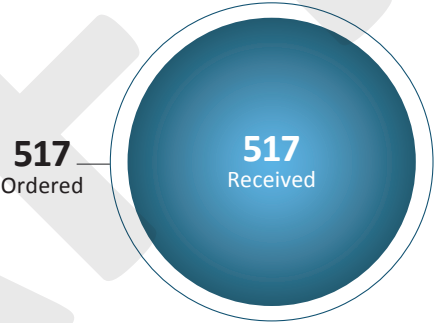


PL19TX Installation of access manway vault at Crossroads Dr.

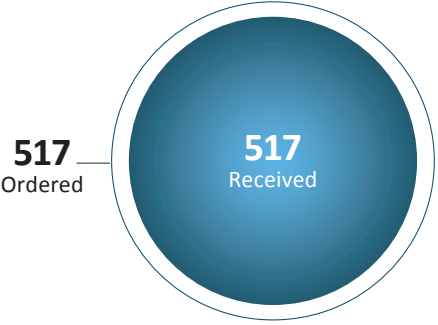
TITLE COMMITMENTS



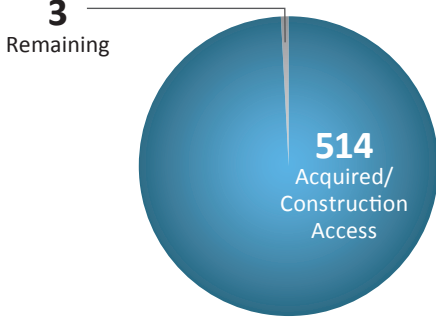
SURVEYS



APPRAISALS



LAND ACQUISITION



Total Parent Parcels: 517

M/WBE PARTICIPATION

through 12.31.2021

CONTRACT DESIGN AND CONSTRUCTION	M/WBE & HUB SUB-CONTRACTORS	CONTRACT COMMITMENT		M/WBE HUB INVOICED TO DATE		TOTAL PROJECT COMPLETED TO DATE	
		\$	%	\$	% (PER COMMITMENT)	\$	%
PROGRAM WIDE PROFESSIONAL SERVICES		\$20,396,220	39%	\$19,869,653	97%	\$85,567,107	163%
Program Management		\$6,636,154		\$6,636,689		\$35,124,711	0%
Conceptual Design / Environmental / Permitting		\$2,655,040	20%	\$2,827,565	106%	\$13,248,699	100%
Value Engineering		\$23,187	5%	\$23,178	100%	\$472,248	100%
Surveying and Mapping		\$3,939,250	33%	\$3,831,614	97%	\$10,955,362	92%
Geotechnical		\$3,545,179	29%	\$3,545,034	100%	\$12,026,276	100%
Corrosion Engineering Services		\$1,442,047	27%	\$764,939	53%	\$4,721,217	89%
Land, Easement Acquisition, & Support		\$1,294,859	37%	\$1,534,532	119%	\$3,433,832	99%
Studies		\$41,738	1%	\$41,717	100%	\$3,587,585	97%
Microwave System		\$818,765	35%	\$664,385	81%	\$1,997,177	85%
DESIGN		\$46,184,319	26%	\$38,782,789	84%	\$156,669,196	87%
Completed		\$28,488,898	27%	\$28,528,024	100%	\$102,965,265	99%
Active		\$10,946,375	21%	\$9,276,287	85%	\$41,516,162	79%
CH2M Hill (Ops Manual)	NDM	\$1,063,512	16%	\$939,841	88%	\$5,676,758	88%
CH2M Hill (JCC1)	JQ, Gupta, APM, HVJ, XENCO	\$2,322,170	25%	\$3,044,112	131%	\$7,899,545	85%
MWH	Garzabury, Kevin Sloan	\$364,871	28%	\$221,636	61%	\$1,030,295	79%
Black & Veatch	Texas Design	\$0	0%	\$2,100	0%	\$470,995	58%
Black & Veatch	BDS, CAS, JQ, TME	\$3,056,716	25%	\$3,023,303	99%	\$12,278,729	100%
Parsons	Criado, EPB, HVJ	\$0	0%	\$0	0%	\$0	0%
Brown & Gay	AZB, TME, Lamb-Star, NDM	\$2,032,550	25%	\$807,808	40%	\$4,017,315	49%
HDR	AZB, Daltech, Word Wizards, Gupta	\$1,944,071	23%	\$1,115,989	57%	\$6,780,948	81%
Burns & McDonnell Trans. Mgmt.	Lamb-Star Engineering	\$162,485	18%	\$121,498	75%	\$866,643	96%
Burns & McDonnell	HVJ, JQ, Multatech	\$611,538	24%	\$542,454	89%	\$2,494,934	97%
Burns & McDonnell	Lamb-Star Engineering, LLC, Transtec Group Inc.	\$172,500	25%	\$36,509	21%	\$100,964	15%
Burns & McDonnell		\$265,900	25%	\$0	0%	\$6,188	1%
Furgo Consultants, Inc.		\$0	0%	\$0	0%	\$771,037	100%
IPL Partners	Section 19 Tunnel Crossing	\$5,258,390	25%	\$109,342	2%	\$9,721,712	46%
CH2M Hill	Lake Palestine Interim Stage	\$292,308	25%	\$290,173	99%	\$1,169,190	100%
Furgo Consultants, Inc.	Section 19 Groundwater Pumping Testing Services	\$148,411	26%	\$0	0%	\$418,678	73%
Remaining		\$0	0%	\$0	0	\$0	0%
CONSTRUCTION / OWNER FURNISHED EQUIPMENT		\$100,285,995	14%	\$179,741,130	179%	\$709,629,907	99%
Completed		\$23,397,169	11%	\$38,680,042	165%	\$211,833,088	100%
Active		\$76,888,826	32%	\$141,061,088	183%	\$497,796,819	98%
JB3		\$15,258,538	26%	\$12,849,194	84%	\$73,949,545	98%
MWH Constructors	Statewide, Cowboy, TX Enviro, Champion, Ram Tool, Rent-a-Fence, Soto Steel, A-Star, Ike, Greystone, LKT, Accurate, Green Scaping	\$13,808,801	27%	\$11,399,274	83%	\$59,398,603	102%
Oncor Electric		\$1,449,737	2%	\$1,449,920	100%	\$4,864,888	8%
Isolux Corsan	Dyna Grid	\$0	0%	\$0	0%	\$923,119	96%
RE Monks		\$0	0%	\$0	0%	\$675,782	14%
Pentair Flow Technologies		\$0	0%	\$0	0%	\$8,087,153	72%

M/WBE PARTICIPATION

through 12.31.2021

CONTRACT DESIGN AND CONSTRUCTION	M/WBE & HUB SUB-CONTRACTORS	CONTRACT COMMITMENT		M/WBE HUB INVOICED TO DATE		TOTAL PROJECT COMPLETED TO DATE	
		\$	%	\$	% (PER COMMITMENT)	\$	%
Pipeline Section 12/13/MBR/JB4 Bypass		\$22,014,773	24%	\$22,270,126	101%	\$153,532,318	100%
Thalle Midlothian	LKT, Statewide, Granados, Desert Steel, ETTL, Glenko, A.N.A., Edwards, Buzz, Bradley-Douglas, Pinnacle	\$21,201,587	27%	\$16,449,588	78%	\$143,230,542	100%
BAR Constructors	Fraire's, DFW Aggregates, Ricochet, MMG, LKT, Brock, Garland Heating & Air, Texas Metal, Buzz, Rangel	\$813,186	8%	\$5,820,538	716%	\$10,177,546	100%
Hilco Electric		\$0	0%	\$0	0%	\$33,312	100%
Oncor Electric		\$0	0%	\$0	0%	\$90,918	100%
Pipeline Section 17		\$15,151,597	23%	\$7,226,323	48%	\$95,700,092	101%
IPL Partners	LKT, Industry Junction, Eagle Aggregate, Suncoast Res, ATS Drilling, RECS, ANA, Alliance,Ram, JC Welding, Luis Moreno	\$9,733,950	23%	\$4,125,302	42%	\$48,288,969	100%
Thalle Midlothian	Fleet Lube, Rambo Controls, AE Trucking, MKI Construction, Stome Water Management, Indusly Junction, Ortega Land Clearing	\$5,417,647	24%	\$3,101,021	57%	\$47,411,123	104%
CAS Consulting	Design 17, 19 Tunnels	\$0	0%	\$0	0%	\$594,866	18%
Freese and Nichols	Construction Management 17,19, JCC1	\$452,628	17%	\$101,939	23%	\$803,325	21%
JCC1		\$17,080,697	19%	\$81,080,356	475%	\$103,214,907	97%
BAR Constructors	Industry Junction, K&A Steel, Ricochet Fuel, Ricochet Fuel, Tidy Toilets, Buzz Custom Fence	\$961,283	6%	\$18,008,980	1873%	\$18,960,214	100%
BAR Constructors	Industry Junction, K&A Steel, Ricochet Fuel, Ricochet Fuel, Tidy Toilets	\$14,011,932	23%	\$62,147,261	444%	\$62,147,261	98%
Ebara		\$0	0%	\$0	0%	\$11,680,768	202%
Lambda Construction	High Voltage	\$2,107,483	37%	\$924,115	44%	\$5,670,414	98%
Oncor Electric		\$0	0%	\$0	0%	\$4,756,250	100%
Shermco Industries, Inc.	JCC1 and JCC1HV Electrical Testing Services	\$0	0%	\$0	0%	\$499,029	81%
Pipeline Section 10/11		\$6,930,593	20%	\$17,533,150	253%	\$55,545,325	100%
IPL Partners	LKT, Industry Junction, Eagle Aggregate, Suncoast Res, ATS Drilling, RECS, ANA, Alliance,Ram, JC Welding, Luis Moreno	\$5,526,017	25%	\$4,027,614	73%	\$42,022,337	100%
Oncor Electric		\$0	0%	\$0	0%	\$17,452	100%
BAR Constructors	Industry Junction,VSG Trucking, Ricochet, MMG Disposal,Garland HVAC,CMC Rebar, Buzz Custum Fence, K&A Steel, Rangle Land Surveying	\$1,404,576	11%	\$13,505,536	962%	\$13,505,536	100%
Valve Packages		\$0	0%	\$0	0%	\$13,957,412	98%
CONSTRUCTION MANAGEMENT		\$18,034,362	30%	\$21,465,138	119%	\$54,500,243	91%
Completed		\$5,928,654	38%	\$5,954,412	100%	\$15,747,553	100%
Active		\$12,105,707	28%	\$15,510,726	128%	\$38,752,690	88%
CONSTRUCTION MATERIALS TESTING		\$6,696,313	51%	\$5,500,989	82%	\$10,674,145	81%
Completed		\$219,036	97%	\$219,036	100%	\$225,132	100%
Active		\$6,477,277	50%	\$5,281,953	82%	\$10,449,013	81%
ROCIPI		\$900,712	2%	\$370,813	41%	\$23,117,815	55%
TOTAL		\$192,497,922	24%	\$265,730,512	138%	\$1,040,158,413	98%
LAND COST		\$0	0%	\$61,892	0%	\$78,532,928	187%
MISCELLANEOUS		\$0	0%	\$0	0%	\$3,903,305	5%
GRAND TOTAL		\$192,497,922	24%*	\$265,792,404	138%	\$1,122,594,647	98%
* Denotes participation percentage excluding cost of pipe and owner furnished equipment.				M/WBE/HUB Invoiced		\$265,792,404	
				Grand Total Invoiced		\$1,122,594,647	
				* Exclusions Invoiced		\$322,358,973	
				MWBE %		33.2%	

PROJECT COMPONENTS

PIPELINE SEGMENTS	DESCRIPTION
Section 9	KBR Turn-Out Tee to existing Benbrook Connection Pipeline (10.6 mi. 84" dia. Pipe + 5 mi. 120" Tunnel)
Section 10	KBR Turn-Out Tee to KBR (2.4 mi. 84" dia. Pipe)
Section 11	JB4 to KBR Turn-Out Tee (10 mi. 84" dia. Pipe)
Section 12	JB4 to existing CC and RC Pipelines (2.2 mi. 108" dia. Pipe)
Section 13	MBR2 (Midlothian Balancing Reservoir) to JB4 (11 mi. 108" dia. Pipe)
Section 14	JB3 to MBR2 (Midlothian Balancing Reservoir) (14.9 mi. 108" dia. Pipe)
Section 15	JB2 to JB3 (28.5 mi 108" dia. Pipe)
Section 16	JRC1 (Joint Richland Chambers Lake Pump Station) to JB2 (12.3 mi. 96" dia. Pipe)
Section 17	Cedar Creek Connection to JB2 (11.2 mi. 108" dia. Pipe)
Section 18	JCC1 (Joint Cedar Creek Lake Pump Station) to Cedar Creek Connection (0.2 mi. 108" dia. Pipe)
Section 19	LP1 (Lake Palestine Pump Station) to Cedar Creek Connection (42.3 mi. 84" dia. Pipe)

PUMP STATIONS	DESCRIPTION
Palestine Pump Station	150 mgd with new intake
Cedar Creek Pump Station	277 mgd with new intake
Richland Chambers Pump Station	250 mgd Ultimate Design Capacity
Booster Pump Stations	Two @ 347 mgd and one @ 197 mgd (● one 347 mgd station - JB3)

SUPPORT FACILITIES	DESCRIPTION
Reservoirs	Three reservoirs (80 – 400 mgd) - two for booster pump stations and one for balancing. Two of the reservoirs are core projects – JB3R and MBR
Deep Tunnels	5 mi of 10' dia. tunnel @ Crowley (included in length of Section 9)
Substations & High Voltage Transmission Lines	Six substations and 4 mi. of high voltage transmission lines (● two substations)
Microwave Communications and SCADA System	Provides remote operations capability and system monitoring

