



INTEGRATED PIPELINE PROJECT

QUARTERLY EXECUTIVE SUMMARY

March 2021



JCC1 Pump
Room
overview

IPL PROGRAM MANAGEMENT

Tarrant Regional Water District
804 East Northside Drive
Fort Worth, TX 76102
817.720.4469 p
817.720.4397 f
iplproject.com
[@IPL_Project](https://twitter.com/IPL_Project)

TARRANT REGIONAL WATER DISTRICT (TRWD) and the **CITY OF DALLAS WATER UTILITIES (DWU)** have partnered to finance, plan, design, construct and operate the Integrated Pipeline (IPL) Project. The IPL Project is an integrated water delivery transmission system connecting Lake Palestine to Lake Benbrook with connections to Cedar Creek and Richland-Chambers Reservoirs integrating TRWD's existing pipelines and creating flexibility in delivery as well as quick response to fluctuating customer water demands. The IPL Project consists of 150 miles of pipeline, three new lake pump stations, and three new booster pump stations delivering a required capacity of 350 million gallons per day (MGD) of raw water to North Central Texas. TRWD and DWU currently serve over 4.1 million residents and the IPL will allow these agencies to continue supporting regional community and economic growth.

PROGRAM SUPPORT SERVICES

through 03.31.2021

CONTRACT DESIGN AND CONSTRUCTION	DESCRIPTION	BUDGET	CONTRACTS ISSUED	TOTAL INVOICED
PROGRAM WIDE PROFESSIONAL SERVICES		\$133,062,000	\$87,563,707	\$85,508,052
Program Management	Overall program management services for implementation of the IPL Project. (Extension of TRWD staff)	\$45,000,000	\$35,124,711	\$35,124,711
Conceptual Design / Environmental / Permitting	Operations plan & Prepare 404 permit application, Envision Application Completion	\$13,551,000	\$13,248,701	\$13,248,699
Value Engineering	Expert review of design	\$640,000	\$472,248	\$472,248
Surveying and Mapping	Control, property survey, legal descriptions, and Provide SUE Level A Survey, GIS	\$14,600,000	\$11,854,389	\$10,947,471
Geotechnical	Initial Characterization of entire IPL Project	\$12,037,000	\$12,026,275	\$12,026,276
Corrosion Engineering Services	Engineering Corrosion Control	\$3,891,000	\$5,326,362	\$4,670,053
Land, Easement Acquisition, & Support	Right of Entry and Land Acquisition Support Services	\$33,993,000	\$3,464,526	\$3,433,832
Studies		\$3,500,000	\$3,683,743	\$3,587,585
SCADA System	Engineering of SCADA system	\$640,000	\$0	\$0
Microwave System	Engineering of Communications System	\$5,210,000	\$2,362,752	\$1,997,177
DESIGN & CONSTRUCTION ADMINISTRATION		\$201,714,000	\$156,532,374	\$142,847,917
Completed		\$122,733,000	\$103,809,850	\$102,696,775
Active		\$23,326,000	\$52,722,524	\$40,151,142
CH2M Hill	Project Operational Information and Operations Manual		\$6,479,844	\$5,289,367
CH2M Hill	Final Conformance of Design of JCC1	\$728,000	\$9,288,681	\$7,645,482
MWH	Final Conformance of Design of Section 9/10/11	\$506,000	\$1,307,780	\$1,025,773
Black & Veatch	Engineering during Construction of Section 10/11		\$810,000	\$469,908
Black & Veatch	Final Design of Section 12/13/14	\$11,292,000	\$12,338,807	\$12,278,729
Parsons	Final Design of Sections 17/18/Tunnel		\$0	\$0
Brown & Gay	Final Design of Section 19-1	\$5,770,000	\$8,130,200	\$3,820,343
HDR	Final Design of Section 19-2	\$5,030,000	\$8,358,000	\$5,690,950
Burns & McDonnell Trans. Mgmt.	Development of Transportation Management Plan		\$905,203	\$866,643
Burns & McDonnell	High Voltage Design		\$2,578,809	\$2,494,934
Burns & McDonnell	Section 19 Transportation Management Planning		\$690,000	\$92,190
Burns & McDonnell	Final Design of LP1		\$1,063,600	\$6,188
Furgo Consultants, Inc.	Section 19 Tunnel Geotechnical Testing		\$771,600	\$470,635
Remaining		\$55,655,000		
CONSTRUCTION / OWNER FURNISHED EQUIPMENT		\$1,729,540,000	\$711,368,105	\$696,459,327
Completed		\$346,119,000	\$212,008,947	\$211,833,088
Active		\$875,818,000	\$499,359,158	\$484,626,239
JB3		\$83,013,000	\$75,779,477	\$71,211,755
MWH Constructors	Construction of JB3 Pump Station	\$51,473,000	\$57,995,805	\$56,660,813
Oncor Electric	Installation of JB3 Substation Transmission Lines	\$1,066,000	\$957,119	\$923,119
Isolux Corsan	Construction of JB3 Substation	\$7,400,000	\$4,864,888	\$4,864,888
R E Monks	Construction of JB3R Restoration	\$0	\$675,782	\$675,782
Pentair Flow Technologies	Construction of JB3 Pumps, Motors, Drives	\$23,074,000	\$11,285,883	\$8,087,153
Pipeline Section 12/13/MBR/IB4 Bypass		\$167,992,000	\$153,555,744	\$153,532,318
Thalle Midlothian	Construction of Sections 12/13/MBR/IB4 Bypass	\$146,310,000	\$143,253,968	\$143,230,542
BAR Constructors	Construction of Richland-Chambers/Cedar Creek Interconnection Facility	\$21,682,000	\$10,177,546	\$10,177,546
Hilco Electric	MBR Radio Tower Power		\$33,312	\$33,312
Oncor Electric	Provide Power to IPL 2X12		\$90,918	\$90,918

PROGRAM SUPPORT SERVICES

through 03.31.2021

CONTRACT DESIGN AND CONSTRUCTION	DESCRIPTION	BUDGET	CONTRACTS ISSUED	TOTAL INVOICED
Pipeline Section 17		\$109,944,000	\$94,295,830	\$91,356,798
IPL Partners	Construction of Section 17 Tunnel	\$12,252,000	\$48,500,000	\$47,456,563
Thalle Midlothian	Construction of Sections 17/18/IB2 Bypass	\$97,692,000	\$45,795,830	\$43,900,235
JCC1		\$106,582,000	\$105,875,879	\$99,022,631
BAR Constructors	Construction of JCC1 Intake	\$21,564,000	\$18,960,214	\$18,960,214
BAR Constructors	Intake Facility & OFE Installation Package 2	\$63,900,000	\$63,690,600	\$58,180,857
Ebara	Construction of JCC1 Pumps, Motors, Drives	\$17,775,000	\$12,694,890	\$11,680,768
Lambda Construction	High Voltage		\$5,773,925	\$5,444,542
Oncor Electric	Construction of JCC1 HV Transmission Lines	\$3,343,000	\$4,756,250	\$4,756,250
Pipeline Section 10/11		\$73,679,000	\$55,545,934	\$55,545,325
IPL Partners	Construction of Section 10/11	\$72,362,000	\$42,022,945	\$42,022,337
Oncor Electric	Construction of KBR S1X10 HV Transmission Lines		\$17,452	\$17,452
BAR Constructors	Construction of KBR S1X10	\$1,317,000	\$13,505,537	\$13,505,536
Valve Packages		\$15,166,000	\$14,306,294	\$13,957,412
Garney Construction	Valve Package 1 - Section 15-1 Butterfly Valves	\$518,000	\$0	\$0
Rodney Hunt	Valve Package 2 - Section 15-1 Interconnection Facility Valves	\$474,000	\$733,206	\$733,206
Blackhall Engineering	Valve Package 3 - JB3, Section 15-2, MBR Yard Gate Valves	\$5,500,000	\$6,278,388	\$6,228,595
Crispin Valves	Valve Package 4 - Section 12 RC/CC Interconnection, JB4 Bypass, MBR Yard Butterfly Valves	\$3,999,000	\$2,269,140	\$2,191,128
Crispin Valves	Valve Package 5 - JB3 Butterfly Valves	\$1,249,000	\$1,249,222	\$1,175,870
Ross Valves	Valve Package 6 - Section 12 RC/CC Interconnection Multi-Orifice Valves	\$715,000	\$526,340	\$478,838
Crispin Valves	Valve Package 8 - Section 10 & 11 Bypass Butterfly Valves	\$1,391,000	\$1,461,040	\$1,393,968
Blackhall Engineering	Valve Package 11 - JCC1 Gate Valve	\$1,320,000	\$1,788,958	\$1,755,807
Remaining		\$507,603,000		
CONSTRUCTION MANAGEMENT		\$65,170,000	\$54,074,008	\$49,693,830
Completed		\$15,777,000	\$15,747,552	\$15,747,553
Active		\$17,665,000	\$38,326,456	\$33,946,277
Remaining		\$31,728,000		
CONSTRUCTION MATERIALS TESTING		\$17,296,000	\$12,931,087	\$10,533,432
Completed		\$203,000	\$225,133	\$225,132
Active		\$7,791,000	\$12,705,954	\$10,308,300
Remaining		\$9,302,000		
ROCIPI		\$2,575,000	\$32,545,971	\$23,117,815
LAND COST		\$107,384,000	\$78,532,928	\$78,532,928
PROGRAM LEVEL CONTINGENCY		\$83,178,000		
MISCELLANEOUS		\$2,000,000	\$3,903,305	\$3,903,305
GRAND TOTAL		\$2,341,919,000	\$1,137,451,486	\$1,090,596,607
REMAINING BOND FUNDS				\$131,000,000

Note: Total Bonds issued to date \$1,500,000,000

ACCOMPLISHMENTS

through 03.31.2021

IPL PROGRAM GENERAL OPERATIONAL STATUS

The IPL System is currently able to deliver water from Richland Chambers Reservoir to the cross-connections with the existing Richland Chambers and Cedar Creek pipelines at the S2X12 Interconnect Facility near Joe Pool Lake and the future DWU connection point. The IPL System is also able to deliver water to the Arlington Outlet via the S1X10 Pressure Reduction Station, the KBR Bypass pipeline and the Line J Pipeline. Water can be delivered via the IPL system and the existing pipelines to the Rolling Hills Water Treatment Plant and to Lake Benbrook.

The IPL pipelines and facilities that have been completed to accomplish this delivery are:

- S5X15 Interconnect
- Pipeline Sections 15-1 and 15-2
- JB3R Suction Reservoir
- JB3 Booster Pump Station
- Pipeline Section 14
- Midlothian Balancing Reservoir
- Pipeline Sections 12 and 13
- S2X12 Interconnect Facility
- Pipeline Sections 10 and 11
- S1X10 Pressure Reduction Station

CURRENT PROJECT UPDATES

PL12, 13, MBR (Pipeline Sections 12 and 13 combined with the Midlothian Balancing Reservoir)

- Project is complete and operational pending contract closeout.

JB3 (250mgd Pump Station expandable to 350mgd)

- Project is complete and operational pending contract closeout.

PL17TUN (Trinity River Tunnel on Pipeline Section 17)

- Completed grouting annular space at both east and west tunnel sections.
- Installing open-cut portion of pipeline on east side of the Trinity River.
- Installed well points for east side open cut to help relieve ground water.
- Spread topsoil on ROW to the west portal shaft.

JCC1 (Cedar Creek Lake Pump Station)

- Completed control room and installed network equipment and switches.
- Pulled fiber optic cables and CAT 6 to communication devices.
- Inspected and cleaned out pump cans.
- Manufacturer's reps checked installation of Vibration Monitoring System on pump motors.
- Filled chilled water system up with glycol.
- Manufacturer's reps inspected and started up mechanical chillers for motor cooling.
- Manufacturer's reps inspected and started up UPS installations.
- Installed electrical and control wiring to all of the water wells.
- Manufacturer's reps inspected installation and performed startup of ball valves and local control panels.
- Continued electrical wiring to Pump Station and Chemical Building equipment.
- Installed Pump Station high bay lighting.

PL10, 11 (Pipeline Sections 10 and 11 from the JB4 Pump Station to the KBR Pressure Reduction Facility)

- Project is complete and operational pending contract closeout.

PL17-18 (Pipeline Sections 17 and 18 from east end of PL15-1 to JCC1 Pump Station)

- Grading and preparing ROW for permanent grass seeding.

PL19TX (Tunnels at TxDOT Roadway Crossings for Pipeline Sections 19-1 & 19-2)

- Delivered 84-inch pipe to FM 753 and FM 59.
- Completed tunnel excavation and liner plate installation at FM 753.
- Completed launch and receiving shaft excavation at Crossroads Dr.
- Delivered launch frame and shielded excavator rear shield.
- Completed installation of HDPE conduit at FM 753.
- Cleaned FM 753 tunnel and removed utilities to prepare for carrier pipe installation.
- Began installation of carrier pipe at FM 753.
- Began installation of culverts on east and west sides of FM 2636.
- Cleared, grubbed and hauled mulch off of FM 2636 site.
- Delivered tunnel support system to FM 59 site.

PL19TUN (Cedar Creek; SH 31; Hollywood Lake; SH 151/Frankston ISD Tunnels for Pipeline Sections 19-1 & 19-2)

- Geotechnical borings field work complete.
- Geotechnical lab work is complete.
- Conducted workshops with prequalified contractors regarding risk management and project approach.
- Project team has met with Henderson and Anderson County commissioners to inform regarding project sequence and scheduling.

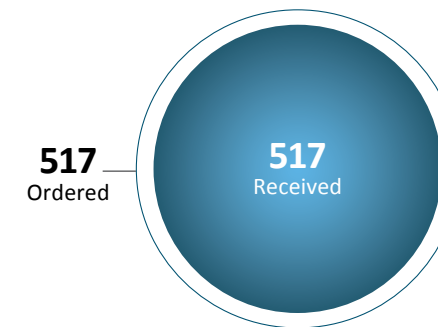
PROJECT SCHEDULE

PROJECT COMPONENTS	2019				2020				2021			
	Q1	Q2	Q3	Q4	Q1	Q2	Q3	Q4	Q1	Q2	Q3	Q4
SECTION 17 TUNNEL CONSTRUCTION												
JCC1 PUMP STATION INTAKE WET WELL CONSTRUCTION												
SECTION 17, 18 CONSTRUCTION												
JCC1 HIGH VOLTAGE SUBSTATION CONSTRUCTION												
JCC1 CONSTRUCTION												
PL19TX CONSTRUCTION												

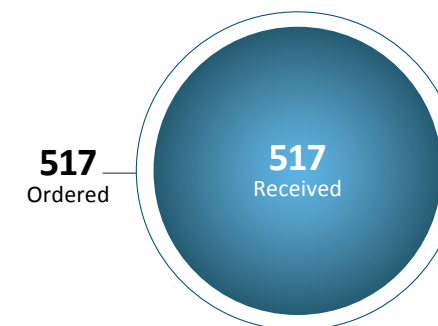
ACTIVITY STATUS

through 03.31.2021

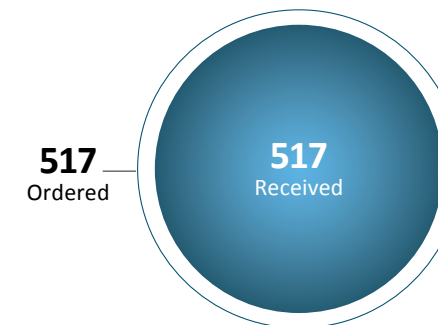
TITLE COMMITMENTS



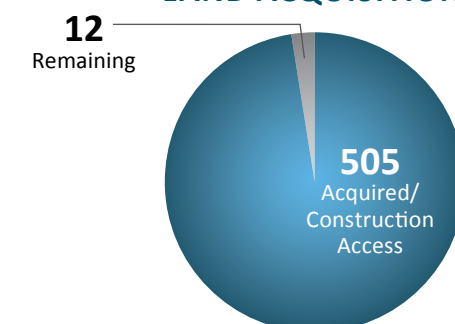
SURVEYS



APPRAISALS



LAND ACQUISITION



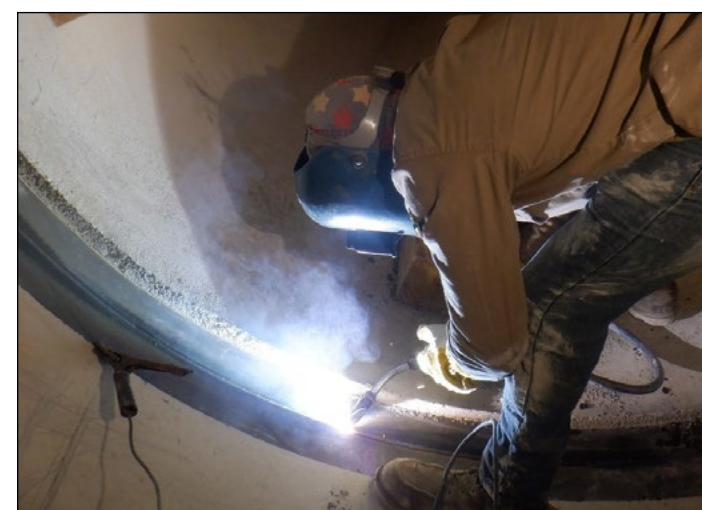
Total Parent Parcels: 517



JCC1 Coating 108-inch piping



PL19TX Delivering 84-inch tunnel pipe at FM753



PL19TX Welding 84-inch pipe joint for FM753 tunnel

M/WBE PARTICIPATION

through 03.31.2021

CONTRACT DESIGN AND CONSTRUCTION	M/WBE & HUB SUB-CONTRACTORS	CONTRACT COMMITMENT		M/WBE HUB INVOICED TO DATE		TOTAL PROJECT COMPLETED TO DATE	
		\$	%	\$	% (PER COMMITMENT)	\$	%
PROGRAM WIDE PROFESSIONAL SERVICES		\$20,396,220	23%	\$19,869,653	97%	\$85,508,052	98%
Program Management		\$6,636,154	19%	\$6,636,689	100%	\$35,124,711	100%
Conceptual Design / Environmental / Permitting		\$2,655,040	20%	\$2,827,565	106%	\$13,248,699	100%
Value Engineering		\$23,187	5%	\$23,178	100%	\$472,248	100%
Surveying and Mapping		\$3,939,250	33%	\$3,831,614	97%	\$10,947,471	92%
Geotechnical		\$3,545,179	29%	\$3,545,034	100%	\$12,026,276	100%
Corrosion Engineering Services		\$1,442,047	27%	\$764,939	53%	\$4,670,053	88%
Land, Easement Acquisition, & Support		\$1,294,859	37%	\$1,534,532	119%	\$3,433,832	99%
Studies		\$41,738	1%	\$41,717	100%	\$3,587,585	97%
Microwave System		\$818,765	35%	\$664,385	81%	\$1,997,177	85%
DESIGN		\$40,485,211	26%	\$38,087,408	94%	\$142,847,917	91%
Completed		\$28,488,898	27%	\$28,481,341	100%	\$102,696,775	99%
Active		\$10,946,375	21%	\$9,033,148	83%	\$39,582,129	75%
CH2M Hill (Ops Manual)	NDM	\$1,063,512	16%	\$850,551	80%	\$5,289,367	82%
CH2M Hill (JCC1)	JQ, Gupta, APM, HVJ, XENCO	\$2,322,170	25%	\$2,975,662	128%	\$7,645,482	82%
MWH	Garzabury, Kevin Sloan	\$364,871	28%	\$221,636	61%	\$1,025,773	78%
Black & Veatch	Texas Design	\$0	0%	\$2,100	0%	\$469,908	58%
Black & Veatch	BDS, CAS, JQ, TME	\$3,056,716	25%	\$3,023,303	99%	\$12,278,729	100%
Parsons	Criado, EPB, HVJ	\$0	#DIV/0!	\$0	0%	\$0	0%
Brown & Gay	AZB, TME, Lamb-Star, NDM	\$2,032,550	25%	\$770,635	38%	\$3,820,343	47%
HDR	AZB, Daltech, Word Wizards, Gupta	\$1,944,071	23%	\$1,067,763	55%	\$5,690,950	68%
Burns & McDonnell Trans. Mgmt.	Lamb-Star Engineering	\$162,485	18%	\$121,498	75%	\$866,643	96%
Burns & McDonnell	HVJ, JQ, Multatech	\$611,538	24%	\$542,454	89%	\$2,494,934	97%
Burns & McDonnell	Lamb-Star Engineering, LLC, Transtec Group Inc.	\$172,500	25%	\$30,465	18%	\$92,190	13%
Burns & McDonnell		\$265,900	25%	\$0	0%	\$6,188	1%
Furgo Consultants, Inc.		\$0	0%	\$0	0%	\$470,635	61%
Remaining		\$0	0%	\$0	0	\$0	0%
CONSTRUCTION / OWNER FURNISHED EQUIPMENT		\$115,091,905	16%	\$175,408,951	152%	\$696,459,327	98%
Completed		\$23,397,169	11%	\$38,680,042	165%	\$211,833,088	100%
Active		\$91,694,736	40%	\$136,728,909	149%	\$484,626,239	97%
JB3		\$15,258,538	26%	\$12,849,194	84%	\$71,211,755	94%
MWH Constructors	Statewide, Cowboy, TX Enviro, Champion, Ram Tool, Rent-a-Fence, Soto Steel, A-Star, Ike, Greystone, LKT, Accurate, Green Scaping	\$13,808,801	27%	\$11,399,274	83%	\$56,660,813	98%
Oncor Electric		\$1,449,737	2%	\$1,449,920	100%	\$4,864,888	8%
Isolux Corsan	Dyna Grid	\$0	0%	\$0	0%	\$923,119	96%
RE Monks		\$0	0%	\$0	0%	\$675,782	14%
Pentair Flow Technologies		\$0	0%	\$0	0%	\$8,087,153	72%

M/WBE PARTICIPATION

through 03.31.2021

CONTRACT DESIGN AND CONSTRUCTION	M/WBE & HUB SUB-CONTRACTORS	CONTRACT COMMITMENT		M/WBE HUB INVOICED TO DATE		TOTAL PROJECT COMPLETED TO DATE	
		\$	%	\$	% (PER COMMITMENT)	\$	%
Pipeline Section 12/13/MBR/JB4 Bypass		\$22,014,773	24%	\$22,270,126	101%	\$153,532,318	100%
Thalle Midlothian	LKT, Statewide, Granados, Desert Steel, ETTL, Glenko, A.N.A., Edwards, Buzz, Bradley-Douglas, Pinnacle	\$21,201,587	27%	\$16,449,588	78%	\$143,230,542	100%
BAR Constructors	Fraire's, DFW Aggregates, Ricochet, MMG, LKT, Brock, Garland Heating & Air, Texas Metal, Buzz, Rangel	\$813,186	8%	\$5,820,538	716%	\$10,177,546	100%
Hilco Electric		\$0	0%	\$0	0%	\$33,312	100%
Oncor Electric		\$0	0%	\$0	0%	\$90,918	100%
Pipeline Section 17		\$15,151,597	23%	\$6,962,486	46%	\$91,356,798	97%
IPL Partners	LKT, Industry Junction, Eagle Aggregate, Suncoast Res, ATS Drilling, RECS, ANA, Alliance, Ram, JC Welding, Luis Moreno	\$9,733,950	23%	\$3,861,465	40%	\$47,456,563	98%
Thalle Midlothian	Fleet Lube, Rambo Controls, AE Trucking, MKI Construction, Stome Water Management, Industry Junction, Ortega Land Clearing	\$5,417,647	24%	\$3,101,021	57%	\$43,900,235	96%
JCC1		\$17,080,697	19%	\$77,113,953	451%	\$99,022,631	94%
BAR Constructors	Industry Junction, K&A Steel, Ricochet Fuel, Ricochet Fuel, Tidy Toilets, Buzz Custom Fence	\$961,283	6%	\$18,008,980	1873%	\$18,960,214	100%
BAR Constructors	Industry Junction, K&A Steel, Ricochet Fuel, Ricochet Fuel, Tidy Toilets	\$14,011,932	23%	\$58,180,858	415%	\$58,180,857	91%
Ebara		\$0	0%	\$0	0%	\$11,680,768	202%
Lambda Construction	High Voltage	\$2,107,483	37%	\$924,115	44%	\$5,444,542	94%
Oncor Electric		\$0	0%	\$0	0%	\$4,756,250	100%
Pipeline Section 10/11		\$6,930,593	20%	\$17,533,150	253%	\$55,545,325	100%
IPL Partners	LKT, Industry Junction, Eagle Aggregate, Suncoast Res, ATS Drilling, RECS, ANA, Alliance, Ram, JC Welding, Luis Moreno	\$5,526,017	25%	\$4,027,614	73%	\$42,022,337	100%
Oncor Electric		\$0	0%	\$0	0%	\$17,452	100%
BAR Constructors	Industry Junction, VSG Trucking, Ricochet, MMG Disposal, Garland HVAC, CMC Rebar, Buzz Custom Fence, K&A Steel, Rangle Land Surveying	\$1,404,576	11%	\$13,505,536	962%	\$13,505,536	100%
Valve Packages		\$0	0%	\$0	0%	\$13,957,412	98%
CONSTRUCTION MANAGEMENT		\$18,034,362	33%	\$19,850,533	110%	\$49,693,830	92%
Completed		\$5,928,654	38%	\$5,954,412	100%	\$15,747,553	100%
Active		\$12,105,707	32%	\$13,896,121	115%	\$33,946,277	89%
CONSTRUCTION MATERIALS TESTING		\$6,610,909	51%	\$5,380,126	81%	\$10,533,432	81%
Completed		\$219,036	97%	\$219,036	100%	\$225,132	100%
Active		\$6,391,873	50%	\$5,161,090	81%	\$10,308,300	81%
ROCIP		\$900,712	3%	\$370,813	41%	\$23,117,815	71%
TOTAL		\$208,130,228	26%	\$258,967,484	124%	\$1,008,160,373	96%
LAND COST		\$0	0%	\$61,892	0%	\$78,532,928	241%
MISCELLANEOUS		\$0	0%	\$0	0%	\$3,903,305	5%
GRAND TOTAL		\$208,130,228	26%*	\$259,029,376	124%	\$1,090,596,607	96%
		M/WBE/HUB Invoiced				\$259,029,376	
		Grand Total Invoiced				\$1,090,596,607	
		* Exclusions Invoiced				\$322,358,973	
		MWBE %				33.7%	

* Denotes participation percentage excluding cost of pipe and owner furnished equipment.

PROJECT COMPONENTS

PIPELINE SEGMENTS	DESCRIPTION
Section 9	KBR Turn-Out Tee to existing Benbrook Connection Pipeline (10.6 mi. 84" dia. Pipe + 5 mi. 120" Tunnel)
Section 10	KBR Turn-Out Tee to KBR (2.4 mi. 84" dia. Pipe)
Section 11	JB4 to KBR Turn-Out Tee (10 mi. 84" dia. Pipe)
Section 12	JB4 to existing CC and RC Pipelines (2.2 mi. 108" dia. Pipe)
Section 13	MBR2 (Midlothian Balancing Reservoir) to JB4 (11 mi. 108" dia. Pipe)
Section 14	JB3 to MBR2 (Midlothian Balancing Reservoir) (14.9 mi. 108" dia. Pipe)
Section 15	JB2 to JB3 (28.5 mi 108" dia. Pipe)
Section 16	JRC1 (Joint Richland Chambers Lake Pump Station) to JB2 (12.3 mi. 96" dia. Pipe)
Section 17	Cedar Creek Connection to JB2 (11.2 mi. 108" dia. Pipe)
Section 18	JCC1 (Joint Cedar Creek Lake Pump Station) to Cedar Creek Connection (0.2 mi. 108" dia. Pipe)
Section 19	LP1 (Lake Palestine Pump Station) to Cedar Creek Connection (42.3 mi. 84" dia. Pipe)

PUMP STATIONS	DESCRIPTION
Palestine Pump Station	150 mgd with new intake
Cedar Creek Pump Station	277 mgd with new intake
Richland Chambers Pump Station	250 mgd Ultimate Design Capacity
Booster Pump Stations	Two @ 347 mgd and one @ 197 mgd (♦ one 347 mgd station - JB3)

SUPPORT FACILITIES	DESCRIPTION
Reservoirs	Three reservoirs (80 – 400 mgd) - two for booster pump stations and one for balancing. Two of the reservoirs are core projects – JB3R and MBR
Deep Tunnels	5 mi of 10' dia. tunnel @ Crowley (included in length of Section 9)
Substations & High Voltage Transmission Lines	Six substations and 4 mi. of high voltage transmission lines (♦ two substations)
Microwave Communications and SCADA System	Provides remote operations capability and system monitoring

