

MINUTES OF A MEETING OF THE BOARD OF DIRECTORS OF
TARRANT REGIONAL WATER DISTRICT
HELD ON THE 19TH DAY OF DECEMBER 2006 AT 9:30 A.M.

The call of the roll disclosed the presence of the Directors as follows:

Present
Victor W. Henderson
Hal S. Sparks III
Jack R. Stevens
Marty V. Leonard
James W. Lane

Also present were James M. Oliver, Alan Thomas, Ken Brummett, Shanna Cate, Linda Christie, JD Granger, Nancy King, David Marshall, Wayne Owen, Randy Rinon, Madeline Robson and Mike Witthaus.

Also in attendance were George Christie, General Counsel for Tarrant Regional Water District (the Water District); Lee Christie and Jared Harrell representing Pope, Hardwicke, Christie, Schell, Kelly & Ray, LLP; Jay Pritchard of Trinity Communications; Dick Fish of Save Eagle Mountain Lake; and Earl Alexander.

President Henderson convened the meeting with the assurance from management that all requirements of the "open meetings" laws had been met.

1.

All present were given the opportunity to join in reciting the Pledge of Allegiance.

2.

On a motion made by Director Stevens and seconded by Director Sparks, the Directors unanimously voted to approve the minutes from the meeting held November 21, 2006. It was accordingly ordered that such minutes be placed in the permanent files of Tarrant Regional Water District.

3.

There were no persons of the general public requesting the opportunity to address the Board of Directors.

4.

With the recommendation of management, Director Leonard moved to approve a contract with A.L.L. Electrical Contractors Inc. for electrical services in the amount of \$37.00*/\$19.00** an hour for work performed

during working hours and \$56.25*/\$28.50** an hour for overtime with a 15% markup on materials. (Journeyman*/Apprentice**) Funding for this contract is included in the 2007 Revenue Fund Budget and the FY 2007 General Fund Budget. Director Lane seconded the motion and the vote in favor was unanimous.

5.

With the recommendation of management, Director Leonard moved to approve the FY 2006/07 Trinity River Vision Authority budget in the amount of \$950,000. Director Lane seconded the motion and the vote in favor was unanimous.

6.

With the recommendation of management, Director Stevens moved to ratify Pooling Agreements for seven (7) XTO units, the Water District's net revenue interest in each unit and a plat for each unit are shown below:

1.	TRWD GANTT A #1H	.2344533	TRWD N.R.I.
2.	TRWD GANTT B #1H	.2436746	TRWD N.R.I.
3.	TRWD GANTT C #1H	.2454545	TRWD N.R.I.
4.	ROESER TRWD A #1H	.1182442	TRWD N.R.I.
5.	ROESER SOUTH A #1H	.1065166	TRWD N.R.I.
6.	ROESER TRWD B #1H	.1588181	TRWD N.R.I.
7.	ROESER TRWD S B #2H	.1694375	TRWD N.R.I.

This plat does not represent a boundary survey. Acreages shown hereon are deed called or calculated from deeds furnished by others. Monumentation shown hereon was found. Surface Location ties are shown from the location surveyed 3/15/05. The Bearing Base is "GRID", N.A.D. 27 Datum, T_x North Central Zone, Convergence is +00'06"31".6 at the Surface Location.

N.A.D. 27 DATUM
TEXAS NORTH CENTRAL ZONE
** SURFACE LOCATION TRWD GANTT A UNIT 1H WELL **
N: 471996.79
E: 1985021.22
LAT: 32°37'50".68
LONG: 97°30'58".42

** INFLECTION POINT TRWD GANTT A UNIT 1H WELL **
N: 472332.09
E: 1985096.47
LAT: 32°37'54".19
LONG: 97°30'46".99

** PENETRATION POINT TRWD GANTT A UNIT 1H WELL **
N: 472108.33
E: 1986812.67
LAT: 32°37'31".75
LONG: 97°30'39".76

** BOTTOM HOLE TRWD GANTT A UNIT 1H WELL **
N: 471244.99
E: 1988188.72
LAT: 32°37'43".24
LONG: 97°30'51".26

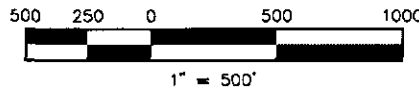
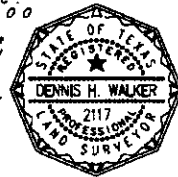
**WELL LOCATION PLAT
XTO ENERGY, INC.
TRWD GANTT A UNIT 1H
75.00 ACRE UNIT
TARRANT COUNTY, TEXAS**

WALKER & ASSOCIATES SURVEYING, INC.
TYLER, TEXAS PH: 903-534-9000

I, Dennis H. Walker, Registered Professional Land Surveyor do hereby state that this plat was prepared from a partial survey and from public record information and is true and correct to the best of my knowledge.

GIVEN UNDER MY HAND AND SEAL, this the 07th day of November, 2006.

By: _____
Dennis H. Walker
Registered Professional Land Surveyor
State of Texas No. 2117



**I LEWIS
A-287**

1	- CALLED	66.362 ACRES	TRWD
2	- CALLED	12.676 ACRES	TRWD
3	- CALLED	0.824 ACRES	STATE OF TEXAS
4	- CALLED	9.398 ACRES	TRWD
5	- CALLED	7.840 ACRES	STATE OF TEXAS
75.000 TOTAL CALLED ACRES IN UNIT & DRUG UNIT			

+00'06"31".6



**** DRIVING DIRECTIONS ****
FROM THE INTERSECTION OF 730 & PEDEN, GO EAST ON PEDEN APPROX 1 MILE TO A "Y" INTERSECTION, STAY TO THE LEFT, THIS WILL TURN INTO LIBERTY SCHOOL HOUSE ROAD, GO NORTH ON LIBERTY SCHOOL HOUSE ROAD 1/2 MILE TO GANTT ACCESS ROAD ON EAST SIDE OF ROAD GO APPROX 1400' EAST ON GANTT ACCESS ROAD TO INTERSECTION OF GANTT & STEWART, GANTT ACCESS ROAD RUNS INTO PAD.

**H. A. McNUTT
A-1062**

**D.T. FLORES
A-508**

**GREEN B. GIVENS
A-601**

**W.H. MOORE
A-1830**

**T. ROBINSON
A-1309**

SURFACE LOCATION TRWD GANTT A UNIT 1H IN THE GREEN B. GIVENS A-601 BEING 2367' FROM THE EAST LINE OF SAME BEING THE WEST LINE OF THE STATE OF TEXAS LEASE TRACT CALLED 40 ACRES LEASE N-104255 141' FROM THE NORTH LINE OF THE GREEN B. GIVENS A-601 BEING THE SOUTH LINE OF THE H.A. McNUTT SURVEY A-1062, ALSO BEING 88' FROM THE SOUTH UNIT LINE, ALSO BEING 126' FROM THE SOUTHWEST UNIT CORNER.

INFLECTION POINT TRWD GANTT A UNIT 1H IN THE H.A. McNUTT SURVEY A-1062 BEING 887' FROM THE EAST LINE OF SAME BEING THE WEST LINE OF THE D.T. FLORES SURVEY, A-508 AND 203' FROM THE SOUTH LINE OF THE H.A. McNUTT SURVEY A-1062 BEING THE NORTH LINE OF THE GREEN B. GIVENS SURVEY, A-601, ALSO BEING 320' FROM THE NORTH-WEST UNIT LINE, ALSO BEING 236' FROM THE NORTH-EAST UNIT LINE.

PENETRATION POINT TRWD GANTT A UNIT 1H IN THE GREEN B. GIVENS A-601 BEING 770' FROM THE EAST LINE OF SAME BEING THE WEST LINE OF THE D.T. FLORES SURVEY, A-508 AND 50' FROM THE NORTH LINE OF THE GREEN B. GIVENS A-601 BEING THE SOUTH LINE OF THE H.A. McNUTT SURVEY, A-1062, ALSO BEING 332' FROM THE NORTH UNIT LINE, ALSO BEING 117' FROM THE EAST UNIT LINE.

BOTTOM HOLE TRWD GANTT A UNIT 1H IN THE D.T. FLORES SURVEY A-508 BEING 142' FROM THE WEST LINE OF SAME BEING THE EAST LINE OF THE W.H. MOORE SURVEY A-1830 AND 467' FROM THE SOUTH LINE OF THE D.T. FLORES SURVEY A-508 BEING THE NORTH LINE OF THE T. ROBINSON SURVEY, A-1309, ALSO BEING 330' FROM THE EAST UNIT LINE, ALSO BEING 330' FROM THE SOUTH UNIT LINE.

Surface Location is located 4.8 Miles Northeast of Azle "AZLE" Quadrangle

This plat does not represent a boundary survey. Acreages shown hereon are deed called or calculated from deeds furnished by others. Monumentation shown hereon was found. Surface Location ties are shown from the location surveyed 3/16/05. The Bearing Base is "GRID", N.A.D. 27 Datum, Tx North Central Zone, Convergence +00'06"31"E at the Surface Location.

**** DRIVING DIRECTIONS ****
 FROM THE INTERSECTION OF 730 & PEDEN, GO EAST ON PEDEN APPROX 1 MILE TO A "Y" INTERSECTION, STAY TO THE LEFT, THIS WILL TURN INTO LIBERTY SCHOOL HOUSE ROAD, GO NORTH ON LIBERTY SCHOOL HOUSE ROAD 1/2 MILE TO GANTT ACCESS ROAD ON EAST SIDE OF ROAD GO APPROX 1400' EAST ON GANTT ACCESS ROAD TO INTERSECTION OF GANTT & STEWART, GANTT ACCESS ROAD RUNS INTO PAD.

N.A.D. 27 DATUM
 TEXAS NORTH CENTRAL ZONE
 ** SURFACE LOCATION TRWD GANTT B UNIT 1H WELL **
 N: 471068.79
 E: 1965022.62
 LAT.: 32°57'30".39
 LONG.: 97°30'58".42
 ** PENETRATION POINT TRWD GANTT B UNIT 1H WELL **
 N: 471534.18
 E: 1966186.82
 LAT.: 32°57'46".10
 LONG.: 97°30'54".59
 ** BOTTOM HOLE TRWD GANTT B UNIT 1H WELL **
 N: 489188.57
 E: 1967948.82
 LAT.: 32°57'22".90
 LONG.: 97°30'24".08

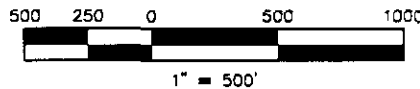
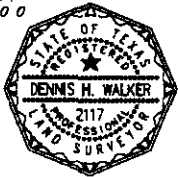
**WELL LOCATION PLAT
 XTO ENERGY, INC.
 TRWD GANTT B UNIT 1H
 83.00 ACRE UNIT
 TARRANT COUNTY, TEXAS**

WALKER & ASSOCIATES SURVEYING, INC.
 TYLER, TEXAS PH: 903-534-9000

I, Dennis H. Walker, Registered Professional Land Surveyor do hereby state that this plat was prepared from a partial survey and from public record information and is true and correct to the best of my knowledge.

GIVEN UNDER MY HAND AND SEAL, this the 13th day of November, 2008.

By: _____
 Dennis H. Walker
 Registered Professional Land Surveyor
 State of Texas No. 2117



H. A. McNUTT
 A-1062

TRWD GANTT B UNIT 1H
 SURF. LOC. ELEV = 696'

TRWD GANTT B UNIT 1H
 PENET. POINT

1 - CALLED	64.80 ACRES	TRWD
2 - CALLED	2.00 ACRES	STATE OF TEXAS
3 - CALLED	16.00 ACRES	TRWD
AT&T TOTAL CALLED ACRES IN UNIT & GRID UNIT		

D.T. FLORES
 A-508

W.H. MOORE
 A-1830

T. ROBINSON
 A-1309

GREEN B. GIVENS
 A-601

C. T. STOKES
 A-1803

XTO Energy
 TRWD Lease Tract
 Called 2449.781 Acres

STATE OF TEXAS Lease Tract
 Called 40 Acres
 LEASE: M-104235

SURFACE LOCATION TRWD GANTT B UNIT 1H IN THE GREEN B. GIVENS A-601 BEING 274' FROM THE WEST LINE OF SAME BEING THE EAST LINE OF THE C.T. STOKES SURVEY, A-1803 AND BEING THE SOUTH LINE OF THE GREEN B. GIVENS A-601 BEING THE SOUTH LINE OF THE H.A. McNUTT SURVEY, A-1062, ALSO BEING 770' FROM THE WEST UNIT LINE, ALSO BEING 140' FROM THE SOUTH UNIT LINE.

PENETRATION POINT TRWD GANTT B UNIT 1H IN THE GREEN B. GIVENS A-601 BEING 140' FROM THE WEST LINE OF SAME BEING THE EAST LINE OF THE C.T. STOKES SURVEY, A-1803 AND BEING 817' FROM THE NORTH LINE OF THE GREEN B. GIVENS A-601 BEING THE SOUTH LINE OF THE H.A. McNUTT SURVEY, A-1062, ALSO BEING 370' FROM THE NORTH UNIT LINE, ALSO BEING 330' FROM THE SOUTHWEST UNIT LINE.

BOTTOM HOLE TRWD GANTT B UNIT 1H IN THE T. ROBINSON SURVEY A-1309 BEING 1349' FROM THE WEST LINE OF SAME BEING THE EAST LINE OF THE C.T. STOKES SURVEY, A-1803 AND BEING 255' FROM THE NORTH LINE OF THE T. ROBINSON SURVEY A-1309 BEING THE SOUTH LINE OF THE W.H. MOORE SURVEY, A-1830, ALSO BEING 592' FROM THE WEST UNIT LINE, ALSO BEING 330' FROM THE SOUTH UNIT LINE.

Surface Location is located 4.8 Miles Northeast of Azle "AZLE" Quadrangle



This plat does not represent a boundary survey. Acreages shown herein are dead called or calculated from deeds furnished by others. Monumentation shown herein was found. Surface location ties are shown from the location surveyed 3/16/05. The Bearing Base is "GR10", N.A.D. 27 Datum, 1x North Central Zone, Convergence: +00°06'31"6 at the Surface Location.

**** DRAWING ORIENTATIONS ****
 FROM THE INTERSECTION OF 730 W. PEBBLE DR. EAST ON PEBBLE AVE. FOR 1/4 MI. TO A "T" INTERSECTION. STAY TO THE LEFT. THIS WILL TURN INTO LIBERTY SCHOOL HOUSE ROAD. GO NORTH ON LIBERTY SCHOOL HOUSE ROAD 1/2 MI. TO GANTT ACCESS ROAD ON EAST SIDE OF ROAD. GO APPROX. 1/4 MI. EAST ON GANTT ACCESS ROAD TO INTERSECTION OF GANTT & STOKES. GANTT ACCESS ROAD RUNS INTO TRAD.

N.A.D. 27 DATUM
 TEXAS NORTH CENTRAL ZONE
 ** SURFACE LOCATION TRWD GANTT C UNIT 1H WELL **
 N: 471836.77
 E: 1985022.47
 LAT.: 32°57'40".08
 LONG.: 97°30'58".48

** PENETRATION POINT TRWD GANTT C UNIT 1H WELL **
 N: 471898.41
 E: 1985051.39
 LAT.: 32°57'43".78
 LONG.: 97°30'58".57

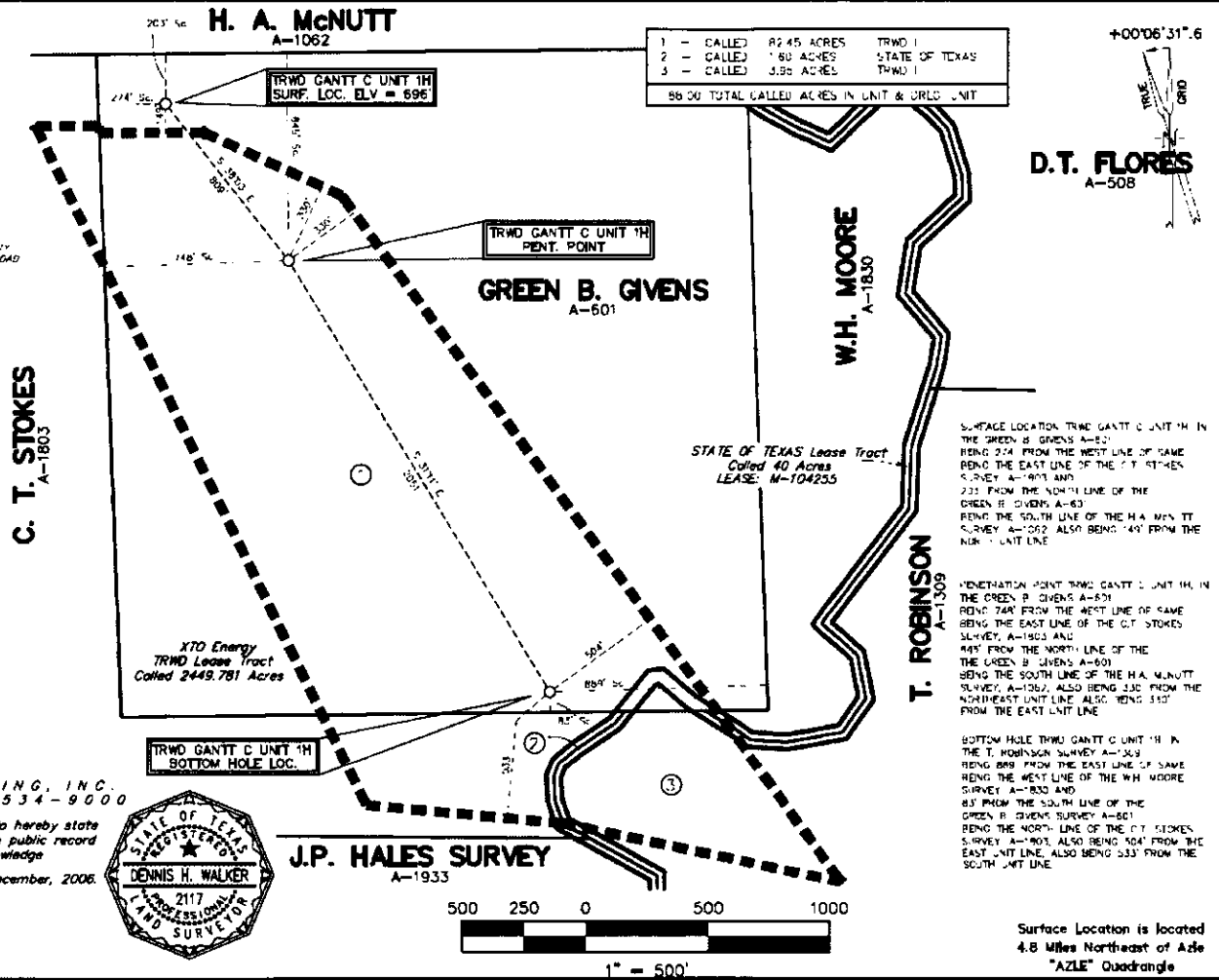
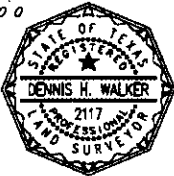
** BOTTOM HOLE TRWD GANTT C UNIT 1H WELL **
 N: 468945.00
 E: 1986383.00
 LAT.: 32°57'28".48
 LONG.: 97°30'40".11

**WELL LOCATION PLAT
 XTO ENERGY, INC.
 TRWD GANTT C UNIT 1H
 88.00 ACRE UNIT
 TARRANT COUNTY, TEXAS**

WALKER & ASSOCIATES SURVEYING, INC.
 TYLER, TEXAS PH: 903-534-9000

I, Dennis H. Walker, Registered Professional Land Surveyor do hereby state that this plat was prepared from a partial survey and from public record information and is true and correct to the best of my knowledge. GIVEN UNDER MY HAND AND SEAL, this the 05th day of December, 2006.

By: _____
 Dennis H. Walker
 Registered Professional Land Surveyor
 State of Texas No. 2117



Surface Location is located 4.8 Miles Northeast of Azle "AZLE" Quadrangle

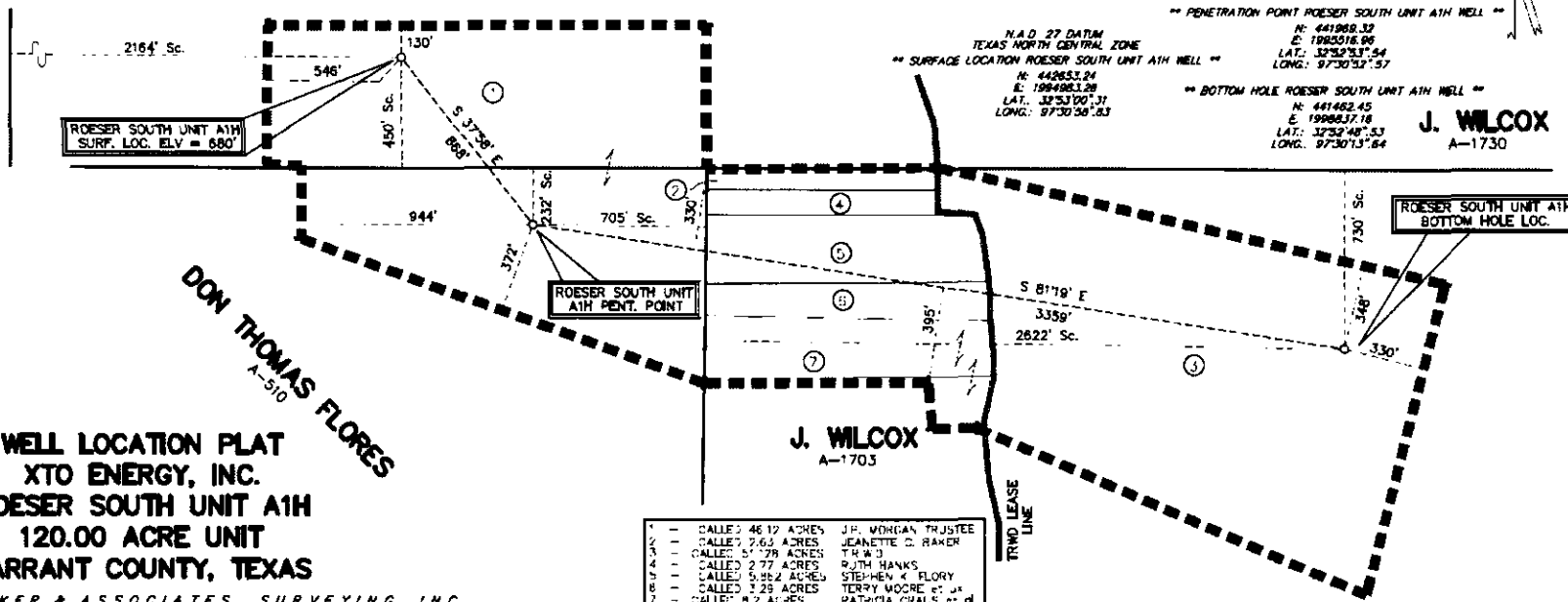
This plot does not represent a boundary survey. Acreages shown hereon are deed called or calculated from deeds furnished by others. Manifestation shown hereon was found. Surface Location ties are shown from the location surveyed 10/10/06. The Bearing Base is "GR D", N.A.D. 27 Datum, Tx North Central Zone, Convergence: +00°09'22" 65 at the Surface Location.

SURFACE LOCATION ROESER SOUTH UNIT A1H WELL IN THE J. WILCOX SURVEY, A-1730 BEING 464' FROM THE SOUTH LINE OF SAME ALSO BEING THE NORTH LINE OF THE DON THOMAS FLORES SURVEY, A-510 AND BEING 2164' FROM THE WEST LINE OF THE J. WILCOX SURVEY, A-1730, SAME BEING THE EAST LINE OF THE DON THOMAS FLORES, A-510, SAID POINT BEING 130' FROM THE SOUTH UNIT LINE, AND BEING 146' FROM THE WEST UNIT LINE.

PENETRATION POINT ROESER SOUTH UNIT A1H WELL IN THE DON THOMAS FLORES, A-510 BEING 212' FROM THE NORTH LINE OF SAME ALSO BEING THE SOUTH LINE OF THE J. WILCOX SURVEY, A-1730, AND BEING 705' FROM THE EAST LINE OF THE DON THOMAS FLORES, A-510, SAME BEING THE WEST LINE OF THE J. WILCOX SURVEY, A-1730, SAID POINT BEING 372' FROM THE SOUTH UNIT LINE, SAID POINT ALSO BEING 444' FROM THE WEST UNIT LINE.

BOTTOM HOLE ROESER SOUTH UNIT A1H WELL IN THE J. WILCOX SURVEY, A-1730 BEING 730' FROM THE NORTH LINE OF SAME ALSO BEING THE SOUTH LINE OF THE J. WILCOX SURVEY, A-1730, AND BEING 2522' FROM THE WEST LINE OF THE J. WILCOX SURVEY, A-1730, SAME BEING THE EAST LINE OF THE DON THOMAS FLORES, A-510, SAID POINT BEING 141' FROM THE NORTH UNIT LINE, SAID POINT ALSO BEING 330' FROM THE EAST UNIT LINE.

+00°09'22" 65



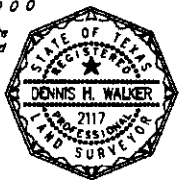
**WELL LOCATION PLAT
XTO ENERGY, INC.
ROESER SOUTH UNIT A1H
120.00 ACRE UNIT
TARRANT COUNTY, TEXAS**

WALKER & ASSOCIATES SURVEYING, INC.
TYLER, TEXAS PH: 903-534-9000

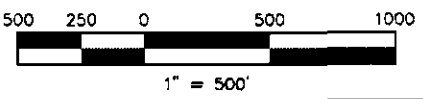
I, Dennis H Walker, Registered Professional Land Surveyor do hereby state that this plat was prepared from a partial survey and from public record information and is true and correct to the best of my knowledge.

GIVEN UNDER MY HAND AND SEAL, this the 10th day of October, 2006.

By: _____
Dennis H Walker
Registered Professional Land Surveyor
State of Texas No. 2117



- 1 - CALLED 46.12 ACRES J.P. MORGAN TRUSTEE
 - 2 - CALLED 7.63 ACRES JEANETTE G. BAKER
 - 3 - CALLED 51.778 ACRES T.H. & D.
 - 4 - CALLED 2.77 ACRES RUTH HANKS
 - 5 - CALLED 5.862 ACRES STEPHEN K. FLORY
 - 6 - CALLED 3.25 ACRES TERRY MOORE et al
 - 7 - CALLED 8.2 ACRES PATRICIA CRAIG et al
- 120.000 TOTAL CALLED ACRES IN UNIT & "ALG" UNIT



*** ORIGINAL LOCATION ***
FROM THE INTERSECTION OF JACKSON'S HWY & STEWART ST
GO EAST ON STEWART FOR 0.24 MILES TO PARK ST
GO SOUTH ON PARK ST FOR 1.52 MILES TO LEASE ROAD
TAKE LEASE ROAD 0.24 MILES NORTH TO WEL

Surface Location is located
1.8 Miles Southeast of AZLE
"AZLE" Quadrangle

This plot does not represent a boundary survey. Acreages shown hereon are deed called or calculated from deeds furnished by others. Monumentation shown hereon was found. Surface Location ties are shown from the location surveyed 10/06. The Bearing Base is "CRJ", N.A.D. 27 Datum, Texas North Central Zone, Convergence: +00°09'22".65 at the Surface Location.

ROESER TRWD B# 1H SURF. LOC. ELEV. = 680'

N.A.D. 27 DATUM
TEXAS NORTH CENTRAL ZONE
** SURFACE LOCATION ROESER TRWD B# 1H WELL **
N: 441500.34
E: 1985188.58
LAT.: 32°52'49".69
LONG.: 97°30'58".88

** PENETRATION POINT ROESER TRWD B# 1H WELL **
N: 440892.53
E: 1986184.72
LAT.: 32°52'43".87
LONG.: 97°30'44".98

** BOTTOM HOLE ROESER TRWD B# 1H WELL **
N: 438711.14
E: 1989601.22
LAT.: 32°52'31".20
LONG.: 97°30'04".88

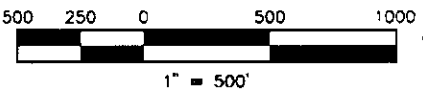
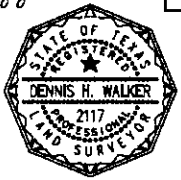
WELL LOCATION PLAT
XTO ENERGY, INC.
ROESER TRWD UNIT B# 1H
110.00 ACRE UNIT
TARRANT COUNTY, TEXAS

WALKER & ASSOCIATES SURVEYING, INC.
TYLER, TEXAS PH: 903-534-9000

I, Dennis H. Walker, Registered Professional Land Surveyor do hereby state that this plat was prepared from a partial survey and from public record information and is true and correct to the best of my knowledge.

GIVEN UNDER MY HAND AND SEAL, this the 30th day of November, 2006.

By: _____
Dennis H. Walker
Registered Professional Land Surveyor
State of Texas No. 2117



1 - CALLED 43.12 ACRES J.F. MORGAN TRUSTEE
2 - CALLED 69.88 ACRES T.R.W.D. IV
110.00 TOTAL CALLED ACRES IN UNIT & DRUG UNIT

J. WILCOX
A-1710

J. WILCOX
A-1730

SURFACE LOCATION ROESER TRWD B# 1H WELL IN THE DON THOMAS FLORES, A-510 BEING 822' FROM THE NORTH LINE OF SAID ALSO BEING THE SOUTH LINE OF THE J. WILCOX SURVEY, A-1710, AND BEING 1048' FROM THE EAST LINE OF THE DON THOMAS FLORES, A-510, SAID BEING THE WEST LINE OF THE J. WILCOX A-1730, SAID POINT BEING 673' FROM THE NORTHWEST UNIT CORNER, AND BEING 1109' FROM THE SOUTHWEST UNIT CORNER.

PENETRATION POINT ROESER TRWD B# 1H WELL IN THE DON THOMAS FLORES, A-510 BEING 1207' FROM THE NORTH LINE OF SAID ALSO BEING THE SOUTH LINE OF THE J. WILCOX SURVEY, A-1710, AND BEING 44' FROM THE EAST LINE OF THE DON THOMAS FLORES, A-510, SAID BEING THE WEST LINE OF THE J. WILCOX A-1730, SAID POINT BEING 334' FROM THE NORTH UNIT LINE, SAID POINT ALSO BEING 334' FROM THE WEST UNIT LINE.

BOTTOM HOLE ROESER TRWD B# 1H WELL IN THE J. WILCOX SURVEY, A-1730, BEING 2479' FROM THE NORTH LINE OF SAID ALSO BEING THE SOUTH LINE OF THE J. WILCOX SURVEY, A-1710, AND BEING 3405' FROM THE WEST LINE OF THE J. WILCOX SURVEY, A-1730, SAID BEING THE EAST LINE OF THE DON THOMAS FLORES, A-510, SAID POINT BEING 330' FROM THE NORTH UNIT LINE, SAID POINT ALSO BEING 330' FROM THE EAST UNIT LINE.

+00°09'22".65



FROM THE INTERSECTION OF JACKSON HWY & STEWART ST GO EAST ON STEWART FOR 2.04 MILES TO PARK ST GO SOUTH ON PARK ST FOR 1.81 MILES TO PARK ROAD THE LEAST ROAD 1.04 MILES NORTH OF ROAD

Surface Location is located 1.8 Miles Southeast of AZLE "AZLE" Quadrangle

This plat does not represent a boundary survey. Acreages shown hereon are deed called or calculated from deeds furnished by others. Monumentation shown hereon was found. Surface Location ties are shown from the location surveyed 10/06. The Bearing Base is "GRID", N.A.D. 27' Datum, Tx North Central Zone, Convergence: +00°09'22" 65 at the Surface Location.

— CALLED 51.56 ACRES, J.P. MORGAN TRUSTEE
 2 — CALLED 108.44 ACRES TRWD IV
 160.00 TOTAL CALLED ACRES IN UNIT & BRLG. UNIT

**** DRIVING DIRECTION ****
 FROM THE INTERSECTION OF JACKSON HWY & STEWART ST
 GO EAST ON STEWART FOR 0.04 MILES TO BANK 51
 GO SOUTH ON PARK ST FOR 1.12 MILES TO LEASE ROAD
 TAKE LEASE ROAD 7.14 MILES NORTH TO PAD

+00°09'22".65

J. WILCOX
 A-1730



SURFACE LOCATION ROESER TRWD S UNIT B #2H WELL IN THE DON THOMAS FLORES, A-510 BEING 652' FROM THE NORTH LINE OF SAME ALSO BEING THE SOUTH LINE OF THE J. WILCOX SURVEY, A-1730, AND BEING 1051' FROM THE EAST LINE OF THE DON THOMAS FLORES, A-510, SAME BEING THE WEST LINE OF THE J. WILCOX A-1730, SAID POINT BEING 141' FROM THE NORTH UNIT LINE AND BEING 582' FROM THE WEST UNIT CORNER.

PENETRATION POINT ROESER TRWD S UNIT B #2H WELL IN THE DON THOMAS FLORES, A-510 BEING 244' FROM THE NORTH LINE OF SAME ALSO BEING THE SOUTH LINE OF THE J. WILCOX SURVEY, A-1730, AND BEING 746' FROM THE EAST LINE OF THE DON THOMAS FLORES, A-510, SAME BEING THE WEST LINE OF THE J. WILCOX A-1730, SAID POINT BEING 330' FROM THE SOUTH UNIT LINE, SAID POINT ALSO BEING 872' FROM THE SOUTHWEST UNIT CORNER.

DON THOMAS FLORES
 A-510

ROESER TRWD S UNIT B #2H
 A1H PENT. POINT

BOTTOM HOLE ROESER TRWD S UNIT B #2H WELL IN THE J. WILCOX SURVEY, A-1703 BEING 1216' FROM THE SOUTH LINE OF SAME ALSO BEING THE NORTH LINE OF THE J. WILCOX SURVEY, A-1726, AND BEING 2611' FROM THE EAST LINE OF THE J. WILCOX SURVEY, A-1703, SAME BEING THE WEST LINE OF THE BERNADINO SAMORA A-1384, SAID POINT BEING 130' FROM THE SOUTH UNIT LINE, SAID POINT ALSO BEING 330' FROM THE EAST UNIT LINE.

J. WILCOX
 A-1703

BERNADINO SAMORA
 A-1384

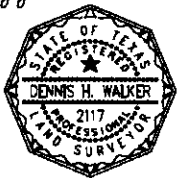
N.A.D. 27 DATUM
 TEXAS NORTH CENTRAL ZONE
 ** SURFACE LOCATION ROESER TRWD S UNIT B #2H WELL **
 N: 441330.51
 E: 1993163.43
 LAT.: 32°32'49".89
 LONG.: 97°30'56".89
 ** PENETRATION POINT ROESER TRWD S UNIT B #2H WELL **
 N: 439760.97
 E: 1993450.39
 LAT.: 32°32'31".88
 LONG.: 97°30'53".33
 ** BOTTOM HOLE ROESER TRWD S UNIT B #2H WELL **
 N: 438382.19
 E: 1993926.08
 LAT.: 32°32'18".04
 LONG.: 97°30'12".58

WELL LOCATION PLAT
XTO ENERGY, INC.
ROESER TRWD S UNIT B #2H
160.00 ACRE UNIT
TARRANT COUNTY, TEXAS

WALKER & ASSOCIATES SURVEYING, INC.
 TYLER, TEXAS PH: 903-534-9000

I, Dennis H. Walker, Registered Professional Land Surveyor do hereby state that this plat was prepared from a partial survey and from public record information and is true and correct to the best of my knowledge.
 GIVEN UNDER MY HAND AND SEAL, this the 30th day of November, 2006.

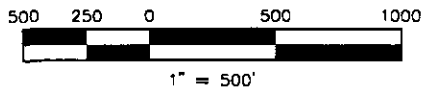
By: _____
 Dennis H. Walker
 Registered Professional Land Surveyor
 State of Texas No. 2117



J. WILCOX
 A-1726

D T FLORES
 A-509

Surface Location is located 1.8 Miles Southeast of AZLE "AZLE" Quadrangle



Director Sparks seconded the motion and the vote in favor was unanimous.

7.

With the recommendation of management, Director Henderson moved to appoint representatives for the following four (4) TIF committees:

TIF 9 (Trinity River Vision) – Jack Stevens
TIF 10 (Cabela’s) – Linda Christie
TIF 11 (Southwest Parkway/121) – Hal Sparks
TIF 12 (East Berry Street Corridor) – Linda Christie

RESOLUTION REAPPOINTING REPRESENTATIVES TO TAX INCREMENT REINVESTMENT ZONES 9, 10 and 11 AND APPOINTING A REPRESENTATIVE TO TAX INCREMENT REINVESTMENT ZONE 12

WHEREAS, Tarrant Regional Water District participates in the Trinity River Vision, Cabela’s, and Southwest Parkway TIFs created by the City of Fort Worth to provide tax increment financing for infrastructure development to support economic development in Fort Worth; and

WHEREAS, the District desires to reappoint Jack Stevens as the District’s representative to Tax Increment Reinvestment Zone 9 (Trinity River Vision); and

WHEREAS, the District desires to reappoint Linda Christie as the District’s representative to Tax Increment Reinvestment Zone 10 (Cabela’s); and

WHEREAS, the District desires to reappoint Hal Sparks as the District’s representative to Tax Increment Reinvestment Zone 11 (Southwest Parkway/121); and

WHEREAS, the District desires to participate in the East Berry Street Corridor TIF created by the City of Fort Worth to provide tax increment financing to support economic redevelopment in southeast Fort Worth by naming Linda Christie as the District’s representative.

NOW, THEREFORE, BE IT RESOLVED by the Board of Directors of the Tarrant Regional Water District that Jack Stevens shall serve as a board representative of the Tax Increment Reinvestment Zone 9 (Trinity River Vision) until such time as another representative is named by the District’s Board of Directors; that Linda Christie shall serve as a board representative of the Tax Increment Reinvestment Zone 10 (Cabela’s) until such time as another representative is named by the District’s Board of Directors; that Hal Sparks shall serve as a board representative of the Tax Increment Reinvestment Zone 11 (Southwest Parkway/121) until such time as another representative is named by the District’s Board of Directors; and that Linda Christie shall serve as a board representative of the Tax Increment Reinvestment Zone 12 (East Berry Street Corridor) until such time as another representative is named by the District’s Board of Directors.

PASSED, APPROVED AND ADOPTED THIS 19th DAY OF
DECEMBER 2006.

DISTRICT

TARRANT REGIONAL WATER

BY: Victor W. Henderson
Victor W. Henderson, President
Board of Directors

ATTEST:

Jack R. Stevens, Secretary

In addition, Director Henderson designated an Administrative Committee consisting of Director Henderson, Director Leonard, and James M. Oliver to review and appoint TIF committee representatives. Director Sparks seconded the motion and the vote in favor was unanimous.

8.

The Board was updated on the Water District's communication and conservation efforts.

9.

There being no further business before the Board of Directors, the meeting was adjourned.

Victor W. Henderson
President

Jack R. Stevens
Secretary