

MINUTES OF A MEETING OF THE BOARD OF DIRECTORS OF  
TARRANT REGIONAL WATER DISTRICT  
HELD ON THE 16<sup>th</sup> DAY OF MAY 2006 AT 9:30 A.M.

---

The call of the roll disclosed the presence of the Directors as follows:

Present  
Victor W. Henderson  
Hal S. Sparks III  
Jack R. Stevens  
Gina Puente-Brancato

Also present were, James M. Oliver, Alan Thomas, Norman Ashton, Ken Brummett, Lisa Cabrera, Steve Christian, Linda Christie, Wesley Cleveland, JD Granger, Nancy King, Wayne Owen, Madeline Robson, Sandy Swinnea, Ed Weaver and Mike Witthaus.

Also in attendance were George Christie, General Counsel for Tarrant Regional Water District (the Water District); Lee Christie representing Pope, Hardwicke, Christie, Harrell, Schell & Kelly, LLP; Lee Freese, Ron Lemons, and Rusty Gibson of Freese and Nichols, Inc.; Bob Smith and Dan Buhman of KBR; Scott Streater representing Fort Worth Star Telegram; Dick Fish of Save Eagle Mountain Lake; Kevin Patrick of Patrick, Miller and Kropf; Marty Leonard and Earl Alexander.

President Henderson convened the meeting with the assurance from management that all requirements of the "open meetings" laws had been met.

1.

On a motion made by Director Stevens and seconded by Director Puente-Brancato, the Directors unanimously voted to approve the minutes from the meeting held April 18, 2006. It was accordingly ordered that the minutes of this meeting be placed in the permanent files of the Water District.

2.

Dick Fish reported that the Bass Pro Tournament is scheduled on Eagle Mountain Lake and Lake Benbrook with a top prize of \$250,000.

3.

With the recommendation of management, Director Stevens moved to approve a contract with Bar Constructors Inc. for construction of the Eagle Mountain Connection Pipeline Contract A which runs from Lake Benbrook to the future balancing reservoir north of West Point Blvd. for the lowest bid of \$43,725,696. Funding for this contract is included in the 2006 Bond Issue. Director Puente-Brancato seconded the motion and the vote in favor was unanimous.

4.

With the recommendation of management, Director Puente-Brancato moved to reject the low bid of \$51,000,000 from Oscar Renda Contracting Inc. for the Eagle Mountain Connection Contract B and that this contract be re-bid with the installation of 84" pipe from the reservoir at West Point Blvd. to Eagle Mountain Lake, but without the balancing reservoir. Director Sparks seconded the motion and the vote in favor was unanimous.

5.

With the recommendation of management, Director Puente-Brancato moved to adopt the Investment Policy and Strategies dated May 16, 2006.

**RESOLUTION  
OF  
THE BOARD OF DIRECTORS OF  
TARRANT REGIONAL WATER DISTRICT  
REVIEWING AND RECORDING CHANGES MADE TO THE DISTRICT'S  
INVESTMENT POLICY AND INVESTMENT STRATEGIES**

WHEREAS, TARRANT REGIONAL WATER DISTRICT ("the District") is a political subdivision of the State of Texas, created under authority of Article XVI, § 59 of the Texas Constitution; and

WHEREAS, the District as a political subdivision of the State of Texas has legal authority to invest local funds (which are public funds in the custody of the District that are not required by law to be deposited in the State treasury and that the District has legal authority to invest); and

WHEREAS, TEX. GOV'T CODE ANN. § 2256, Subchapter A, requires the District, as a political subdivision, to adopt rules governing the investment of the local funds of the District and to specify the scope of authority of officers and employees of the District that are designated to invest local funds; and

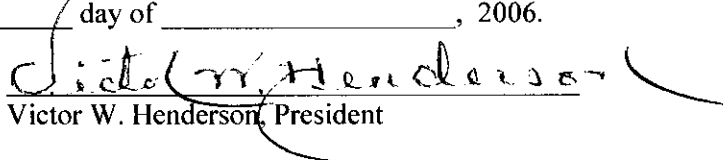
WHEREAS, the District has heretofore adopted a written Investment Policy governing the investment of local funds; and

WHEREAS, the District has heretofore adopted a written Resolution designating the Investment Officers of the District in compliance with the requirement of TEX. GOV'T CODE ANN. § 2256, Subchapter A, authorizing such persons to deposit, withdraw, invest, transfer and manage in any other manner such funds;

NOW, THEREFORE, BE IT RESOLVED BY THE BOARD OF DIRECTORS OF TARRANT REGIONAL WATER DISTRICT that notice is hereby given that the Board of Directors has on this date reviewed the District's investment policy and investment strategies. All changes made to either the District's investment policy or investment strategies following such review are as set forth herein below:

None

Passed and approved this \_\_\_\_\_ day of \_\_\_\_\_, 2006.

  
Victor W. Henderson, President

ATTEST:

\_\_\_\_\_  
Jack R. Stevens, Secretary

Director Stevens seconded the motion and the vote in favor was unanimous.

6.

The agenda item for a resolution and contract amendment for the collection of delinquent property taxes was tabled.

7.

With the recommendation of management, Director Stevens moved to approve a contract with Maez Security Consultants for the design of an integrated security system at a cost, not to exceed \$82,550 plus travel expenses of \$5,000 - \$6,000. Funding for this contract is budgeted in the 2006 Bond Issue. Director Sparks seconded the motion and the vote in favor was unanimous.

8.

With the recommendation of management, Director Sparks moved to approve a contract with Roylan Buoy Inc. to replace buoys at various points on Cedar Creek and Richland-Chambers reservoirs for the low bid of \$20,911 with an anticipated additional cost of \$7,000 for connecting hardware and cables for a total expenditure of \$27,911. Funding for this contract is budgeted in the FY 2006 Revenue Fund Budget. Director Stevens seconded the motion and the vote in favor was unanimous.

9.

With the recommendation of management, Director Sparks moved to approve the purchase of one (1) Three-Quarter-Ton Quad Cab 4WD Pickup to be assigned to the Engineering Department via Interlocal Agreement (State of Texas) in accordance with Texas Government Code 791.0225 from Dallas Dodge in the amount of \$21,899 with outfitting costs of \$750 for a total expenditure of \$22,649. Funding for this purchase is the result of an insurance reimbursement. Director Puente-Brancato seconded the motion and the vote in favor was unanimous.

10.

With the recommendation of management, Director Sparks moved to approve the purchase of aerial fertilization at Cedar Creek and Richland-Chambers dams for the low bid of \$12,806.10 submitted by M & M Air Service. Funding for this purchase is budgeted in the FY 2006 Revenue Fund Budget. Director Puente-Brancato seconded the motion and the vote in favor was unanimous.

11.

With the recommendation of management, Director Puente-Brancato moved to approve the purchase of one (1) All Terrain Six-Wheel Drive vehicle to be assigned to the Fort Worth fleet for use by the Engineering Department and the Operations Department for the low bid of \$10,979.98 submitted by Polaris Sales Inc. Funding for this purchase is budgeted in the FY 2006 Revenue Fund Budget. Director Sparks seconded the motion and the vote in favor was unanimous.

12.

With the recommendation of management, Director Stevens moved to approve a contract with Camp, Dresser & McKee Inc. for professional engineering services related to the Richland-Chambers (RC1) Harmonic Mitigation Project in the amount of \$30,000. Funding for this contract is budgeted in the FY 2006 Revenue Fund Budget. Director Puente-Brancato seconded the motion and the vote in favor was unanimous.

13.

With the recommendation of management, Director Puente-Brancato moved to approve a contract with Pressure Pipe Inspection Company to conduct the acoustic inspection of the conduits at the balancing reservoirs to determine if there is a leak at a cost not to exceed \$30,000. Funding for this contract is budgeted in the FY 2006 Revenue Fund Budget. Director Stevens seconded the motion and the vote in favor was unanimous.

14.

The President and presiding officer next called an executive session at 10:48 a.m. under Chapter 551.071 of the Government Code to consider pending or contemplated litigation – threatened litigation regarding Richland-Chambers High-Capacity Expansion Project, Clapp lawsuit, and Joe Eversole dba Best One Oil Company litigation; and under Chapter 551.072 to consider real property issues – Eagle Mountain Connection Project, Conveyance of Land on Fort Worth Floodway, Remediation of Riverbend Levee and Evaluation of Water Rights; and oil and gas leases – Oil and Gas Lease and Pooling Agreement for Panagopoulos Unit #1H Well, Pooling Agreement for XTO Manning-TRWD Units #1H, #2H and #3H, and Pooling Agreement for Bahan Gas Unit.

15.

Upon completion of the executive session at 12:34 p.m., the President reopened the meeting.

16.

With the recommendation of management, Director Sparks moved to approve a contract with KBR and Patrick, Miller & Kropf to perform an evaluation of water supply issues for an amount not to exceed \$797,647. Funding for this contract is budgeted in the FY 2006 Revenue Fund Budget. Director Stevens seconded the motion and the vote in favor was unanimous.

17.

The agenda item for a resolution to convey two tracts of land to Tarrant County College was tabled.

18.

With the recommendation of management, Director Sparks moved to approve a contract with Freese and Nichols to develop measures required to remediate the Riverbend Levee and internal drainage system to meet original design standards and perform as required to protect the development at a cost not to exceed \$18,700. Funding for this contract is budgeted in the FY 2006 General Fund Budget. Director Stevens seconded the motion and the vote was in favor with Director Puente-Brancato abstaining.

19.

With the recommendation of management, Director Sparks moved to approve a lease with XTO Energy Inc., as the highest and best bidder with a bid of \$8,226.00, 25 percent royalty, three (3) year primary term for the Water District's mineral interest in 5.484 acres and to approve the Water District's participation in the Panagopoulos Unit 1H well as shown on Exhibit A.

This plat does not represent a boundary survey  
 Acreages shown herein are dead called or  
 calculated from deeds furnished by others  
 Monumentation shown herein was found  
 Surface Location ties are shown from the  
 location surveyed 7/16/05  
 The Bearing Base is "GRID", N.A.D 27' Datum,  
 1x North Central Zone, Convergence: +32'37"24" 9  
 at the Surface Location.

SURFACE LOCATION PANAGOPOULOS 1H WELL,  
 IN THE SHELBY CO. SCHOOL LANDS, A-1375  
 BEING 8234' FROM THE NORTH LINE OF SAME  
 AND ALSO BEING THE SOUTH LINE OF THE  
 STROCKLAND SURVEY, A-1378, AND BEING  
 5057' FROM THE EAST LINE OF THE  
 SHELBY CO. SCHOOL LANDS, A-1375  
 BEING THE WEST LINE OF THE JACOB PRICKETT  
 SURVEY, A-1225, ALSO BEING 1531' FROM  
 THE SOUTH UNIT LINE AND BEING 507' FROM  
 THE EAST UNIT LINE

PENETRATION POINT LOC PANAGOPOULOS 1H WELL  
 IN THE SHELBY CO. SCHOOL LANDS, A-1375  
 BEING 5434' FROM THE NORTH LINE OF SAME  
 AND ALSO BEING THE SOUTH LINE OF THE  
 JOHN COLLETT SURVEY, A-261, AND BEING  
 5769' FROM THE EAST LINE OF THE  
 SHELBY CO. SCHOOL LANDS, A-1375  
 BEING THE WEST LINE OF THE JACOB PRICKETT  
 SURVEY, A-1225, ALSO BEING 838' FROM  
 THE WEST UNIT LINE AND BEING 1095'  
 FROM THE UNIT CORNER

**SHELBY CO. SCHOOL LANDS**  
 A-1375

N.A.D. 27 DATUM  
 TEXAS NORTH CENTRAL ZONE  
 \*\* SURFACE LOCATION PANAGOPOULOS 1H WELL \*\*  
 N: 353208.82  
 E: 2078872.40  
 LAT.: 32°38'54".09  
 LONG.: 97°15'00".83

\*\* PENETRATION POINT PANAGOPOULOS 1H WELL \*\*  
 N: 358044.00  
 E: 2078182.00  
 LAT.: 32°38'42".06  
 LONG.: 97°15'08".22

\*\* BOTTOM HOLE PANAGOPOULOS 1H WELL \*\*  
 N: 358407.00  
 E: 2078001.00  
 LAT.: 32°38'05".74  
 LONG.: 97°15'13".35

BOTTOM HOLE LOC PANAGOPOULOS 1H WELL,  
 IN THE SHELBY CO. SCHOOL LANDS, A-1375  
 BEING 3044' FROM THE NORTH LINE OF SAME  
 AND ALSO BEING THE SOUTH LINE OF THE  
 JOHN COLLETT SURVEY, A-261, AND BEING  
 6132' FROM THE EAST LINE OF THE  
 SHELBY CO. SCHOOL LANDS, A-1375  
 BEING THE WEST LINE OF THE JACOB PRICKETT  
 SURVEY, A-1225, ALSO BEING 347' FROM  
 THE WEST UNIT LINE AND 694' FROM  
 THE NORTH UNIT LINE

**WELL LOCATION PLAT**  
**XTO ENERGY INC.**  
**PANAGOPOULOS 1H**  
**313.4653 ACRE UNIT**  
**TARRANT COUNTY, TEXAS**

1000 500 0 1000 2000

1" = 1000'

WALKER & ASSOCIATES SURVEYING, INC.  
 TYLER, TEXAS PH: 903-534-9000

I, Dennis H. Walker, Registered Professional Land Surveyor do hereby state  
 that this plat was prepared from a partial survey and from public record  
 information and is true and correct to the best of my knowledge.

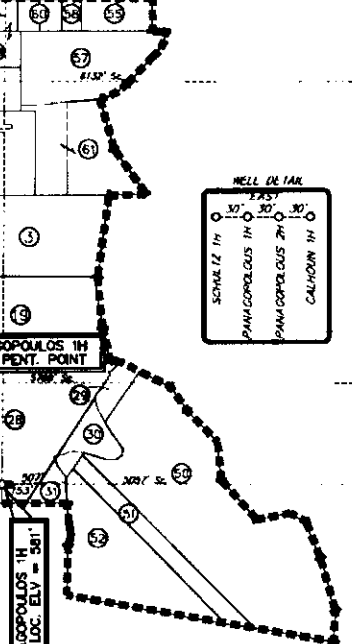
GIVEN UNDER MY HAND AND SEAL, this the 8th day of August, 2005.

By: \_\_\_\_\_  
 Dennis H. Walker  
 Registered Professional Land Surveyor  
 State of Texas No. 2117



Surface Location is located  
 2.6 Miles Northeast of BURLESON  
 "BURLESON" Quadrangle

1	- CALLED	26.108 ACRES	BILIE B MOSIES TRUSTEE
2	- CALLED	2.00 ACRES	JAMES DUNNAGAN
3	- CALLED	18.02 ACRES	HOWARD L INORAHAM
4	- CALLED	9.6500 ACRES	ROY E BEAN et ux
5	- CALLED	7087 ACRES	CITY OF FORSET HILL TX
6	- CALLED	5.00 ACRES	LARRY DENNIS et ux
7	- CALLED	5.00 ACRES	DONALD E CARTER et ux
8	- CALLED	1.45426 ACRES	SUE W ALLEN
9	- CALLED	0.54184 ACRES	ROBERT KING et ux
10	- CALLED	2.15 ACRES	MELBA WORKMAN
11	- CALLED	0.87 ACRES	ANN SHUE
12	- CALLED	3.20 ACRES	RICHARD A BROWN
13	- CALLED	5.028 ACRES	PATH-GIA HUEGERICH
14	- CALLED	3.57 ACRES	CECIL RAY PERKINS
15	- CALLED	0.29 ACRES	JAMES DUNNAGAN
16	- CALLED	5.119 ACRES	HARVEY C BACK et ux
17	- CALLED	1.00 ACRES	ELLA RUTH HICKS
18	- CALLED	1.00 ACRES	ELLA RUTH HICKS
19	- CALLED	20.8 ACRES	ELLA RUTH HICKS
20	- CALLED	0.47 ACRES	SETH S BACK et ux
21	- CALLED	0.910 ACRES	KATHY LEWIS
22	- CALLED	0.118 ACRES	DARREL BERG
23	- CALLED	0.2954 ACRES	DARREL BERG
24	- CALLED	0.407 ACRES	TAMMY BAUER et ux
25	- CALLED	1.296 ACRES	BILLY FIELD et ux
26	- CALLED	0.8478 ACRES	BILLY FIELD et ux
27	- CALLED	1.32443 ACRES	BILLY FIELD et ux
28	- CALLED	28.724 ACRES	CHRIS PANAGOPOULOS
29	- CALLED	0.317 ACRES	CHRIS PANAGOPOULOS
30	- CALLED	2.530 ACRES	CHRIS PANAGOPOULOS
31	- CALLED	1.477 ACRES	CHRIS PANAGOPOULOS
32	- CALLED	4.05 ACRES	TAMMY BAUER et ux
33	- CALLED	1.040 ACRES	MICHAEL REZINHOFF
34	- CALLED	3.537 ACRES	BETTY BRINK
35	- CALLED	1.0 ACRES	LOIS LEMSH



36	- CALLED	5.31 ACRES	BETTY R ROARK
37	- CALLED	2.01 ACRES	ROY E BARBER
38	- CALLED	3.257 ACRES	BETTY BRINK
39	- CALLED	5.4245 ACRES	LOIS CHRISTINE LEMSH
40	- CALLED	1.0 ACRES	WARRY BRANDT
41	- CALLED	3.41 ACRES	WILLIAM J SCHULTZ et ux
42	- CALLED	1.15 ACRES	JAMES DUNNAGAN
43	- CALLED	4.924 ACRES	WILLIAM J SCHULTZ et ux
44	- CALLED	6.126 ACRES	WILLIAM J SCHULTZ et ux
45	- CALLED	3.874 ACRES	WILLIAM J SCHULTZ et ux
46	- CALLED	19.04 ACRES	LUB ENTERPRISES, LLC
47	- CALLED	0.96 ACRES	LUCY VON FARAM 1/4 Int NANCY L GARRISON 1/4 Int DAVID E FARAM 1/4 Int STEVO D FARAM 1/4 Int
48	- CALLED	11.510 ACRES	CHARLES T WEBB
49	- CALLED	0.561 ACRES	CITY OF FOREST HILL
50	- CALLED	38.72 ACRES	JOYCE CALHOUN
51	- CALLED	5.484 ACRES	TRWD
52	- CALLED	15.55 ACRES	JOYCE CALHOUN
53	- CALLED	1.183 ACRES	CHRIST CHAPEL BAP. CHURCH
54	- CALLED	0.0688 ACRES	CLOYE E. STRINGER et ux
55	- CALLED	3.791 ACRES	JAM REAL PROPERTY LLC
56	- CALLED	6.274 ACRES	JOSE T VIGIL et ux
57	- CALLED	12.327 ACRES	KBW PROPERTIES, LTD
58	- CALLED	0.904 ACRES	GARSON LIMITED PARTNERSHIP
59	- CALLED	5.049 ACRES	RALPH C ROMERO
60	- CALLED	2.095 ACRES	AVES INDUSTRIES
61	- CALLED	10.353 ACRES	MOLAND MANUFACTURING

313.4653 TOTAL CALLED ACRES IN UNIT & ORIG UNIT



It is further requested that Ken Brummett be granted authority to execute the lease and all other documents necessary to complete this transaction. Director Puente-Brancato seconded the motion and the vote in favor was unanimous.

20.

With the recommendation of management, Director Sparks moved to ratify the pooling agreements executed by Ken Brummett on behalf of the Water District for the (1) XTO Manning-TRWD Units #1H, (2) XTO Manning-TRWD Units #2H and XTO Manning-TRWD Units #3H oil and gas wells at Eagle Mountain Lake as shown on Exhibits below.



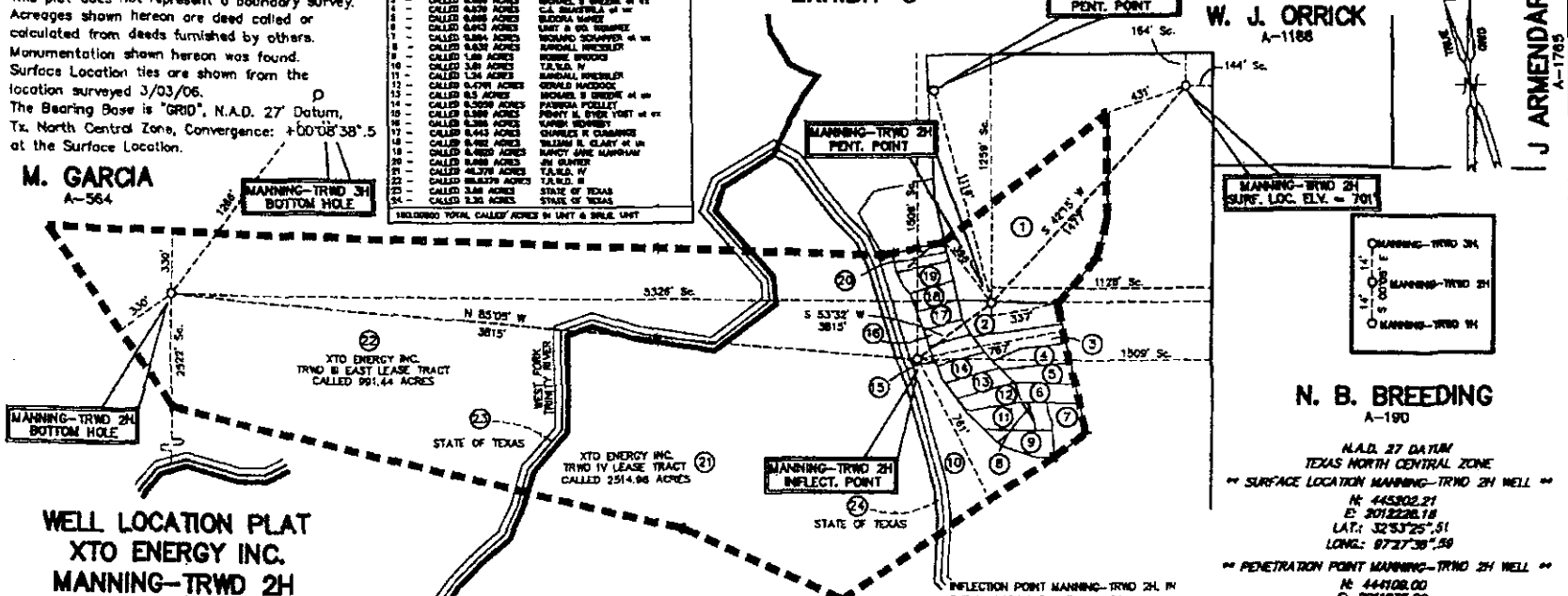


**\*\* NOTES \*\***

This plat does not represent a boundary survey. Acreages shown hereon are deed called or calculated from deeds furnished by others. Monumentation shown hereon was found. Surface Location ties are shown from the location surveyed 3/03/06. The Bearing Base is "GRID", N.A.D. 27 Datum, Tx. North Central Zone, Convergence: +00°08'38".5 at the Surface Location.

1	0.0000 ACRES	MANNING-BREEDING, INC.
2	0.0000 ACRES	MANNING-BREEDING, INC.
3	0.0000 ACRES	MANNING-BREEDING, INC.
4	0.0000 ACRES	MANNING-BREEDING, INC.
5	0.0000 ACRES	MANNING-BREEDING, INC.
6	0.0000 ACRES	MANNING-BREEDING, INC.
7	0.0000 ACRES	MANNING-BREEDING, INC.
8	0.0000 ACRES	MANNING-BREEDING, INC.
9	0.0000 ACRES	MANNING-BREEDING, INC.
10	0.0000 ACRES	MANNING-BREEDING, INC.
11	0.0000 ACRES	MANNING-BREEDING, INC.
12	0.0000 ACRES	MANNING-BREEDING, INC.
13	0.0000 ACRES	MANNING-BREEDING, INC.
14	0.0000 ACRES	MANNING-BREEDING, INC.
15	0.0000 ACRES	MANNING-BREEDING, INC.
16	0.0000 ACRES	MANNING-BREEDING, INC.
17	0.0000 ACRES	MANNING-BREEDING, INC.
18	0.0000 ACRES	MANNING-BREEDING, INC.
19	0.0000 ACRES	MANNING-BREEDING, INC.
20	0.0000 ACRES	MANNING-BREEDING, INC.
21	0.0000 ACRES	MANNING-BREEDING, INC.
22	0.0000 ACRES	MANNING-BREEDING, INC.
23	0.0000 ACRES	MANNING-BREEDING, INC.
24	0.0000 ACRES	MANNING-BREEDING, INC.
25	0.0000 ACRES	MANNING-BREEDING, INC.
26	0.0000 ACRES	MANNING-BREEDING, INC.
27	0.0000 ACRES	MANNING-BREEDING, INC.
28	0.0000 ACRES	MANNING-BREEDING, INC.
29	0.0000 ACRES	MANNING-BREEDING, INC.
30	0.0000 ACRES	MANNING-BREEDING, INC.
31	0.0000 ACRES	MANNING-BREEDING, INC.
32	0.0000 ACRES	MANNING-BREEDING, INC.
33	0.0000 ACRES	MANNING-BREEDING, INC.
34	0.0000 ACRES	MANNING-BREEDING, INC.
35	0.0000 ACRES	MANNING-BREEDING, INC.
36	0.0000 ACRES	MANNING-BREEDING, INC.
37	0.0000 ACRES	MANNING-BREEDING, INC.
38	0.0000 ACRES	MANNING-BREEDING, INC.
39	0.0000 ACRES	MANNING-BREEDING, INC.
40	0.0000 ACRES	MANNING-BREEDING, INC.
41	0.0000 ACRES	MANNING-BREEDING, INC.
42	0.0000 ACRES	MANNING-BREEDING, INC.
43	0.0000 ACRES	MANNING-BREEDING, INC.
44	0.0000 ACRES	MANNING-BREEDING, INC.
45	0.0000 ACRES	MANNING-BREEDING, INC.
46	0.0000 ACRES	MANNING-BREEDING, INC.
47	0.0000 ACRES	MANNING-BREEDING, INC.
48	0.0000 ACRES	MANNING-BREEDING, INC.
49	0.0000 ACRES	MANNING-BREEDING, INC.
50	0.0000 ACRES	MANNING-BREEDING, INC.
51	0.0000 ACRES	MANNING-BREEDING, INC.
52	0.0000 ACRES	MANNING-BREEDING, INC.
53	0.0000 ACRES	MANNING-BREEDING, INC.
54	0.0000 ACRES	MANNING-BREEDING, INC.
55	0.0000 ACRES	MANNING-BREEDING, INC.
56	0.0000 ACRES	MANNING-BREEDING, INC.
57	0.0000 ACRES	MANNING-BREEDING, INC.
58	0.0000 ACRES	MANNING-BREEDING, INC.
59	0.0000 ACRES	MANNING-BREEDING, INC.
60	0.0000 ACRES	MANNING-BREEDING, INC.
61	0.0000 ACRES	MANNING-BREEDING, INC.
62	0.0000 ACRES	MANNING-BREEDING, INC.
63	0.0000 ACRES	MANNING-BREEDING, INC.
64	0.0000 ACRES	MANNING-BREEDING, INC.
65	0.0000 ACRES	MANNING-BREEDING, INC.
66	0.0000 ACRES	MANNING-BREEDING, INC.
67	0.0000 ACRES	MANNING-BREEDING, INC.
68	0.0000 ACRES	MANNING-BREEDING, INC.
69	0.0000 ACRES	MANNING-BREEDING, INC.
70	0.0000 ACRES	MANNING-BREEDING, INC.
71	0.0000 ACRES	MANNING-BREEDING, INC.
72	0.0000 ACRES	MANNING-BREEDING, INC.
73	0.0000 ACRES	MANNING-BREEDING, INC.
74	0.0000 ACRES	MANNING-BREEDING, INC.
75	0.0000 ACRES	MANNING-BREEDING, INC.
76	0.0000 ACRES	MANNING-BREEDING, INC.
77	0.0000 ACRES	MANNING-BREEDING, INC.
78	0.0000 ACRES	MANNING-BREEDING, INC.
79	0.0000 ACRES	MANNING-BREEDING, INC.
80	0.0000 ACRES	MANNING-BREEDING, INC.
81	0.0000 ACRES	MANNING-BREEDING, INC.
82	0.0000 ACRES	MANNING-BREEDING, INC.
83	0.0000 ACRES	MANNING-BREEDING, INC.
84	0.0000 ACRES	MANNING-BREEDING, INC.
85	0.0000 ACRES	MANNING-BREEDING, INC.
86	0.0000 ACRES	MANNING-BREEDING, INC.
87	0.0000 ACRES	MANNING-BREEDING, INC.
88	0.0000 ACRES	MANNING-BREEDING, INC.
89	0.0000 ACRES	MANNING-BREEDING, INC.
90	0.0000 ACRES	MANNING-BREEDING, INC.
91	0.0000 ACRES	MANNING-BREEDING, INC.
92	0.0000 ACRES	MANNING-BREEDING, INC.
93	0.0000 ACRES	MANNING-BREEDING, INC.
94	0.0000 ACRES	MANNING-BREEDING, INC.
95	0.0000 ACRES	MANNING-BREEDING, INC.
96	0.0000 ACRES	MANNING-BREEDING, INC.
97	0.0000 ACRES	MANNING-BREEDING, INC.
98	0.0000 ACRES	MANNING-BREEDING, INC.
99	0.0000 ACRES	MANNING-BREEDING, INC.
100	0.0000 ACRES	MANNING-BREEDING, INC.

**EXHIBIT "C"**



**WELL LOCATION PLAT**  
**XTO ENERGY INC.**  
**MANNING-TRWD 2H**  
**150,000 ACRE UNIT**  
**TARRANT COUNTY, TEXAS**  
**SCALE: 1" = 800'**

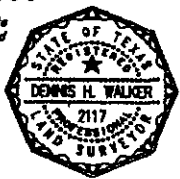
**BERNADINO SAMORA**  
 A-1384

**WALKER & ASSOCIATES SURVEYING, INC.**  
 TYLER, TEXAS PH: 903-534-9000

I, Dennis H. Walker, Registered Professional Land Surveyor do hereby state that this plat was prepared from a partial survey and from public record information and is true and correct to the best of my knowledge.  
 GIVEN UNDER MY HAND AND SEAL this the 2nd day of March, 2008.

*Dennis H. Walker*

Dennis H. Walker  
 Registered Professional Land Surveyor  
 State of Texas No. 2117



**SURFACE LOCATION MANNING-TRWD 2H, IN THE M. GARCIA SURVEY A-564 BEING 144' FROM THE EAST LINE OF SAME BEING THE WEST LINE OF THE W. J. ORRICK SURVEY, A-1188 AND 184' FROM THE NORTH LINE OF THE M. GARCIA SURVEY, A-564, SAME BEING THE SOUTH LINE OF THE W. J. ORRICK SURVEY, A-1188, ALSO BEING 451' FROM THE MOST NORTHERN UNIT CORNER.**

**PENETRATION POINT MANNING-TRWD 2H, IN THE M. GARCIA SURVEY A-564 BEING 1128' FROM THE EAST LINE OF SAME BEING THE WEST LINE OF THE N. B. BREEDING SURVEY, A-190 AND 1236' FROM THE NORTH LINE OF THE M. GARCIA SURVEY, A-564, SAME BEING THE SOUTH LINE OF THE W. J. ORRICK SURVEY, A-1188, ALSO BEING 337' FROM THE NORTHEAST UNIT LINE, ALSO BEING 396' FROM THE NORTHWEST UNIT LINE.**

**INFLECTION POINT MANNING-TRWD 2H, IN THE M. GARCIA SURVEY A-564 BEING 1509' FROM THE EAST LINE OF SAME BEING THE WEST LINE OF THE N. B. BREEDING SURVEY, A-190 AND 1509' FROM THE NORTH LINE OF THE M. GARCIA SURVEY, A-564, SAME BEING THE SOUTH LINE OF THE W. J. ORRICK SURVEY, A-1188, ALSO BEING 761' FROM THE SOUTHEAST UNIT LINE, ALSO BEING 767' FROM THE EAST UNIT LINE.**

**BOTTOM HOLE MANNING-TRWD 2H, IN THE M. GARCIA SURVEY A-564 BEING 5326' FROM THE EAST LINE OF SAME BEING THE WEST LINE OF THE N. B. BREEDING SURVEY, A-190 AND 2522' FROM THE SOUTH LINE OF THE M. GARCIA SURVEY, A-564, SAME BEING THE NORTH LINE OF THE BERNADINO SAMORA SURVEY, A-1384, ALSO BEING 330' FROM THE SOUTHWEST UNIT LINE, ALSO BEING 330' FROM THE NORTH UNIT LINE.**

**W. J. ORRICK**  
 A-1188

**N. B. BREEDING**  
 A-190

- \*\* SURFACE LOCATION MANNING-TRWD 2H WELL \*\***  
 N: 445302.21  
 E: 3012226.18  
 LAT: 32°53'25".51  
 LONG: 87°27'38".59
- \*\* PENETRATION POINT MANNING-TRWD 2H WELL \*\***  
 N: 444108.00  
 E: 2011235.00  
 LAT: 32°53'14".70  
 LONG: 87°27'48".24
- \*\* INFLECTION POINT MANNING-TRWD 2H WELL \*\***  
 N: 443268.00  
 E: 2040852.00  
 LAT: 32°53'11".90  
 LONG: 87°27'52".73
- \*\* BOTTOM HOLE LOCATION MANNING-TRWD 2H WELL \*\***  
 N: 444154.00  
 E: 2007037.00  
 LAT: 32°53'15".15  
 LONG: 87°28'37".47

Surface Location is located Southwest 1.83 miles from Mansfield, Tx. Mansfield, TX Quadrangle

**\*\* NOTES \*\***

This plat does not represent a boundary survey.  
 Acres shown hereon are deed called or  
 calculated from deeds furnished by others.  
 Monumentation shown hereon was found.  
 Surface Location ties are shown from the  
 location surveyed 3/03/06  
 The Bearing Base is "CRD", N.A.D. 27 Datum,  
 Tc. North Central Zone, Convergence: +00'08"38".5  
 at the Surface Location.

**SURFACE LOCATION MANNING-TRWD 3H, IN  
 THE M. GARCIA SURVEY A-564**  
 BEING 131' FROM THE EAST LINE OF SAME  
 BEING THE WEST LINE OF THE W.J. ORRICK  
 SURVEY, A-1188 AND  
 130' FROM THE NORTH LINE OF THE  
 M. GARCIA SURVEY, A-564, SAME  
 BEING THE SOUTH LINE OF THE W. J. ORRICK  
 SURVEY, A-1188, ALSO BEING 301' FROM THE  
 SOUTH UNIT LINE AND BEING 410' FROM THE  
 EAST UNIT LINE.

**BOTTOM HOLE MANNING-TRWD 3H, IN  
 THE M. GARCIA SURVEY A-564**  
 BEING 457'6" FROM THE EAST LINE OF SAME  
 BEING THE WEST LINE OF THE W.J. ORRICK  
 SURVEY, A-1188 AND  
 2208' FROM THE SOUTH LINE OF THE  
 M. GARCIA SURVEY, A-564, SAME BEING THE  
 NORTH LINE OF THE BERNADINO SAMORA  
 SURVEY, A-1384, ALSO BEING 330' FROM THE  
 NORTHWEST UNIT LINE, ALSO BEING 884' FROM THE  
 SOUTH UNIT LINE.

**PENETRATION POINT MANNING-TRWD 3H, IN  
 THE M. GARCIA SURVEY A-564**  
 BEING 141' FROM THE EAST LINE OF SAME  
 BEING THE WEST LINE OF THE W.J. ORRICK  
 SURVEY, A-1188 AND  
 183' FROM THE NORTH LINE OF THE  
 M. GARCIA SURVEY, A-564, SAME  
 BEING THE SOUTH LINE OF THE W. J. ORRICK  
 SURVEY, A-1188, ALSO BEING 875' FROM THE  
 EAST UNIT LINE, ALSO BEING 832'  
 FROM THE SOUTHEAST UNIT LINE.

**WELL LOCATION PLAT  
 XTO ENERGY INC.  
 MANNING-TRWD 3H  
 160,000 ACRE UNIT  
 TARRANT COUNTY, TEXAS**

**WALKER & ASSOCIATES SURVEYING, INC.**  
 TYLER, TEXAS PH: 805-534-9000

*L. Dennis H. Walker, Registered Professional Land Surveyor do hereby state  
 that this plat was prepared from a partial survey and from public record  
 information and is true and correct to the best of my knowledge.*

*GIVEN UNDER MY HAND AND SEAL, this the 3rd day of March, 2006.*

*Dennis H. Walker*

**Dennis H. Walker**  
 Registered Professional Land Surveyor  
 State of Texas No. 2117



N.A.D. 27 DATUM  
 TEXAS NORTH CENTRAL ZONE  
**\*\* SURFACE LOCATION MANNING-TRWD 3H WELL \*\***  
 N: 445116.31  
 E: 201226.14  
 LAT.: 32°53'25".64  
 LONG.: 97°27'35".89

**\*\* PENETRATION POINT MANNING-TRWD 3H WELL \*\***  
 N: 445188.00  
 E: 3010843.00  
 LAT.: 32°53'25".35  
 LONG.: 97°27'31".98

**\*\* BOTTOM HOLE LOCATION MANNING-TRWD 3H WELL \*\***  
 N: 445188.00  
 E: 2067788.00  
 LAT.: 32°53'25".18  
 LONG.: 97°26'28".88

1	CALLS 2.50 ACRES	BEING 1/2 SECTION 10 W
2	CALLS 2.50 ACRES	BEING 1/2 SECTION 10 W
3	CALLS 2.50 ACRES	BEING 1/2 SECTION 10 W
4	CALLS 2.50 ACRES	BEING 1/2 SECTION 10 W
5	CALLS 2.50 ACRES	BEING 1/2 SECTION 10 W
6	CALLS 2.50 ACRES	BEING 1/2 SECTION 10 W
7	CALLS 2.50 ACRES	BEING 1/2 SECTION 10 W
8	CALLS 2.50 ACRES	BEING 1/2 SECTION 10 W
9	CALLS 2.50 ACRES	BEING 1/2 SECTION 10 W
10	CALLS 2.50 ACRES	BEING 1/2 SECTION 10 W
11	CALLS 2.50 ACRES	BEING 1/2 SECTION 10 W
12	CALLS 2.50 ACRES	BEING 1/2 SECTION 10 W
13	CALLS 2.50 ACRES	BEING 1/2 SECTION 10 W
14	CALLS 2.50 ACRES	BEING 1/2 SECTION 10 W
15	CALLS 2.50 ACRES	BEING 1/2 SECTION 10 W
16	CALLS 2.50 ACRES	BEING 1/2 SECTION 10 W
17	CALLS 2.50 ACRES	BEING 1/2 SECTION 10 W
18	CALLS 2.50 ACRES	BEING 1/2 SECTION 10 W
19	CALLS 2.50 ACRES	BEING 1/2 SECTION 10 W
20	CALLS 2.50 ACRES	BEING 1/2 SECTION 10 W
21	CALLS 2.50 ACRES	BEING 1/2 SECTION 10 W
22	CALLS 2.50 ACRES	BEING 1/2 SECTION 10 W
23	CALLS 2.50 ACRES	BEING 1/2 SECTION 10 W
24	CALLS 2.50 ACRES	BEING 1/2 SECTION 10 W
25	CALLS 2.50 ACRES	BEING 1/2 SECTION 10 W
26	CALLS 2.50 ACRES	BEING 1/2 SECTION 10 W
27	CALLS 2.50 ACRES	BEING 1/2 SECTION 10 W
28	CALLS 2.50 ACRES	BEING 1/2 SECTION 10 W
29	CALLS 2.50 ACRES	BEING 1/2 SECTION 10 W
30	CALLS 2.50 ACRES	BEING 1/2 SECTION 10 W
31	CALLS 2.50 ACRES	BEING 1/2 SECTION 10 W
32	CALLS 2.50 ACRES	BEING 1/2 SECTION 10 W
33	CALLS 2.50 ACRES	BEING 1/2 SECTION 10 W
34	CALLS 2.50 ACRES	BEING 1/2 SECTION 10 W
35	CALLS 2.50 ACRES	BEING 1/2 SECTION 10 W
36	CALLS 2.50 ACRES	BEING 1/2 SECTION 10 W
37	CALLS 2.50 ACRES	BEING 1/2 SECTION 10 W
38	CALLS 2.50 ACRES	BEING 1/2 SECTION 10 W
39	CALLS 2.50 ACRES	BEING 1/2 SECTION 10 W
40	CALLS 2.50 ACRES	BEING 1/2 SECTION 10 W
41	CALLS 2.50 ACRES	BEING 1/2 SECTION 10 W
42	CALLS 2.50 ACRES	BEING 1/2 SECTION 10 W
43	CALLS 2.50 ACRES	BEING 1/2 SECTION 10 W
44	CALLS 2.50 ACRES	BEING 1/2 SECTION 10 W
45	CALLS 2.50 ACRES	BEING 1/2 SECTION 10 W
46	CALLS 2.50 ACRES	BEING 1/2 SECTION 10 W
47	CALLS 2.50 ACRES	BEING 1/2 SECTION 10 W
48	CALLS 2.50 ACRES	BEING 1/2 SECTION 10 W
49	CALLS 2.50 ACRES	BEING 1/2 SECTION 10 W
50	CALLS 2.50 ACRES	BEING 1/2 SECTION 10 W
51	CALLS 2.50 ACRES	BEING 1/2 SECTION 10 W
52	CALLS 2.50 ACRES	BEING 1/2 SECTION 10 W
53	CALLS 2.50 ACRES	BEING 1/2 SECTION 10 W
54	CALLS 2.50 ACRES	BEING 1/2 SECTION 10 W
55	CALLS 2.50 ACRES	BEING 1/2 SECTION 10 W
56	CALLS 2.50 ACRES	BEING 1/2 SECTION 10 W
57	CALLS 2.50 ACRES	BEING 1/2 SECTION 10 W
58	CALLS 2.50 ACRES	BEING 1/2 SECTION 10 W
59	CALLS 2.50 ACRES	BEING 1/2 SECTION 10 W
60	CALLS 2.50 ACRES	BEING 1/2 SECTION 10 W
61	CALLS 2.50 ACRES	BEING 1/2 SECTION 10 W
62	CALLS 2.50 ACRES	BEING 1/2 SECTION 10 W
63	CALLS 2.50 ACRES	BEING 1/2 SECTION 10 W
64	CALLS 2.50 ACRES	BEING 1/2 SECTION 10 W
65	CALLS 2.50 ACRES	BEING 1/2 SECTION 10 W
66	CALLS 2.50 ACRES	BEING 1/2 SECTION 10 W
67	CALLS 2.50 ACRES	BEING 1/2 SECTION 10 W
68	CALLS 2.50 ACRES	BEING 1/2 SECTION 10 W
69	CALLS 2.50 ACRES	BEING 1/2 SECTION 10 W
70	CALLS 2.50 ACRES	BEING 1/2 SECTION 10 W
71	CALLS 2.50 ACRES	BEING 1/2 SECTION 10 W
72	CALLS 2.50 ACRES	BEING 1/2 SECTION 10 W
73	CALLS 2.50 ACRES	BEING 1/2 SECTION 10 W
74	CALLS 2.50 ACRES	BEING 1/2 SECTION 10 W
75	CALLS 2.50 ACRES	BEING 1/2 SECTION 10 W
76	CALLS 2.50 ACRES	BEING 1/2 SECTION 10 W
77	CALLS 2.50 ACRES	BEING 1/2 SECTION 10 W
78	CALLS 2.50 ACRES	BEING 1/2 SECTION 10 W
79	CALLS 2.50 ACRES	BEING 1/2 SECTION 10 W
80	CALLS 2.50 ACRES	BEING 1/2 SECTION 10 W
81	CALLS 2.50 ACRES	BEING 1/2 SECTION 10 W
82	CALLS 2.50 ACRES	BEING 1/2 SECTION 10 W
83	CALLS 2.50 ACRES	BEING 1/2 SECTION 10 W
84	CALLS 2.50 ACRES	BEING 1/2 SECTION 10 W
85	CALLS 2.50 ACRES	BEING 1/2 SECTION 10 W
86	CALLS 2.50 ACRES	BEING 1/2 SECTION 10 W
87	CALLS 2.50 ACRES	BEING 1/2 SECTION 10 W
88	CALLS 2.50 ACRES	BEING 1/2 SECTION 10 W
89	CALLS 2.50 ACRES	BEING 1/2 SECTION 10 W
90	CALLS 2.50 ACRES	BEING 1/2 SECTION 10 W
91	CALLS 2.50 ACRES	BEING 1/2 SECTION 10 W
92	CALLS 2.50 ACRES	BEING 1/2 SECTION 10 W
93	CALLS 2.50 ACRES	BEING 1/2 SECTION 10 W
94	CALLS 2.50 ACRES	BEING 1/2 SECTION 10 W
95	CALLS 2.50 ACRES	BEING 1/2 SECTION 10 W
96	CALLS 2.50 ACRES	BEING 1/2 SECTION 10 W
97	CALLS 2.50 ACRES	BEING 1/2 SECTION 10 W
98	CALLS 2.50 ACRES	BEING 1/2 SECTION 10 W
99	CALLS 2.50 ACRES	BEING 1/2 SECTION 10 W
100	CALLS 2.50 ACRES	BEING 1/2 SECTION 10 W

**W J ORRICK  
 ABSTRACT 1188**

**M. GARCIA  
 A-564**

**BERNADINO SAMORA  
 A-1384**

600 300 0 600 1200

1" = 500'

Surface Location is located  
 Northwest 4.8 miles from Bagtown, Tx.  
 AVONDALE, Dumas/Parade

**N. B. BREEDING  
 A-1380**

+00'08"38".5

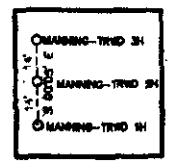
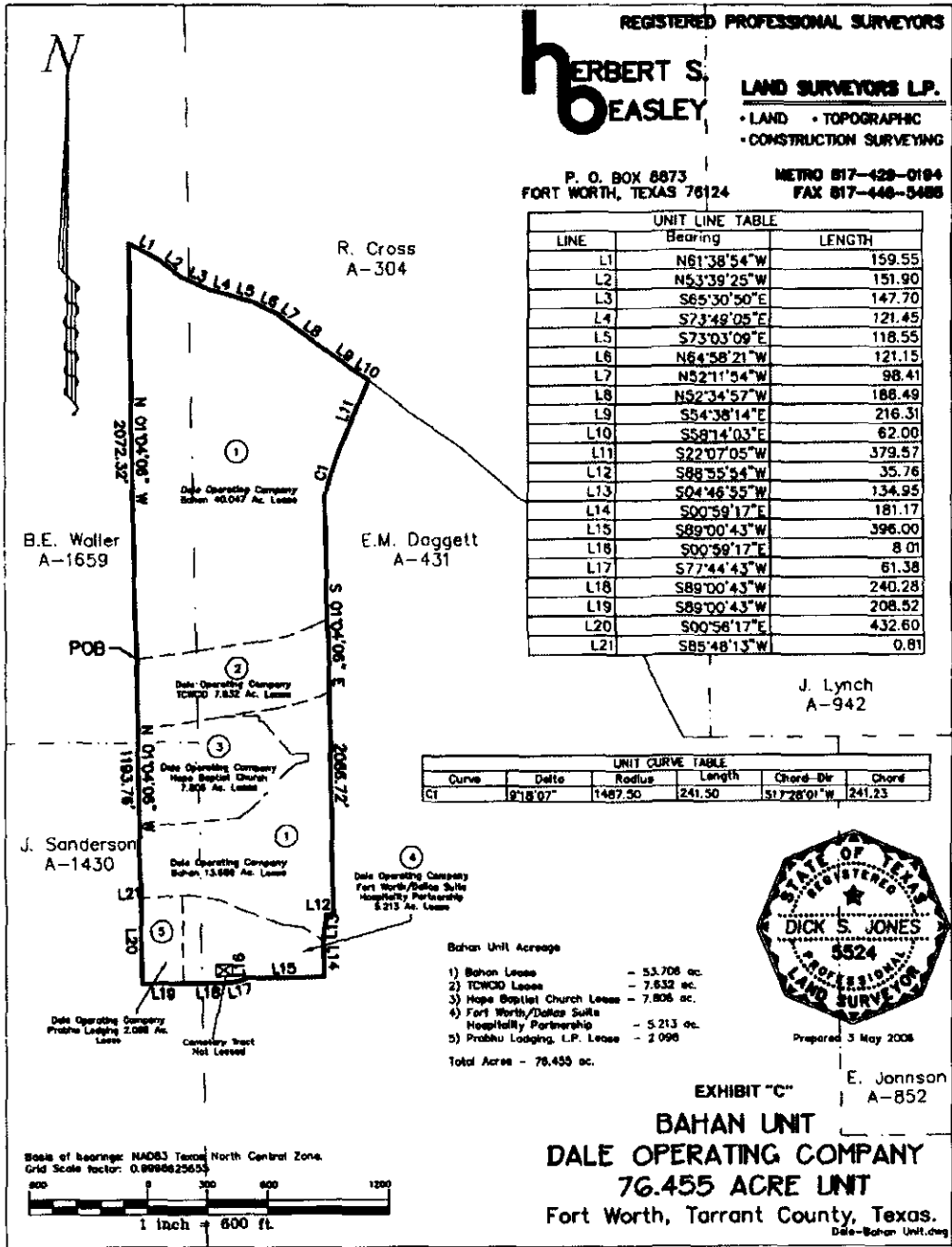


Exhibit "C"

Director Stevens seconded the motion and the vote in favor was unanimous.

21.

With the recommendation of management, Director Stevens moved to ratify the pooling agreements executed by Ken Brummett on behalf of the Water District for the Dale Operating Company - Bahan Gas Unit oil and gas wells shown on the Exhibit below.



REGISTERED PROFESSIONAL SURVEYORS

**HERBERT S. BEASLEY**

**LAND SURVEYORS L.P.**

• LAND • TOPOGRAPHIC  
• CONSTRUCTION SURVEYING

P. O. BOX 8873  
FORT WORTH, TEXAS 76124

METRO 817-428-0184  
FAX 817-448-5488

UNIT LINE TABLE		
LINE	Bearing	LENGTH
L1	N61°38'54"W	159.55
L2	N53°39'25"W	151.90
L3	S65°30'50"E	147.70
L4	S73°48'05"E	121.45
L5	S73°03'09"E	118.55
L6	N64°58'21"W	121.15
L7	N52°11'54"W	98.41
L8	N52°34'57"W	188.49
L9	S54°38'14"E	216.31
L10	S58°14'03"E	62.00
L11	S22°07'05"W	379.57
L12	S88°55'54"W	35.76
L13	S04°46'55"W	134.95
L14	S00°59'17"E	181.17
L15	S89°00'43"W	396.00
L16	S00°59'17"E	8.01
L17	S77°44'43"W	61.38
L18	S89°00'43"W	240.28
L19	S89°00'43"W	208.52
L20	S00°58'17"E	432.60
L21	S85°48'13"W	0.81

UNIT CURVE TABLE					
Curve	Delta	Radius	Length	Chord-Dir	Chord
C1	97°18'07"	1487.50	241.50	S17°28'01"W	241.23

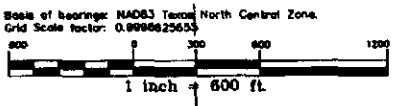


- Bahan Unit Acreage
- 1) Bahan Lease - 53.708 ac.
  - 2) TENDO Lease - 7.532 ac.
  - 3) Hope Baptist Church Lease - 7.806 ac.
  - 4) Fort Worth/Dallas Suite Hopefully Partnership - 5.213 ac.
  - 5) Prabhu Lodging, L.P. Lease - 2.098 ac.
- Total Acres - 76.455 ac.

Prepared 3 May 2008

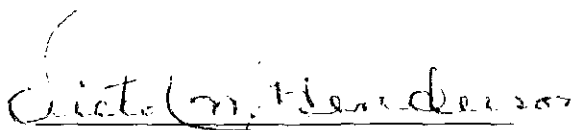
EXHIBIT "C" E. Jonsson  
A-852

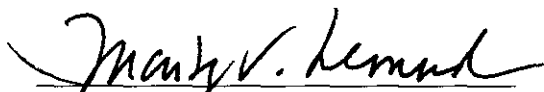
**BAHAN UNIT**  
**DALE OPERATING COMPANY**  
**76.455 ACRE UNIT**  
Fort Worth, Tarrant County, Texas.  
Dale-Bahan Unit.dwg



Director Puente-Brancato seconded the motion and the vote in favor was unanimous.

There being no further business before the Board of Directors, the meeting was adjourned.

  
\_\_\_\_\_  
President

  
\_\_\_\_\_  
Secretary Pro Tem