

MINUTES OF A MEETING OF THE BOARD OF DIRECTORS OF
TARRANT REGIONAL WATER DISTRICT
HELD ON THE 19TH DAY OF JUNE 2007 AT 9:30 A.M.

The call of the roll disclosed the presence of the Directors as follows:

<u>Present</u>	<u>Absent</u>
Victor W. Henderson	Jim W. Lane
Hal S. Sparks III	
Jack R. Stevens	
Marty V. Leonard	

Also present were James M. Oliver, Alan Thomas, Ken Brummett, JL Cabrera, Shanna Cate, Wesley Cleveland, Linda Christie, Nancy King, David Marshall, Mark Olson, David Owen, Wayne Owen, Madeline Robson and Mike Witthaus.

Also in attendance were George Christie, General Counsel for Tarrant Regional Water District (the Water District); Jay Pritchard of Trinity Communications; Alan Plummer, Alan Tucker and Preston Dillard of Alan Plummer Associates, Inc.; Ron Lemons of Freese and Nichols; Sarah Williams representing Streams & Valleys; Dick Fish of Save Eagle Mountain Lake; Max Baker of the Fort Worth Star Telegram and Earl Alexander.

President Henderson convened the meeting with the assurance from management that all requirements of the "open meetings" laws had been met.

1.

All present were given the opportunity to join in reciting the Pledge of Allegiance.

2.

On a motion made by Director Sparks and seconded by Director Leonard, the Directors unanimously voted to approve the minutes from the meeting held May 15, 2007. It was accordingly ordered that these minutes be placed in the permanent files of Tarrant Regional Water District.

3.

There were no persons of the general public requesting the opportunity to address the Board of Directors.

4.

With the recommendation of management, Director Leonard moved to approve a contract with Gideon Toal to produce a 10-year plan for implementation of strategies identified in the 2003 Trinity River Vision (TRV) Master Plan. The Trinity River Vision Neighborhood and Recreation Enhancement Program shall not exceed a total cost of \$372,440. Funding is included in the FY 2007 General Fund Budget. The Water District shall be reimbursed from the City of Fort Worth the amount of \$46,620 and from Streams & Valley's Inc. the amount of \$26,620. Director Sparks seconded the motion and the vote in favor was unanimous.

5.

With the recommendation of management, Director Stevens moved to approve operations and maintenance expenditures as noted below:

Project	Vendor	Budgeted Cost	Funding Source
Bulk Granulated Fertilizer Total Amount \$42,750	Justin Seed Company, Inc.	\$40,250	2007 General Fund Budget
		\$2,500	2007 Revenue Fund Budget
Maximo Upgrade Total Amount \$296,640	EMA Software	\$54,000	2007 General Fund Budget
		\$181,000	2007 Revenue Fund Budget

Director Leonard seconded the motion and the vote in favor was unanimous.

6.

With the recommendation of management, Director Sparks moved to release the contract retainage in the amount of \$13,034 to Stillwell Building Systems, Inc. for finish out of office and exhibit space for the Trinity River Vision Authority leased space at 307 West Seventh St., Suite 100, Commerce Building, Fort Worth, Texas. Funding for this contract is included in the FY 2007 General Fund Budget. Director Stevens seconded the motion and the vote in favor was unanimous.

7.

With the recommendation of management, Director Stevens moved to approve a contract with the Texas Water Development Board to conduct a hydrographic survey to determine the storage capacity and rate of sedimentation of the Richland-Chambers Reservoir at a cost not to exceed \$82,032.79. Funding for this contract is included in the FY 2007 Revenue Fund Budget and the FY 2008 Revenue Fund Budget. Director Leonard seconded the motion and the vote in favor was unanimous.

8.

With the recommendation of management, Director Sparks moved to approve a contract with the Texas Water Development Board to conduct a hydrographic survey to determine the storage capacity and rate of sedimentation of the Eagle Mountain Reservoir at a cost not to exceed \$36,542.29. Funding for this contract is included in the FY 2007 Revenue Fund Budget and the FY 2008 Revenue Fund Budget. Director Leonard seconded the motion and the vote in favor was unanimous.

9.

With the recommendation of management, Director Stevens moved to approve a contract with TXU Electrical Delivery Company for underground conduits across the Lake Benbrook Emergency Spillway Channel and two 2400/4160 transformers for the power needs of the Benbrook Booster Pump Station. Funding for this contract is included in the 2006 Bond Issue. Director Sparks seconded the motion and the vote in favor was unanimous.

10.

With the recommendation of management, Director Sparks moved to approve Change Order Number 4 to the Richland-Chambers Phase I Wetlands Expansion Project contract with Archer Western in the amount of \$911,102. Funding for this amendment is included in the 2006 Bond Issue. Director Leonard seconded the motion and the vote in favor was unanimous.

11.

With the recommendation of management, Director Sparks moved to waive the take-or-pay provision included in the TRA - Ennis Water Contract for the Fiscal Year 2007. Director Stevens seconded the motion and the vote in favor was unanimous.

12.

With the recommendation of management, Director Sparks moved to approve the Water Conservation and Drought Contingency Plan. Director Leonard seconded the motion and the vote in favor was unanimous.

13.

With the recommendation of management, Director Leonard moved to ratify the pooling agreements executed by Ken Brummett on behalf of the Water District for the four (4) XTO units listed below and amending of the TRWD II West EB Unit E #2H as shown on the Exhibits below. Director Sparks seconded the motion and the vote in favor was unanimous.

A. XTO POOLING AGREEMENTS FOR THE FOLLOWING UNITS:

1. **TRWD HEARNE #2H**
2. **TRWD HW #4H**
3. **TXU TRWD S UNIT #17H**
4. **TXU TRWD N UNIT #10H**

B. XTO AMENDMENT TO POOLING FOR THE FOLLOWING UNIT:

1. **TRWD II WEST EB UNIT E #2H**

**** NOTES ****

This plat does not represent a boundary survey. Acreages shown hereon are deed called or calculated from deeds furnished by others. Monumentation shown hereon was found. Surface Location ties are shown from the location surveyed 9/12/06. The Bearing Base is "GRID", N.A.D. 27 Datum, Tx. North Central Zone, Convergence: +00°07'19".0 at the Surface Location.

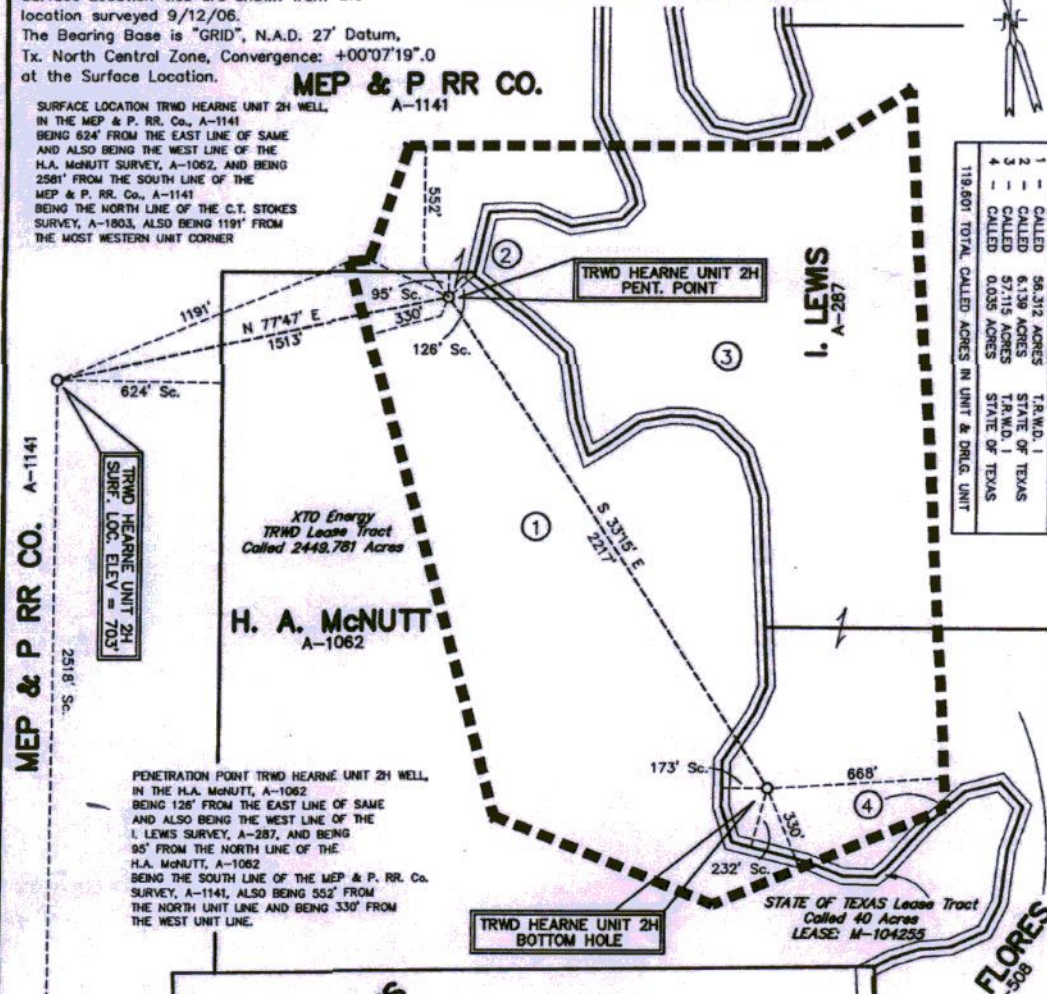
****** DRIVING DIRECTIONS ******
 FROM THE INTERSECTION OF 730 & PORTWOOD, GO EAST ON PORTWOOD TO THE INTERSECTION OF LIBERTY SCHOOL & PORTWOOD, GO SOUTH ON LIBERTY SCHOOL APPROX. 0.5 MILES TO INTERSECTION OF LIBERTY SCHOOL AND COURTNEY, GO EAST ON COURTNEY ABOUT 1000 FEET TO LEASE ROAD ON SOUTH SIDE OF ROAD.

+00°07'19".0

MEP & P RR CO.

SURFACE LOCATION TRWD HEARNE UNIT 2H WELL, IN THE MEP & P. RR. Co., A-1141 BEING 624' FROM THE EAST LINE OF SAME AND ALSO BEING THE WEST LINE OF THE H.A. McNUTT SURVEY, A-1062, AND BEING 2581' FROM THE SOUTH LINE OF THE MEP & P. RR. Co., A-1141 BEING THE NORTH LINE OF THE C.T. STOKES SURVEY, A-1803, ALSO BEING 1191' FROM THE MOST WESTERN UNIT CORNER

1	CALLED	56,312 ACRES	T.R.W.D. 1
2	CALLED	6,139 ACRES	STATE OF TEXAS
3	CALLED	57,115 ACRES	T.R.W.D. 1
4	CALLED	0.035 ACRES	STATE OF TEXAS
119,601 TOTAL CALLED ACRES IN UNIT & DRUG UNIT			



T. STOKES
 A-1803
WELL LOCATION PLAT
XTO ENERGY INC.
TRWD HEARNE UNIT 2H
119.601 ACRE UNIT
TARRANT COUNTY, TEXAS

BOTTOM HOLE LOC. TRWD HEARNE UNIT 2H WELL, IN THE D.T. FLORES, A-508 BEING 173' FROM THE WEST LINE OF SAME AND ALSO BEING THE EAST LINE OF THE H. A. McNUTT, A-1062, AND BEING 232' FROM THE SOUTH LINE OF THE D.T. FLORES, A-508 BEING A NORTH LINE OF THE H. A. McNUTT SURVEY, A-1062, ALSO BEING 668' FROM THE EAST UNIT LINE AND BEING 330' FROM THE SOUTH UNIT LINE.

N.A.D. 27 DATUM
TEXAS NORTH CENTRAL ZONE
**** SURFACE LOCATION TRWD HEARNE UNIT 2H WELL ****
 N: 474368.95
 E: 1994277.39
 LAT.: 32°58'14".16
 LONG.: 97°31'07".18
**** PENETRATION POINT TRWD HEARNE UNIT 2H WELL ****
 N: 474690.29
 E: 1995766.20
 LAT.: 32°58'17".33
 LONG.: 97°30'49".62

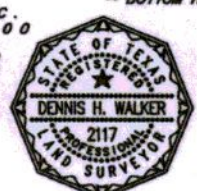
**** BOTTOM HOLE TRWD HEARNE UNIT 2H WELL ****
 N: 472836.46
 E: 1996971.44
 LAT.: 32°57'58".99
 LONG.: 97°30'35".55

WALKER & ASSOCIATES SURVEYING, INC.
 TYLER, TEXAS PH: 903-534-9000

I, Dennis H. Walker, Registered Professional Land Surveyor do hereby state that this plat was prepared from a partial survey and from public record information and is true and correct to the best of my knowledge.

GIVEN UNDER MY HAND AND SEAL, this the 16th day of November, 2006.

By: *Dennis H. Walker*
 Dennis H. Walker
 Registered Professional Land Surveyor
 State of Texas No. 2117



Surface Location is located 4.8 Miles Northeast of Azle "AZLE" Quadrangle

**** NOTES ****

This plat does not represent a boundary survey. Acreages shown hereon are deed called or calculated from deeds furnished by others. Monumentation shown hereon was found. Surface Location ties are shown from the location surveyed 11/03/04. The Bearing Base is "GRID", N.A.D. 27' Datum, Tx. North Central Zone, Convergence: -00°00'07".7 at the Surface Location.

H. S. WILLIAMS
A-1960

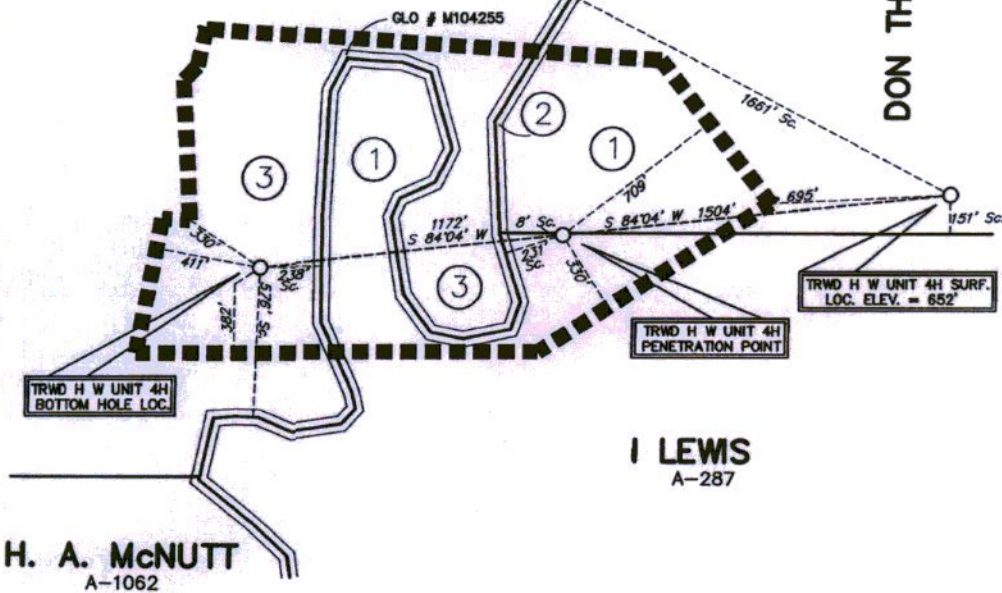
-00°00'07".7



1	- CALLED	25.11 ACRES	T.R.W.D. I
2	- CALLED	5.66 ACRES	STATE OF TEXAS
3	- CALLED	23.23 ACRES	T.R.W.D. I
54.00 TOTAL CALLED ACRES IN UNIT & DRLG. UNIT			

MEP & P RR CO.
A-1141

DON THOMAS FLORES
A-505



I LEWIS
A-287

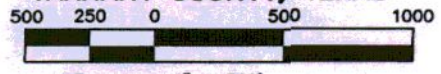
H. A. McNUTT
A-1062

SURFACE LOCATION TRWD H W UNIT 4H WELL, IN THE DON THOMAS FLORES SURVEY, A-505, BEING 151' FROM THE SOUTH LINE OF SAME BEING THE NORTH LINE OF THE I LEWIS SURVEY, A-287 AND BEING 1661' FROM THE WEST LINE OF THE DON THOMAS FLORES SURVEY, A-505, SAME BEING THE EAST LINE OF THE MEP & P RR Co. SURVEY, A-1141, ALSO BEING 695' FROM THE EAST LEASE LINE CORNER.

PENETRATION POINT TRWD H W UNIT 4H WELL, IN THE I LEWIS SURVEY, A-287, BEING 8' FROM THE NORTH LINE OF SAME BEING THE SOUTH LINE OF THE DON THOMAS FLORES SURVEY, A-505 AND BEING 231' FROM THE WEST LINE OF THE I LEWIS SURVEY, A-287, SAME BEING THE EAST LINE OF THE MEP & P RR Co. SURVEY, A-1141, ALSO BEING 709' FROM THE EAST LEASE LINE AND BEING 330' FROM THE SOUTH LEASE LINE.

BOTTOM HOLE LOCATION TRWD H W UNIT 4H WELL, IN THE MEP & P RR Co. SURVEY, A-1141, BEING 576' FROM THE SOUTH LINE OF SAME BEING THE NORTH LINE OF THE I LEWIS SURVEY, A-287 AND BEING 238' FROM THE EAST LINE OF THE MEP & P RR Co. SURVEY, A-1141, SAME BEING THE WEST LINE OF THE I LEWIS SURVEY, A-287 ALSO BEING 330' FROM A INTERIOR LEASE CORNER AND BEING 382' FROM A SOUTH LEASE CORNER.

WELL LOCATION PLAT
XTO ENERGY INC.
TRWD H W UNIT 4H WELL
54.00 ACRE POOLED UNIT
TARRANT COUNTY, TEXAS



1" = 500'

WALKER & ASSOCIATES SURVEYING, INC.
TYLER, TEXAS PH: 903-534-9000

I, Dennis H. Walker, Registered Professional Land Surveyor do hereby state that this plat was prepared from a partial survey and from public record information and is true and correct to the best of my knowledge.

GIVEN UNDER MY HAND AND SEAL, this the 23rd day of February, 2005.

By: *Dennis H. Walker*
Dennis H. Walker
Registered Professional Land Surveyor
State of Texas No. 2117



- N.A.D. 27 DATUM
TEXAS NORTH CENTRAL ZONE
- ** SURFACE LOCATION TRWD H W UNIT 4H WELL **
N: 475868.63
E: 1998740.98
LAT.: 32°58'28".99
LONG.: 97°30'14".78
- ** PENETRATION POINT TRWD H W UNIT 4H WELL **
N: 475713.23
E: 1997244.83
LAT.: 32°58'27".46
LONG.: 97°30'32".34
- ** BOTTOM HOLE TRWD H W UNIT 4H WELL **
N: 475592.17
E: 1996078.40
LAT.: 32°58'26".26
LONG.: 97°30'48".03

Surface Location is located Northwest 4.0 Miles from Avondale "AVONDALE" Quadrangle

EXHIBIT "C"

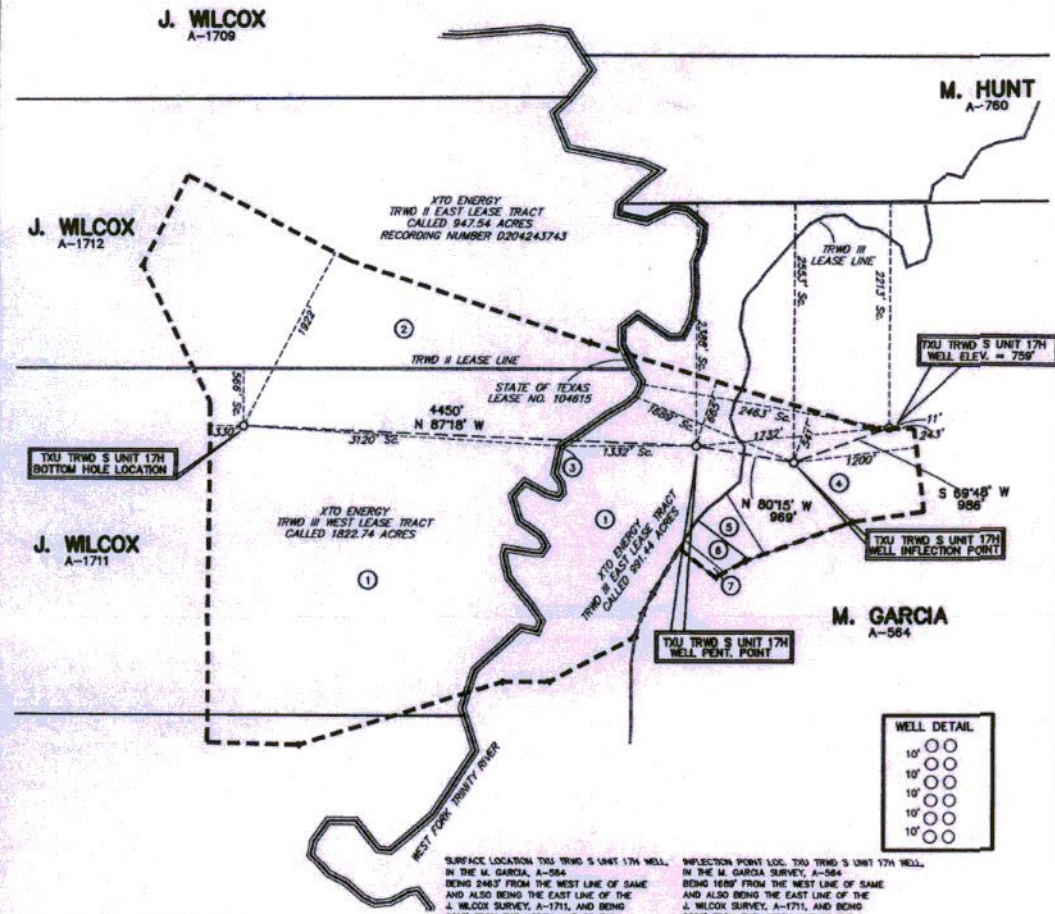
** NOTES **

This plot does not represent a boundary survey. Acres shown hereon are deed called or calculated from deeds furnished by others. Monumentation shown hereon was found. Surface Location ties are shown from the location surveyed 9/12/06. The Bearing Base is "GRID", N.A.D. 27 Datum, Tx. North Central Zone, Convergence: +00'07'19".0 at the Surface Location.

1	- CALLED	350.30 ACRES	TRWD III
2	- CALLED	100.79 ACRES	TRWD II
3	- CALLED	6.58 ACRES	STATE OF TEXAS
4	- CALLED	54.73 ACRES	XTO MINERALS
5	- CALLED	3.99 ACRES	DORREEN KEVARR HILLARD Trustee
6	- CALLED	2.804 ACRES	9919 BOAT CLUB ROAD, LLC
7	- CALLED	1.045 ACRES	EDWARD L. WILKIE et ux
522.429 TOTAL CALLED ACRES IN POOLED UNIT			

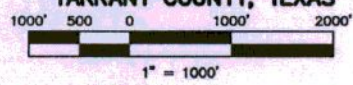
R. GAUGURA
A-563

+00'07'19".0



***** DRIVING DIRECTIONS *****
FROM THE INTERSECTION OF 287 & W. BAILEY BOSWELL RD. (4040)
GO WEST ON W. BAILEY BOSWELL RD FOR 2.5 MILES
TURN NORTH ON TO BOAT CLUB RD. FOLLOW
BOAT CLUB RD FOR 4.3 MILES TO LEASE ROAD ON
NORTH SIDE OF ROAD, FOLLOW LEASE ROAD TO PAD.

WELL LOCATION PLAT
XTO ENERGY INC.
TXU TRWD S UNIT 17H
522.429 ACRE POOLED UNIT
TARRANT COUNTY, TEXAS



WALKER & ASSOCIATES SURVEYING, INC.
TYLER, TEXAS PH: 903-534-9000

I, Dennis H. Walker, Registered Professional Land Surveyor do hereby state that this plat was prepared from a partial survey and from public record information and is true and correct to the best of my knowledge.

GIVEN UNDER MY HAND AND SEAL, this 19th day of November, 2006.
By: *Dennis H. Walker*
Dennis H. Walker
Registered Professional Land Surveyor
State of Texas No. 2117



N.A.D. 27 DATUM
TEXAS NORTH CENTRAL ZONE
** SURFACE LOCATION TXU TRWD S UNIT 17H WELL **
N: 450028.81
E: 200824.87
LAT: 32°54'13".30
LONG: 97°28'46".15
** INFLECTION POINT TXU TRWD S UNIT 17H WELL **
N: 449888.34
E: 2003708.72
LAT: 32°54'07".63
LONG: 97°28'59".01
** PENETRATION POINT TXU TRWD S UNIT 17H WELL **
N: 448833.56
E: 2004244.41
LAT: 32°54'11".58
LONG: 97°29'10".21
** BOTTOM HOLE TXU TRWD S UNIT 17H WELL **
N: 450082.88
E: 1999798.58
LAT: 32°54'13".63
LONG: 97°30'02".30

Surface Location is located
0.9 Miles Northwest of SAGRAW
"AVONDALE" Quadrangle

EXHIBIT "C"

** NOTES **

This plat does not represent a boundary survey. Acres shown hereon are deed called or calculated from deeds furnished by others. Monumentation shown hereon was found. Surface Location ties are shown from the location surveyed 9/12/06. The Bearing Base is "GRID", N.A.D. 27' Datum, Tx. North Central Zone, Convergence: +00°07'19".0 at the Surface Location.

1	- CALLED	413.97 ACRES	TRWD II
2	- CALLED	43.68 ACRES	TRWD III
3	- CALLED	13.20 ACRES	STATE OF TEXAS
4	- CALLED	63.48 ACRES	XTO MINERALS
534.33 TOTAL CALLED ACRES IN POOLED UNIT			

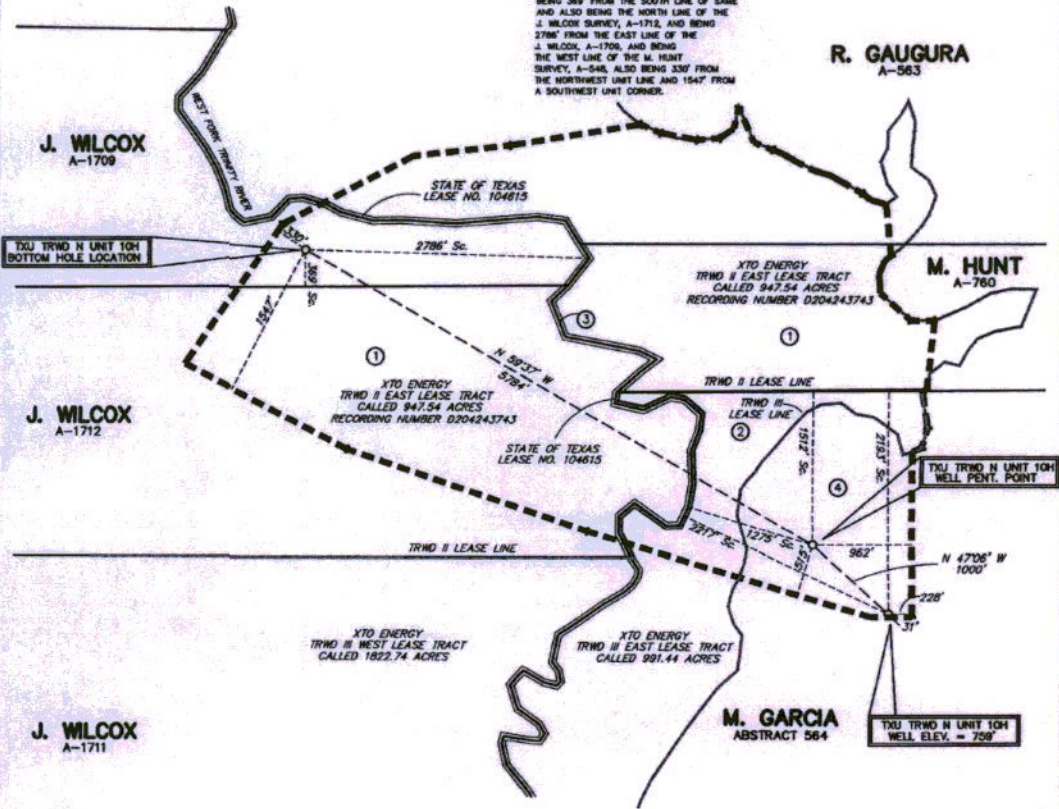
+00°07'19".0



SURFACE LOCATION TXU TRWD N UNIT 10H WELL,
IN THE M. GARCIA, A-564
BEING 2217' FROM THE WEST LINE OF SAME
AND ALSO BEING THE EAST LINE OF THE
J. WILCOX SURVEY, A-1712, AND BEING
2183' FROM THE NORTH LINE OF THE
M. GARCIA SURVEY, A-564
BEING THE SOUTH LINE OF THE M. HUNT
SURVEY, A-760, ALSO BEING 31' FROM
A SOUTH UNIT LINE AND BEING
228' FROM THE EAST UNIT LINE.

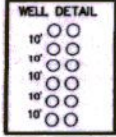
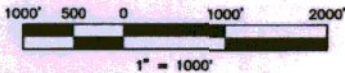
PENETRATION POINT LOC. TXU TRWD N UNIT 10H WELL,
IN THE M. GARCIA SURVEY, A-564
BEING 1275' FROM THE WEST LINE OF SAME
AND ALSO BEING THE EAST LINE OF THE
J. WILCOX SURVEY, A-1712, AND BEING
1512' FROM THE NORTH LINE OF THE
M. GARCIA SURVEY, A-564
BEING THE SOUTH LINE OF THE M. HUNT
SURVEY, A-760, ALSO BEING 915' FROM
A SOUTH UNIT LINE AND BEING 962'
FROM THE EAST UNIT LINE.

BOTTOM HOLE LOC. TXU TRWD N UNIT 10H WELL,
IN THE J. WILCOX SURVEY, A-1709
BEING 389' FROM THE SOUTH LINE OF SAME
AND ALSO BEING THE NORTH LINE OF THE
J. WILCOX SURVEY, A-1712, AND BEING
2786' FROM THE EAST LINE OF THE
J. WILCOX, A-1709, AND BEING
THE WEST LINE OF THE M. HUNT
SURVEY, A-548, ALSO BEING 330' FROM
THE NORTHWEST UNIT LINE AND 1647' FROM
A SOUTHWEST UNIT CORNER.



***** DRIVING DIRECTIONS *****
FROM THE INTERSECTION OF 287 & W. BAILEY BOSWELL RD. (4040)
GO WEST ON W. BAILEY BOSWELL RD. FOR 2.5 MILES
TURN NORTH ONTO BOAT CLUB RD. FOLLOW
BOAT CLUB RD. FOR 4.3 MILES TO LEASE ROAD ON
NORTH SIDE OF ROAD, FOLLOW LEASE ROAD TO PAD.

WELL LOCATION PLAT
XTO ENERGY INC.
TXU TRWD N UNIT 10H
534.33 ACRE POOLED UNIT
TARRANT COUNTY, TEXAS



N.A.D. 27 DATUM
TEXAS NORTH CENTRAL ZONE
** SURFACE LOCATION TXU TRWD N UNIT 10H WELL **
N: 400948.81
E: 2009407.39
LAT: 32°54'13".50
LONG: 97°26'47".88
** PENETRATION POINT TXU TRWD N UNIT 10H WELL **
N: 400730.48
E: 2009407.39
LAT: 32°54'20".23
LONG: 97°26'56".57
** BOTTOM HOLE TXU TRWD N UNIT 10H WELL **
N: 453855.85
E: 2009417.39
LAT: 32°54'19".19
LONG: 97°26'57".10

WALKER & ASSOCIATES SURVEYING, INC.
TYLER, TEXAS PH: 903-534-9000

I, Dennis H. Walker, Registered Professional Land Surveyor do hereby state that this plat was prepared from a partial survey and from public record information and is true and correct to the best of my knowledge.

GIVEN UNDER MY HAND AND SEAL, this 27th day of April, 2007.

By: *Dennis H. Walker*
Dennis H. Walker
Registered Professional Land Surveyor
State of Texas No. 2117



Surface Location is located 1.1 Miles Southeast of KENNEDALE "MANSFIELD" Quadrangle

WA437/11

C.H.J. CHECKED BY W.J.C.

REVISED 05-03-07 J5287

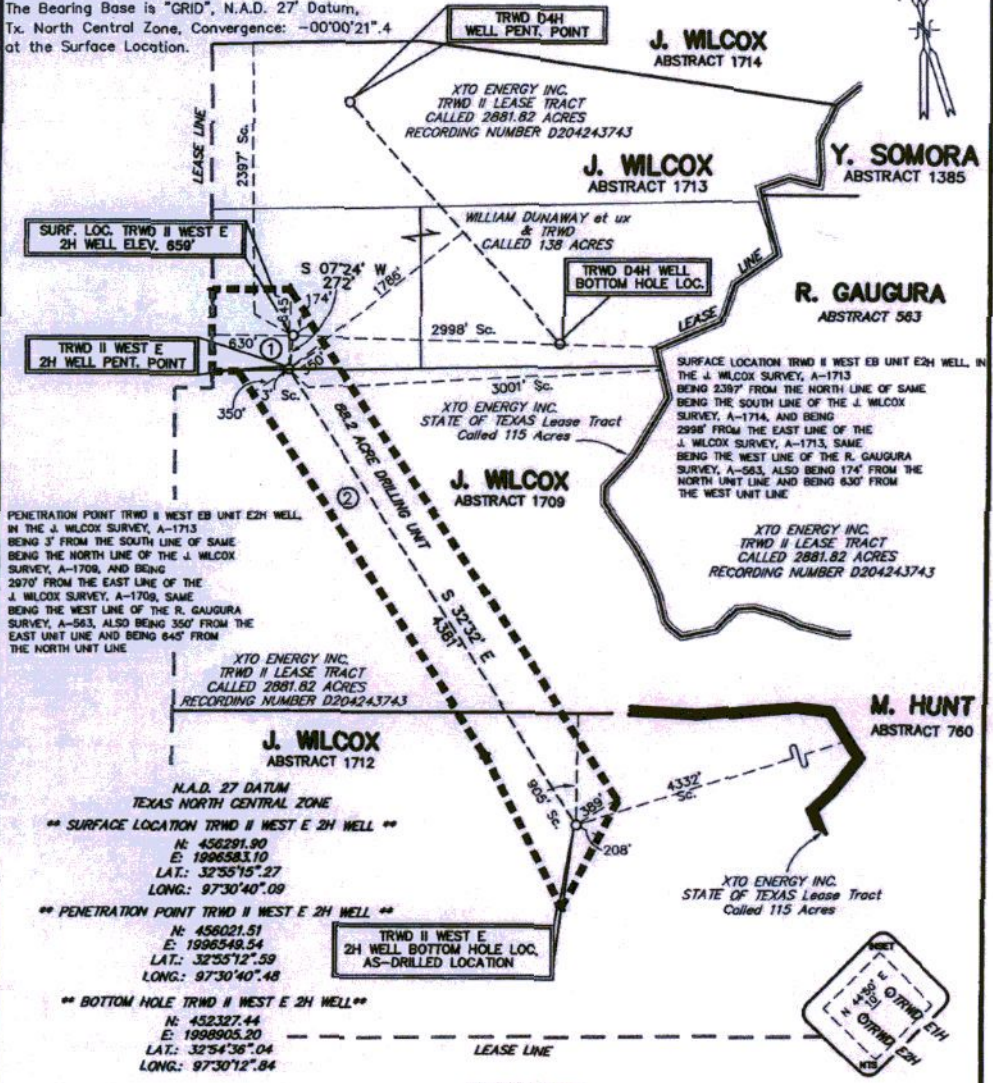
EXHIBIT C

**** NOTES ****

This plot does not represent a boundary survey. Acreages shown hereon are deed called or calculated from deeds furnished by others. Monumentation shown hereon was found. Surface Location ties are shown from the location surveyed 3/12/05. The Bearing Base is "GRID", N.A.D. 27' Datum, Tx. North Central Zone, Convergence: -00°00'21".4 at the Surface Location.

1	- CALLED	12.31 ACRES	DUNAWAY/TRWD
2	- CALLED	75.89 ACRES	TRWD II
88.2 TOTAL CALLED ACRES IN UNIT & DRLO. UNIT			

-00°00'21".4



PENETRATION POINT TRWD II WEST EB UNIT E2H WELL IN THE J. WILCOX SURVEY, A-1713 BEING 3' FROM THE SOUTH LINE OF SAME BEING THE NORTH LINE OF THE J. WILCOX SURVEY, A-1709, AND BEING 2970' FROM THE EAST LINE OF THE J. WILCOX SURVEY, A-1709, SAME BEING THE WEST LINE OF THE R. GAUGURA SURVEY, A-563, ALSO BEING 350' FROM THE EAST UNIT LINE AND BEING 645' FROM THE NORTH UNIT LINE.

**** SURFACE LOCATION TRWD II WEST E 2H WELL ****
 N: 456291.90
 E: 1996583.10
 LAT.: 32°55'15".27
 LONG.: 97°30'40".09

**** PENETRATION POINT TRWD II WEST E 2H WELL ****
 N: 456021.51
 E: 1996548.54
 LAT.: 32°55'12".59
 LONG.: 97°30'40".48

**** BOTTOM HOLE TRWD II WEST E 2H WELL ****
 N: 452327.44
 E: 1998905.20
 LAT.: 32°54'36".04
 LONG.: 97°30'12".84

**WELL LOCATION PLAT
 XTO ENERGY INC.
 TRWD II WEST E 2H WELL
 88.2 ACRE UNIT
 TARRANT COUNTY, TEXAS
 SCALE: 1" = 1000'**

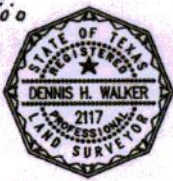
WALKER & ASSOCIATES SURVEYING, INC.
 TYLER, TEXAS PH: 903-534-9000

I, Dennis H. Walker, Registered Professional Land Surveyor do hereby state that this plat was prepared from a partial survey and from public record information and is true and correct to the best of my knowledge.

GIVEN UNDER MY HAND AND SEAL, this the 17th day of May, 2007.

By: *Dennis H. Walker*

Dennis H. Walker
 Registered Professional Land Surveyor
 State of Texas No. 2117



BOTTOM HOLE LOC. TRWD II WEST E 2H WELL, IN THE J. WILCOX SURVEY, A-1712 BEING 905' FROM THE NORTH LINE OF SAME BEING THE SOUTH LINE OF THE J. WILCOX SURVEY, A-1713, AND 4332' FROM THE EAST LINE OF THE J. WILCOX SURVEY, A-1712, SAME BEING THE WEST LINE OF THE M. HUNT SURVEY, A-760, ALSO BEING 389' FROM THE EAST UNIT LINE AND BEING 208' FROM THE SOUTH UNIT LINE.

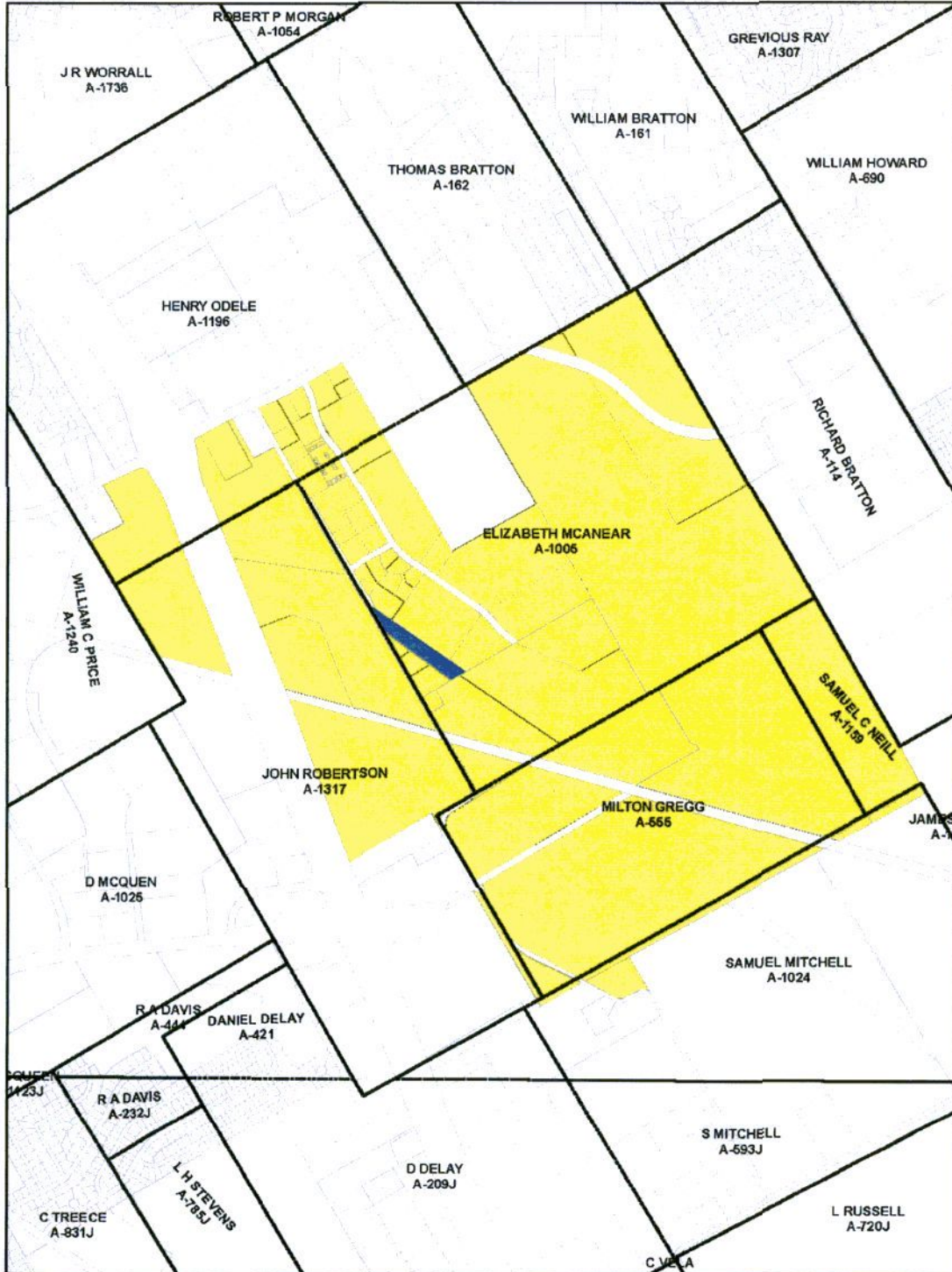
Surface Location is located 2.4 Miles Northeast of Azle "AZLE" Quadrangle


14.


With the recommendation of management, Director Sparks moved to approve a lease to Conglomerate Gas II, L.P. a Texas limited partnership for the amount of \$18,924, 25% royalty, three (3) year primary term for the Water District's mineral interest in 3.154 acres as recorded in Vol. 4611 at Pg. 1968 of the Deed Records of Tarrant County, Texas, and as shown on plat marked Exhibit A.


In addition, Ken Brummett is granted authority to execute the lease and all other documents necessary to complete this transaction. Director Stevens seconded the motion and the vote in favor was unanimous.

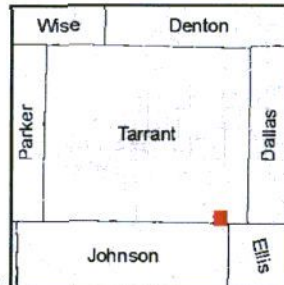
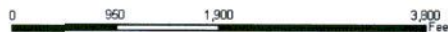

Tarrant County, Texas




CONGLOMERATE GAS 5/4/2007

 TRWD

 CGII Leases



15.

The Board recessed for a break at 10:53 a.m. and reconvened at 11:00 a.m.

16.

The President and presiding officer next called an executive session at 11:00 a.m. under V.T.C.A., Government Code, Chapter 551.071 to consider pending or contemplated litigation - Oklahoma water resources; and under Chapter 551.072 to consider real property issues – Trinity River Vision Central City Project; sale of land at Cedar Creek; and oil and gas issues.

17.

Upon completion of the executive session at 11:20 a.m., the President reopened the meeting.

18.

With the recommendation of management, Director Sparks moved to approve a lease to Four Sevens Resources Co., Ltd., for the amount of \$1,878,198, 26.5% royalty, three (3) year primary term for the Water District's mineral interest in 134.157 net acres, more or less, for those lands described on the attachment.

In addition, Ken Brummett is granted authority to execute the lease and all other documents necessary to complete this transaction. Director Stevens seconded the motion and the vote in favor was unanimous.

**Tarrant County Water District
Legal Description**

134.157 net acres of land, more or less, consisting of the following 22 tracts:

- Tract 1: 8.95 acres of land, more or less, being a part of the deed recorded in Volume 4027, Page 621 of the Deed Records of Tarrant County, Texas.
- Tract 2: 7.91 acres of land, more or less, being a part of that deed recorded in Volume 4027, Page 687 of the Deed Records of Tarrant County, Texas.
- Tract 3: 2.71 acres of land, more or less, being a part of that deed recorded in Volume 4282, Page 199 of the Deed Records of Tarrant County, Texas.
- Tract 4: .52 acres of land, more or less, described in that deed recorded in Volume 4219, Page 621 of the Deed Records of Tarrant County, Texas.
- Tract 5: 16.49 acres of land, more or less, described in that deed recorded in Volume 4219, Page 170 of the Deed Records of Tarrant County, Texas.
- Tract 6: 7.72 acres of land, more or less, described in that deed recorded in Volume 4195, Page 377 of the Deed Records of Tarrant County, Texas.
- Tract 7: 1.3 acres of land, more or less, described in that deed recorded in Volume 3166, Page 473 of the Deed Records of Tarrant County, Texas.
- Tract 8: .42 acres of land, more or less, described in that deed recorded in Volume 4319, Page 143 of the Deed Records of Tarrant County, Texas.
- Tract 9: .17 acres of land, more or less, described in that deed recorded in Volume 4541, Page 115 of the Deed Records of Tarrant County, Texas.
- Tract 10: 13.82 acres of land, more or less, described in that deed recorded in Volume 4719, Page 141 of the Deed Records of Tarrant County, Texas.
- Tract 11: .12 acres of land, more or less, described in that deed recorded in Volume 4296, Page 7 of the Deed Records of Tarrant County, Texas.
- Tract 12: 3.08 acres of land, more or less, described in that deed in Volume 4295, Page 219 of the Deed Records of Tarrant County, Texas.
- Tract 13: 4.54 acres of land, more or less, described in that deed recorded in Volume 4206, Page 630 of the Deed Records of Tarrant County, Texas.
- Tract 14: .06 acres of land, more or less, described in that deed recorded in Volume 4046, Page 607 of the Deed Records of Tarrant County, Texas.
- Tract 15: 9.44 acres of land, more or less, described in that deed recorded in Volume 4043, Page 303 of the Deed Records of Tarrant County, Texas.
- Tract 16: 7.88 acres of land, more or less, described in that deed recorded in Volume 4032, Page 170 of the Deed Records of Tarrant County, Texas.
- Tract 17: 2.00 acres of land, more or less, described as First Tract in that deed recorded in Volume 4085, Page 100 of the Deed Records of Tarrant County, Texas.
- Tract 18: 7.34 acres of land, more or less, described in that deed recorded in Volume 2414, Page 585 of the Deed Records of Tarrant County, Texas.
- TRACT 19: 12.699 ACRE TRACT OF LAND, MORE OR LESS, SITUATED IN THE ROBERT BISSETT SURVEY, ABSTRACT NO. 193, TARRANT COUNTY, TEXAS, AND BEING MORE PARTICULARLY DESCRIBED BY METES AND BOUNDS BY DEED RECORDED IN VOLUME 4479, PAGE 948, DEED RECORDS, TARRANT COUNTY, TEXAS.
- TRACT 20: 12.893 ACRE TRACT OF LAND, MORE OR LESS, SITUATED IN THE ROBERT BISSETT SURVEY, ABSTRACT NO. 193, TARRANT COUNTY, TEXAS, AND BEING MORE PARTICULARLY DESCRIBED BY METES AND BOUNDS BY DEED RECORDED IN VOLUME 4228, PAGE 3, DEED RECORDS, TARRANT COUNTY, TEXAS.
- TRACT 21: 13.820 ACRE TRACT OF LAND, MORE OR LESS, SITUATED IN THE JOHN KINDER SURVEY, ABSTRACT NO. 893, TARRANT COUNTY, TEXAS, AND BEING MORE PARTICULARLY DESCRIBED BY METES AND BOUNDS BY DEED RECORDED IN VOLUME 4719, PAGE 141, DEED RECORDS, TARRANT COUNTY, TEXAS.
- Tract 22: .55 acres of land, more or less, described in that deed recorded in Volume 4122, Page 591 of the Deed Records of Tarrant County, Texas. SAVE AND EXCEPT AN undivided ½ of all the oil, gas, and other minerals and recorded in Volume 2870, Page 146 of the Deed Records of Tarrant County, Texas.

GROSS AC. 134.432 NET AC. 134.157

SURFACE ONLY:

- Tract 1** 1.76 acres of land, more or less, described in that deed recorded in Volume 4046, Page 604 of the Deed Records of Tarrant County, Texas. Save and Except an undivided ½ of all the oil, gas, and other minerals and recorded in Volume 2870, Page 146. Save and Except an undivided ½ of all the oil, gas, and other minerals and recorded in Volume 4046, Page 604
- Tract 2:** 51.20 acres of land, more or less, described in that deed in Volume 4046, Page 602 of the Deed Records of Tarrant County, Texas. Save and Except an undivided ½ of all the oil, gas, and other minerals and recorded in Volume 2870, Page 146. Save and Except an undivided ½ of all the oil, gas, and other minerals and recorded in Volume 4046, Page 602

19.

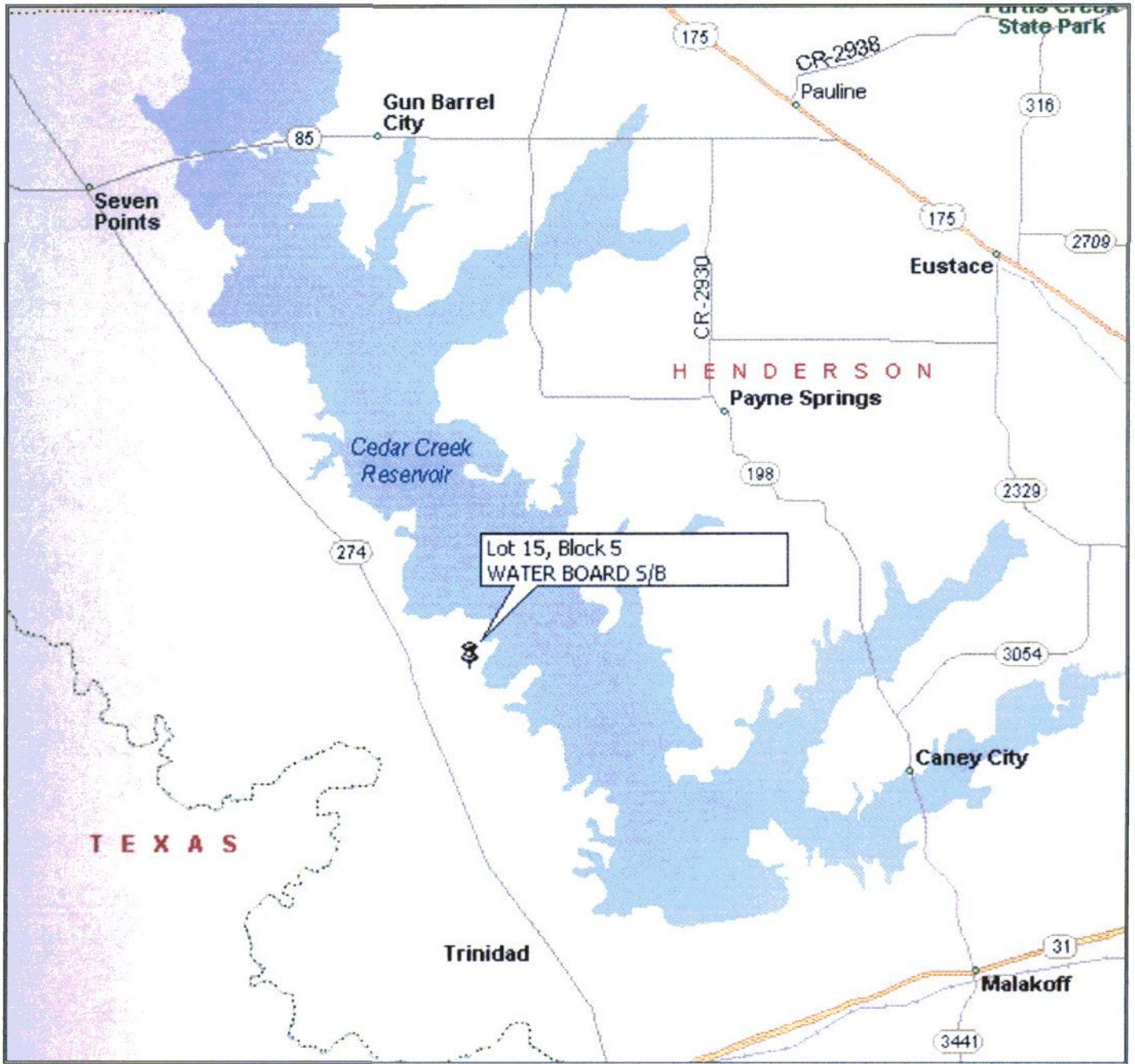
With the recommendation of management, Director Sparks moved to approve a modification to the contract with TranSystems Corporation to survey an additional 20 parcels at an additional cost of \$116,325 to the original contract of \$82,685 for a total cost not to exceed \$199,010. Funding for this contract modification is included in the FY 2007 General Fund Budget. Director Stevens seconded the motion and the vote in favor was unanimous.

20.

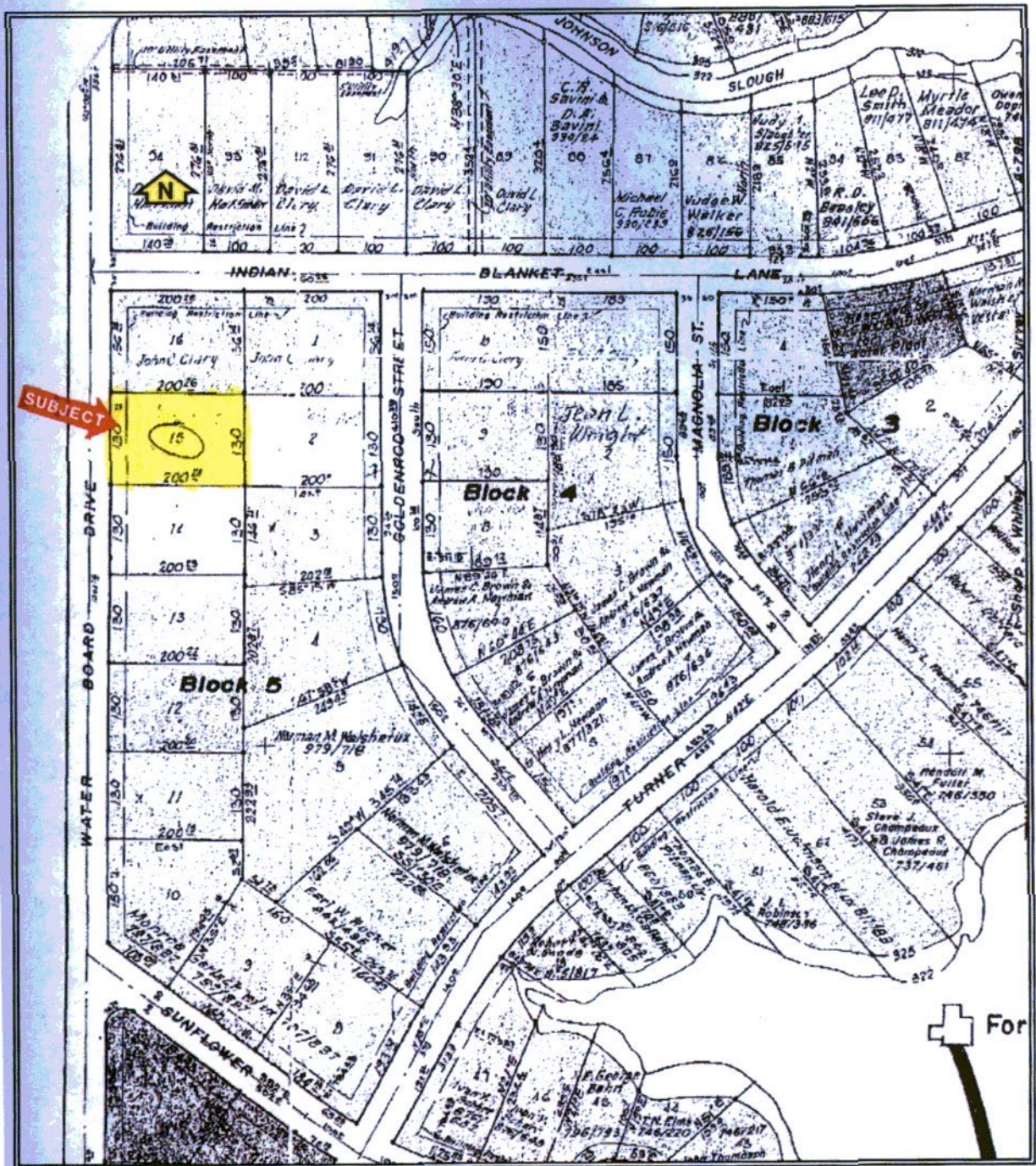
With the recommendation of management, Director Sparks moved to approve the sale of the following described tract of land to Judith M. Northrup for the bid of \$10,601.

Lot 15, Block 5 of the Water Board Subdivision in Henderson County, Texas

Vicinity Map



Subdivision Plat



In addition, R. Steve Christian is granted authority to execute the deed and all other documents necessary to complete this transaction. Director Leonard seconded the motion and the vote in favor was unanimous.

21.

Staff reports were next presented which included:

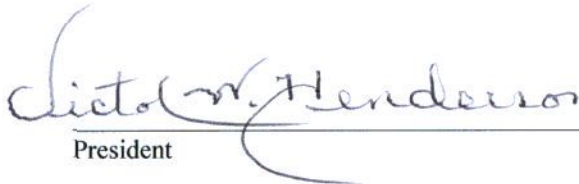
Legislation

Water Conservation Efforts with Tarrant County

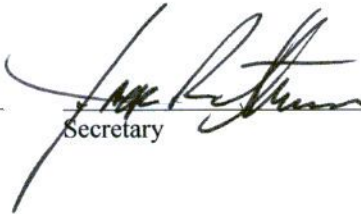
Video presentation covering cable TV ads on Water Conservation

22.

There being no further business before the Board of Directors, the meeting was adjourned.



President



Secretary