



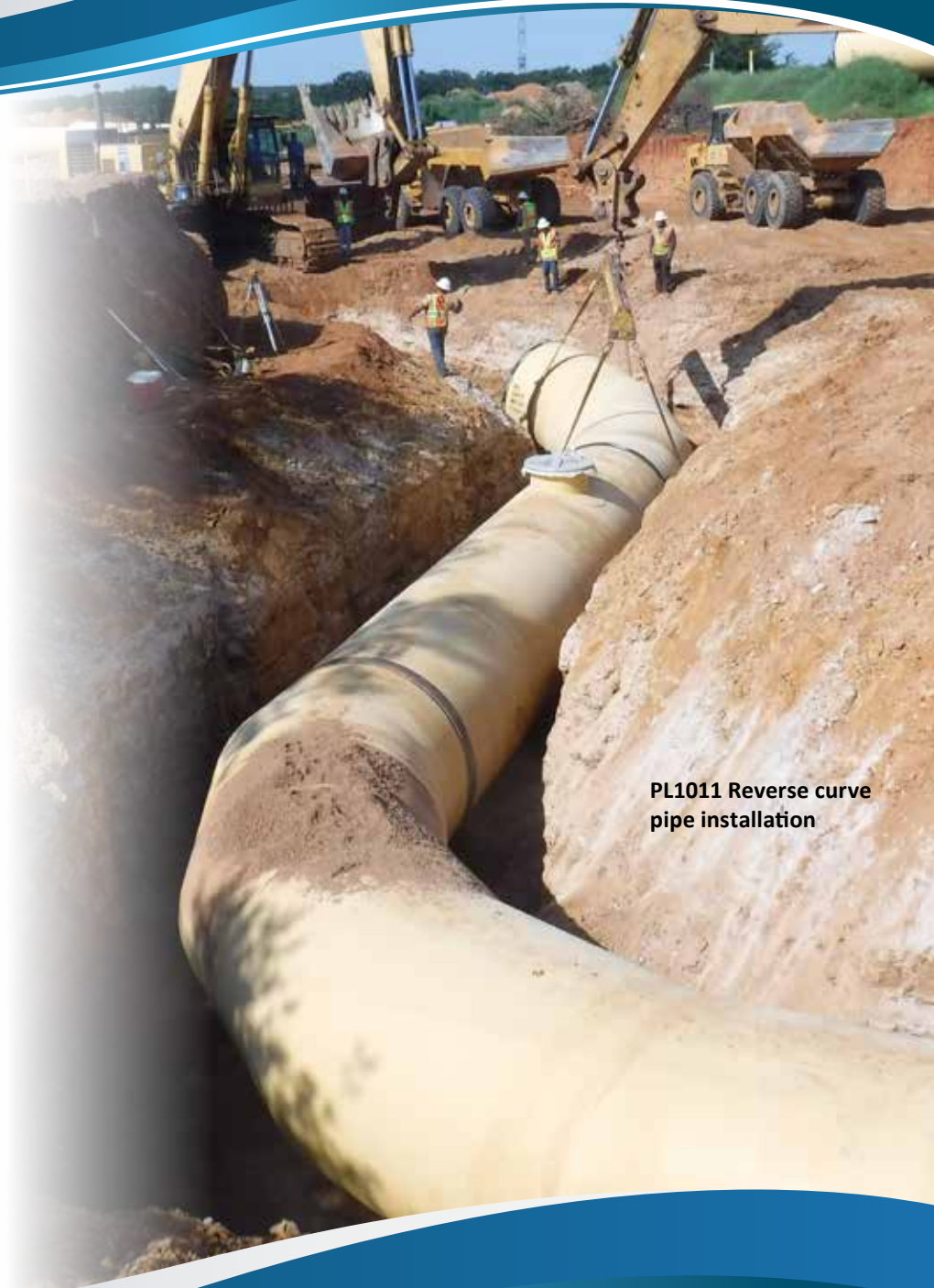
INTEGRATED PIPELINE PROJECT MONTHLY EXECUTIVE SUMMARY

June 2017

TARRANT REGIONAL WATER DISTRICT (TRWD) and the **CITY OF DALLAS WATER UTILITIES (DWU)** have partnered to finance, plan, design, construct and operate the Integrated Pipeline (IPL) Project. The IPL Project is an integrated water delivery transmission system connecting Lake Palestine to Lake Benbrook with connections to Cedar Creek and Richland-Chambers Reservoirs integrating TRWD's existing pipelines and creating flexibility in delivery as well as quick response to fluctuating customer water demands. The IPL Project consists of 150 miles of pipeline, three new lake pump stations, and three new booster pump stations delivering a required capacity of 350 million gallons per day (MGD) of raw water to North Central Texas. TRWD and DWU currently serve over 4.1 million residents and the IPL will allow these agencies to continue supporting regional community and economic growth.

IPL PROGRAM MANAGEMENT

Tarrant Regional Water District
804 East Northside Drive
Fort Worth, TX 76102
817.720.4469 p
817.720.4397 f
iplproject.com
@IPL_Project



**PL1011 Reverse curve
pipe installation**

PROGRAM SUPPORT SERVICES

as of 06.30.17

CONTRACT DESIGN AND CONSTRUCTION	DESCRIPTION	BUDGET	CONTRACTS ISSUED	TOTAL INVOICED
PROGRAM WIDE PROFESSIONAL SERVICES		\$133,061,000	\$88,176,189	\$83,984,278
Program Management	Overall program management services for implementation of the IPL Project. (Extension of TRWD staff)	\$45,000,000	\$35,124,711	\$35,124,711
Conceptual Design / Environmental / Permitting	Operations plan & Prepare 404 permit application, Envision Application Completion	\$13,551,000	\$13,472,389	\$13,133,195
Value Engineering	Expert review of design	\$640,000	\$472,248	\$472,248
Surveying and Mapping	Control, property survey, legal descriptions, and Provide SUE Level A Survey, GIS	\$14,600,000	\$11,858,055	\$10,458,287
Geotechnical	Initial Characterization of entire IPL Project	\$12,037,000	\$12,026,275	\$12,026,276
Corrosion Engineering Services	Engineering Corrosion Control	\$3,891,000	\$5,326,362	\$4,062,451
Land, Easement Acquisition, & Support Studies	Right of Entry and Land Acquisition Support Services	\$33,993,000	\$3,464,526	\$3,420,094
		\$3,500,000	\$3,583,743	\$3,402,626
SCADA System	Engineering of SCADA system	\$640,000	\$1,325,096	\$415,780
Microwave System	Engineering of Communications System	\$5,210,000	\$1,522,785	\$1,468,609
DESIGN		\$152,839,000	\$128,150,350	\$115,441,511
Completed		\$101,901,000	\$95,701,764	\$95,153,466
Active		\$24,159,000	\$31,910,169	\$20,288,045
CH2M Hill	Project Operational Information and Operations Manual		\$3,044,922	\$2,503,293
CH2M Hill	Final Conformance of Design of JCC1	\$728,000	\$2,861,718	\$1,546,301
MWH	Final Conformance of Design of Section 9/10/11	\$506,000	\$812,562	\$533,231
Black & Veatch	Final Design of Section 12/13/14 - 28.1 miles of 84 - inch and 108 - inch pipeline	\$11,292,000	\$9,712,413	\$9,651,306
Parsons	Final Conformance of Design of Sections 17/18/Tunnel	\$832,000	\$579,753	\$681,545
Brown & Gay	Final Design of Section 19-1	\$5,770,000	\$7,003,722	\$1,666,984
HDR	Final Design of Section 19-2	\$5,030,000	\$6,989,876	\$2,946,842
Burns & McDonnell Trans. Mgmt.	Development of Transportation Management Plan		\$905,203	\$758,544
Remaining		\$26,778,000	\$538,417	
CONSTRUCTION ADMINISTRATION		\$48,877,000	\$18,934,867	\$10,186,641
CONSTRUCTION / OWNER FURNISHED EQUIPMENT		\$1,729,540,000	\$632,139,489	\$460,238,465
Completed		\$26,677,000	\$20,593,942	\$20,377,238
Active		\$811,918,000	\$611,545,547	\$439,861,227
Pipeline Section 15-1		\$115,112,000	\$94,409,665	\$93,066,335
Garney Construction	Construction of Section 15-1	\$115,112,000	\$94,409,665	\$93,066,335
JB3		\$83,013,000	\$74,443,285	\$51,535,796
MWH Constructors	Construction of JB3 Pump Station	\$51,473,000	\$57,026,472	\$38,958,212
Oncor Electric	Installation of JB3 Substation Transmission Lines	\$1,066,000	\$957,119	\$923,119
Isolux Corsan	Construction of JB3 Substation	\$7,400,000	\$4,864,888	\$4,864,888
R E Monks	Construction of JB3R Restoration	\$0	\$336,623	\$336,623
Pentair Flow Technologies	Construction of JB3 Pumps, Motors, Drives	\$23,074,000	\$11,258,183	\$6,452,954
Pipeline Section 12/13/MBR/IB4 Bypass		\$167,993,000	\$153,961,329	\$139,385,023
Thalle Midlothian	Construction of Sections 12/13/MBR/IB4 Bypass	\$146,310,000	\$143,270,617	\$130,009,046
BAR Constructors	Construction of Richland-Chambers/Cedar Creek Interconnection Facility	\$21,682,000	\$10,566,482	\$9,251,747
Hilco Electric	Relocation of Electrical Service Lines		\$0	
Hilco Electric	MBR Radio Tower Power		\$33,312	\$33,312
Oncor Electric	Provide Power to IPL 2X12		\$90,918	\$90,918

PROGRAM SUPPORT SERVICES

as of 06.30.17

CONTRACT DESIGN AND CONSTRUCTION	DESCRIPTION	BUDGET	CONTRACTS ISSUED	TOTAL INVOICED
Pipeline Section 15-2		\$97,217,000	\$52,991,575	\$48,380,203
BAR Constructors	Construction of Section 15-2	\$97,217,000	\$52,991,575	\$48,380,203
Pipeline Section 14		\$107,113,000	\$48,323,709	\$43,284,910
Garney Construction	Construction of Section 14	\$107,113,000	\$48,323,709	\$43,284,910
Pipeline Section 17		\$109,944,000	\$78,320,314	\$21,632,121
IPL Partners	Construction of Section 17 Tunnel	\$12,252,000	\$32,992,000	\$11,236,361
Thalle Midlothian	Construction of Sections 17	\$97,692,000	\$45,328,314	\$10,395,760
JCC1		\$42,683,000	\$37,709,676	\$5,245,005
BAR Constructors	Construction of JCC1 Intake	\$21,564,000	\$19,743,852	\$5,245,005
Ebara	Construction of JCC1 Pumps, Motors, Drives	\$17,775,000	\$12,694,890	\$0
Oncor Electric	Construction of JCC1 HV Transmission Lines	\$3,343,000	\$5,270,933	\$0
Pipeline Section 10/11		\$73,678,000	\$56,817,456	\$28,435,764
IPL Partners	Construction of Section 10/11	\$72,362,000	\$43,160,004	\$28,418,312
Oncor Electric	Construction of KBR S1X10 HV Transmission Lines	\$0	\$17,452	\$17,452
BAR Constructors	Construction of KBR S1X10	\$1,317,000	\$13,640,000	\$0
Valve Packages		\$15,165,000	\$14,568,537	\$8,896,071
Garney Construction	Valve Package 1 - Section 15-1 Butterfly Valves	\$518,000	\$262,244	\$262,244
Rodney Hunt	Valve Package 2 - Section 15-1 Interconnection Facility Valves	\$474,000	\$733,206	\$664,995
Blackhall Engineering	Valve Package 3 - JB3, Section 15-2, MBR Yard Gate Valves	\$5,500,000	\$6,278,387	\$4,940,197
Crispin Valves	Valve Package 4 - Section 12 RC/CC Interconnection, JB4 Bypass, MBR Yard Butterfly Valves	\$3,999,000	\$2,269,140	\$1,632,612
Crispin Valves	Valve Package 5 - JB3 Butterfly Valves	\$1,249,000	\$1,249,222	\$867,122
Ross Valves	Valve Package 6 - Section 12 RC/CC Interconnection Multi-Orifice Valves	\$715,000	\$526,340	\$352,005
Crispin Valves	Valve Package 8 - Section 10 & 11 Bypass Butterfly Valves	\$1,391,000	\$1,461,040	\$0
Blackhall Engineering	Valve Package 11 - JCC1 Gate Valve	\$1,320,000	\$1,788,958	\$176,896
Remaining		\$890,944,000		
CONSTRUCTION MANAGEMENT		\$65,169,000	\$45,397,801	\$26,330,847
Completed		\$15,777,000	\$15,687,599	\$15,687,599
Active		\$17,665,000	\$29,710,201	\$10,643,247
Remaining		\$31,728,000		
CONSTRUCTION MATERIALS TESTING		\$17,295,000	\$12,873,125	\$5,280,073
Completed		\$203,000	\$225,133	\$225,132
Active		\$7,791,000	\$12,647,992	\$5,054,941
Remaining		\$9,302,000		
ROCIP		\$2,575,000	\$23,366,510	\$18,691,241
LAND COST		\$107,384,000	\$56,542,707	\$56,542,707
PROGRAM LEVEL CONTINGENCY		\$83,178,000		
MISCELLANEOUS		\$2,000,000	\$2,310,291	\$2,310,291
GRAND TOTAL		\$2,341,918,000	\$1,007,891,328	\$779,006,054
REMAINING BOND FUNDS				\$470,993,946

Note: Total Bonds issued to date \$1,250,000,000

ACCOMPLISHMENTS

through 07.31.17

PL15-1 (Pipeline Section 15-1 including the S5X15 Richland-Chambers Pipeline Interconnect Facility)

- S5X15 interconnect and the 15-1 pipeline are being operated to provide testing water to the PL15-2 project.
- Installing security gate at entrance from County Road 0190.
- Continue seeding, sprigging and cleanup along ROW.
- Change Order 0009 extended the contract Final Completion date to 2018/01/29.

JB3R (Pump Suction Reservoir for JB3 Pump Station)

- PROJECT COMPLETE.

JB3RR (Pump Suction Reservoir Grading and Grassing Project)

- Continue irrigation, mowing and maintenance of embankment slopes.

PL12, 13, MBR (Pipeline Sections 12 and 13 combined with the Midlothian Balancing Reservoir)

- Hydrostatic pressure testing passed on all of Sections 12 and 13.
- Soil cement is complete in Cells 1 and 2 and 90% complete in Cell 3.
- Continue installing pipeline ROW fences and gates and fencing at MBR.

COM01 (Microwave Towers and Communication Facilities for SCADA Control of the IPL)

- PROJECT COMPLETE.

JB3 (250mgd Pump Station expandable to 350mgd)

- Completed standing seam metal roof on pump room.
- Electrical switchgear inspection was completed by the manufacturer.
- HVAC air handling units and chillers were delivered and HVAC installation is continuing.
- Installing pump discharge piping from Venturi Flowmeters to Pump Station.

PL15-2 (Pipeline Section 15-2 that feeds the JB3 Reservoir)

- Entire pipeline passed hydrostatic pressure test and removal of test plugs is in progress.
- Installing ROW fences and gates and installing security fencing at 108" Gate Valve vault location.
- Continue installation of cable mats at creek crossings and Cathodic Protection test stations.

S2X12 (Interconnection Facility of IPL Phase 1 to existing Cedar Creek and Richland Chambers Pipelines)

- Continue installation of perimeter screen wall panels.
- Utility power was energized and electrical work continued inside interconnect building.

JB3HV (High Voltage Substation for the JB3 Pump Station and Data Center)

- PROJECT COMPLETE.

PL14 (Pipeline Section 14 that delivers water from JB3 Pump Station to MBR)

- Continue grouting inside pipe joints.
- Continue installing vaults at air valves and blow-offs and continue spoil removal and ROW restoration.

PL17TUN (Trinity River Tunnel on Pipeline Section 17)

- Continue tunneling from west to east; 695 l.f. of tunnel installed.
- Continue excavating receiving portal at east end of tunnel and begin portal excavation at west end.
- Continue receiving 108" pipe for open-cut portions of the project.

JCC1IN (Intake Structure and Wet Well for JCC1 Pump Station at Cedar Creek)

- Continue excavation and placing seal-slab concrete in preparation of pier drilling.
- Continue well-point dewatering of the work area.
- Continue pre-tying rebar cages for drilled piers at intake structure and installing cross-sonic testing tubes.

PL10, 11 (Pipeline Sections 10 and 11 from the JB4 Pump Station to the KBR Pressure Reduction Facility)

- Completed Section 10 pipe installation and installed 5,300 l.f. of Section 11 and 1,860 l.f. at JB4.
- Installing 84" carrier pipe in gas line crossing tunnel and began tunnel at FM157.
- Clean-up crew working on vault installation and ROW restoration as pipeline sections are completed.

PL17-18 (Pipeline Sections 17 and 18 from east end of PL15-1 to JCC1 Pump Station)

- Completed 80% of tunnel under wetlands area.
- Continue installing silt fence, rock dams, etc. in accordance with SWPPP document.
- Topsoil stripping is complete on Henderson County portion and 70% of Navarro County ROW is cleared..
- Continue installing temporary fences and gates.

KBRPRS / S1X10 (Pressure Reduction Station at Kennedale Balancing Reservoir connecting Pipeline Section 10)

- Installed silt fence and other SWPPP measures.
- Installed driveway from Hudson Cemetery Rd.
- Removed trees and debris and stripped topsoil from facility location.

OFE03 (Owner-Furnished 108" Gate Valves)

- GV#3 passed factory acceptance testing.
- Completing final machining of mating surfaces on GV#4.

OFE04/05 (Owner-Furnished 54", 60" and 108" Butterfly Valves)

- All valves have been delivered.

OFE06 (Owner-Furnished Multi-Orifice Valves for S2X12)

- Valves delivered and installed, awaiting facility start-up.

OFE07 (Owner-Furnished pumps, motors and variable frequency drives for JB3)

- No additional deliveries to the site or factory testing performed this month.

OFE08 (Owner-Furnished 66", 84" and 108" Butterfly Valves)

- Reviewing submittals for 108" BFVs.

OFE09 (Owner-Furnished pumps, motors and variable frequency drives for JCC1)

- Reviewing submittals for pump package.

OFE11 (Owner-Furnished 108" Gate Valve)

- Reviewing submittals received from Blackhall.



PL1718 Spinning cement mortar lining in 108-inch pipe

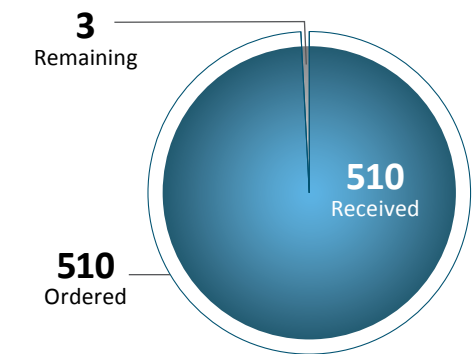


JB3 HVAC air handling unit

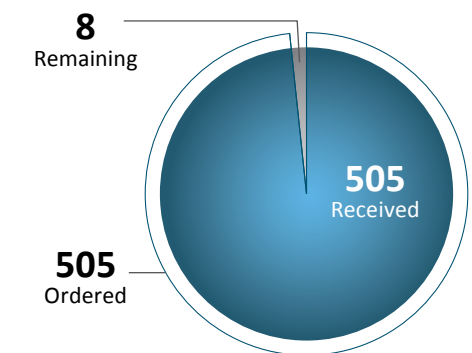
ACTIVITY STATUS

as of 07.31.17

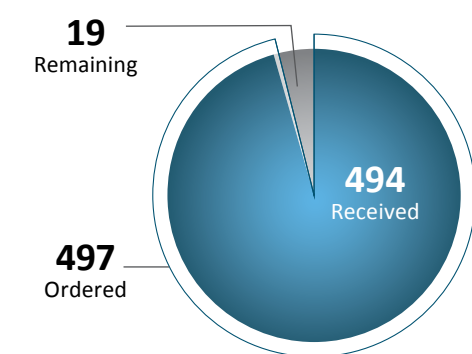
TITLE COMMITMENTS



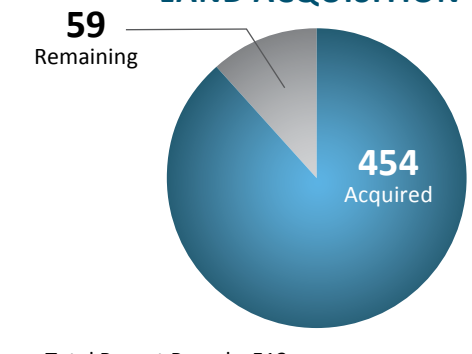
SURVEYS



APPRAISALS



LAND ACQUISITION



Total Parent Parcels: 513

PROJECT SCHEDULE

PROJECT COMPONENTS	2014				2015				2016				2017				2018			
	Q1	Q2	Q3	Q4	Q1	Q2	Q3	Q4	Q1	Q2	Q3	Q4	Q1	Q2	Q3	Q4	Q1	Q2	Q3	Q4
SECTION 15-1 CONSTRUCTION																				
SECTIONS 12, 13, MBR CONSTRUCTION																				
JB3 CONSTRUCTION																				
SECTION 15-2 CONSTRUCTION																				
SECTION 14 CONSTRUCTION																				
S2X12 (INTERCONNECTION FACILITY) CONSTRUCTION																				
SECTION 17 TUNNEL CONSTRUCTION																				
JCC1 PUMP STATION INTAKE, WET WELL CONSTRUCTION																				
SECTION 10, 11 CONSTRUCTION																				
SECTION 17, 18 CONSTRUCTION																				
KBRPRS/S1X10 (PRESSURE REDUCTION STA.) CONSTRUCTION																				

M/WBE PARTICIPATION

as of 06.30.17

CONTRACT DESIGN AND CONSTRUCTION	M/WBE & HUB SUB-CONTRACTORS	CONTRACT COMMITMENT		M/WBE HUB INVOICED TO DATE		TOTAL PROJECT COMPLETED TO DATE	
		\$	%	\$	% (PER COMMITMENT)	\$	%
PROGRAM WIDE PROFESSIONAL SERVICES		\$20,085,060	23%	\$19,637,934	98%	\$83,984,278	95%
Program Management		\$6,636,687	19%	\$6,636,687	100%	\$35,124,711	100%
Conceptual Design / Environmental / Permitting		\$2,700,278	20%	\$2,795,613	104%	\$13,133,195	97%
Value Engineering		\$23,178	5%	\$23,178	100%	\$472,248	100%
Surveying and Mapping		\$3,939,403	33%	\$3,831,616	97%	\$10,458,287	88%
Geotechnical		\$3,545,033	29%	\$3,545,033	100%	\$12,026,276	100%
Corrosion Engineering Services		\$1,053,764	20%	\$761,434	72%	\$4,062,451	76%
Land, Easement Acquisition, & Support		\$1,294,837	37%	\$1,520,794	117%	\$3,420,094	99%
Studies		\$41,717	1%	\$41,717	100%	\$3,402,626	95%
SCADA System		\$384,444	29%	\$32,208	8%	\$415,780	31%
Microwave System		\$465,719	31%	\$449,654	97%	\$1,468,609	96%
DESIGN		\$33,817,272	26%	\$30,864,854	91%	\$115,441,511	90%
Completed		\$26,158,041	27%	\$25,980,682	99%	\$95,153,466	99%
Active		\$7,659,231	24%	\$4,884,173	64%	\$20,288,045	64%
CH2M Hill (Ops Manual)	NDM	\$479,674	16%	\$484,209	101%	\$2,503,293	82%
CH2M Hill (JCC1)	JQ, Gupta, APM, HVJ, XENCO	\$721,484	25%	\$425,596	59%	\$1,546,301	54%
MWH	Garzabury, Kevin Sloan	\$226,705	28%	\$136,372	60%	\$533,231	66%
Black & Veatch	BDS, CAS, JQ, TME	\$2,425,531	25%	\$2,577,758	108%	\$9,651,306	100%
Parsons	Criado, EPB, HVJ	\$144,938	25%	\$112,357	78%	\$681,545	118%
Brown & Gay	AZB, TME, Lamb-Star, NDM	\$1,750,930	25%	\$418,590	24%	\$1,666,984	24%
HDR	AZB, Daltech, Word Wizards, Gupta	\$1,747,469	25%	\$613,819	35%	\$2,946,842	42%
Burns & McDonnell Trans. Mgmt.	Lamb-Star Engineering	\$162,500	18%	\$115,472	71%	\$758,544	84%
Remaining		\$0	0%	\$0	0%	\$0	0%
CONSTRUCTION ADMINISTRATION		\$4,533,806	24%	\$2,351,199	52%	\$10,186,641	54%
CONSTRUCTION / OWNER FURNISHED EQUIPMENT		\$81,191,833	19%*	\$72,523,990	89%	\$460,238,465	73%
Completed		\$4,380,098	22%	\$4,091,050	93%	\$20,377,238	99%
Active		\$76,811,735	22%*	\$68,432,940	89%	\$439,861,227	72%
Pipeline Section 15-1		\$9,415,226	28%*	\$6,650,966	71%	\$93,066,335	99%
Garney Construction	Danridge, SYB, Ricochet, Glenko, Carrasco, Cowboy, Gorrondona, Custom Fence, LKT, Astro Johnny, Pam, Father & Son, Bowden's Erosion	\$9,415,226	28%*	\$6,650,966	71%	\$93,066,335	99%
JB3		\$15,056,385	27%*	\$9,920,230	66%	\$51,535,796	69%
MWH Constructors	Statewide, Cowboy, TX Enviro, Champion, Ram Tool, Rent-a-Fence, Soto Steel, A-Star, Ike, Greystone, LKT, Accurate, Green Scaping	\$13,580,000	27%*	\$8,470,310	62%	\$38,958,212	68%
Isolux Corsan	Dyna Grid	\$1,476,385	30%	\$1,449,920	98%	\$4,864,888	100%
R E Monks		\$0	0%	\$0	0%	\$336,623	100%
Oncor Electric		\$0	0%	\$0	0%	\$923,119	96%
Pentair Flow Technologies		\$0	0%	\$0	0%	\$6,452,954	57%
Pipeline Section 12/13/MBR/JB4 Bypass		\$22,054,002	24%*	\$20,649,275	94%	\$139,385,023	91%
Thalle Midlothian	LKT, Statewide, Granados, Desert Steel, Ettl, Glenko, A.N.A., Edwards, Buzz, Bradley-Douglas, Pinnacle	\$21,209,810	27%*	\$15,649,970	74%	\$130,009,046	91%

M/WBE PARTICIPATION

as of 06.30.17

CONTRACT DESIGN AND CONSTRUCTION	M/WBE & HUB SUB-CONTRACTORS	CONTRACT COMMITMENT		M/WBE HUB INVOICED TO DATE		TOTAL PROJECT COMPLETED TO DATE	
		\$	%	\$	% (PER COMMITMENT)	\$	%
BAR Constructors	Fraire's, DFW Aggregates, Ricochet, MMG, LKT, Brock, Garland Heating & Air, Texas Metal, Buzz, Rangel	\$844,192	8%	\$4,999,305	592%	\$9,251,747	88%
Hilco Electric		\$0	0%	\$0	0%	\$0	0%
Hilco Electric		\$0	0%	\$0	0%	\$33,312	100%
Oncor Electric		\$0	0%	\$0	0%	\$90,918	100%
Pipeline Section 15-2		\$4,122,200	15%*	\$18,622,991	452%	\$48,380,203	91%
BAR Constructors	Ricochet, Fraire's, DFW Aggregates, Brock, Tidy Toilets, KDAT, Juan Cantu, Buyer's, RAM, Rangel, LKT, Greenscaping, Environmental Safety	\$4,122,200	15%	\$18,622,991	452%	\$48,380,203	91%
Pipeline Section 14		\$6,081,897	22%*	\$6,331,481	104%	\$43,284,910	90%
Garney Construction	AEA, Gorrondona, JC Welding, LKT, Statewide, Bowdens	\$6,081,897	22%	\$6,331,481	104%	\$43,284,910	90%
Pipeline Section 17		\$11,985,025	24%*	\$858,135	7%	\$21,632,121	28%
IPL Partners	LKT, Industry Junction, Eagle Aggregate, Suncoast Res, ATS Drilling, RECS, ANA, Alliance, Ram, JC Welding, Luis Moreno	\$6,623,125	24%	\$855,481	13%	\$11,236,361	34%
Thalle Midlothian	Fleet Lube, Rambo Controls, AE Trucking, MKI Construction, Stome Water Management, Industry Junction, Ortega Land Clearing	\$5,361,900	25%	\$2,654	0%	\$10,395,760	23%
JCC1		\$1,001,750	4%*	\$4,464,850	446%	\$5,245,005	14%
BAR Constructors	Industry Junction, K&A Steel, Ricochet Fuel, Ricochet Fuel, Tidy Toilets, Buzz Custom Fence	\$1,001,750	6%	\$4,464,850	446%	\$5,245,005	27%
Ebara		\$0	0%	\$0	0%	\$0	0%
Oncor Electric		\$0	0%	\$0	0%	\$0	0%
Pipeline Section 10/11		\$7,095,250	20%*	\$935,012	13%	\$28,435,764	50%
IPL Partners	LKT, Industry Junction, Eagle Aggregate, Suncoast Res, ATS Drilling, RECS, ANA, Alliance, Ram, JC Welding, Luis Moreno	\$5,675,000	25%	\$935,012	16%	\$28,418,312	66%
Oncor Electric		\$0	0%	\$0	0%	\$17,452	100%
BAR Constructors	Industry Junction, VSG Trucking, Ricochet, MMG Disposal, Garland HVAC, CMC Rebar, Buzz Custom Fence, K&A Steel, Rangle Land Surveying	\$1,420,250	11%	\$0	0%	\$0	0%
Valve Packages		\$0	0%	\$0	0%	\$8,896,071	61%
CONSTRUCTION MANAGEMENT		\$18,613,186	41%	\$10,621,658	57%	\$26,330,847	58%
Completed		\$5,928,804	38%	\$5,954,412	100%	\$15,687,599	100%
Active		\$12,684,383	43%	\$4,667,246	37%	\$10,643,247	36%
CONSTRUCTION MATERIALS TESTING		\$7,603,296	59%	\$2,434,924	32%	\$5,280,073	41%
Completed		\$219,036	97%	\$219,036	100%	\$225,132	100%
Active		\$7,384,260	58%	\$2,215,888	30%	\$5,054,941	40%
ROCIIP		\$1,499,307	6%	\$259,175	17%	\$18,691,241	80%
TOTAL		\$167,343,761	25%*	\$138,753,133	83%	\$720,153,056	76%
LAND COST				\$59,400		\$56,542,707	53%
MISCELLANEOUS						\$2,310,291	
GRAND TOTAL		\$167,343,761	25%*	\$138,753,133	83%	\$779,006,054	77%

M/WBE/HUB Invoiced	\$138,753,133
Grand Total Invoiced	\$779,006,054
** Exclusions Invoiced	\$270,300,692
MWBE %	27.28%

* Denotes participation percentage excluding cost of pipe and owner furnished equipment.

** This number excludes owner furnished equipment, large diameter pipe and land cost \$270,300,692.

PROJECT COMPONENTS

PIPELINE SEGMENTS	CORE PROJECT	DESCRIPTION
Section 9		KBR Turn-Out Tee to existing Benbrook Connection Pipeline (10.6 mi. 84" dia. Pipe + 5 mi. 120" Tunnel)
Section 10	◆	KBR Turn-Out Tee to KBR (2.4 mi. 84" dia. Pipe)
Section 11	◆	JB4 to KBR Turn-Out Tee (10 mi. 84" dia. Pipe)
Section 12	◆	JB4 to existing CC and RC Pipelines (2.2 mi. 108" dia. Pipe)
Section 13	◆	MBR2 (Midlothian Balancing Reservoir) to JB4 (11 mi. 108" dia. Pipe)
Section 14	◆	JB3 to MBR2 (Midlothian Balancing Reservoir) (14.9 mi. 108" dia. Pipe)
Section 15	◆	JB2 to JB3 (28.5 mi 108" dia. Pipe)
Section 16		JRC1 (Joint Richland Chambers Lake Pump Station) to JB2 (12.3 mi. 96" dia. Pipe)
Section 17	◆	Cedar Creek Connection to JB2 (11.2 mi. 108" dia. Pipe)
Section 18	◆	JCC1 (Joint Cedar Creek Lake Pump Station) to Cedar Creek Connection (0.2 mi. 108" dia. Pipe)
Section 19		LP1 (Lake Palestine Pump Station) to Cedar Creek Connection (42.3 mi. 84" dia. Pipe)

PUMP STATIONS	CORE PROJECT	DESCRIPTION
Palestine Pump Station		150 mgd with new intake
Cedar Creek Pump Station	◆	277 mgd with new intake
Richland Chambers Pump Station		250 mgd Ultimate Design Capacity
Booster Pump Stations		Two @ 347 mgd and one @ 197 mgd (◆ one 347 mgd station - JB3)

SUPPORT FACILITIES	CORE PROJECT	DESCRIPTION
Reservoirs	◆	Three reservoirs (80 – 400 mgd) - two for booster pump stations and one for balancing. Two of the reservoirs are core projects – JB3R and MBR
Deep Tunnels		5 mi of 10' dia. tunnel @ Crowley (included in length of Section 9)
Substations & High Voltage Transmission Lines		Six substations and 4 mi. of high voltage transmission lines (◆ two substations)
Microwave Communications and SCADA System	◆	Provides remote operations capability and system monitoring

